

Philadelphia Fruit Market

Philadelphia, Pa.

Wednesday, July 6, 1994

CITRUS FRUITS ---GRAPEFRUIT: MARKET STEADY ctns CA Red 27s 11.00 32s 12.00 36s 11.00 4/5 buctns FL Indian River Red 23s 8.50 27s 8.50 32s 8.50 fair cond 5.00-6.00 48s 8.50 ---
LEMONS: MARKET ABOUT STEADY ctns CA 95s 20.00 fair qual 15.50 few 18.00 115s 25.00 fair qual 22.00 few 24.00 ord qual & cond 3.00-5.00 140s 25.00-27.00 fair qual 23.00 ord qual 16.50 fair cond 8.00-10.00 165s 30.00-32.00 fair qual 25.00-26.00 ord qual 18.00 ord qual & cond 4.00-6.00 200s 31.00 fair qual 26.00 ord qual & cond 4.00-6.00 ---
LIMES: MARKET ABOUT STEADY 10 lb ctns MX Seedless Type 48s 3.00-3.50 few high as 4.00 54s 3.00-3.50 few high as 4.00 63s 3.00-3.50 few high as 4.00 ---
MISC CITRUS: OFFERINGS INSUFFICIENT TO QUOTE ---
ORANGES: MARKET ABOUT STEADY ctns CA Valencia 56s 18.00 fair qual 10.00-11.50 72s 16.00 few 17.00 fair qual 10.00-11.50 88s 14.00-15.50 fair qual 10.00-11.50 113s 12.00-13.00 fair qual 9.00-10.50 138s 12.00 fair qual 8.00-9.50 few 10.00 7 4-lb flmg 113 sz 11.00 4/5 buctns FL Valencia 64s 11.00 80s 11.00 100s 11.00 125s 11.00 ---
TANGELOS: OFFERINGS NONE ---
TANGERINES: OFFERINGS NONE ---
TEMPLES: OFFERINGS NONE ---
BERRIES ---BLUEBERRIES: MARKET SLIGHTLY LOWER flts 12 1-pt flmwrpd bkts NJ med 10.00 med-lge 11.00-12.00 few low as 10.00 flts 12 1-pt cups with lids NJ med 10.00-11.00 med-lge 11.00-12.00 mostly 12.00 ---
CRANBERRIES: OFFERINGS NONE ---
MISC BERRIES: MARKET ABOUT STEADY flts 12 6-oz cups with lids CA Blackberries fair cond 8.00 OR AIR Blackberries 18.00 flts 12 8-oz flmwrpd cups CA Blackberries 15.00 ---
RASPBERRIES: flts 12 6-oz cups with lids OR AIR Red 21.00 flts 12 5.6-oz cups with lids CA Red 12.00-18.00 ---
STRAWBERRIES: MARKET ABOUT STEADY flts 12 1-pt bkts CA lge preferred labels 11.00-12.00 med-lge 7.00-9.00 mostly 8.00 one label 10.00 fair qual 6.00 ---
MELONS ---CANTALOUPS: MARKET SLIGHTLY HIGHER 1/2 ctns/crts AZ 9s 10.00 12s 9.00-11.00 mostly 10.00-11.00 15s 9.00-11.00 few 8.00 fair

cond 5.00 CA 9s few 12.00 12s few 12.00 15s 10.00-12.00 ord cond 4.00-6.00 18s 12.00 ord cond 4.00-6.00 ---
HONEYDEWS: MARKET ABOUT STEADY 2/3 ctns AZ 5s 7.50-8.00 6s 7.50-9.00 8s 7.50-9.00 CA 5s 7.00-9.00 mostly 7.00-8.00 6s 7.00-8.00 fair cond 5.00-6.00 8s 7.00-8.00 fair cond 5.00-6.00 MX 5s 7.00 6s 7.00 ---
MISC MELONS: TOO FEW SALES TO QUOTE ---
WATERMELONS: MARKET STEADY bulk per melon GA Royal Sweet 24-28 lb fair cond 2.00 NC Crimson Sweet 20-24 lb 3.00 SC Sangria 16-22 lb 2.75 14-16 lb avg 2.25 Jubilee 30-32 lb 4.50-5.00 ---
NON-CITRUS FRUITS ---APPLES: MARKET ABOUT STEADY ctns trypk CL Granny Smith 70s fair cond 10.00-12.00 SF Granny Smith 100s 18.50 CONTROLLED ATMOSPHERE STORAGE ctns trypk NY U.S. ExFcy Red Delicious 80s 12.00 125s 12.00 WA WAExFcy Red Delicious 88s 15.00-16.50 one label 20.00-21.00 100s 15.00 113s 15.00 125s 15.00 Golden Delicious 80s 20.00-22.00 100s 16.00-20.00 Granny Smith 100s 16.00 113s 15.00 U.S. ExFcy Red Delicious 138s 12.00-13.00 Golden Delicious 88s 23.00 WA Fcy Red Delicious 64s 12.00-13.00 113s 12.00-13.00 mostly 12.00 125s 12.00 ---
APRICOTS: MARKET SLIGHTLY LOWER 24 lb ctns CA Patterson #6 17.00-18.00 #7 16.50-17.00 #8 few 18.50 #10 13.00 few 16.50 fair cond 11.00-12.00 #12 10.00-11.00 #14 9.00-10.00 tilton 7 row sz 16.00-17.00 7 1/2 row sz 14.00 ---
AVOCADOS: ctns 2 lyr CA Hass 48s 42.00-44.00 few 45.00 ---
BANANAS: 40 lb ctns IMPORT 9.75-10.00 fair qual 8.00-8.50 40 lb ctns bagged IMPORT 10.00 ctns institutional pk IMPORT 12.50 ---
CHERRIES: MARKET ABOUT STEADY 15 lb ctns WA WAOne Rainier xlge sz 45.00 20 lb ctns WA WAOne Bing 10 1/2 row sz & lgr 30.00-35.00 11 1/2 row sz & lgr 27.00-30.00 one lot 22.00 fair cond 12.00-14.00 ---
FRUITS OTHER: flts 1 lyr CA AIR Figs Black Mission 54s 10.00-11.00 flts 12 1-pt bkts CA AIR Figs Black Mission 13.00-14.00 ---
GRAPES: MARKET ABOUT STEADY 23 lb lugs CA Perlette 20.00-21.00 one label 24.00 Flame Seedless 19.00-21.00 mostly 20.00 preferred labels 24.00 some 25.00 Red Seedless 19.00-20.00 Cardinal one label 20.00 22 lb ctns AZ Perlette fair cond 13.00-14.00 Thompson Seedless 18.00-19.00 CA Thompson Seedless 21.00-23.00 one label 25.00 White Seedless Type 22.00 occ higher & lower MX

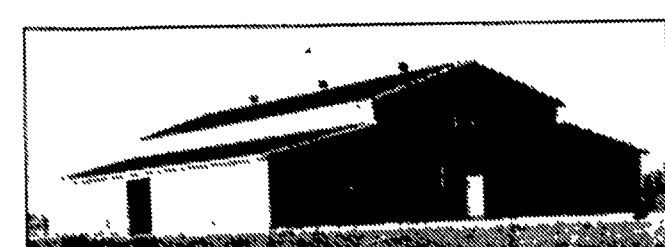
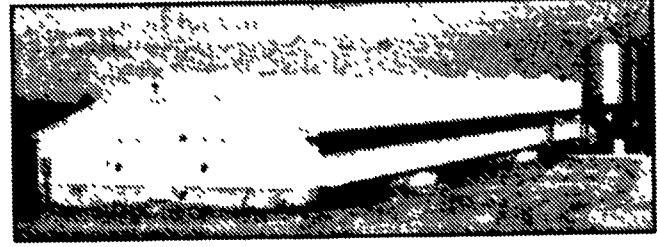
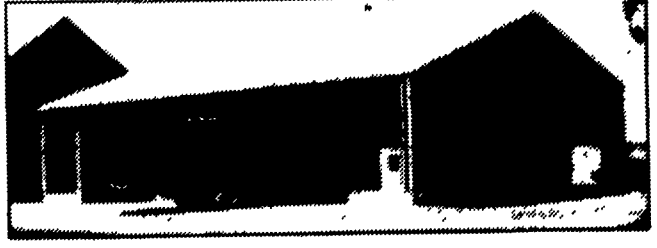
Thompson Seedless 16.00-17.00 Flame Seedless 15.00-17.00 White Seedless Type 18.00-19.00 20-21 lb lugs bgd AZ Black Beauty Seedless 19.00-20.00 CA Flame Seedless 16.00-19.00 White Seedless Type 21.00 MX Flame Seedless 14.00-15.00 ---
KIWI FRUIT: MARKET STEADY flts 1 lyr CL BOAT Hayward 36s fair appear 6.00 39s 7.00 fair appear 6.00 42s fair appear 6.00 ctns 3 lyr CL BOAT Hayward 99s 11.00 ---
MANGOES: MARKET STEADY flts 1 lyr MX Tommy Atkins 9s few 6.00 10s few 6.00 12s 5.00-5.50 few 6.00 14s 5.00 16s 4.50-5.00 ---
NECTARINES: MARKET ABOUT STEADY 25 lb ctns lse CA California Well Matured Firebrite 64 sz 13.50-15.00 May Grand 72 sz fair cond few 10.00 Red Diamond 64 sz 13.50-15.00 Spring Red 56 sz 15.00 64 sz 13.50-14.00 72 sz 10.00-11.00 84 sz 9.00-10.00 Summer Beat 64 sz 12.00-14.00 72 sz 12.00 84 sz 9.00-10.00 mostly 9.00 ---
PAPAYA: 10 lb ctns HI AIR 12s 11.00-12.00 ---
PEACHES: MARKET CA STEADY, OTHERS HIGHER ctns 2 lyr trypk CA California Well Matured Redtop 50s few 15.00 Rich Lady 42s 13.00-14.00 48s 11.00-12.00 25 lb ctns CA California Well Matured June Lady 48-50 sz 13.00 Rich Lady 56 sz 11.00-13.00 64 sz 10.00-11.00 3/4 buctns GA No Grade Marks Redglobe 2 1/2"up 16.00 SC U.S. ExOne Redglobe 2 3/4"up 16.00 few higher No Grade Marks Redglobe 2 1/4"up 14.00 ---
PEARS: MARKET STEADY 40 lb boxes CL BOAT Packham Triumph 60s fair cond 10.00-12.00 Bosc 100s 16.00 CONTROLLED ATMOSPHERE STORAGE 4/5 buctns wrpd WA U.S. One D'Anjou 90s 20.00 135s 13.50 WAExFcy D'Anjou 100s 18.00-20.00 2/5 buctns OR U.S. One Red D'Anjou 60s 10.00 ---
PERSIMMONS: OFFERINGS NONE ---
PINEAPPLES: ctns 1 lyr HI AIR 6s 12.00 ---
PLANTAINS: NO SALES REPORTED ---
PLUMS: MARKET STEADY 28 lb ctns lse CA Black Amber 2x2 sz 18.00 2x2x3 sz 16.00 2x3 sz 16.00-17.00 mostly 16.00-16.50 2x3x3 sz 16.50 3x3 sz 14.00-15.00 2x3x4 sz 12.50-13.50 3x4 sz 11.00-13.00 mostly 11.50-12.50 3x4x4 sz 10.00-12.50 4x4 sz 9.00-11.50 mostly 10.00-11.00 3x4x5 sz few 10.50 4x5 sz few 9.50 El Dorado 2x3x4 sz 14.00 3x4 sz 13.00 3x4x4 sz 12.00-13.00 4x4 sz 11.00-12.00 3x4x5 sz 10.00 occ 9.50 Lorida 3x3 sz 20.00 2x3x4 sz 18.00 3x4 sz 17.00 3x4x4 sz 15.00-16.00 Santa Rosa 3x4x4 sz 13.00-14.00 mostly 14.00 few higher 4x4 sz 12.00-14.50 occ higher few

11.00 3x4x5 sz 10.00-13.00 few 9.00 4x5 sz few 10.50 Wickson 3x4 sz 14.00-15.00 ctns 2-lyr CA Black Amber 40s 10.00-11.00 1 lyr ctn black amber 35s ord cond 1.50 ---
POMEGRANATES: OFFERINGS NONE ---
OFFERINGS NONE.

13.00-14.00 ---
CELERY: MARKET LOWER ctns CA 1 1/2 dz 10.00-12.00 2 dz 11.00-12.00 mostly 12.00 few 14.00 2 1/2 dz 11.00-12.00 mostly 12.00 few 14.00 ctns flmbs MI Hearts 18s 14.00 ---
CHINESE CABBAGE: MARKET STEADY celcrts NJ 8.00 Nappa 8.00-9.00 ---
CORN-SWEET: MARKET ABOUT STEADY wbcrt NC White 4 dz min 14.00-15.00 mostly 15.00 NJ White 4 dz min few 13.00 ---
CUCUMBERS: MARKET SLIGHTLY LOWER WAXED UNLESS OTHERWISE STATED 1 1/9 buctns GA med fr qual 8.00 NJ med 14.00-15.00 fr cond 9.00-10.00 VA med few 15.00 fr qual 8.00-10.00 mostly 8.00 few loss 6.00 sml 10.00 lge 5.00-6.00 buctns NJ Pickles unwaxed sml-med fr qual few 9.00 lge few 6.00 ---
EGGPLANT: MARKET SLIGHTLY HIGHER 1 1/9 buctns FL fr cond 6.00 NC fr cond 6.00-8.00 VA 10.00 fr qual 8.00 ---
ENDIVE: MARKET ABOUT STEADY 1 1/9 buctns/crts OH 8.00 ctns CA 24s 12.00 ---
ESCAROLE: MARKET ABOUT STEADY 1 1/9 buctns/crts OH 8.00-9.00 ---
GARLIC: MARKET ABOUT STEADY NEW CROP 30 lb ctns MX White col 34.50 super jbo 30.00-32.00 exjbo 28.50 ---
GREENS: MARKET ABOUT STEADY crts bchd NJ Collard 5.50-6.00 mostly 6.00 Kale 6.00-7.00 Mustard 6.00 Turnip Tops 7.00 Dandelion 8.00 Swiss Chard 6.00-8.00 Red 7.00 Rape 6.00 OH Swiss Chard 7.00 ctns bchd CA Swiss Chard 12s 11.00 Red 12s 11.00 ctns lse CA Kale Flowering red 13.00-14.00 20 lb ctns CA Broccoli Rabe 27.00 ---
LETTUCE-ICEBERG: MARKET SLIGHTLY LOWER ctns CA 24s 10.00-12.00 few 13.00 fr cond 8.00 Wrapped 24s 10.00-13.00 30s 8.00-10.00 CD 18s fr appear 4.00-5.00 NJ 24s 8.00 ---
LETTUCE-OTHER: MARKET LOWER ctns CA Boston 7.00-9.00 few 9.50-10.00 Green Leaf 24s 10.00-11.00 few 11.50-13.00 Red Leaf 24s 10.00-12.00 mostly 11.00-12.00 few 13.00 CD Green Leaf 24s 6.00-7.00 crts OH Bibb 5.00 ---
LETTUCE-ROMAINE: MARKET LOWER ctns CA 24s 14.00-17.00 mostly 16.00-17.00 few 18.00 CD 24s 6.00-7.00 occ 8.00 NJ 24s few 10.00-12.00 OH 24s 7.00-9.00 mostly 8.00 1.3 buctns CA 24s 17.00-19.00 some 20.00 ---
MUSHROOMS: MARKET STEADY 10 lb ctns PA lge 12.50 med 10.50 4 qt bkts

(Turn to Page A14)

Engineered For Life On The Farm.




Choose from a wide range of standard or custom Lester wood frame agricultural buildings. Each features value engineered Uni-Frame® construction. Top quality materials. The industry's leading warranty.


And the support of the nation's leading building company. Reap the benefits of quality, affordable storage. Call your local Lester dealer or 1-800-826-4439 today.

Contact The Lester Dealer Nearest You Today For A Quote Or More Information


- PENNSYLVANIA**
- Annville
H.R. WEAVER BUILDING SYSTEMS (717) 838-3753
- Coalport
FOUR COUNTIES CONTRACTORS, INC. (814) 672-5751
- Lebanon
LEBANON BUILDING SYSTEMS, INC. (717) 272-4449
- Montoursville
COUNTRY CONSTRUCTION (717) 368-1718
- Nazareth
NAZARETH BUILDING SUPPLIES (215) 837-7700
- New Oxford
UMBAUGH BUILDINGS, INC. 1-800-222-9047
- Winterford
ROBERT R. SMITH & SONS (814) 825-5828
- West Chester
DELAWARE VALLEY STRUCTURES, INC. (610) 344-7242
- MARYLAND**
- Reisterstown, MD
REYNOLDS & YELLOTT CO., INC. (410) 833-1840
- Street, MD
GOMPFF CONST. CO. (410) 692-5350
- Taneytown, MD
RASCHÉ BROTHERS, INC. (410) 756-4457
- NEW JERSEY**
- Mt. Holly, NJ
MATTSON ENTERPRISES, INC. (609) 261-3600



LESTER BUILDING SYSTEMS
A Division of Butler Manufacturing Company




Lebanon Fairgrounds



PENNSTATE
College of Agricultural Sciences
Cooperative Extension

Stop By And See Our Display July 12-13, 1994



LESTER BUILDING SYSTEMS
A Division of Butler Manufacturing Company