

USED TRUCKS



'93 Chev. Dual Wheel 3500 Utility Body, 350 EFI, Auto., PS, PB, 27,000 Miles

\$17,400



94 Chev. Ext. Cab, Dually, Silverado 6.5 Turbo Diesel, 5 Spd., PS, PB, AC, Cruise, Tilt, PW, PDL, Bucket Seats, Console, AM & FM Stereo Cass., 600 Miles

\$29,600

Financing Available

MARTIN'S AUTO SALES

1025 W. Main St., New Holland, PA 17557
(717) 656-6621

FOR SALE



1985 FORD F250
Heavy Duty, 8700 GVW Towing Package, Fifth Wheel Hitch.
Call **610-926-2441**



1986 ALMAC 3200 Gallon Single Compartment Tank, Steel, Meter.
\$1,500.00
CALL 1-800-345-2829
Curry Supply Co.

Multi-Use Silage & Grain Body

Available In 12' to 20'



Standard: Harsh Holst, 11 ga. Floor & Sides, Hyd. End Gate Opens From Cab, 3" Tapered Sides For Easy Unload. Center Mounted Grain Door, 60" Sides

Order Now To Beat Spring Rush!

Manufactured In Franklin County By

Al's Truck Repair

5141 Roxbury Rd., Shippensburg, PA 17257

717-530-8998

Dealer Inquiries Invited

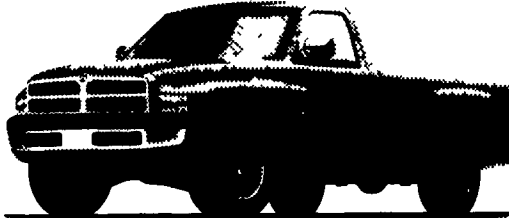


QUARRYVILLE

CHRYSLER

PLYMOUTH

DODGE



The New Ram 1500
360 High Output
(Excellent Tow Vehicle and Great for Farm or Highway)

THE RULES HAVE CHANGED.



The New Ram 2500
We Have: V-10's and Cummins Diesels in Stock

4x4's IN STOCK

\$500.00 Rebate to PA FARM BUREAU MEMBERS

Quarryville

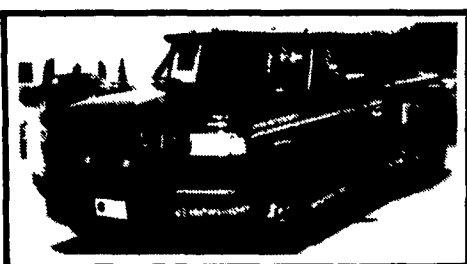
Dodge & Dodge Trucks
Chrysler • Plymouth

"In The  of Southern Lancaster County"
Rt. 222, 1 mile North of Quarryville, PA **717-786-8220**

Mark VII's • Pickups • Broncos • Stake Body • Crew Cabs • Crew Cabs

LYNXS • TOPAZ • Diesel Pickups • Mustangs • Thunderbirds

MARQUIS • Grand Marquis • XLTS • Custom Vans



Large Selection New & Used F-350 - Duallys

Diesel & Gas



'93 FORD RANGER SPLASH
6 Cyl., 5-Spd, A/C, #P1928
\$14,699



'93 FORD AEROSTAR XLT
Extended, Dual A/C, Cassette, Loaded, #P1937
\$17,999



'94 FORD BRONCO, EDDIE BAUER
351-V8, AT, A/C, Leather, Loaded, Only 8,000 Miles, #P1954
\$26,999



'93 FORD EXPLORER SPORT
6 Cyl., 5-Spd., A/C, #P1938
\$19,699



'93 FORD F150
Lighting, 8 Cyl., AT, AC, Loaded 12,000 MI #4278B
\$16,999



'93 FORD EXPLORER
2 Dr., Sport, 6 Cyl., 5-Spd., A/C #P1932
\$21,999



'93 FORD RANGER XLT
4 Cyl., 5-Spd., 9,000 Mi., #P1927
\$12,399



'92 FORD RANGER XLT
Super Cab, 6 Cyl., AT, A/C, Loaded, #P1925
14,995



'92 FORD AEROSTAR XL
6 Cyl., AT, A/C, #P1958
14,999



'93 FORD EXPLORER XLT
2 Dr. Sport, 6 Cyl., 5-Spd., Loaded #1932
\$21,999



'92 CHEV. SID TAHOE
6 Cyl., AT, Low Miles, #P4641A
\$10,999



'92 FORD F250 XLT 4x4
Heavy Duty, 5 8 V8, AT, #4795A
\$18,999



'90 FORD F150 XLT
4x4, V8, 5-Spd., Loaded, #4783A
\$14,999



'91 FORD F250 4X4
5.0, V8, AT, A/C, #P1934
\$15,999

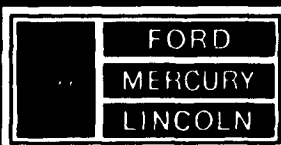


'90 CHEV. G20 CONVERSION VAN
V8, AT, TV, VCP, 22,000 Mi., #8011A
\$16,999



'84 FORD F150
6 Cyl., 3-Spd., Only 68,000 Mi., #4822A
\$3,995

Unless the Sheehy Emblem is on Your Car or Truck...You Probably Paid too Much!



LEBANON

-20th & CUMBERLAND STS. - RT. 422 WEST
9-9 DAILY; 9-5 SATURDAY • SHEEHY HOTLINE : (717) 272-7671 OR 533-5293

PARTS DEPT. OPEN
DAILY 8-5
SAT. 8-12
717-273-8168

Tempos • Cougars • Continentals • Town Cars • 4x4s • Box Vans • Rangers