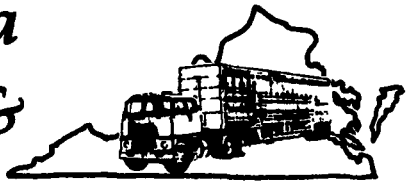


Virginia Cattle & Hogs



Virginia Weekly
Richmond, Va.

Wednesday, June 29, 1994

REVIEW OF VIRGINIA DIRECT HOGS FOR THE PERIOD JUNE 22-28, 1994. RECEIPTS FOR HOT CARCASS BASIS TOTALED 1588 HEAD.

RECEIPTS FOR LIVE BASIS PLANT DELIVERY (WITHIN A 30 MILE RADIUS) TOTALED 280 HEAD. RECEIPTS FOR LIVE BASIS COUNTRY BUYING STATIONS TOTALED 1264 HEAD. THE VIRGINIA DIRECT HOG MARKET - TRENDS COMPARED TO LAST TUESDAY.

BARROWS AND GILTS: HOT CARCASS BASIS 163-191 LB. CARCASS TREND: 65 CENT LOWER. PRICE: \$58.30 48% LEAN YIELD <27mm(1.15 IN. TENTH RIB) BACKFAT.

LIVE BASIS LOCAL PLANT DELIVERED (WITHIN 30 MILE RADIUS) US 2-3 220-250 LBS. TREND: \$1.00 LOWER. PRICE: FEW 38.00-40.00.

LIVE BASIS VIRGINIA COUNTRY POINTS U.S. 1-3 220-250 LBS 40.50-41.50.

SLAUGHTER STEERS AND HEIFERS 0%; SLAUGHTER COWS 28% SLAUGHTER BULLS 4%, SLAUGHTER CALVES AND VEALERS 0%; FEEDER CATTLE UNDER 600 LBS 56%, OVER 600 LBS 12%.

PRICE RANGES FOR VIRGINIA WEEKLY AUCTIONS: SLAUGHTER STEERS & HEIFERS: TOTAL HEAD COUNT -- HEAD STEERS: CHOICE 2-3 1150-1300 LBS ---- SELECT 2-3 1000-1200 LBS.

HEIFERS: CHOICE 2-3 950-1100 LBS ---- SELECT 2-3 850-1100 LBS ---- SELECT 2-3 1100-1300 LBS ---- SLAUGHTER COWS TOTAL HEAD COUNT 591 HEAD UTILITY & COMMERCIAL COWS 36.50-46.75.

SLAUGHTER BULLS: HEAD COUNT 76 HEAD BULLS - 1-2 900-1300 LBS 50.00-61.00 1-2 1300-1600 LBS 52.00-62.00 1-2 1600 LBS & OVER 55.00-64.00 FEW 48.00.

SLAUGHTER CALVES & VEALERS TOTAL HEAD COUNT -- HEAD CALVES - GOOD AND CHOICE 250-500 LBS.

SLAUGHTER LAMBS TOTAL HEAD

COUNT 398 HEAD NEW CROP CHOICE & PRIME 3-4 142 LB. 45.00 CHOICE & FEW PRIME 1-2 FEW 3 95-103 LB 67.00-67.50 CHOICE & FEW PRIME 1-2 FEW 3 105-106 LB. 68.00 GOOD & FEW CHOICE 1-2 59-86 LB. 55.00-67.50 (OLD CROP) WOOLED CHOICE & FEW PRIME 2-3 118 LB. ---- CHOICE & FEW PRIME 1-2 FEW 3 110-114 LB. ---- GOOD & FEW CHOICE 1-2 60-80 LB.

SLAUGHTER HOGS TOTAL HEAD COUNT 72 US 1-3 200-250 LBS 37.00-39.00 US 2-4 250-300 LBS 31.00-37.75 SOWS US 1-3 300-500 LBS 23.00-32.00 500 LBS & OVER 27.25-33.75.

FEEDER CATTLE TOTAL HEAD COUNT FOR ALL WEIGHTS 1454 HEAD.

STEERS: MEDIUM 1 200-300 90.00-105.00 300-400 77.00-90.00 400-500 76.00-90.00 500-600 70.00-84.00 600-700 67.50-73.00.

HEIFERS: MEDIUM 1 200-300 88.00-91.00 300-400 67.00-81.00 400-500 62.50-76.50 500-600 62.50-73.00 600-700 64.00-67.00.

SPECIAL SLAUGHTER CATTLE SALE HELD AT STAUNTON UNION, VIRGINIA ON JUNE 21, 1994 177 HEAD SOLD STATE GRADED.

STEERS: CHOICE 2-3 1100-1400 LBS \$56.00-61.00 SELECT 2-3 1000-1200 LBS \$55.00-57.00.

HEIFERS: CHOICE 2-3 1000 STOCK WEIGHTED AVERAGES COMBINED LOCATIONS SUMMP*

MARKET: CULPEPER, VA SPECIAL: RECEIPTS 169 MEDIUM AND LARGE FRAME 1 FEEDER STEERS

HEAD WGT RANGE AVE WGT PRICE RANGE AVG PRICE COMMENTS 11 444-444 444 \$81.00-81.00 81.00 9 548-548 548 \$84.25-84.25 84.25 29 551-551 551 \$83.00-83.00 83.00 50 636-648 643 \$73.50-80.25 76.07 8 765-765 765 \$72.00-72.00 72.00.

MEDIUM FRAME 1 FEEDER STEERS HEAD WGT RANGE AVE WGT PRICE RANGE AVG PRICE COMMENTS 1 460-460 460 \$67.00-67.00 67.00 1 660-660 660 \$73.00-73.00 73.00.

LARGE FRAME 1 FEEDER STEERS HEAD WGT RANGE AVE WGT PRICE RANGE AVG PRICE COMMENTS 1 410-410 410 \$70.00-70.00 70.00 3 452-452 452 \$78.50-78.50 78.50 2 617-617 617 \$80.00-80.00 80.00.

SMALL FRAME 1 FEEDER STEERS HEAD WGT RANGE AVE WGT PRICE RANGE AVG PRICE COMMENTS 3 467-467 467 \$69.75-69.75 69.75 2 558-558 558 \$69.50-69.50 69.50.

MEDIUM AND LARGE FRAME 2 FEEDER STEERS HEAD WGT RANGE AVE WGT PRICE RANGE AVG PRICE COMMENTS 1 460-460 460 \$75.00-75.00 75.00 4 526-526 526 \$73.00-73.00 73.00 2 618-618 618 \$71.50-71.50 71.50.

MEDIUM AND LARGE FRAME 1 FEEDER HEIFERS HEAD WGT RANGE AVE WGT PRICE RANGE AVG PRICE COMMENTS 6 438-438 438 \$72.00-72.00 72.00 8 547-547 547 \$69.00-69.00 69.00 3 653-653 653 \$66.00-66.00 66.00.

MEDIUM FRAME 1 FEEDER HEIF-

ERS HEAD WGT RANGE AVE WGT PRICE RANGE AVG PRICE COMMENTS 1 515-515 515 \$69.00-69.00 69.00 1 550-550 550 \$68.00-68.00 68.00.

LARGE FRAME 1 FEEDER HEIFERS HEAD WGT RANGE AVE WGT PRICE RANGE AVG PRICE COMMENTS 1 490-490 490 \$68.50-68.50 68.50 2 550-590 570 \$66.75-69.00 67.88 1 650-650 650 \$66.50-66.50 66.50 2 700-710 705 \$61.00-63.25 62.13 1 820-820 820 \$58.00-58.00 58.00.

SMALL FRAME 1 FEEDER HEIFERS HEAD WGT RANGE AVE WGT PRICE RANGE AVG PRICE COMMENTS 4 445-445 445 \$60.00-60.00 60.00.

00 MEDIUM AND LARGE FRAME 2 FEEDER HEIFERS HEAD WGT RANGE AVE WGT PRICE RANGE AVG PRICE COMMENTS 2 385-385 385 \$66.00-66.00 66.00 4 461-461 461 \$68.00-68.00 68.00 3 530-530 530 \$64.50-64.50 64.50.

Shenandoah Valley Livestock

Harrisonburg, Va.
June 25, 1994

Report supplied by auction

STEERS: M&L-1 300-500 LBS. 68.00-80.00, 500-700 LBS. 65.00-70.00, 700-1000 LBS. 56.00-62.00; HOLSTEIN 300-1000 LBS. 52.00-76.00.

FEEDER BULLS: 300-500 LBS. 60.00-70.00, 500-600 LBS. 58.00-65.00; 700-800 LBS. 48.00-58.00.

HEIFERS: 300-500 LBS. 70.00-73.50, 500-700 LBS. 60.00-70.00, 700-1000 LBS. 47.00-60.00.

STOCK COWS: BEEF 475.00-625.00; BABY CALVES 45.00-140.00.

SLAUGHTER COWS: UTILITY AND COMMERCIAL 2-4 40.00-44.75; CANNER AND CUTTERS 1-3 38.00-41.00.

SLAUGHTER BULLS 1&2: 50.50-59.25.

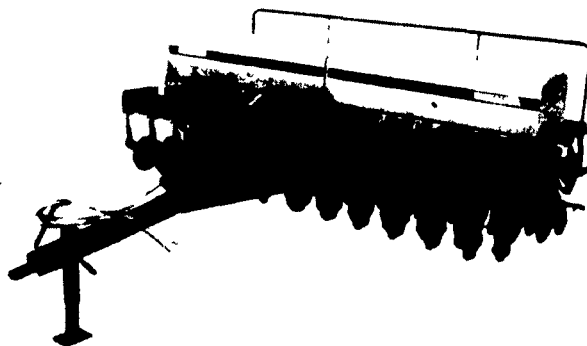
LAMBS: BLUE O HIGH CHOICE AND PRIME 66.50; RED O CHOICE 60.00; FEEDER LAMBS CHOICE 62.75; SLAUGHTER EWES 20.50-29.00.

HOGS: US1-3 200-240 LBS. 32.50.

KRAUSE NO-TIL DRILLS

Seed it!

Here's what owners of the Krause NO-TIL Drill are saying about its performance in their operations:



5215N No-Till Drill

Models available

- 5210 - 10 feet, 16 x 7.5
- 5213 - 13 feet, 21 x 7.5
- 5215 - 15 feet, 24 x 7.5

"Last year when I bought it, I was concerned about penetration and seed depth control. But the Krause drill has excellent penetration. I love the job it does. It also saves a lot of time, especially with the late spring we are having."

Bob Oswald
Nazareth, PA

"The Krause NO-TIL Drill met my needs. It will penetrate hard ground, even in stones. The Hooper hitch innovation works."

Charles Beaver
Millerstown, PA

"We like the Krause NO-TIL Drill. It produces excellent stands of small grain and soybeans."

Dick Breckbill
Oxford, PA

AND IT COSTS \$THOUSANDS LESS . . .

HOOPER EQUIPMENT INC.
MIDDLE TOWN, DE

All New & Used
Products
Backed By
Hooper Parts &
Service

HOOPER

TWO LOCATIONS

C. B. HOOPER & SON, INC.
INTERCOURSE, PA

Breathe Clean, Cool Powered Air



Combined respiratory, head, eye and face protection creates a personal mini-environment of clean air for you to work. You can do more work in less time because you take fewer breaks. By increasing productivity you increase profit - not to mention comfort!

Use it for:

- Ragweed and other pollens in field mowing
- Making hay - especially round bales
- Combining
- Handling poultry
- Cleaning chicken houses

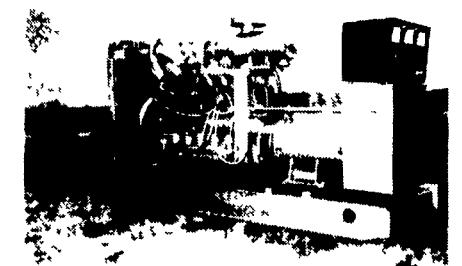
Similar products available to protect you in your orchard spraying and to control odor problems.

Call 1-800-234-7417 for more information

S.E.I. ENVIRONMENTAL SUPPLY

21515 Peachtree Road, PO Box 368, Barnesville, MD 20838
301-972-7417 • FAX 301-916-3517 • Toll Free 1-800-234-7417

VISA/Mastercard Accepted



GENERATORS

- Sales ★ Service ★ Rentals
- ★ Complete Generator Systems
- ★ PTO ★ Portables ★ 2-1600 KW

"We Service It If You Have It
And Sell It If You Need It"

34 W. Mohler Church Rd.
Ephrata, PA 17522

Tel: 717-738-0300
Fax: 717-738-4329