

**Morrison Cove
Livestock Auction**
Martinsburg, Pa.
Monday, June 27, 1994
Report Supplied by Auction
CATTLE: 229. STEERS: CHOICE
60.00-66.00, GOOD 58.50-60.00.
HEIFERS: CHOICE 60.00-65.00,

GOOD 58.00-60.00.
COWS: UTILITY & COMMERCIAL
42.50-48.50; CANNER AND LOW CUT-
TER 35.00-43.50.
BULLOCKS: GOOD & CHOICE
57.00-61.00.
BULLS: YIELD GRADE NO. 1
55.00-65.50.
FEEDER CATTLE: STEERS
65.00-85.00, BULLS 55.00-75.00, HEIF-

ERS 45.00-65.00.
CALVES: 210. PRIME, NO MARKET
TEST, CHOICE 89.00-98.00, GOOD
84.00-90.00, STANDARD 40.00-80.00,
HOLSTEIN BULLS 90-130 LBS.
110.00-150.00, HOLSTEIN HEIFERS
90-130 LBS. 150.00-180.00.
HOGS: 121. US NO. 1-2 42.00-43.00,
US NO. 1-3 41.00-42.00.
SOWS: US NO. 1-3 30.00-38.00.

BOARS 26.50-30.00.
FEEDER PIGS: 25 HEAD. US#1-3
20-50 LBS., 15.00-30.00.
SHEEP: 110. CHOICE LAMBS
60.00-65.00, GOOD LAMBS 55.00-60.00,
SLAUGHTER EWES 18.00-35.00.
GOATS 21.00-60.00.
11 LOADS OF HAY. ALFALFA
59.00-74.00; TIMOTHY 59.00-83.00; 1
LOAD OF EAR CORN AT 83.00.

Select 53.50-57.25. HOLSTEINS: Choice
53.50-57.00, few Select 50.00-54.00.
HEIFERS: few Choice 56.00-58.75, few
Select 51.75-54.50, one Choice Holstein
52.75. COWS: Breaking Utility and Com-
mercial 43.00-45.75, Cutter and Bon. Utili-
ty 43.00-46.25, Canner and Low Cutter
39.00-44.00. Shells down to 32.00.
BULLS: Yield Grade No. 1 1200/1600 lbs.
51.75-59.00. FEEDER CATTLE: Heifers:
Medium Frame No. 2 370/920 lbs.
50.00-66.00; Bulls: few Medium Frame
No. 1 350/700 lbs. 60.00-73.00, few Large
Frame No. 2 500/700 lbs. 47.50-59.00.
CALVES 172. VEALERS: Standard
and Good 75/100 lbs. 50.00-72.50, Utility
60/80 lbs. 40.00-50.00. RETURNED TO
FARM: No. 1 Holstein bulls 90/130 lbs.
125.00-160.00, No. 2 80/125 lbs.
70.00-115.00; No. 1 Holstein heifers
90/140 lbs. 150.00-202.50. Few Beef cross
bulls and heifers 70/110 lbs. 85.00-130.00.
HOGS 257. BARROWS and gilts about
steady. BARROWS AND GILTS: US 1-2
220/250 lbs. 41.85-43.10, four head 43.60,
US 1-3 220/260 lbs. 40.00-42.35, lot US
2-3 192 lbs. 38.50. SOWS: US 1-3 340/620
lbs. 29.50-33.50. BOARS: 26.50-30.00.
FEEDER PIGS 193. US 1-3 20/50 lbs.
70.00-90.00, lot 68 lbs. 69.00. --- per cwt.
Few US 1-3 10/20 lbs. 13.00-14.00. --- per
head.
SHEEP 61. Spring sl. lambs: Choice
50/115 lbs. 66.00-77.50, couple 45 lbs.
90.00, few Good 50/60 lbs. 57.00-63.00.
Slaughter sheep: 30.00-54.00.
GOATS 15. Few Large 45.00-135.00,
few Small Kids 10.00-30.00. --- per head.

Keister's Middleburg Auction

Middleburg, Pa.
Tuesday, June 28, 1994
Report Supplied by PDA

CATTLE 422. PDA ..sl. steers mostly
2.50 to 4.00 lower, cows mostly .75 to 1.00
lower. STEERS: Choice 1050/1475 lbs.
57.00-61.50, Select 53.50-56.50. HOL-
STEINS: Choice 1100/1400 lbs.
53.00-56.75, few to 58.00, Select
51.00-52.75, few Standard 45.00-50.00.
HEIFERS: few Choice 1000/1300 lbs.
55.00-59.50, few Select 50.00-53.00.
COWS: Breaking Utility and Commercial
44.50-46.75, few Beef breed 47.50-49.00,
Cutter and Boning Utility 43.75-47.00,
couple 48.00, Canner and Low Cutter
37.50-43.25. Shells down to 32.00.
BULLS: Yield Grade No. 1 960/1765 lbs.
50.00-58.00, one 1965 lbs. 63.00. FEED-
ER CATTLE: Steers: Large Frame No. 2
770/890 lbs. 52.00-56.00; Heifers: Large
and Medium Frame No. 1 425/850 lbs.
52.00-64.00; Bulls: few Medium Frame
No. 1 380/600 lbs. 68.00-76.00.
CALVES 264. VEALERS: Utility
60/85 lbs. 50.00-65.00. RETURNED TO
FARM: No. 1 Holstein bulls 90/130 lbs.
130.00-170.00, No. 2 85/120 lbs.
75.00-125.00; No. 1 Holstein heifers
85/125 lbs. 155.00-200.00, No. 2 70/ 100
lbs. 105.00-150.00. Beef cross bulls and
heifers 75/115 lbs. 105.00-160.00.
HOGS 707. (06/27 & 06/28/94) ..Bulk of
supply sold on Monday and reported by the
auction. BARROWS AND GILTS: US 1
230/250 lbs. 45.00-46.50, few 47.00, US
1-2 220/250 lbs. 43.00-44.75, US 1-3
210/250 lbs. 40.75-42.75, US 2-3 200/290
lbs. 38.75-40.50. SOWS: US 1-3 300/500
lbs. 26.00-30.00, 350/575 lbs. 30.00-35.50.
BOARS: 200/710 lbs. 25.50-39.50.
FEEDER PIGS 342. Few US 1-3 20/40
lbs. 20.00-40.00, 45/70 lbs. 35.00-42.00,
one lot 80 lbs. 47.00. --- per head. US 1-3
85/115 lbs. 55.00-61.00. --- per cwt.
SHEEP 44. Spring sl. lambs: Choice
55/100 lbs. 56.00-64.00. Slaughter sheep:
25.00-29.00.
GOATS 30. Few Large 45.00-115.00,
Medium 25.00-37.00, Small Kids
15.00-27.00. --- per head.

Leesport Livestock Auction

Leesport, Pa.
Wednesday, June 29, 1994
Report Supplied by PDA

CATTLE 225. PDA .. Supply included
63 sl. steers & heifers, 46 feeder cattle . sl.
steers .50 to 2.50 lower, cows uneven
mostly 1.00 to 2.00 lower. STEERS: few
Choice 1150/1600 lbs. 56.75-61.00, few

Belleville Livestock Auction

Belleville, Pa.
Wednesday, June 29, 1994
Report Supplied By Auction

CATTLE 169. Supplied by the auction
STEERS: Choice 54 50-56.50, Select
51.00-53.85. HOLSTEINS: Choice
51.00-52.75. HEIFERS: Choice
49.75-50.50 COWS: Breaking Utility and
Commercial 44.25-46.10, one 47.10, Cut-
ter and Bon. Utility 43.25-45.25, Canner
and Low Cutter 39.00-43.10. Shells
32.00-38.00, one at 28.00. BULLS: Yield
Grade No. 1 52.75-55.00, No. 2
48.00-52.00.

CALVES 120. FARM CALVES: No. 1
Holstein bulls 135.00-157.50, No. 2
105.00- 132.50; No. 1 Holstein heifers
150.00-167.50.

HOGS 122. BARROWS AND GILTS:
US 1-2 230/260 lbs. 41.10-42.85, US 1-3
200/280 lbs. 38.00-41.25. SOWS: US 1-3
300/500 lbs. 29.75-32.85, 500 lbs. and over
33.00-34.75.

FEEDER PIGS 134. US 1-3 20/30 lbs.
22.00-27.50, 30/40 lbs. 28.00-35.00, 40/50
lbs. 35.00-44.00. --- per head.

SHEEP 90. Spring sl. lambs: Choice
60/80 lbs. 58.00-61.75, 80/100 lbs. 62.00-
68.00. Slaughter sheep: 25.00-37.10.

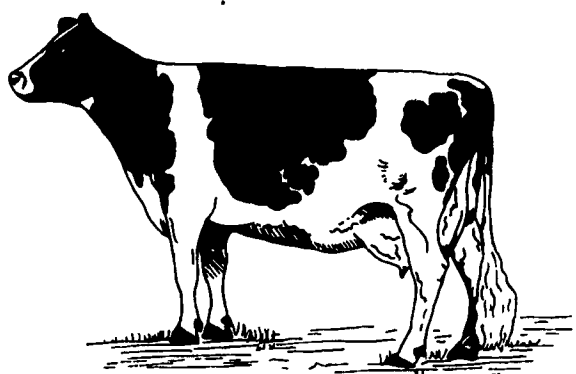
GOATS 14. Large 50.00-61.25, Small
Kids 25.00-32.50. --- per head.

GRAZING?

BST?

HIGH LACTATING HERD?

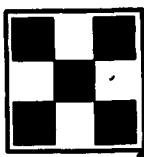
AVERAGE HERD?



HIGH BROS. HAS A PRODUCT TO MEET ALL COW REQUIREMENTS

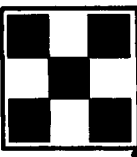
-  **Super EXT®**
-  **Ultimate EXT®**
-  **Flaked Feed**
-  **Many Other Purina Feeds**

**Give us a call today and ask for
Doug, Rick or Phil**



HIGH BROS.

441 Centerville Road
Gordonville, PA 17529
Phone 717-354-0301



Meridian knows poultry.

Call one of our Agribusiness lenders

Berks, Schuylkill,
Lehigh and Upper
Dauphin counties

Bill Hughes
Blaine Fendler
Scott Hunsicker
John J. McMillan

York, Adams
and Cumberland
counties

Wayne Stenour
717/637-8831

Chester and
Montgomery counties

Clay Thompson
John J. McMillan
717/354-0301

Lancaster, Lebanon
and Lower Dauphin
counties

Bob Zuck
717/395-8831
717/341-6446

Or call toll-free 1-800-222-2150

 **Meridian Bank**



CONESTOGA VALLEY ENTERPRISES

HI-MAG **AG LIME** HI-CAL



Cash Discount Savings on Delivery
For your convenience calls received
Mon.-Sat. until 9:00 pm

1-800-724-3277

Serving PA, MD, Delmarva & NJ

WHAT'S AHEAD FOR CORN & SOYBEAN

- We Deal In Futures And Options
- Our Only Business Is Commodity Futures And Options
- Same Location And Principals For Over 20 Years
- When Buying options, your risk is limited to the loss of the premium paid plus all transaction cost. Buying futures and options have inherent risk and should be done only with risk capital.

**FOR INFORMATION...LITERATURE...
CHARTS... PLEASE CALL**

215-821-8111 800-543-8939

LEHIGH VALLEY FUTURES INC.
Suite LL6, 2200 Hamilton St., Allentown, PA 18104

The risk of loss in trading futures and options on futures can be substantial. Futures and options trading may not be suitable for everyone. You should carefully consider the risks in light of your financial condition in deciding whether to trade.