

Kutztown Produce Auction

Fleetwood, PA
June 24-30
Sat. Hay and Straw at 9:00 a.m. followed by produce
Report Supplied by Auction
BEANS: GREEN 5.00-15.00 ¼ BU., YELLOW 5.00-16.00 ¼ BU.
BEETS: .15-.60 BUNCH, 3.50-5.00 CUT.
BLUEBERRIES: 9.50-18.50 FLAT.
BROCCOLI: 3.00-9.00 BU.
CABBAGE: .15-.55 HEAD.
CANTALOPES: .30-.50 EACH.
CAULIFLOWER: .70 HEAD.
CHERRIES: SWEET: 7.50-19.00 FLAT; SOUR 5.50-12.00 8 QT. FLAT.
CUCUMBERS: 1.50-8.50 ¼ BU.
EGGS: .30-.75 DOZ.
PARSLEY: .25 BUNCH.
PEAS: SUGAR 2.00-14.00 ¼ BU., SUGAR SNAP 2.50-12.00 ¼ BU., HULL 3.00-10.00 ¼ BU.
LETTUCE: HEAD 1.00-4.00 BU.
ONIONS: 2.00 4BU.
SPRING ONIONS: 2.50-4.00 ¼ BU.
PEACHES: 4.50 CASE.
PEARS: 8.00-13.50 BU.
POTATOES: RED 4.00-10.00 FLAT, 2.50-5.50 PINT; WHITE 9.00-10.00 FLAT, 2.00 ¼ BU., .70 BAG 5 LBS.
RASPBERRIES: 1.40-2.40 PINT, .65-2.00 ¼ PINT.
SQUASH: YELLOW 1.50-4.50 ¼ BU. RHUBARB: 4.00-7.00 20 LBS.
STRAWBERRIES: 2.00-15.50 FLAT.
TOMATOES: HYDROPONIC .50-2.10 LB., GREENHOUSE .50-1.80 LB., 10.00-37.00 20 LB. BOX.
ZUCCHINI: 1.00-6.50 ¼ BU.
EGGS: 20-.60 DOZ.
BEDDING PLANTS: 1.00-6.00 LOT.
GERANIUMS: .70-1.00 POT.
HANGING BASKETS: 1.75-2.50 EACH.
PERENNIALS: 90-2.25 POT.
LILLIES: 1.10-1.50 POT.
SHRUBS AND TREES: 1.00-7.50 EACH.
CUT FLOWERS: .25 BUNCH.
AUCTION DAYS WILL BE MONDAY, TUESDAY, THURSDAY, AND FRIDAY AT 9:30 A.M.

Southern Maryland Regional Farmers' Market

P.O. Box 144, Cheltenham, Md. 20623
June 23, 1994
BEANS: GREEN 6.50-8.00 BU., 5.00-7.50 ¼ BU.
BROCCOLI: 3.25-4.00 1 1/9 BU.
CABBAGE: WHITE 8.00-9.50 1 1/4 BU., OTHER 2.50.
CUCUMBERS: LARGE 9.00 1 1/9 BU.,

SMALL 10.50 ¼ BU.
SPRING ONIONS: .55 BUNCH.
PEPPERS: SWEET BANANA 4.00 ¼ BU.
RED BEETS: .30 BUNCH.
SQUAS: PATTYPAN 5.50 ¼ BU., YELLOW STRAIGHTNECK 2.50-6.00 ¼ BU., GREEN ZUCCHINI 5.25-7.50 ¼ BU., SUMMER 6.50.
TOMATOES: LARGE 10.00 25 LBS., CHERRY 1.10-1.50 QT., MIXED SIZES 8.50-13.50 25 LBS.
PERENNIAL: 1 GAL. CONTAINER .25-.40.

Dewart Livestock Auction

Dewart, Pa.
Monday, June 27, 1994
Report Supplied by PDA
CATTLE 110.. PDA ..sl. cows 1.25 to 3.50 higher. HOLSTEINS: few Select 52.00-55.00. HEIFERS: one Choice 57.00.
COWS: Breaking Utility and Commercial 44.50-48.00, couple to 50.25, Cutter and Boning Utility 43.00-45.00, couple to 47.75, Canner and Low Cutter 40.00-43.50. Shells down to 32.00.
BULLS: few Yield Grade 1 1020/2300 lbs. 50.00-54.00.
CALVES 197..VEALERS: Standard & Good 75/100 lbs 62.50-75.00, Utility 60/80 lbs. 40.00-50.00. FARM CALVES: No. 1 90/130 lbs. Holstein bulls 130.00-170.00, No. 2 80/125 lbs. 75.00-125.00; No. 1 Holstein heifers 80/135 lbs. 150.00-200.00, No. 2 85/105 lbs. 105.00-157.50. Beef cross bulls and heifers 70/100 lbs. 77.50-155.00.
HOGS 45..Barrows and gilts about steady. BARROWS & GILTS: US 1-2 240/255 lbs. 41.50-42.25. SOWS: US 1-3 250/450 lbs. 31.00-33.00. BOARS: 25.75-30.00.
FEEDER PIGS 14...Few US 1-3 35/40 lbs. 31.00-39.00. --- per head.
SHEEP 9..Spring sl. lambs: few Choice 40/55 lbs. 60.00-72.50. Slaughter sheep: one 35.00.
GOATS 5...One Large 40.00, few Medium 20.00-30.00. --- per head.

St. Louis Cattle, Hogs

Springfield, Il.
Monday, June 27, 1994
CATTLE AND CALVES 450. COMPARED TO LAST MONDAY
SLAUGHTER STEERS 3.00-3.50 LOWER, EXCEPT HOLSTEIN STEERS WEAK TO 1.00 LOWER. SLAUGHTER HEIFERS 2.50-3.00 LOWER, COWS 1.00 HIGHER. FEW BULLS STEADY. SUPPLY MAINLY CHOICE AND MIXED SELECT AND CHOICE STEERS AND HEIFERS, LIGHT SUPPLY HOLSTEIN STEERS, BARELY 10% COWS.

SLAUGHTER STEERS: CHOICE 2-4 1050-1325 LBS. 58.50-60.00, 2-3 1075-1300 LBS. 60.00- 61.00; MIXED SELECT AND CHOICE 2-3 950-1250 LBS. 56.00-58.50; SELECT 2-3 900-1325 LBS. 54.00-56.00.
HOLSTEIN STEERS: FEW CHOICE 2-3 1250-1500 LBS. 54.00-55.00, FEW INDIVIDUAL EXTREMELY GAUNT UP TO 58.00; MIXED SELECT AND CHOICE 2-3 1150-1400 LBS 50.00-54.00.
SLAUGHTER HEIFERS: CHOICE 2-4 900-1250 LBS. 58.00-59.50; 2-3 925-1225 LBS. 59.00-60.00; MIXED SELECT AND CHOICE 2-3 850-1150 LBS. 55.00-58.00; SELECT 2-3 825-1150 LBS. 52.00-55.00.
SLAUGHTER COWS: BREAKING UTILITY AND COMMERCIAL 2-4 40.00-43.00, HIGH YIELDING BREAKING UTILITY 43.00-44.00; CUTTER AND BONING UTILITY 43.00-44.00, HIGH YIELDING CUTTER AND BONING UTILITY 1-2 44.00-46.00; CANNER AND LOW CUTTER 1-2 38.00-41.00, SHELLY CANNER 1-2 34.00-38.00.
BULLS: FEW YIELD GRADE 1-2 1050-1600 LBS. 50.00-56.00.
THIS REPORT IS A SERVICE OF THE ILLINOIS DEPARTMENT OF AGRICULTURE LIVESTOCK AND GRAIN MARKET NEWS SERVICE, SPRINGFIELD, IL. (217) 782-4925.

Eighty-Four Livestock

Eighty-Four, Pa.
Monday, June 27, 1994
Report Supplied by Auction
CATTLE: STEERS SELECT 58.00-61.50; STANDARD 53.00-57.00; UTILITY 52.50 AND DOWN.
HEIFERS: SELECT 58.00-60.00; STANDARD 52.50-57.00; UTILITY 52.00 AND DOWN.
COWS: BREAKING UTILITY AND COMMERCIAL 43.00-46.00, COUPLE TO 48.50; CUTTER AND BONING UTILITY 38.50-43.50; CANNER AND LOW CUTTER 35.50-38.00; SHELLS DOWN TO 34.50.
BULLS: YG#1 55.00-65.00; YG#2 46.00-54.00.
FEEDER STEERS: 200-300 LBS. 64.00-83.00; 300-500 LBS. 50.00-76.00; 500-800 LBS. 43.00-71.00.
HEIFERS: 200-300 LBS. 63.50-91.00; 300-500 LBS. 52.00-75.00; 500-800 LBS. 50.00-69.50.
BULLS: 200-300 LBS. 62.50-93.00; 300-500 LBS. 50.00-68.50; 500-800 LBS. 49.00-68.00.
CALVES: CHOICE 91.00-96.00; GOOD 78.00-88.00; STANDARD AND GOOD 62.50-77.50; UTILITY 63.00 DOWN.
FARM CALVES: HOLSTEIN BULLS #1 120.00-157.50; HOLSTEIN HEIFERS 90.00-182.50; HOLSTEIN BULLS #2 85.00-117.50; BEEF BULLS

85.00-140.00; BEEF HEIFERS 80.00-130.00.
HOGS: US#1-3 200-240 LBS. 42.00-43.50; 240-260 LBS. 42.75-43.50; 365 LBS. 34.50; US#2-3 260-300 LBS. 38.00-43.00.
SOWS: UNDER 500 LBS. 31.50-34.25; OVER 500 LBS. 33.00-34.75.
BOARS: 28.50-29.25.
FEEDER PIGS: US#1-3 40-60 LBS. 26.00-30.00; 60-80 LBS. 29.00-36.00; ROASTING PIGS 80-150 LBS. 35.50-69.00; UTILITY 17.00 DOWN.
SHEEP AND LAMBS: HIGH CHOICE AND PRIME 60-80 LBS. 65.00-77.00; 80-100 LBS. 64.00-80.00; CHOICE 100-125 LBS. 60.00-78.00; FEEDER LAMBS GOOD AND CHOICE 52.00-70.00; UTILITY 51.00 DOWN; EWES 25.00-37.00.
GOATS: LARGE 45.00-84.50; MEDIUM 26.00-47.00; SMALL 15.00-29.00.

Frederick Livestock Auction

Frederick, Md.
June 27, 1994
Report Supplied by Auction
SLAUGHTER COWS: 90 HEAD, 1.50 HIGHER. UTILITY 44.00-48.00; HIGH DRESSING 49.00-51.00; CANNERS 40.00-44.00; SHELLY 40.00 DOWN.
BULLS: YG#1 1200-2000 LBS. 58.00-61.00.
FED STEERS: FEW LOW CHOICE 1150 LBS. TO 62.50.
FED HEIFERS: NONE.
CALVES: 205 HEAD. CHOICE, NONE; CULLS 85-110 LBS. 70.00-83.00; 50-80 LBS. 57.00-70.00.
FARM CALVES: 10.00-15.00 LOWER.
HOLSTEIN BULLS #1 90-120 LBS. 135.00-152.00; #2 80-110 LBS. 85.00-125.00; HOLSTEIN HEIFERS #1 90-120 LBS. 150.00-182.00; 75-85 LBS. 100.00-145.00; BEEF X BULLS 85.00-110.00, 1 AT 130.00.
BUTCHER HOGS; FEW OFFERED; US#1&3 215-260 LBS. 42.85.
SOWS: FEW 500-600 LBS. TO 33.50.
BOARS: NONE.
STOCK CATTLE: STEERS 300-400 LBS. TO 82.00; 1 1000 LB. AT 66.50.
HEIFERS: FEW HOL 400-500 LBS. 85.00-90.00.
BULLS: 300-500 LBS. 66.00-73.00.
GOATS: LARGE 54.00-64.00; MEDIUM TO 45.00; SMALL 20.00-30.00.
PIGS AND SHOATS: BY THE HEAD, 35-50 LBS. 23.00-25.00.
HATFIELD QUALITY MEATS WEIGHT AND GRADE PROGRAM...45.00 PLUS BONUS ON QUALITY HOGS. BUYING STATION IS HELD EVERY TUES. AT FOUR STATES.

CHOICE 58.00-60.00, HOLSTEINS 50.00-56.00.
HEIFERS: SELECT AND CHOICE 52.50-58.50.
COWS: BREAKING UTILITY AND COMMERCIAL 44.00-48.00; CUTTER AND BONING UTILITY 42.00-47.50; CANNER AND LOW CUTTER 38.00-42.50; BIG MIDDLE 40.00-43.50; SHELLY 37.50 DOWN.
BULLS: 1575-1900 LBS. 57.25-58.00.
FEEDER CATTLE: STEERS 300-600 LBS. 63.00-77.00; BULLS 200-350 LBS. 85.00-100.00, 500-850 LBS. 50.00-58.50; HEIFERS, HOLSTEINS 300-500 LBS. 64.00-95.00; DAIRY X 47.00-63.00.
CALVES: RETURNING TO THE FARM. HOLSTEIN BULLS #1 95-125 LBS. 150.00-170.00; #2 90-130 LBS. 120.00-147.50; HOLSTEIN HEIFERS 75-115 LBS. 180.00-210.00; VEAL CALVES STANDARD AND GOOD 50-140 LBS. 70.00-105.00.
SWINE: HOGS US#1-3 220-270 LBS. 41.75-42.50; US#2&4 215-290 LBS. 35.00-41.00; SOWS 300-450 LBS. 30.00-32.00; BOARS 350-450 LBS. 25.00; FEEDER PIGS BY THE HEAD 15-25 LBS. 22.00-26.00; 30-40 LBS. 28.00-33.00.
GOATS: LARGE 70.00-100.00; SMALL/MEDIUM 17.50-57.50.
LAMBS: GOOD AND CHOICE 50-75 LBS. 60.00-73.00; SHEEP 16.00-24.00.
NEXT STATE GRADED FEEDER PIG SALE FRIDAY, JULY 8 AT 1:30 P.M. SALE EVERY TUES. RECEIVING 8:30 A.M. EARLYBIRD PENS CLOSE 2 P.M. LIVESTOCK SALE 7 P.M. PRODUCE, RABBITS, POULTRY ANDEGGS 4 P.M. SALE 5:55 P.M.

North Jersey Livestock

Hackettstown, NJ
Report Supplied by Auction
Tuesday, June 28, 1994
Report supplied by auction
CALVES .11-1.95.
COWS .20-51 1/4 .
EASY COWS 15% -.44% .
HEIFERS .31-.62.
BULLS .46% -.62.
STEERS .33-.63.
HOGS .25-.42.
ROASTING PIGS EACH 2.00-46.00.
BOARS .26% .
SOWS .21-.28.
SHEEP .15-.54.
LAMBS EACH 17.00-71.00.
LAMBS PER LB. 44-.90.
GOATS EACH 5.00-155.00.
KIDS EACH 3.00-76.00.
TOTAL 1166.

Carlisle Livestock Market

Carlisle, Pa.
Tuesday, June 27, 1994
Report Supplied by Auction
SLAUGHTER: STEERS SELECT TO

MAHONING OUTDOOR FURNACES

"The Natural Way To Heat Your Home"

Burns Coal, Wood, Oil or Natural Gas
FUEL USED IN STANDARD UNIT: WOOD & COAL & WOOD BY-PRODUCTS (SAWDUST, PAPER, ETC.) FUEL USED IN MULTI-FUEL MODEL: SAME AS ABOVE INCLUDING OIL, PROPANE, NATURAL GAS
Efficiency Rating 83% to 85% - Cut Emissions by 90%
3-Year Warranty Except Electrical Components (1 Year)
35 Years Heating Experience

PROUDLY BUILT IN INDIANA COUNTY, PENNSYLVANIA
100,000 - 500,000 BTU 36"-60" Fire Boxes

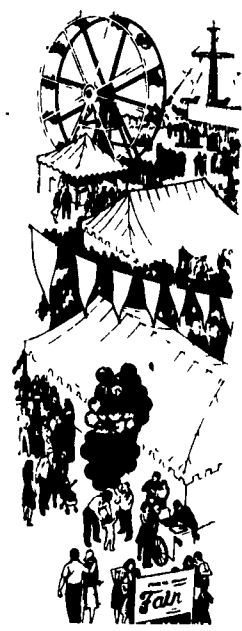
★ The only outdoor furnace made with a Catalytic Combuster. ★
Mahoning Catalytic Combuster Will Help In The Following Ways:

1. Burn one cord of wood which equals 166 gallons of oil.
2. Your fuel source becomes enormous inexhaustible and poses few risks to public safety.
3. Overall efficiency of 85% which means the heat no longer goes up the chimney!
4. You get more heat from a log compared to the non-cat furnace.
5. More burn time - less reloading time!
6. Zap 90% of pollutants, made from fire source.
7. Saves you a lot of money!
8. User friendly, emits no smoke!

SCHOENLY'S NURSERY

5510 Boyertown Pike, Birdsboro, PA 19508
(610) 689-5230

Cut Your Heating Cost With Our Outdoor Furnace



QUALITY FEEDER PIG AUCTION

S & J VILLARI LIVESTOCK
Gumboro, Delaware

Monitored Herd feeder pigs from the DELMARVA PENNSINSULA

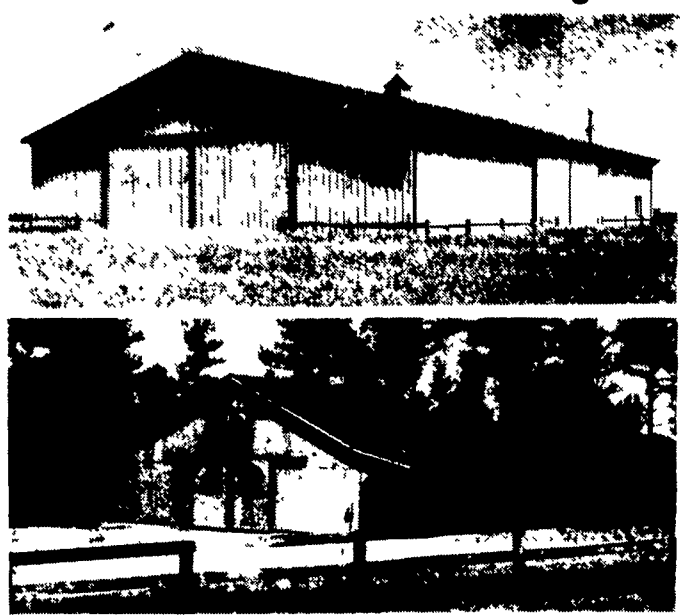
Auction Dates: 2nd & 4th Fridays of the month. Time of Sale: 1:00 p.m.

Tele-auction available Delivery can be arranged For more information, please call: 1-800-238-0801

MORTON BUILDINGS

Since 1903

- Horse Barns
- Riding Arenas
- Garages
- Warehouses
- Offices
- Shops
- Equipment Storage
- Aircraft Hangars



MORTON BUILDINGS, INC.

Excellence — Since 1903

CONTACT:

3368 York Rd.
Gettysburg,
PA 17325
717/624-3331

P.O. Box 126,
Phillipsburg,
NJ 08865
908/454-7900

Call or write today for more information

1-800-447-7436

Illinois only, call 1-800-428-8686