

# BIGGEST VALUES

Biggest Values  
Big Buys  
ON QUALITY  
Used Equipment



## 1 FARM EQUIPMENT

### TANKS

20,000 Gal. Steel, Excellent w/saddles... \$3,000  
1500 Gal. Steel (Pressure)... \$700  
1000 Gal. Steel & Fiberglass (New) Double Wall 7 Ga..... \$600  
300 & 550 Gal. Steel (New) 7 Ga..... \$400/ea.  
500 Gal. Steel (Pressure) w/ Tar.. \$500  
**410-337-3570**

Int 3688 w/Cab; 3388 w/Cab; 1586 4WD; 1486 w/Cab; 1086 w/Cab; 1066 Black Stripe; 986 w/Cab; 966; 885, 4WD w/loader; 786; 766; (2) 656; 656 Hydro w/loader; 585 w/Cab, 4WD & Loader; 460 w/picker; 300; New 7275 Cub Cadet 4WD w/mower, IH140  
JD 3020; 430, JD 410 Backhoe Loader; Ford 8N; AC200 NH 325 Skid Steer  
Combines JD 4400; JD 40, (2) MF 510; IH 205  
Balers: Round NH 855; NH 852; (2) NH 851; NH 850; (2) JD 330, Gehl 1310  
Balers: Square NH 278 w/thrower; MF 124 thrower;  
Rakes IH 14  
Haybines JD 1217 haybine

Farmco feeders; Hurst trailers; Bison Stock trailers; and all other types of farm equipment

From  
**Leader's Farm Equipment**  
Everett, PA  
**814-652-2809**

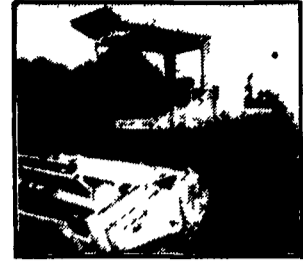
All Types Of Farm Equipment



**Zetor Model 6211 Tractor, 55 HP \$5,500**



**IH 5088 Tractor 135 HP, 1984**



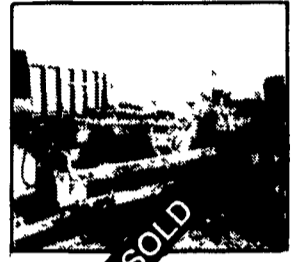
**New Holland 1496 Self Propelled 12' Mower Conditioner \$18,900**



**NH 1499 Mower Conditioner, 800 Hours \$29,900**



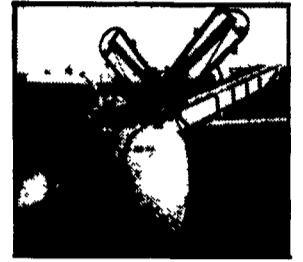
**Hardi Air Blast Boom Sprayer 155 Gal. 26' Boom, Excellent Condition \$3,500**



**JD 870 Minimum Till Cultivator with Rolling Shields and Stabilizer Coulters \$2,450**



**Deutz Fahr PTO Gyro Rake 1-\$1,850**



**Hardi 155 Gal. Sprayer w/Diaphragm Pump \$1,700**



**Ford 4610 52 HP 1200 Hrs. \$14,900**



**Gleaner F2 Combine Diesel, 13' Grain Platform, 4 Row Narrow Cornhead \$14,500**



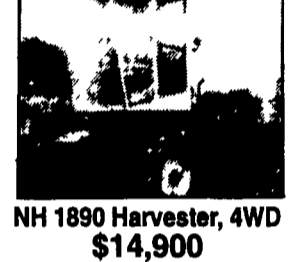
**NH 575 Square Baler**



**NH 853 Round Baler Used 2 Seasons \$9,900**



**JD 347 Baler w/30 Bale Ejector \$5,900**



**NH 1890 Harvester, 4WD \$14,900**



**New Holland Windrow Inverter \$2,500**

**ABC GROFF** 110 South Railroad Ave. M-F 7:30 to 5:00  
New Holland, PA 17557 Sat. 7:00 to Noon  
(717) 354-4191



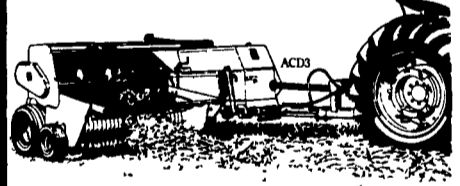
# Roundup of Savings



We're passing special savings from John Deere on to you



### JOHN DEERE BALERS DELIVER CONSISTENCY, CONSISTENTLY



Building "square-er," stackable, solid bales is what our proven hay control system is all about. Once hay is inside the baler, a continuous-flow, floating auger moves the crop into a tapered chamber - precompressing the hay before it reaches the bale chamber. This makes John Deere bales denser, and more consistent. A difference you'll notice when stacking and feeding bale after John Deere bale.

**Model 338 Mid Size Baler With 1/4 Turn Chute Sale Price \$10,850<sup>00</sup> (1 Only)**

### JOHN DEERE...THE FASTEST MOVING BALERS AROUND

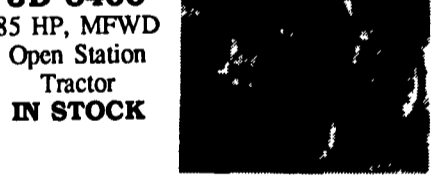


Why do more people choose John Deere balers? Because John Deere balers are easy to use and they deliver the best bales. Bales that hold their shape, and quality.

And they deliver quality bales in tough crops and conditions, too. Just customize your John Deere baler with one or more of these productivity options.

**Model 435 Round Baler IN STOCK Sale Price \$16,500<sup>00</sup>**

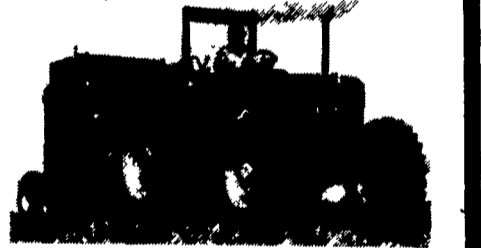
### JD 6400 85 HP, MFWD Open Station Tractor IN STOCK



**JD 5300 50 HP, MFWD TSS Synchronized Transmission IN STOCK**

Call For Prices Or Demo

### READY FOR YOUR INSPECTION



**Test Drive A New John Deere 85 HP, 6400 Tractor Today!**

- Experience smooth-shifting performance.
- Ride in complete comfort.
- See the visible difference.
- Join us and discover new power, performance, and productivity

**IN STOCK NOW!**

### AGGRESSIVE ROTARY ACTION LETS YOU EMPTY WAGONS FAST



Keep your forage and your operation moving with a 100 (540 rpm) Forage Blower. Aggressive Feeding lets you unload wagons fast, for a quick turnaround time. The 100 series blower features a rotary feed table that shoots forage into the blowing chamber. And since the material is already moving when it reaches the fan, you'll need less horsepower to blow silage into the silo.

**Model 100 Blower IN STOCK Sale Price \$3,950<sup>00</sup>**

### 450 SERIES END-WHEEL DRILLS ENHANCED PERFORMANCE AND DURABILITY MAKE THESE DRILLS THE BENCHMARK IN END-WHEEL DRILL DESIGN



The 450 Drill accurately and easily seeds in a variety of conditions, thanks to up to 124 pounds of opener down-pressure and a hefty 1 1/4 -inch-square pressure shaft.

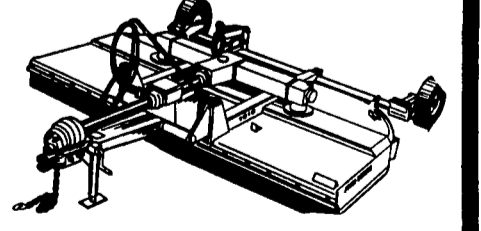
**Model 450 8 Ft. With Grass Seed Attachment \$4,750<sup>00</sup> Model 450 10 Ft. \$5,195<sup>00</sup>**

### NOBODY DOES HAY BETTER

- Speed up drydown with a John Deere 9-foot 1219 Mower/Conditioner.
- Exclusive urethane conditioning rolls apply more pressure per square inch over more crimping points.
- Easy adjustments for pressure, roll spacing, platform float, shoe height.

**IN STOCK NOW 1219 9 Ft. With Options \$9,490<sup>00</sup> (1 Only)**

### 10 FT. CUT WIDE-CUT QUALITY RUNS IN THE FAMILY



- Choose the 10-foot 1018.
- Continuous-seam welding and heavy-gauge decks mean durability, performance.
- High blade 'tip speeds for cleaner, more uniform cut.

**Sale Price \$5390<sup>00</sup>**

**ABC GROFF** 110 South Railroad Ave. Monday Thru Friday 7:30-5:00  
New Holland, PA 17557 Saturday 7-NOON  
(717) 354-4191