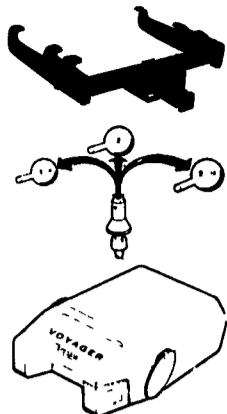


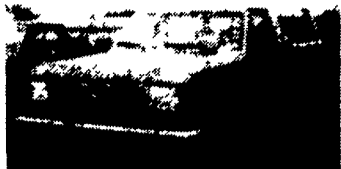
**TRAILER HITCHES**  
Quality & Price



- ★ Free Catalog
- ★ MC/Visa/Disc
- ★ UPS Shipping

**Weaver Distributing**  
1-800-Weaver-D  
1-200-932-8373  
Fax 717-965-2667

**GOOD USED TRUCKS**



'91 FORD F250 4x4  
V8, AT, A/C, #P1934  
\$15,999



'94 FORD BRONCO, EDDIE BAUER  
351-V8, AT, A/C, Leather, Loaded  
Only 8,000 Miles, #P1954  
\$26,999

**SHEEHY LEBANON**

FORD • MERCURY • LINCOLN

9-9 Daily 9-5 Saturday Sheehy Hotline (717) 272-2671 or (517) 529-1201  
20TH & CUMBERLAND STS. • RT. 422 WEST

**LOUVERED TAILGATE**



- Fast-Easy Installation
- Improves Vision
- Rugged Construction
- Increases Mileage
- Enhances Appearance

**GAS MILEAGE INCREASED 15%**

Not All Sizes In Stock -  
Call Ahead For Details



**Ruhl's Automotive**  
83 East Main St., Mt. Joy, PA  
717-653-8057  
Hours: Monday-Friday 9 AM to 6 PM;  
Sat. 9 AM - 3 PM

99+/- acres, stream, timber, Northern Lake George, upstate NY.. \$29,900. 518-765-3784.

All kinds of farms for sale in MD and PA. Smith and Associates Real Estate, Jackie Nichols, (717) 762-8449, (717) 597-8161.

Appomattox, VA: Wooded Acre w/Brick Home, 2400 sq ft., 3 bedrooms, 2 baths, den w/fireplace, garage, hardwood floors 804/352-5676 after 8pm, 804/248-5445 days.

A Stately Home w/Plenty of Charm. Four Bedrooms, Three Baths on Four Acres, Great for Bed and Breakfast. Associated Brokers Real Estate, Wellsboro (717) 724-6833

A very productive farm 3 miles east of Penn Yan, Yates County, NY. 64 acres w/55 tillable. Large bank barn w/33' lean-to. Large frame dwelling w/5BR and 2 full baths, kitchen, laundry, DR, FR and LR. Downstairs is central hot air and upstairs central hot water. House recently painted and remodeled (315) 536-2705

Building or cabin lots, Huntingdon Co., PA. Located within Raystown watershed, 1.694A \$6500 717-266-1083

CENTRE COUNTY FARM FOR SALE: 313 total/ 250 tillable acres; 85 acres alfalfa, 118 cow stall barn has 2" ss pipeline and 2,000 gal. bulk tank w/ manure pit; Second barn w/ heifer shed; 3 large silos w/ unloaders; Farrowing house, sow pen w/ finishing pen, Three 4BDRM homes w/ public water. (814) 422-8441

Dairy Farm: 50 acres in operation now. Milking parlor, 4 individual units, 2 silos w/unloaders, (18x65, 14x40) 35 free stalls, shaker feeder, large shed, garage, good water supply, 3BR home Owner retiring (315) 331-5628 after 7pm

Dairy for RENT/LEASE/SALE 102 free stall, double 6, auto takeoff, 2000 gallon bulk tank, manure lagoon, silage on hand, corn planted, Monroe County (610) 681-4134

DUNDEE, NY dairy farm. 116A, 44 cow dairy farm Pipeline, 3 silos, calf and heifer barns, implement shed, garage, manure system, 2 story farm house, adjacent mobile home. 607-292-3890. Cows and equipment available. 607-292-6880

FARM 200 ACRES Southern Lancaster County, Dairy Operation. Scenic Property Along Octoraro Creek, Will Subdivide in Large Parcels; FARM Chester County, 60 ACRES 5 Bedroom Home Huge Bank Barn Mostly Tillable \$340,000 Call Century 21 Pierce & Bair Patrick Curran (610) 932-5500

Farmland Cambria Co., PA, 343A, 130 cropland, 210 woodland, no wetland, no buildings. 610/353-9518.

GOVERNMENT HOMES from \$1 (U repair). Delinquent tax property Repossessions Your area (1) 805 962-8000 Ext. GH-4156 for current repo list

VIRGINIA 140 acres, 90 opened, 1 1/2 A pond, fenced and crossed fenced, \$145,000 804-248-6645

WANTED Farm to Rent within 1 Hour of Pottstown, PA (215) 287-6689

WISCONSIN DAIRY FARMS, 30 cow to 150 cow, Up, Excellent Prices & Terms for Spring Possession. Call now! L.L. STEWART, Realtors, 2007 Hogeboom, Eau Claire, WI 54701, 715/834-6664.

Grocery Business. Coolers, Freezers and All Fixtures. Ready to Go. 7000+Sq.Ft. Building w/ Parking Lot. Only \$69000. Associated Brokers Real Estate, Wellsboro (717) 724-6833.

HISTORIC HUGHSVILLE FARM: 137A, wood and farmland, easily accessed from I-180, portion of home is original log dating back to 1800's. (3) field stone fireplaces, cherry kitchen, hardwood Oak floors, and many more amenities. For your personal tour call Mary Fish FISH REAL ESTATE, BETTER HOMES & GARDENS 717-326-1561; 717-322-4082.

House, barn, 21A, Lewis Twp, Union Co, \$119,000. 717/539-8676, 717/966-0572 for appointment.

HUNTINGDON CO: 52A prime woodland plus adjacent, 2A open building lot w/twp road frontage Woodland offers excellent hunting w/lots of cleared trials Located south of RT PA 26 between Huntingdon (10 miles), State College (26 miles). Installment sale for qualified buyer \$87,500 717-935-2722; 717-653-1728

Hunting Camp, Centre County, PA 3 acres, wooded, near Sayre Dam for boating, fishing. Call 610-469-6848.

Lewis County, NY: 287A Dairy of Distinction, Super Milk farm, 90 Holstein milkers, excellent soil, woods, streams, 2 lovely homes, 2 abundant water supplies, complete line machinery. Asking \$495,000. Call owner 315-688-4477

Lewis County, NY. 100 Cow Conventional 2-Story Barn, Plus Room for 65 Young Stock, 3 Silos, 4BR Ranch Home, 2 Car Garage, Built in 1981, 260 Acres Tillable A Real Show Place \$350,000 (315) 348-8772

Mountain Land 6 1/2 Acres, Millin County, Decatur Twp, 7 Miles Northeast of Lewistown, Perc approved Asking \$24,000 Close to State Game Lands, Recreational or Fulltime Residence (717) 436-9594.

Northern Ashland County, Ohio dairy, 100 acres, 66 tie stalls, excellent buildings, including machine shed with shop, cattle machinery feed. Six miles to Mennonite community Call 419-652-2310 between 6PM and 10PM

PROPERTIES IN UPPER DAUPHIN COUNTY (4) building lots, R.D. Halifax, 150'x300', \$15,900 to \$17,900 Call Don Miller. 717-896-3252, Agent... 118 Acres of Mahantango Mountainland \$65,000 Call office, 717-692-2206. Many other lots, houses and business properties JCT REALTY, INC 129 Market Street, Millersburg, 717-692-2206

Snyder County: Ranch home, 3BR, garage in basement, 10 acres, 2 out-buildings. \$95,000 717-374-0245 after 2PM

TIOGA COUNTY #493 200+/- Acres, Secluded, Rolling, Stream w/Pond, Great for Hunting, Walking Distance to State Game Lands #521 5BR Ranch on 43 Acres, Pond Under Construction. #428 5BR Ranch on 11 Acres, Beautiful Views of Countryside Contact Endless Mountain Real Estate Co 717-659-5684

**SOUTHERN VIRGINIA FARMS FOR SALE AND LEASE**  
**Freddie S. Smith**  
703/639-2262  
703/382-0570  
after 5 pm

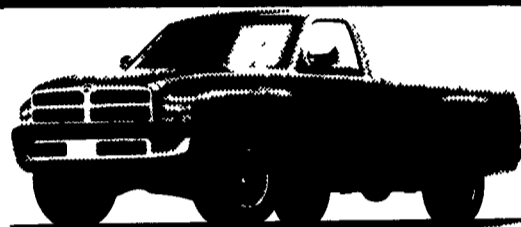
**QUARRYVILLE**



CHRYSLER

PLYMOUTH

DODGE



**The New Ram 1500**

360 High Output  
(Excellent Tow Vehicle and Great for Farm or Highway)

**THE RULES HAVE CHANGED.**



**4x4's IN STOCK**

**\$500.00 Rebate to PA FARM BUREAU MEMBERS**

**The New Ram 2500**

We Have: V-10's and Cummins Diesels in Stock

**Quarryville**

Dodge & Dodge Trucks  
Chrysler • Plymouth

"In The Heart of Southern Lancaster County"

Rt. 222, 1 mile North of Quarryville, PA 717-786-8220

**36**

**REAL ESTATE**

124 Acre (84 tillable, 40 wooded), plus 3BR home vg condition, DuBoise, PA. Asking \$78,000 OBO. Call for appointment 617-861-8713 or write "LAND", POB 401, Lexington, MA 02173.

140 acre dairy farm, in Christian County, KY, Mennonite area, has house, 2 barns, and plenty of water. For more information, call or write Stanley Fritz Real Estate and Auction, 1506 A. Virginia St., Hopkinsville, KY 42240. (502) 885-3117, nights and Sundays, Stanley Fritz, (502) 886-4216.

160 acre & 290 acre dairy farms in central Wisconsin Amish & Mennonite area Owner Financing. Small down payment to responsible party. \$700 per acre. 1-800-248-2151

162 Acre Farm, New Barn, Good House, Susquehanna Co. (717) 434-2103

24X40 2-Story House, 4BR, 2 Living Rooms, Bathroom, Laundry Room, Built in 1989. 24X24 2-Story Garage and Shop 40X164 Pole Barn Built in 1992, 100' 52 Freestall w/80' Bunk Down Center, 800 Gallon Tank, New Put in 7/93, 8 Cow Headlock, 4 Milking Units, Feed Bin Holds 7 Ton (717) 899-7412.

32A farm, house, bank-barn, 18A tillable stream thru meadow. Make offer. HC1, Box-35, Aaronsburg, PA 16820

3 1/2 woodland, borders State Game Land, 5 miles from Raystown resort and Tatman Run Boat Launch Huntingdon Co., PA 717-627-3336

375 A. farm, 200 A. tillable, 10 room house, 62 stall barn, 32-96 bunker, heifer barn, tool shed, new fences, 3 ponds, Steuben Co. N.Y. \$195,000. (814) 326-4188

3 Bedroom house for someone willing to work part time on dairy farm in exchange for rent. 610/593-2274.

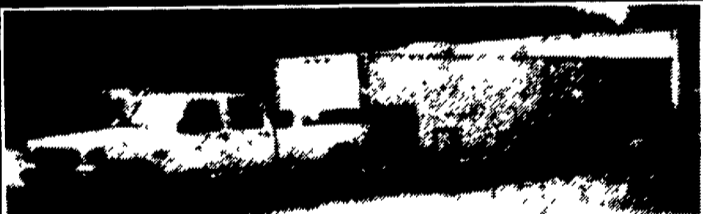
43 Acres of South Christian County, KY Land 2 Miles of Pembroke, KY No Buildings and All Tillable For More Information Call Stanley Fritz Real Estate & Auction, 1506 S Virginia St., Hopkinsville, KY 42240 (502) 885-3117 Nights 6-8 CST Stanley Fritz (502) 896-4216

50 COW DAIRY FARM, 110A, 5BR house, silo, 60 tillable. Gouverneur, NY \$69,900, \$25,000 down 315-347-3751, 615-858-4082.

**OVER 90 TRUCKS**

**Bobby Gerhart's Truck World**

2400 E. Cumberland St. Rt. 422 Lebanon, PA 17042 717-273-7995



**89 Ford 350 Crew Cab**

Dually XLT Lariat, 460 V8, AT, A/C, PW, PL, Cruise, Tilt, Only 45,000 Mi., w/enclosed '89 Motor Sport 45 Ft. Car Trailer, Complete with Work Benches, Generator, Parts Washer, A/C and Much More #F239



**1989 Ford E-350 14 Ft. Box Van**

AT, A/C, 351, V8, Power Lift Gate, Only 61,000 Miles #F244



**92 Ford F150 Super Cab**

4 x4, XLT, Lariat, 302 V8, AT, A/C, Cruise, Tilt, PW, PL, Black & Silver #F240



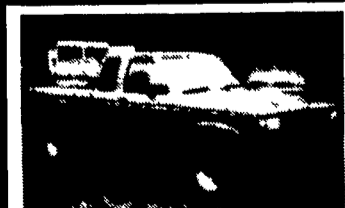
**91 Chevrolet K1500**

Ext. Cab, Short Box 305, Auto O.D. A/C, PN, PL, CR, Tilt, Silverado, Blue/Sil #C186



**77 International Tri-Axle Dump**

400 Cummings Diesel, 13 Speed, Alum. Box, Good Condition #1105



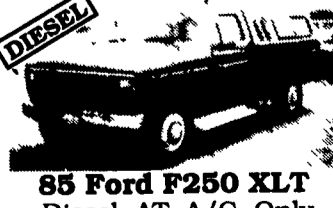
**90 Ford Ranger STX**

Super Cab, 4x4, 4.0 6 Cyl., AT, A/C, Cruise, Tilt, Blue w/Stx Stripe Pkg. #F236



**91 Ford F350 Utility Box**

7.3 Int Dies., Auto O.D, A/C, 8' Covered Utility, Nice Shape #F246



**85 Ford F250 XLT**

Diesel, AT, A/C, Only 75,000 Miles, Charcoal Metallic w/Matching Cap #F230 \$7,995