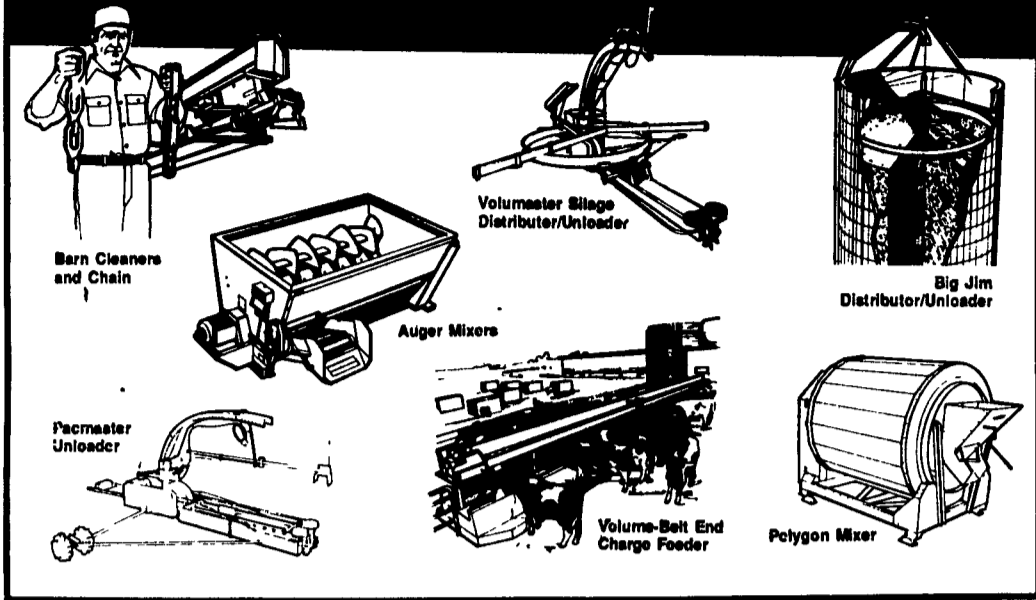
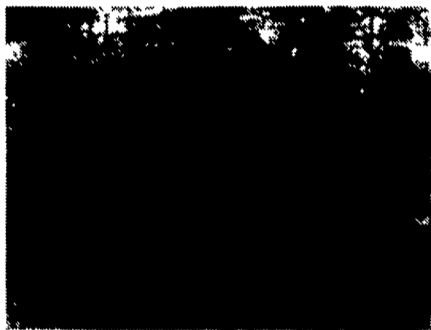


UNLOAD IT, FEED IT, MOVE IT MIX IT... WITH JAMESWAY!



Suspended Comfort Stalls



Also: Automatic Headgates
• Hay Feeders • Water Bowls
• Gates & Fencing And More

Imperial BULK FEED BINS



The Ultimate in Agricultural Feed Bins in a wide variety of sizes. All with a 10 year warranty.



BARN COOLER
12", 20",
24" & 30" **FANS**
IN STOCK

We Stock
• Barn Tile
• Cowmats

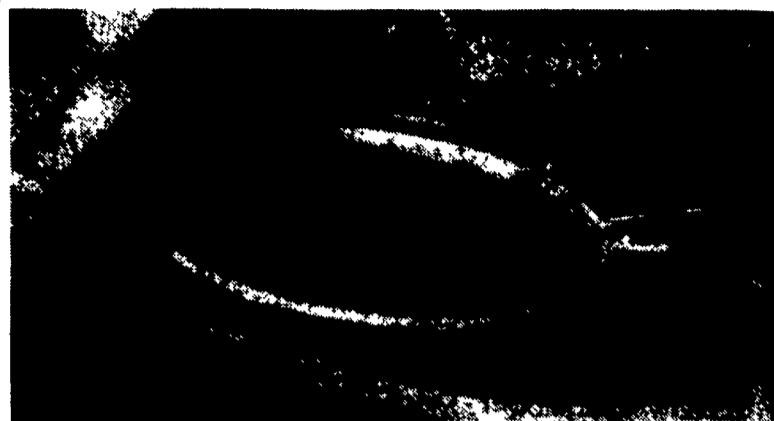
Call Us For
Silo Prices

JAMESWAY **ROVENDALE AG & BARN EQUIP.** **STARLINE**
Watertown, PA 17256
717-538-9564 or 717-742-4226
Established 1930 in Watertown, PA
Hours: Mon-Fri 8:30-5:00, Sat 9:00-12:00



Sollenberger Silos Corp.

Sollenberger Silos Corp.
Quality Concrete Structures
Since Before 1910
Get The Precast Advantage



Poured In Place Concrete Tanks
SCS Approved
6', 8', 10', 12', 14', 16' Depths
Thru 140' Diameter
Even And Uneven Backfill Designs
Commercial Chain Link Fence



Sollenberger Silos Corp.

A Nitterhouse Company
Box N Chambersburg, PA 17201 717-264-9588
Poured Concrete Silos Since 1908

Office Number - 717-264-9588
For Upright Silos Call **Bob Francis 717-532-6848** — Evenings — **Tabb Justus 717-762-8663**
For Bunker Silos & Manure Systems

Sollenberger Silos Corp. - Box N, Chambersburg, PA 17201

Name _____
Address _____
City/State/Zip _____
Phone _____ County _____
Please Send Info. On:
 1. Manure Pits
 2. Bottom Unloading Silos
 3. Top Unloading Silos
 4. Precast Bunker Silos
 5. Feed Bunks
 6. Cattleguards
 7. Industrial Silos/Tanks

Big-Jim Unloader...The Unloader of the Future...Available Today.
For 20' - 24' and 30' Silos, With the Possibility of 40' diameter Silos:
Think of Storing 5,000 Tons in One Tower Silo!



Drive your truck or mixer-wagon under the 12' high floor for fast and efficient delivery of your wilted hay or silage. Eliminate conveyors from silos to mixer.

"IT'S A WHOLE NEW WORLD OUT THERE!"

Tower silos that can hold 4,000 tons of forage!!! This is one of the first major changes in the silo industry since the 1950's when farmers went from 12' and 14' diameter silos to 20' and 24' diameter silos. The industry met the challenge. And Now, Sollenberger Silos Corp. is stepping up to meet the challenges of the '90's and beyond. The larger dairies need storage units that will hold 2,000 tons and more, and be able to deliver the feed without spending "Hours Per Day." The poured concrete tower silo is the silo to store the feed, and the Big-Jim Distributer/Unloader is the system to deliver the feed. Today's business-oriented dairymen realize that "Forage Quality is often the single most important factor affecting their profit," and as a result they are searching for ways to store the feed, and deliver it to the cow in the best condition possible. "The tower silo may very well be the best investment that a dairy farmer can make!!"

Store your feed in a poured concrete silo, let gravity do the packing, and deliver the feed directly into your truck or mixer. "Save \$20,000 or more per year on machinery and labor costs to store and deliver your feed, compared to bunker silos."

The tower silo may cost more, but labor, machinery, and feed quality savings will pay the difference in 3 years or less. "The Blizzard of '93 and the severe winter of '94 greatly increases your appreciation of the concrete tower silo."

It is time once again to get serious about storing your valuable feed.

MEMBER: International Silo Assn. - Am. Society of Agric. Engrs. - PA. Forage & Grassland Council

CALL FOR AN APPOINTMENT TO DISCUSS YOUR STORAGE NEEDS AND ASSISTANCE IN COMPLETING THE "COST ANALYSIS WORKSHEET" DEVELOPED BY THE CROP STORAGE INSTITUTE
Bob Francis (717) 264-9588



JUST COMPLETED...This 30'x100' poured concrete silo with drive-thru for loading directly into your mixer wagon or truck-mounted mixer. The Big-Jim System will deliver over 1000 lbs. per minute of corn silage. Just think...you don't need 6 silos and 6 unloaders to store this much feed...and better yet, you do not have to store your valuable feed on the ground and try to protect it with plastic and used tires!!!



Sollenberger Silos Corp.

