

Pennsylvania DHIA Herds

(Continued from Page C5)

DONALD M BRIDGER	38.5	16464	589	3.6	515	3.1
JOHN L KAPANICK	44.8	15928	629	4.0	507	3.2
LAMB FAMILY FARM	28.2	15875	566	3.6	502	3.2

CUMBERLAND

AL HART HOLSTEINS	52.4	23203	698	3.0	744	3.2
CURTIS + ANN DAY	54.6	22554	879	3.9	729	3.2
J PAUL STROCK	113.2	22415	799	3.6	715	3.2
HAROLD E MYERS	59.6	21638	815	3.8	709	3.3
STEVE + MARY REESE	32.9	21922	777	3.5	706	3.2
GLENN NEWSWANGER	83.6	21095	772	3.7	680	3.2
FRED B MC GILLVRAV	52.3	21321	736	3.4	674	3.2
M THOMAS SHEAFFER	59.6	21126	807	3.8	670	3.2
GLENBERN FARM	62.2	21077	734	3.5	668	3.2
ROBERT E KEEFER	182.1	20943	718	3.4	667	3.2
DAVID E GETTLE	46.0	20575	807	3.9	664	3.2
LOWMI A WICKARD	54.4	20502	774	3.8	663	3.2
DONALD A MCCULLOUGH	105.2	20183	791	3.9	661	3.3
PAUL M SNYDER	45.8	21418	775	3.6	659	3.1
MARK A NAUGLE	56.9	20719	765	3.7	656	3.2

DAUPHIN

CRISSINGER DAIRY FRM	86.5	23403	678	2.9	759	3.2
CATALPA FARMS	135.1	22653	792	3.5	730	3.2
RESTFUL ACRES	116.0	22122	835	3.8	707	3.2
ELWILLO FARMS	189.9	22091	786	3.6	704	3.2
STANLEY R LONG	135.6	21305	742	3.5	670	3.1
MAHLON L LEHMAN	71.9	20565	745	3.6	662	3.2
PLEASANT HILL FARMS	80.8	20621	776	3.8	661	3.2

ALWINE FARMS	85.7	20239	783	3.9	658	3.3
JOHN HERTZLER	69.7	19947	687	3.4	657	3.3
STONEY LAWN FARMS	109.3	20039	691	3.5	655	3.3
TOBY T FARM	62.1	21061	752	3.6	654	3.1
GREAT VIEW FARM	45.4	20391	772	3.8	654	3.2
J MELVIN BRANDT	82.5	20168	785	3.9	649	3.2
DALE F FAUST	52.2	18843	642	3.4	626	3.3
NY-FAVORITE HOLS	51.0	20092	651	3.2	620	3.1

RONALD BUERK	28.3	18599	685	3.7	603	3.2
V BELL FARMS	62.5	18501	705	3.8	583	3.1
TIMBERS EDGE	24.4	14182	667	4.7	550	3.9
PAUL SWANSON	33.5	16956	654	3.9	545	3.2
FRED W GREGORY	36.8	15711	576	3.7	500	3.2

FRANK POLLOCK JR	27.9	24076	868	3.6	738	3.1
HOW RICH FARMS	68.1	22490	889	4.0	712	3.2
RONALD L CHAPMAN	41.1	22717	859	3.8	711	3.1
PAUL AND MATT SEMITA	52.8	20847	837	4.0	701	3.4
GREENE SUMMIT FARM	44.1	22058	800	3.6	697	3.2
RALPH GILKINSON	37.8	22336	826	3.7	696	3.1
CONCORD RIDGE FARM	136.7	21842	841	3.9	694	3.2
RICHARD GIEMONT	37.4	21819	788	3.6	682	3.1
BISBEE FARM	203.7	21022	755	3.6	681	3.2
LEO K MC CRAY	114.5	21116	748	3.5	672	3.2
WOODS DAIRY	90.2	21129	775	3.7	661	3.1
WALTER + LISA ROYER	31.1	20793	758	3.6	660	3.2

ART + CONNIE WETHORE	37.1	20444	807	3.9	653	3.2
GEORGE C HEINTZ	17.9	20400	718	3.5	652	3.2
LIND FARM	60.2	20460	725	3.5	646	3.2

FAYETTE

R BROWN STOWEE-RIDGE	65.5	21547	706	3.3	691	3.2
ORR FARMS	117.6	22346	783	3.5	690	3.1
JACKSON FARMS	142.4	21096	742	3.5	663	3.1
LOIS J MARIETTA	32.1	20157	706	3.5	656	3.3
EDWARD BURGWORTH	61.4	19481	707	3.6	653	3.4
RALPH HAY	41.7	20843	743	3.6	648	3.1
ROBERT JACKSON	107.0	19889	689	3.5	636	3.2
HERRING FARMS	81.1	19422	763	3.9	626	3.2
ALBERT J PERENS	113.1	19822	723	3.6	607	3.1
ALVIN DIAMOND	106.9	18858	690	3.7	601	3.2
STEVE KOOSER	50.2	18142	670	3.7	585	3.2
ALLEN HILL DAIRY	58.5	17494	654	3.7	570	3.3
KAMP FARMS	82.5	17793	649	3.6	564	3.2
JAMES G POORBAUGH	124.7	16724	633	3.8	528	3.2
GARY THOMAS	40.3	15417	585	3.8	500	3.2

FOREST

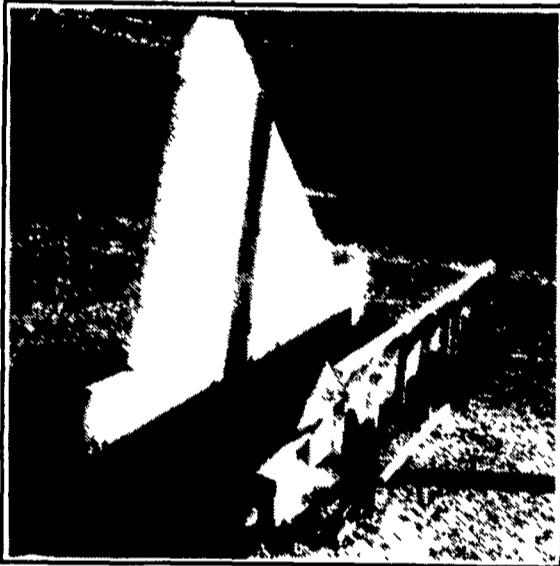
CARL VIVIAN FRENZ I	74.7	18277	673	3.7	600	3.3
---------------------	------	-------	-----	-----	-----	-----

FRANKLIN

RV + SV HOLLENSHEAD	139.6	27574	1118	4.1	871	3.2
DOUG-BARB MC CULLOR	109.0	22976	750	3.3	749	3.3
STONE HART FARM	115.5	22820	799	3.5	742	3.3
ROBERT E HARDWOOD	122.5	23403	862	3.7	742	3.2
HORSTDALE FARM	100.3	23464	858	3.7	735	3.1
CULBERTSON GREEN FM	120.1	23806	809	3.4	733	3.1
ROBERT FARMS	177.9	22032	776	3.5	714	3.2
JANESANIMA BURDETTE	63.5	21759	805	3.7	713	3.3

(Turn to Page C9)

ALUMINUM CORN BINDER LOADER



- Light-Weight Durable Aluminum
- All-Belt Conveyor: No Chains To Break Or Add Weight
- Pillow Block Bearings
- Lighter Than Wooden Loaders
- Corn Slides Easier On Aluminum Than On Wood
- Available In Either Hydraulic Or Mechanical Drive

BARTVILLE WELDING SHOP

1245 Noble Rd., Chesham, PA 17009 (at Bartville)

B&B SPRAY PAINTING SANDBLASTING

Quality That's Affordable



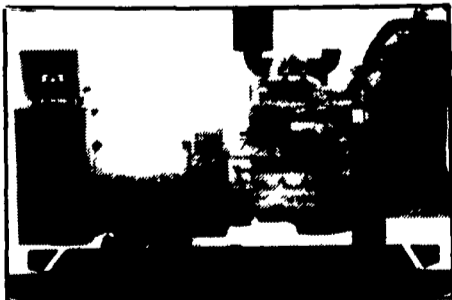
Spray Roll Brush

Specializing In Farm Buildings, Feed Mills - Roofs - Tanks - Etc., Aerial Ladder Equip. Stone - Brick - Restoration

Gibbon's Rd. RD #1 Bird-in-Hand, Pa.

Answering Service (717) 354-5561

GENERATORS



AUTOMATIC and MANUAL SYSTEMS

DIESEL
L.P. GAS
NAT. GAS
NEW & USED



LEROY SOMER PTO ALTERNATORS

BRUSHLESS INDUSTRIAL GRADE
11 to 60 KW

READY FOR THE NEXT STORM?

For Sales and Service Call The People Who Know Generators

MARTIN ELECTRIC PLANTS

280 Pleasant Valley Rd., Ephrata, PA 17522-8620

Tel. 717-733-7968 Fax: 717-733-1981

B&M DELIVERS.

"A Good Value in Treated Fence Posts and Poles."

- Creosote or CCA-treated Wood Posts, 6'6" or 8' long.
- CCA-treated Barn Poles, 10' to 25' long.
- 25-year guarantee against rot and termites.
- 18-gauge tubular steel gates from 4' to 16'.
- Call us for the phone number of the dealer nearest you.

DOUGLASS WOOD PRODUCTS, INC.

4137 Manor-Millwood Road,
Manor, Georgia 31550
912/283-0353 • Toll Free 1/800/451-0385

