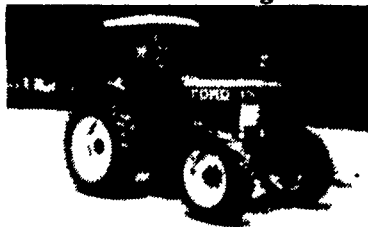


TANEYTOWN FARM & HARDWARE
410-751-1500

Bush Hog® King Kutter
Ingersoll Garden Tractors



Ford 6710 4x4 w/Cab & Air
\$15,900



MF 1155 Runs Good
\$4,900



Int. 574 Dsl. w/Loader
\$4,500



JD 3010 Gas, WF, New Tires
\$4,250

Ford 1500 4x4 w/new Bush Hog Loader.....	\$6,500	JD 16A chopper.....	\$395
Int 585.....	\$6,500	JD 38 2R chopper.....	\$395
Int 585.....	\$5,500	Set of Cub cultivators.....	\$250
MF 30 w/loader.....	\$4,900	NI conditioner #270.....	\$795
Case SC/Cultivators, one owner.....	\$1,595	(2) JD 256 rake.....	\$1,495
JD 4020 S R Old style.....	\$6,900	NH 4.....	\$1,795
JD 850 w/loader.....	\$5,900	Wood.....	\$2,750
Ford 4000 w/loader, as is.....	\$2,900	JD 336 Baler w/thrower.....	\$2,850
Ford.....	\$3,900	JD 9' blade.....	\$1,150
David.....	\$4,695	Shaver drivers, HD8 \$1,095 HD10.....	\$1,695
9N Ford.....	\$1,350	Rubber rake teeth.....	\$1.59
MF 135, 2700 hours.....	\$4,250	20% off list on all Bush Hog® loaders.....	Call For Prices
MF 282.....	\$5,900		
NI 272 conditioner.....	\$995		
Hesst.....	\$2,495		

SUMMER SPECIAL!

Bush Hog® 2615 backing mower, fully equipped
List.....\$10,705 Special Price.....

USED TRACTORS

JD 7020, 145 h.p., 4 whl., duals, cab, reduced.....	\$17,000	\$15,000
JD 5020, 145 h.p., new tires, good, reduced.....	\$11,500	\$10,500
JD 4020, ROPS, power shift, new overhaul.....		Coming In
JD 755, 4WD, mower & loader.....		
IH 706, gas.....	\$ 4,000	\$ 3,500
Case 430, gas.....	\$ 3,500	\$ 3,000
Case IH 234, 4WD w/loader & front blade.....		\$7,500
Farmall Cub w/Belly Mower, Blade, Very Good.....		

RECONDITIONED COMBINES

JD Financing Available - Interest Free Till Jan. 1, 1995

NEW JD 9500.....	In Stock
JD 9500, just in, like new, low hrs.....	
'85 JD 6620 Sidehill Titan II, excellent.....	\$46,500
'84 JD 6620 Sidehill, excellent.....	\$38,000
'75 JD 7700, 2,900 hrs., good.....	\$15,000
'78 JD 6600 Sidehill, good.....	\$18,500
'73 JD 6600, 2,675 hrs., good.....	\$14,500
'79 JD 4400, dsl., 2,163 hrs., alr, good.....	\$16,500
'74 JD 4400, dsl., 2,025 hrs., good.....	\$12,500
'73 JD 4400, gas, good.....	\$ 7,500
'76 JD 3300, diesel w/244 corn head.....	\$ 9,500
Gleaner L, good w/platform.....	\$ 8,000
Gleaner K, good w/platform.....	\$ 4,500
Gleaner F w/platform & 4R cornhead.....	\$ 9,500
NI #10 Corn Picker, 1R.....	\$ 850
NI 329 Sheller.....	\$ 2,500

COMBINE HEADS

NI 843 Corn Head 3RN.....	
MF & AC Cornheads 4R & 6R.....	
NI 843N 3 row snapper head.....	
JD 244 corn head, good.....	\$ 1,800
(2) JD 13' quck tach platforms.....	

New JD 1219 mower conditioner ~~\$12,400~~ Sale Price \$9,500

HAY, FORAGE & MISC.

NI 868 harvester, grass head, 774N, excellent condition for Uni System.....	\$12,000
NH 770 Harvester w/heads.....	\$ 4,500
JD 3800 harvester.....	\$ 2,500
JD 530 round baler.....	Coming In
NI 486 round baler.....	\$ 7,500
JD 350 sickle mowers, 7'.....	\$ 2,100
'78 Chevy C65 tractor w/427, 13 spd., Henderson susp, wetline, good.....	\$ 6,500
Great Plains, no-till drill, 10', rental machine.....	\$11,000
JD 785 hydro-push spreader, endgate & top beater, 1 yr. old.....	\$11,500
NI 2 row pull type picker.....	
JD 700 grinder mixer.....	
JD 1018 rotary cutter, Penn State Lease.....	
JD 150 forage blower, like new.....	
JD 930 3 pt. roller harrow.....	\$1,500
Used 4x2 Gators & 626 AMT's.....	

1-800-241-2161

LOST CREEK IMPLEMENT

Rt. 35 Oakland Mills, PA 17076
Between Mifflintown & McAlisterville
717-463-2161



AG TELEXCHANGE
1-800-876-FARM

For as little as \$10.00 list
the farm equipment you have for
sale for 90 Days.

**CALL US FOR ALL OF YOUR
FARM EQUIPMENT NEEDS**
1-800-876-FARM
To Buy or Sell Farm Equip.

TO BUY:
* Absolutely Free
* Call for list today

TO SELL:
* For as little as \$10
* 90 Day or 1 yr. listing



P.O. Box 96 • Midland, VA 22728
fax: (703) 439-9344

Take Exit 20B
Off Of 83, 5 1/2 Mi. West
To Belmont Farm.



IH 1086
130 HP, CAH, Twin Shaft, Twin
Outlets, T/A, Fresh Engine Overhaul
3,300 Original Hrs.
\$11,500
410-833-9091

Best Buys in Used Equipment

USED EQUIPMENT

Farmall 300, gas w/fast hitch
500 gallon tow type sprayer, 26'
boom, roller pump
6 ton running gear
5' sickle mower for Farmall A or
Super A
7' pull type NI sickle bar mower
(1) NH 489 mower conditioner
Brillion 16' transport harrow

IH model 70 3^{SOLD} pull type plow
JD 2 row corn head
Woods M5 Dixie 5' rotary cutter
Woods 121 pull type rotary cutter
IH 183 4 row cultivator
5' pull type grooming mower, \$375
IH 456 4R Cornplanter, dry fertilizer
w/insecticide

Unverferth gravity boxes in stock

We Ship Parts UPS Daily

BANGOR IMPLEMENT

6 Flicksville Rd., Bangor, PA 18013

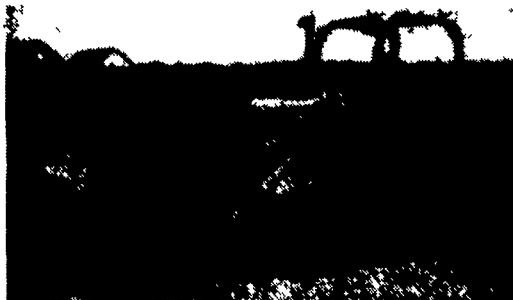
215-588-5922 or 215-588-5924



J & F EQUIPMENT

(717) 859-3283

No Reasonable Offer Refused
Custom Repairs On All Makes Industrial & Farm Equipment



JD 555 Rebuilt Transmission
\$15,000



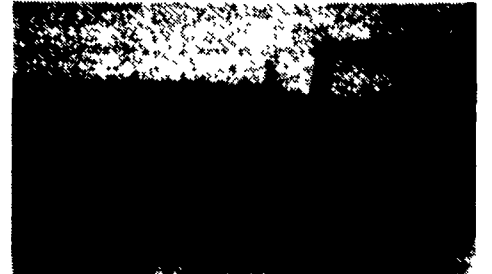
Bobcat 642B w/2 Buckets, 1 Fork
\$7,800

WE ARE BUYERS FOR CONSTRUCTION EQUIPMENT NEEDING REPAIRS

Case 1835B Skid Loader.....	\$7,200
Case 850B Crawler Loader, good cond.....	\$13,500
JD 350 or 450 ripper, good condition.....	\$1,000
JD 350 Crawler Loader, choice of 2.....	\$8,000/ea.
JD 350C Crawler Loader, good condition.....	\$13,000
JD 450C, 6-way blade, rebuilt motor, and trans., like new U/C.....	\$15,500
'84 JD 455D, New Tracks.....	\$18,500
Komatsu D65S Crawler Loader.....	\$10,500
Dresser TD7E 6-Way.....	\$13,500



Cat 955L \$15,500



Komatsu D31S \$12,750