

Keystone Peterbilt, Inc.

1467 Manheim Pike • P.O. Box 4396 • Lancaster, PA 17604

1-800-243-2458



717-299-6630



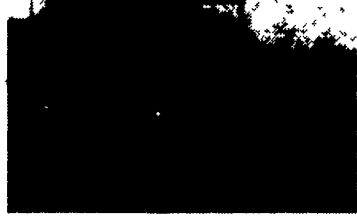
1984 PETERBILT 372 - FNIC-300; RTO11613; R-170-3.55; Pats Air Trac



1987 PETERBILT 349 - NTC 350 (LFC) 350 HP; Eaton DS381 40,000 Lbs.; Fuller RT012609B 9 Speed; PB, Air Leaf w/Track Rods



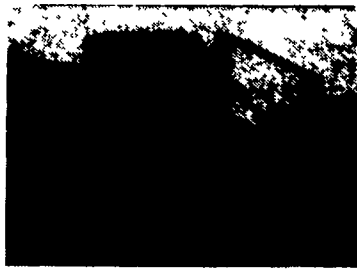
1986 VOLVO F-70 033605 22' Flat Bed, F-30 Waltco Gate, Good Cond.



1989 MACK MS300P 67698 22' Flat Bed, 93,531, Excell. Cond.



1978 PETERBILT 359519 - NTC 400 Engine w/400 HP; RTO 12513; DS 380 Rear Axle w/4.11; 36" Sleeper



1988 MACK MS250P MACK SPICER, - 5-Speed CM5552/Renault MC2 Engine 20' Reefer, Swing Rear, Side Door, RD1-30 Thermo King

- ## THOMPSON MOTORS INC.
- Repairable Vehicles Bought & Sold
 - Springtown, PA 215-346-8588
 - 92 GMC Safari Van, light damage.....\$10,500
 - 89 Jeep Cherokee 2 dr., loaded.....\$7,200
 - 91 Capri convertible, front damage.....\$3,500
 - 88 Chevy 1/2 T. Pickup, R. side damage..\$3,900
 - 86 Isuzu Trooper, left side damage.....\$3,500
 - 88 Ford F250 4x4 dually, front damage....\$7,500
 - 93 Ford F150 4x4 XLT, water damage....\$13,000
 - 78 Corvette, left front damage.....\$2,900
 - 91 Blazer S10 4 door, water damage.....\$10,500
 - 90 Jeep Cherokee, right side damage.....\$3,900

FOR SALE:

1978 Fruehauf Electric Reefer Trailer, Refrigerated 42 Ft.

\$7,900

Call 1-800-327-4406 or 610-273-3776

For More Information

"FREE CATALOG" CALL OR WRITE

TOOL SHED OF AMERICA

DEPARTMENT L F
4294 EAST HARRISBURG PIKE
MIDDLETOWN, PA 17057

HOURS: Mon.-Fri. 9-6
Saturday 9-2
Sunday - Closed

(717) 944-0318

DIRECTIONS TO OUR MIDDLETOWN STORE- On your road map, we are on Route 230 mid way between Middletown & Elizabethtown. Take the Toll House Rd. exit off Rt. 283, turn and go to stop at Rt. 230, go east on 230 1-1/2 mi. on the right.

4x8, 5x10, 6x12 UTILITY TRAILERS STARTING AT \$499

ALL TRAILERS BUILT "IN OUR SHOP"

CAR HAULER AS LOW AS \$1,474

STANDARD FEATURES - 16" DIAMOND STEEL DECK, BOX TUBE FRAME, JACKS, CHAINS, ALL WHEEL ELEC. BRAKES & MORE. USE YOUR OWN WHEELS/TIRES & SAVE \$225 OFF OUR LOW PRICE OF \$1,699. WOOD DECK AVAILABLE.

"TRAILER PARTS"

ANGLE & CHANNEL IRON, BOX TUBING, LIGHTS AXLES, COUPLERS, WIRING, CHAINS & TIEDOWNS, Etc., Etc.

CLASS III HITCH RECEIVER 10,000 Lb. MGTWR, In Stock For Most Domestic & Import Pickup Trucks & Vans. FOR MOST POPULAR FORD CHEV. & DODGE PICKUPS and FORD EXPLORER KIT OTHER APPLICATIONS UP TO \$99.95

\$79.95

AUTOBODY PARTS, PAINTS & SUPPLIES

- 73-79 CHEVY, FORD, TK FENDERS \$39.95-\$49.95
- BODY FILLER-CASE OF 4-GAL. \$33.95
- ACRYLIC ENAMEL PAINT AS LOW AS \$28.95
- URETHANE HARDENER DOES A GAL. \$12.95
- SANDPAPER-6" DA SELF ADHESIVE, 100 PER ROLL LOW AS \$18.50, ALSO DRY BACK DA, WET & DRY SHEETS, LONG FILE!

100% OF OTHER ITEMS AT BIG SAVINGS!!

JONES

PONTIAC • HONDA GMC TRUCK

1335 Manheim Pike, Lancaster

LANCASTER'S LARGEST GM Truck Dealer & We're Getting Bigger

Prices based on straight sale, Tax & Tags extra. Trades accepted at actual cash value. Must present this ad at time of purchase for sale price.

717-394-0711

JONES BEST BUY USED TRUCKS

<p>'88 CHEV SUBURBAN 3/4 4x4. 9 Pass., AT, AC, 350 #5306 Was \$11,900 SALE \$9,950</p>	<p>'93 GMC YUKON 4X4 AT, AC, 350, Loaded #5209 Was \$25,900 SALE \$24,200</p>	<p>'91 PLYMOUTH VOYAGER LE, V6, AT, AC, 7 Pass #5250 Was \$14,900 SALE \$12,700</p>	<p>'91 CHEV S10 4x4 V6, Durango, 5 Spd. #5243 Was \$12,900 SALE \$9,950</p>	<p>DIESEL '91 GMC K15 XCAB 4X4 5 SPD., AC, SLE, #5147 Was \$18,900 SALE \$17,100</p>
<p>'92 CHEVY XCAB C30 Dually, 454, AT, AC, Silverado, #5311 Was \$23,900 SALE \$20,950</p>	<p>'86 FORD F150 4x4 5 Spd., 300 PS #5220 Was \$7,995 SALE \$5,900</p>	<p>'91 GMC K1500 4x4 Sportside, AT, AC, 350 #5258 Was 15,995 SALE \$14,700</p>	<p>'90 FORD F250 4x4 XLT, AT, AC, V8 #5305 Was \$15,900 SALE \$13,800</p>	<p>DIESEL '89 GMC C30 Utility Body, Liftgate, AT, 47,000 Miles, #5312 Was \$12,995 SALE \$11,100</p>
<p>'89 GMC SUBURBAN 4X4 SLE, AT, AC, Trailer Pkg., 47,000 Miles #5162 Was \$15,995 SALE \$14,400</p>	<p>'89 DODGE CARAVAN SE V6, AT, Air Was \$8,900 SALE \$7,900</p>	<p>'91 CHEV K20 4x4 350, AT, AC, Silverado #5244 Was \$18,900 SALE \$16,700</p>	<p>'92 GMC SUBURBAN 4x4 SLE, AT, AC, V8 #5297 Was \$25,900 SALE \$23,200</p>	<p>'88 CHEV C30 1 Ton, AT, AC, 454, 48,000 Miles, Silverado #5294 Was \$12,900 SALE \$11,100</p>
<p>'88 GMC C30 XCAB SLE, AT, AC, 454 #5296 Was \$13,995 SALE \$12,700</p>	<p>'88 CHEV CONVERSION VAN AT, V8, AC, TV, #5137 Was \$10,900 SALE \$7,750</p>	<p>'93 CHEV K15 XCAB 4x4 Silverado, AT, AC, 350, 9000 Miles, Dk. Gray #5255 Was \$23,900 SALE \$21,300</p>	<p>'90 GMC K15 4x4 AT, AC, 4.3, V6, #5281 Was \$11,900 SALE \$9,300</p>	<p>'91 GMC SONOMA SLE, AT, AC, 4.3 V6 #5231 Was \$11,900 SALE \$9,475</p>