

## Public Auction Register

Closing Date Monday 5:00 P.M.  
of each week's publication

SAT. JUNE 18 - 9:30AM  
Real estate, household  
antiques, guns, Held at  
1001 Old Manchester Rd.,  
Westminster, Md., Carroll  
Co. From Westminster,  
take Rt. 27, E. approx. 1

mile, turn rt. onto Cranberry  
& Old Manchester Rd., and  
proceed 1 1/2 miles to Auc-  
tion on right. Estate of  
Jesse & Mildred Null. Nevin  
E. Tasto, Auct.

SAT. JUNE 18 - 9:30AM  
3BR well-maintained brick  
home, antiques, house-  
hold, tools, 1985 Mercury  
grand Marquis. At 3738  
Norrisville Rd., Jarrettsville,  
Md. Isernock Aucts.

Lancaster Farming, Saturday, June 18, 1994-B29

SAT. JUNE 18 - 9:30AM  
Estate of George O. Pen-  
sylv. 58 S Market St. (along  
Rt. 54, 1/4 mile S. of the

intersection of Rt. 487 &  
54), Elysburg, Pa. Execu-  
tor: George B Pensyl. Mark  
J. Jones, auct.

2  
Locations

# ABSOLUTE AUCTION COMPLETE LIQUIDATION AT AUCTION EXTREMELY LARGE SECURED CREDITORS SALE OF WEDNESDAY, JUNE 22, 1994

PLUM RUN ROAD LOCATION at 9:00 A.M. and SHADY LANE ROAD LOCATION at 5:00 P.M.  
SHORT GAP, WEST VIRGINIA

AUCTION NO. 1 • Beginning at 9 A.M.

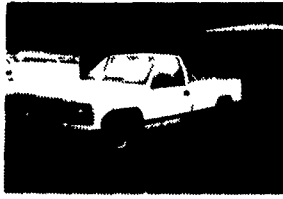
Located at the PLUM RUN ROAD SHEET METAL SHOP FACILITIES



CINCINNATI 1410 POWER SHEAR



CASE 580B



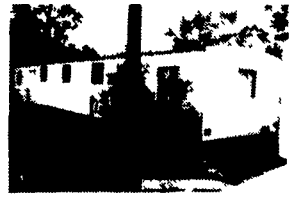
1990 CHEVROLET C20



1990 GMC 2500



WYSONG 220-16 BRAKE



ATWOOD 14x70 OFFICE TRAILER

### 22 VEHICLES

1991 FORD F150 Pickup, 6 cyl. gas, 4-speed, VIN IFTD15Y6MNA95578; 1991 FORD XLT 4x4 Pickup, V-6, gas 8' bed, A/T, power equipment; 1990 CHEVROLET 1500 Pickup, V-6 gas, A/T, VIN 2GCEC14ZOL1184649; 1989 FORD 250 4x4 Pickup, A/T; 1988 GMC 2500 Pickup, V-6 gas, 4-speed, VIN 1GTFC24Z3JE535396; 1988 GMC 2500 Pickup, V-6 gas, 4-speed, VIN 1GTFC24Z5JE520057; 1988 FORD F150 Pickup, 6 cyl. gas, 4-speed, VIN 1FTEF15Y5JNB51199; 1988 FORD F150 Pickup, 6 cyl. gas, 4-speed, with OD, VIN 1FTDF15YXJNA07207; 1987 FORD F250 Pickup, V-8 gas, A/T, A/C, VIN 1FTEF25N4HN831600; 1987 GMC 2500 Pickup, V-8 gas, 4-speed, VIN 1GTFR24H6HF701355; 1986 CHEVROLET C20 Pickup, V-8 gas, 4-speed, VIN 2GCF24H4G1199680; 1986 CHEVROLET Custom 10 Deluxe Pickup, V-8 gas, 4 speed; 1985 GMC 515 4x4 Pickup, V-6 gas, 4-speed, VIN 1GTCT14B9F2542622; 1980 FORD F350 Flatbed, V-8 gas, 4-speed, F372-KGG8689; 1973 DODGE C200 Utility Body Truck, V-8 gas, 4-speed, VIN D218E4S176307; 1973 FORD 350 Stake Body Truck, V-8 gas, 4-speed, VIN F37YCS6344; 1973 INTERNATIONAL 1700 Dump Truck, V-8 gas, 5-2 trans., VIN 106-72CHA21834; (2) FORD Pickup Trucks, for parts and other parts vehicles.

### CONTRACTORS EQUIPMENT

CASE 580B Loader Backhoe, s/n 5232878, EROPS, GP front bucket, 18" hoe bucket; INGERSOLL-RAND Gyro Flo. Air Compressor, 125 gas engine, trailer mounted; YALE 2,500-Lb. Riding Forklift, s/n M223950; (4) Assorted Jack Hammers; 2" Water Pump, with gas engine; STONE Mortar Mixer, 5 HSP gas engine, trailer type; INGERSOLL-RAND Dual Cylinder Air Compressor, with 50-gallon tank; Mortar Mixer, with electric motor, trailer type; (2) WACKER Gasoline Powered Tampers; (8) Gang Boxes of Assorted Sizes; Sandblaster.

### TRAILERS

Tri-Axle Equipment Trailer, VIN E11354001328U; WILLIAMS 8x28 Office Trailer; (2) 24' Tag-A-Long Job Trailers; (3) Storage Trailers; 22' Fiberglass Van Box.

### SHEET METAL SHOP EQUIPMENT

CINCINNATI 10' Power Brake, approximately 150-ton, with 19 dies and 1-4 sided form bar; CINCINNATI 1410 Power Shear, 3/16" mild steel capacity, s/n 11524; WYSONG 10' Hand Brake, Model 22016, 16 gal. capacity, s/n HB3161; WYSONG 1652 4' Shear, 16 ga. capacity, s/n F011948; PSW 418E 48" Power Roller, 16/18 ga. capacity, s/n 11/66; 8' Power Roller; ROCKWELL 20' Bandsaw; Savage Metal Punch; NIAGARA Roll Former, s/n 70629; LOCKFORMER Crimper, 18 ga. capacity, s/n 1412; LOCKFORMER Form Machine, 16 ga. capacity, s/n 12472; LOCKFORMER Form Machine, 20 ga. capacity, s/n 3772; LOCKFORMER Form Machine, 18 ga. capacity, s/n 1014; ARB-A-SAW 16" Cut Off Saw, manf., 1973, s/n CB1827; PEXTO 36" Hand Rolls; PEXTO Hand Crimper; 24" Hand Binder; EMPRO Metal Notcher, 10' in length, s/n 3101152; LOWTHWAITE Manual Angle Iron Shear; CRAFTSMAN Double Bench Grinder; DELTA Floor Model Drill Press; CRAFTSMAN Floor Model Drill Press; BUFFALO Pedestal Grinder; HIJACKER Lift.

### OFF-SITE AUCTION ITEMS

To be sold at Auction No. 1 Site on Plum Run Road at  
Sheet Metal Shop Facility

#### LOCATED AT WESTVACO FACILITY WESTERNPORT FOR INSPECTION

ATWOOD MOBILE PRODUCTS 14x70 Office Trailer, s/n 104399, 8,000-lb. tongue weight, 2-5/16 ball hitch, central A/C, bathroom facilities, with (2) private offices. DIRECTIONS TO INSPECTION SITE: Located near the main gate of West Virginia Co.'s Pulp Mill at Westernport, turn left at the guard shack and trailer will be the last one on the right.

#### LOCATED AT THE ROUTE 36 WAREHOUSE - WESTERNPORT FOR INSPECTION

Located at this location is a 1967 CHEVROLET C50 School Bus; FORD Pickup Truck, (parts only); 36' Aluminum Storage Trailer; Lot of Steel and Cast, 4" to 10" diameter; Steel Man Cage, (3x5 foot enclosed); Saddle Type Truck Tool Box; Assorted Used Steel, Pipe, Beams, Angle and Flat Steel; Assorted Wood Shelves and Racks; (2) Large Power Transfer Boxes and Other Miscellaneous Items.

DIRECTIONS TO INSPECTION SITE: From Westernport, take Route 36 north approximately 1 mile to site on left.

NOT RESPONSIBLE FOR DESCRIPTIONS OR TYPOGRAPHICAL ERRORS

**DIRECTIONS/ACCOMMODATIONS:** DIRECTIONS — AUCTION #1 SITE: From Cumberland, Maryland off US Routes 40/46 at exit 43B onto Route 51 South (Industrial Blvd.) one mile south to Route 28 turning right and proceeding approximately 5 miles to Plum Run Road turning left .3 mile to site.

DIRECTIONS — AUCTION #2 SITE: From Auction #1 Site, take Route 28 South approximately 1.5 miles to Route 956 turning right .3 mile to Shady Lane, turning right, 200 yards to site.

SALE SITE PHONE: (NONE) Please contact the Auction Company at (301) 739-0538.

AIRPORT: Cumberland Municipal Airport is served by Cumberland Airlines, (304) 738-8640.

AREA ACCOMMODATIONS:

AUCTION HEADQUARTERS:  
Holiday Inn of Cumberland.... (301) 724-8800; Braddock Inn (Best Western), LaVale.... (301) 729-3300; Super 8 Motel, LaVale.... (301) 729-6265.

**INSPECTION:** Tuesday, June 21, between the hours of 9:00 A.M. to 4:00 P.M. at all locations.



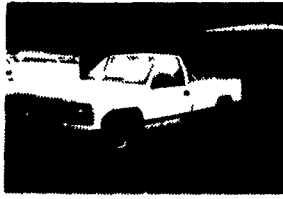
ACM MECHANICAL CONTRACTORS



CINCINNATI 1410 POWER SHEAR



CASE 580B



1990 CHEVROLET C20



1990 GMC 2500



WYSONG 220-16 BRAKE



ATWOOD 14x70 OFFICE TRAILER

### 25 WELDERS

MILLERMATIC 35 100 AMP Welder, s/n KA20179; MILLERMATIC 35 100 AMP Welder, s/n JK640298; MILLERMATIC 200 AMP Welder, s/n JC654197; MILLER Zipcut Plasma Cutter, s/n JE816411; MILLER Dialarc HF 105 AMP Welder, s/n JG060122; LINCOLN Idealarc 250 AMP Welder, s/n AC681974; LINCOLN Idealarc 250 AMP Welder, s/n AC598293; THERMAL Dynamics PAK 10XR Welder, s/n Y91902-A183501D; DURO DYNE Spot Welder, s/n 40485; IDEALARC 250 AMP Welder; P/TRON 75 Welder; MILLER SRH 333 Welder; (2) LINCOLN 225 AMP Welders; LINCOLN Torpedo Welder; LINCOLN Bullet Welder; MILLER 300 AMP Portable Welder, trailer type, s/n 71567616; Trailer with Welder, (part only); (3) LINCOLN Idealarc 250; LINCOLN Idealarc 250 Welding Machine; MILLER SRH333 375 AMP; P&H T1295 Welder.

—And Other Welders—

### SHOP POWER TOOLS

BLACK & DECKER Magnetic Base Drill; BLACK & DECKER Reciprocating Saw; AEG 3/8" Hammer Drills; (2) MILWAUKEE Reciprocating Saws; BLACK & DECKER Screw Gun; AEG 3/8" Drills; CRAFTSMAN Vibrator Sander; MILWAUKEE Offset Grinders; ROCKWELL Portable Grinders; SKIL 12 Ga. Shears; BLACK & DECKER Shear; BLACK & DECKER Portable Grinder; (3) AEC Offset Grinder; MOTABO Offset Grinder; AEC 3/8" Drill; (2) BLACK & DECKER 1/2" Drills; Electric Solder Guns; PORTER-CABLE Hand Hack Saws; V-A Tap and Die Set; DURO-DYNE Pin Spotter; DUCTMATE Repeat Nailer; 36" Aluminum Pipe Wrench; Floor Standing 6" Vice; Lot of Assorted Extension Cords; WD Chain Come Along; Assortment of Ridgid Pipe Tools; Large Assortment of Miscellaneous Hand Tools; HILTI TE14 Fastener Guns; Hydraulic Port-A-Power; Various Band Saws; RIDGID 535 Power Vice, with steel table; (2) RIDGID 300 Portable Power Vises; STIHL Masonry Saw; (2) Sets of Cutting Torches; Clipper Portable Core Drill; Fire Extinguishers; Assortment of Hand and Electric Chain Hoists; Assortment of Scaffolding; Assortment of Fiberglass, Aluminum and Wood Ladders; (20) Aluminum Picks of Various Lengths.

### REMAINING INVENTORY OF STOCK

Racks Containing Large Assortments of Stainless Steel; Flat; Angle; Aluminum; Sheets of Steel and Aluminum Stock; Galvanized Duct Steel; Slip Bar and Angle Stock; Assorted Duct Work and Parts; Paints and Sealants; Nuts; Bolts and Nails; Assortment of Fittings; Pipe and other Related Items.

### AUCTION NO. 2

Beginning at 5:00 P.M. • Located at the Shady Lane Road  
Main Office and Warehouse Facilities

#### OFFICE FURNITURE & EQUIPMENT

BURROUGHS Office Computer System Consisting of (4) Terminals and Keyboards; PANASONIC FP1510 Copier; SHARP SF7350 Copier; SHARP UX140 FAX Machine; PANAFAX 250 FAX Machine; ROYAL 410 Typewriter; MOTOROLA Two-Way Radio Systems; FREEDOM PHONE Phone System; ROYAL III Typewriter System; ROYAL 410 Typewriter; METEOR II Typewriter; MOSLER Fire Proof Safe; Office Desks and Chairs; File Cabinets; Computer Table; Water Cooler; Drawing Tables, w/chairs; Blueprint Files and Holders; GENERAL ELECTRIC Refrigerators; GENERAL ELECTRIC Microwave; Cleaning Equipment and Many Office Supplies not Listed from These Well Equipped Offices.

#### LARGE ASSORTMENT OF FITTINGS AND OTHER MATERIALS AND SUPPLIES

Stainless and Cast Fittings; Fire System Pipe Fittings; Copper and Brass Fittings; Brass Valves; Galvanized Fittings; Gate Valves; PVC Schedule 40 Fittings; Iron Pipe Fittings, up to 16" dia.; Cast Sewer Pipe, up to 4" dia.; PVC Pipe, up to 10" dia.; Copper, Galvanized, Plastic and Black Pipe; Water and Air Hose; Chrome Pipe Trim and Tubes; Clamps and Hangers; Flex Joints; Insulation; Bathroom Fixtures; Heaters; Sprinkler Heads; Circulator Pumps; Lots of Bolts, Nuts, Washers and Other Miscellaneous Hardware.

Terms Include Cash Or Approved  
Check With Positive Identification  
Required For Registration. Not  
Responsible For Accidents. Food  
Available On Site (s).



J.G.  
**Cochran**



AUCTIONEERS & ASSOCIATES LTD.

Professional Construction & Industrial Equipment Auctioneers

7704 Mapleville Rd., P.O. Box 222, Boonsboro, MD 21713-0222

(301) 739-0538 • TOLL FREE (MD) 1-800-310-2844 • FAX (301) 432-2844

With Offices in Boonsboro and Hagerstown, Maryland

Roger Schlossberg  
Counsel for Secured Creditor

SCHLOSSBERG  
& ASSOCIATES

ATTORNEYS AT LAW

134 West Washington Street

P.O. Box 4227

Hagerstown, Maryland 21741-4227

(301) 791-9410

Fax (301) 791-4302

