

**Pa. Purebred Dairy Cattle Association  
1994 Judging School**  
(Deadline for tickets is July 5)

NAME \_\_\_\_\_

ADDRESS \_\_\_\_\_ PHONE \_\_\_\_\_

Cost is \$22 per person  
SEND YOUR FORM WITH CHECKS PAYABLE TO:  
Pa. PDCA  
839 Benner Pike  
State College PA 16801

**Qualifying Judging  
School Set For July 13**

STATE COLLEGE (Centre Co.) — Those who would like to qualify as a Pennsylvania Purebred Dairy Cattle Association-approved dairy cattle judge should attend the organization's annual judging school, set for July 13 in Juniata and Mifflin counties.

Those wishing to participate should complete an application form and send it to the PDCA, in State College, by July 5.

The school official is to be James Burdette, a Holstein breeder

and dairyman in Mercersburg. Participants are to have an opportunity to judge Holstein and Ayrshire cattle during the school. The exact locations of the judging school sites have not been released.

Those who place well at the judging school have a chance to have their names placed on the official PDCA Approved Judges list, which is sent to county extension offices and is available for local fair boards for use in locating qualified judges.

The school is not limited to Pennsylvania residents. Residents of Maryland, New Jersey, Delaware and New York are also invited to attend the one-day school, and can also qualify for inclusion on the list of approved judges.

The cost of the school is \$22, and that covers the cost of the school and lunch.

Checks should be made out to the Pa. PDCA. Mail forms to Ken Rancy, PDCA secretary, 839 Benner Pike, State College, Pa., 16801.

For more information, call (814) 234-0364.

**Corn Club Contest**

STATE COLLEGE (Centre Co.) — Pennsylvania corn producers have the opportunity to participate this year in the Pennsylvania Five Acre Corn Club.

The Corn Club is sponsored by Penn State and the Master Corn Growers Association. The club gives producers an opportunity to compare production practices, yields, and production costs with other corn growers.

If you grow corn and are interested in improving your system, the corn club is for you. To enroll in the club, contact your local extension office for the necessary forms and regulations.

To enroll, you must be 18 or older and have a production field that is five acres or more or strips in the same variety totaling five acres or more. You must also have had a soil test in the last five years.

There are four grain classes: 1. Shelled corn harvest; 2. Ear corn harvest; 3. Shelled corn-3 acre harvest sample; and 4. Ear corn-machine harvest sample.

For the 3 acre sample, the yield check must be at least three acres and include round trips through the whole field.

Club members will receive a complete report of yields and production practices for all members enrolled statewide plus a detailed report of the actual costs.

**TRI COUNTY**

Confinement Systems, Inc.

**SWINE CONFINEMENT  
EQUIPMENT and FACILITIES LEADER**



**PIG SAVER "DUTCH CRATE"**

Developed through testing in our research farms the goal was to develop a crate that nearly eliminates crushing, due to lay ons, unmatched durability and be easy to work around. All this has been achieved by a unique gravity fliprail that forces sows to lie down slowly and using stainless steel for rear doors and legs, proven horizontal and solid steel rod construction. All this at a reasonable cost. Crate also can be installed on an angle.

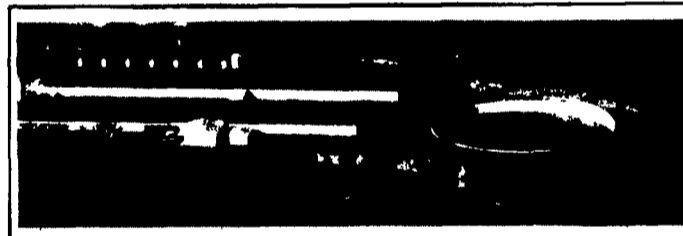


300 Sow Farrow - Feeder Pig Unit

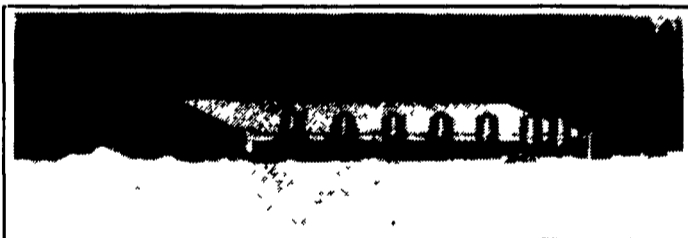


**CONFINEMENT STALLS**

Developed in our R&D farm. Our goals were convenience, safety and durability. The low back and flat top rails are easy to reach over with no sharp edges. Stainless steel rear legs and front feet along with solid steel horizontal rods through punched uprights provide the strongest, most durable stall ever produced by Tri-County (21"-24" O.C. x86")



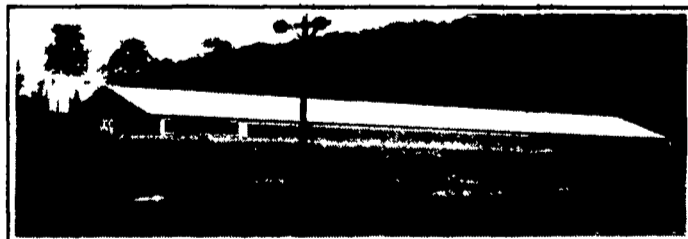
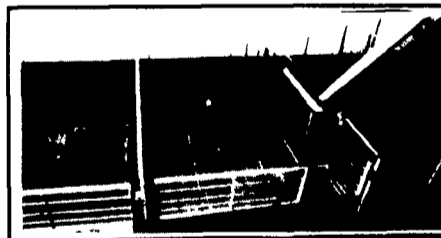
1200 Sow Farrow-Feeder Pig Unit



2800 HP Offsite Nursery (7 Rooms)  
(Pull Plug, Preferred Ceiling Ventilated)

**NURSERY PENNING**

Nursery penning has been improved by the use of an optional solid stainless steel panel on the front gates which keeps walkways clean. Stainless steel feet on penning eliminate corrosion where penning attaches to the floor. Stainless steel drinker pipes & mounting brackets also increase durability.



2000 Head Finisher (2 Rooms)  
(Deep Pit, Tunnel Ventilated)

**FINISHING PENNING**

Standard stainless steel feet and fasteners offer improved durability over other similar types of penning. Loop and flapper latch arrangement eliminates the use of drop pins. Stainless steel fence line feeders provide excellent durability and a minimum of waste.



**ANIMAL HOUSING EXPO**



July 12-13, 1994  
Lebanon Fairgrounds  
Lebanon, Pa.

A show for Northeast livestock,  
dairy and poultry producers

PENNSTATE



College of Agricultural Sciences  
Cooperative Extension

Let Our Experienced Staff Assist In Planning A Successful Facility For You

**TRI-COUNTY**

CONFINEMENT SYSTEMS INC.

608 E. Evergreen Rd., Lebanon, PA 17042

Ph. 717-274-3488

HOURS  
Mon.-Fri.  
7:00 to 4:30;  
Sat.  
8:00 to 12:00

