

# FOCUS



Dixie L. Barris, Membership Development,  
 Call 1-800-1411-7137 for information.  
 Pennsylvania Dairy Herd Improvement Association  
 DHIA Service Center, Orchard Road, University Park, PA 16802

## How Does Your Herd Compare?

STATE COLLEGE (Centre Co.) — These data are calculated using information pulled from Pennsylvania DHIA's mainframe computer each week. It is a one-week summary representing approximately one-fourth of the herds on test, as they are tested monthly.

These data are valuable from a business management standpoint and can be used for comparing your operations to the averages from about one-fourth of the herds across the state.

DHIA Averages for all herds processed between 5/29/94 and 6/05/94

|                              |        |
|------------------------------|--------|
| Number of Herds Processed    | 808    |
| Number of Cows Processed     | 47,871 |
| Number of Cows Per Herd      | 59.2   |
| Milk Per Cow (Lbs)           | 18,512 |
| %-Fat                        | 3.69   |
| Fat Per Cow (Lbs)            | 683    |
| %-Protein                    | 3.20   |
| Protein Per Cow (Lbs)        | 592    |
| Average Days in Milk Per Cow | 318    |
| *Value for CWT Milk(\$)      | 13.26  |
| *Value for CWT Grain(\$)     | 8.22   |

|                                       |         |
|---------------------------------------|---------|
| *Value for CWT Hay(\$)                | 4.29    |
| *Value for CWT Silage(\$)             | 1.54    |
| *Value for Pasture Per Day(\$)        | .28     |
| *Value for Milk Per Cow Per Year(\$)  | 2,455   |
| *Feed Consumed Per Cow Per Year(Lbs)  |         |
| A: Grain                              | 6,939   |
| B: Hay                                | 2,221   |
| C: Silage                             | 14,990  |
| D: Day Pasture                        | 58      |
| *Feed Cost Per Cow Per Year(\$)       |         |
| A: Grain                              | 570     |
| B: Hay                                | 95      |
| C: Silage                             | 231     |
| D: Pasture                            | 16      |
| *Total Feed Cost Per Cow Per Year(\$) | 913     |
| *Income Over Feed Costs Per Year(\$)  | 1,541   |
| *Grain to Milk Ratio                  | 1:2.6   |
| *Feed Cost Per CWT Milk(\$)           | 4.94    |
| Avg Level For 741 SCC Herds           | 349,742 |

\*Member-generated figures

## Average Farm Feed Costs For Handy Reference

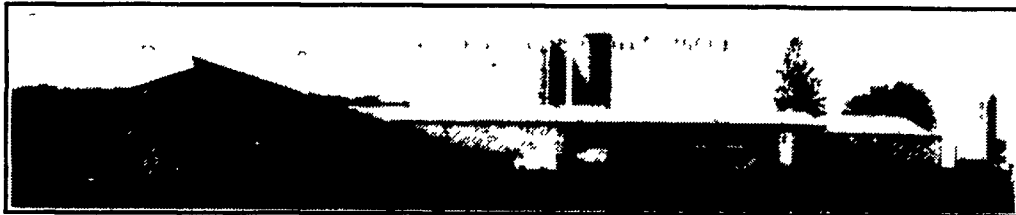
To help farmers across the state to have handy reference of commodity input costs in their feeding operations for DHIA record sheets or to develop livestock feed cost data, here's this week's average costs of various ingredients as compiled from regional reports across the state of Pennsylvania. Remember these are averages so you will need to adjust your figures up or down according to your location and the quality of your crop.

- Corn, No. 2y - 3.06 bu. 5.47 cwt.
- Wheat, No. 2 - 3.35 bu. 5.60 cwt.
- Barley, No. 3 - 2.23 bu. 4.76 cwt.
- Oats, No. 2 - 1.65 bu. 5.13 cwt.
- Soybeans, No. 1 - 6.77 bu. 11.30 cwt.
- Ear Corn 83.34 ton 4.17 cwt.
- Alfalfa Hay - 98.00 ton 4.9 cwt.
- Mixed Hay - 102.25 ton 5.11 cwt.
- Timothy Hay - 105.50 ton 5.28 cwt.

THANKS, DAIRY FARMERS

# KING CONSTRUCTION CO.

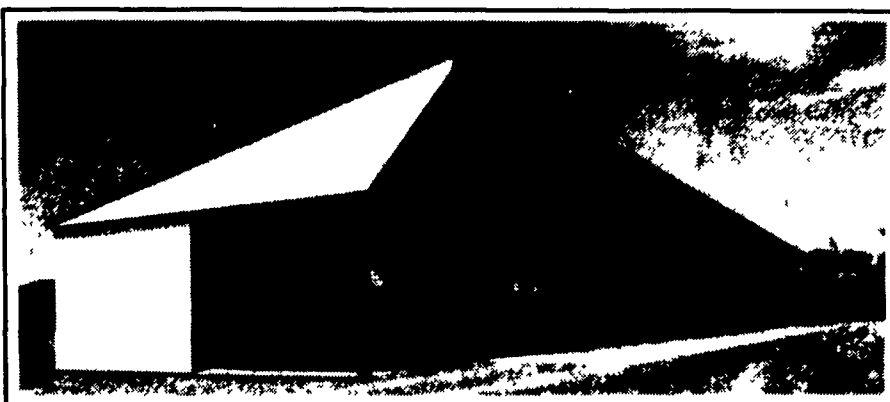
Specializing In Free- Stall Barns, Milking Facilities and Heifer Barns



44 X 200 3-Row Slatted Free Stall Barn & Milking Center



Westfalia Double 5 Auto Tandem with Pre & Post Dip



32' X 180' Virginia Style Heifer Barn Built In Myerstown

See Us At The... ANIMAL HOUSING EXPO



PENNSTATE College of Agricultural Sciences Cooperative Extension

A Show for Northeast livestock, dairy and poultry producers

July 12-13, 1993 Lebanon Fairground Lebanon, Pa.

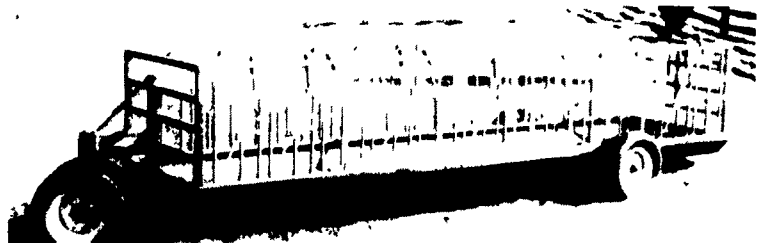
# KING CONSTRUCTION CO.

601 OVERLY GROVE RD., NEW HOLLAND, PA 17557  
 (717)354-4740 • PHIL VAN LIEU (HOME): (717) 259-9077



## FEEDER WAGON WITH HEADLOCKS

Featuring 24 Zimmerman adjustable headlocks for animals 10 months and older. Coated with Baked-On Top-Grade Polyester TGIC Powder Mounted on 5'x20' trough with adjustable tongue



- FEATURES: FARMCO FEEDER WAGON**
- \* 15" implement wheel (6 bolt)
  - \* 2 jacks on front corners for added stability

- FEATURES: ZIMMERMAN HEADLOCKS**
- \* Spring loaded neck bar for easy removal and adjustment
  - \* Individual lock on each yoke for retaining individual animals

## LAPP'S BARN EQUIPMENT



5935 OLD PHILADELPHIA PIKE, GAP, PA 17527

PHONE: 717-442-8134

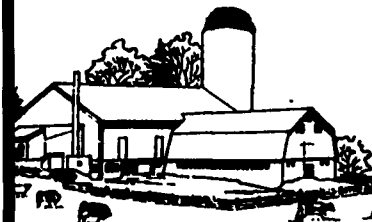
WE SERVICE WHAT WE SELL — Radio Dispatched Trucks —



## WHITWASHING with ADVANTAGE FARM WHITE

- DRIES WHITE • NO WET FLOORS
- IS COMPATIBLE WITH DISINFECTANT AND FLY SPRAYS
- DOES NOT RUB OFF EASILY
- WASHES OFF WINDOWS & PIPELINES EASILY

## BARN CLEANING SERVICE AVAILABLE WITH COMPRESSED AIR



To have your barn cleaned with air it will clean off dust, cob webs & lots of the old lime. This will keep your barn looking cleaner & whiter longer.

CALL US ABOUT ON THE FARM FLY CONTROL

Serving Southeastern Pa. And More

## BEITZEL'S SPRAYING

Witmer, PA 17585 717-392-7227 or

Toll Free 1-800-727-7228 7:00 AM to 5:00 PM

CERTIFIED COMMERCIAL APPLICATORS LICENSED 32 Years Experience INSURED

5 Trucks For Air Cleaning And Whitewashing RADIO DISPATCHED TRUCKS

Barn Spraying Is Our Business, not a sideline. Spraying Since 1961