

Winco, Fidelity & Katolight Alternators, Automatic Generators, Diesel - LP Gas. Repair service on all alternators.

Call before you buy



**WALLIS GENERATORS**

Carbondale, PA

717-282-2342 1-800-231-2968

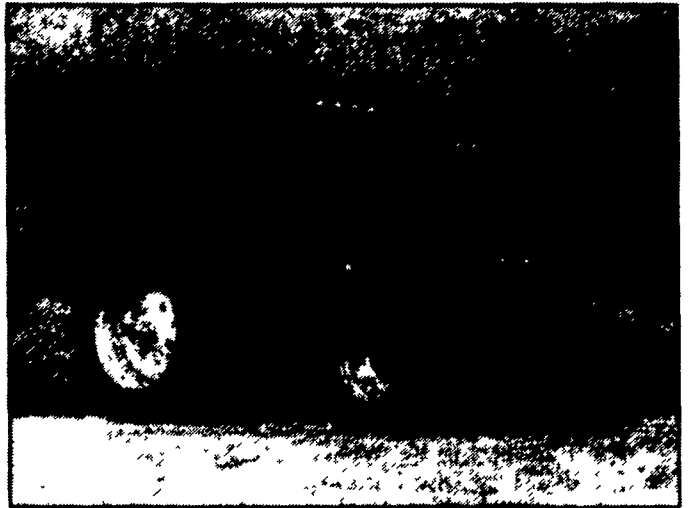
Take Exit 20B  
Off Of 83, 5 1/2 Mi. West  
To Belmont Farm.



**JD 4040**  
90 HP, Good Rubber, Rebuilt Engine, Ready To Work  
**\$14,000**  
410-833-9091

**For The Way You Farm Today**

**Fingertip Powershift Control, Improved Field Visibility and The Most Comfortable Cab Ever**



**Model 9650**  
**147 PTO HP (109.7 kW)**

With their new 18x9 speed full powershift transmissions that electronically control the engagement of massive gears with just the tap of a hand... their cab-forward design that permits a clear, unobstructed view of the field in all directions... and their roomy, comfortable cabs, that feature a unique swivel, air-ride seat and an exclusive seat-mounted control console, the new 9600 Series tractors are clearly ahead of the time.

Every component — from the sleek, sloping hood, to the rugged, cast-iron mainframe to the world-proven air-cooled diesel engines, that require less maintenance — has been designed to match the way you farm today. The result is greater comfort, better performance and improved productivity.

Compare the features and specifications for yourself. Better yet, stop by your AGCO Allis dealer soon and try out one of the 9600 models for yourself. You have to drive it to believe it.

**LAWN & GARDEN**



**OLIVER TRACTOR PARTS**  
**NEW or USED**

**We Are Your Better Source For Oliver Tractor Parts**

**NOW IN STOCK 125 OLIVER TRACTORS DISMANTLED**  
with The Parts, Cleaned, Inspected, And Ready To Ship The Same Day You Order

**Try Us - We Can Get You Going**

**NOW IN STOCK**

- 10 - Completely Rebuilt OVER/UNDER Transmissions for 1650, 1655, 1750, 1755, 1850, 1855, 1950T, 1955, 2255
- 8 - Completely Rebuilt HYDRA/POWER Transmissions for 1550, 1555, 1600, 1650, 1800, 1850, 1900, 1950

**STORE HOURS**

Mon. Thru Fri. 8 AM - 5 PM; Sat. 8 AM -12 NOON

\* 717-354-2150 \*

**FARMERSVILLE EQUIPMENT**



142 East Farmersville Road, Ephrata, PA 17522  
Located In Village of Farmersville



**We Have A "LARGE SELECTION" Of Quality 4x4 Compact Diesels w/Loaders**

**For SALE, Rent or Lease!**

For The Best Prices  
Call Now & Ask For  
Chet or Joel



Yanmar 195, 4x4 Diesel  
Only \$3,900<sup>00</sup>



Kubota L4150 4x4,  
50 HP, w/Loader, w/or  
w/o Backhoe

**NEW BACKHOES**

- Woods 650, 6 1/2 ft.
- Woods 750, 7 1/2 ft.
- Bradco 8LD 8 ft.
- Bradco 9MD-2 9 ft.

**NEW LOADERS**

- Dual 145, Fits Kubota B7100
- Dual 155, Fits Kubota 2050
- Dual 165, Fits Kubota L25-2850

**NEW BRUSH CUTTERS**

- Bush Hog 4 ft.
- Bush Hog 5 ft.
- Bush Hog 6 ft.

**NEW FINISH MOWERS**

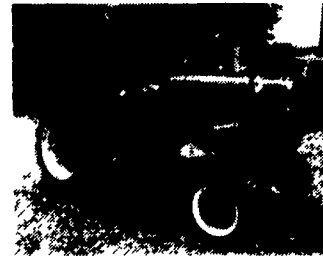
- Landpride 4 wheel 15-60"
- Landpride 4-wheel 25-60"
- Landpride 4-wheel 25-72"
- Rakes
- Silt Seeders

**SEVERAL TLC SPECIALS**

- B6100 w/Blade, 14 HP,  
Kubota Diesel..... \$2,900
- B7100 4x4, 16 HP,  
Kubota Diesel..... \$3,900
- White Field Boss 4x4,  
16 HP, Diesel..... \$4,975

- Ford 335 Ind. w/Loader
- Ford 1510 w/Loader
- Ford 1910 4x4 w/loader, 1300 hrs., good cond.
- Ford 1310 4x4 Bare, 324 hrs., good cond.
- Ford 1110 Hydro 2WD w/Belly Mower 778 Hrs.
- Kioti 17 HP 4x4 - 3 Pth
- Kioti 22 hp w/Loader
- Yanmar 276 w/Loader 4x4, 500 hrs.
- Yanmar 155 w/Blade & Belly Mower 2WD, Ex. Cond.
- Allis Chalmers B w/Belly Mower & Front Blade, Good Cond.
- Cub Cadet 1450 w/Mower, Good Cond.
- MF 1020 4x4, Bare, 3 To Choose From
- JD 305 Rear, 5 Gang Reel Mower
- JD 850 4x4 Bare, 600 Hrs., Ex. Cond.
- JD 1050 2WD w/Loader & Backhoe
- Kubota B7200 HSE, 2WD, Low Hrs.
- Kubota L2650 4x4 w/Loader, 400 Hrs.
- Kubota L295 w/Blade
- Kubota B9200 Hydro 4x4, Bare, Good Cond.
- Kubota L235 2WD w/60" Belly Mower
- Kubota G1900 w/54" Deck, Mower, 785 Hrs., Good Cond.
- Kubota B6100 4x4, Bare, Good Cond.
- Kubota B7200 4x4 Hydro, Bare, 300 Hrs., Ex. Cond.
- Kubota B1750 Hydro, 2WD, w/60" Belly Mower
- New Pro 6 Harley Rock Rakes
- Bobcat Ransome 60" 3 Wheel Mower
- Bush Hog GT42, 8 HP Pull Behind Mower

New 3 pt. Hitch Rear Blades 5', 6', 7' & 8' In Stock



Allis B w/Belly Mower & Front Blade.

**USED REAR FINISH MOWER**

- Woods RM 500
- Woods RM 59
- Woods RM 48
- Belly Mower for IH 255

**USED BACKHOES**

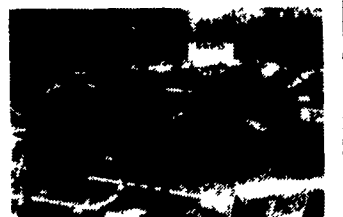
- Kelly 60 for Larger Tractors
- Bradco 9 MD-2 for L3350

**USED CHIPPER SHREDDERS**

- Mighty Mac 5 HP..... \$575
- Mighty Mac 7 HP..... \$775
- Bear Cat 8 HP..... \$1,250

**USED TILLAGE**

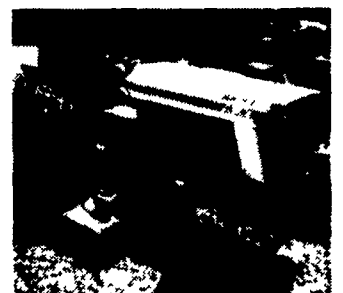
- Landpride 10-58" Tiller
- Landpride 10-42" Tiller 6', 3 Pt. Hitch Disc
- IH 2 pt. Hitch Scraper Blade
- Large Vac



Kubota L345, 36 HP 4x4,  
w/Loader, Needs Some TLC  
Only \$6,500<sup>00</sup>



JD 318 w/50" Belly Mower



Cub Cadet 154 Cub  
Low Boy, Ex. Cond.



JD 330 Diesel  
Ex. Cond., 664 Hrs.

• Financing Available

• Factory Certified Service Available

**Kubota**

Full Service,  
Parts And Rental

**NICARRY EQUIPMENT, INC.**

RD #2, Box 2008, Reading, Pa. 19605  
610-926-2441

Located: 4 Miles North of Reading On Rt. 61  
3 Miles South of Leesport

Reg. Hours: Mon. thru Fri. 8 to 5; Sat. 8 to 3



Massey Ferguson 1020 4x4,  
Turf Or Reg. Tires.

Dig-It 2WD 2 1/8' Backhoe, Ex. Cond.