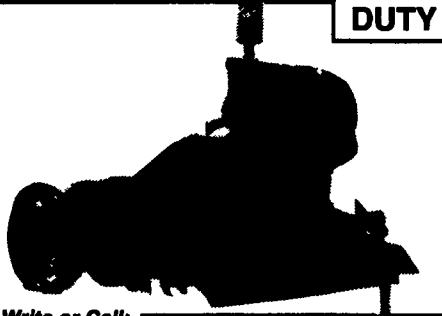


# NEW FLAIL CHOPPER

**HEAVY DUTY**

- 1, 2 and 3 row models
- PTO or engine mounted
- Hydraulic cylinders
- Chain or clevis type hangers

**EARLY ORDER DISCOUNTS**  
In Effect Now Thru August 20, 1994



Write or Call:

**SUMMIT HILL WELDING**  
94 Summit Hill Dr., Strasburg, PA 17579 • 717-687-8266  
8:00-8:15 AM



*Nothing runs like a Deere*

Local Farmer Buy Out All Like New  
Little Grant Elevator 40 w Motor

### TRACTORS

MF 690 1WD, cab heat, air, 2800 hours, very nice	\$16,500
JD 275 <b>SOLD</b> 18 4x34 high low, 2700 hours	Coming In
JD 2755, MFWD, cab, air, 18 4x34 high low, 1390 hours, like new	Coming In
JD 2555, MFWD, cab, air, 16 9x34 high low, 1990 hours, excellent	Coming In
IHC 986 cab, air, 3000 hours, 18 4x38, very nice	Coming In
NH 555 deluxe skid loader, 1990 model, 1800 hours, excellent	Coming In
JD 3020 side console, WF, dual hyd., power shift, one owner, excellent	\$10,900
JD 6200 MFWD w power quad, 6 hours, w warranty	\$33,900
JD 2940	Coming In
JD 4430, cab, heat, air, quad range, excellent	\$17,900
JD 2950, cab, heat, air, very nice, 2500 hours	\$24,300
Farmall 806 w WF & fast hitch	\$4,950
JD 2955 MFWD w CHA, 1800 Hrs, Very Nice	\$32,900
JD 4240, cab & quad, 3400 hours, very nice	\$23,900
JD 2950 MFWD w cab & air, excellent	\$27,900
IHC 966 cab, heat, air, engine & torque rebuilt less than 2 years ago	\$11,500

### HAY & FORAGE EQUIPMENT

NI 484 round baler, excellent	\$6,750
JD 1219 haybine, excellent	\$4,350
JD 336 baler w 30 ejector	\$3,750
JD 61 <b>SOLD</b> w dolly wheel & new teeth	\$2,150
JD 660 rake w rubber teeth & dolly wheel	\$1,750
JD 327 Baler w 30 Ejector	\$5,950
(2) IHC 120 forage wagon w 3rd beater & roof, excellent	\$2,950 Each
NH 28 forage blower	\$1,350
NI 486 Round Baler, excellent	\$7,200 \$8,250
NH 38 Flail Chopper	\$2,950

### COMBINES & HEADS

Gleaner F combine w 13 grain platform	\$5,450
JD 444 corn head, very nice	\$3,950
JD 44 <b>SOLD</b> x26 tires, 1600 hrs, very nice	\$18,900
JD 4440 dsl, 1975 model, 2965 hrs, rotary screen, cab, heat & air, nice	\$9,750
JD 1400 dsl, 1974 model, 2968 hrs, cab, heat & air, good	\$8,250
JD 4400 gas, 1972 model, 2618 hrs, cab & heat	\$6,950
JD 6600 dsl, 1976 model, 2901 hrs, cab, heat & air, rotary screen, very nice	\$14,900

### TILLAGE

JD 210 disc, 12 10, nice	\$2,750
Brillion 9 shank 11 mulch tiller w coulters	\$5,450
JD 110 disc, 12, very nice	\$2,150
White 21 Wing Fold Field Cult, Spike Attach	\$2,450

### PLANTING

JD 7000 4R dry fertilizer w markers & insecticide	\$4,950
JD 7000 6R liquid planter w markers, unit mount, no till	\$5,950
IHC 510 drill, 10 w fert & grass seed	\$2,850
MF 33 drill	\$900
JD 8300 drill, soybean special	\$2,750
JD 450 drill w grass seed, 17x7 5 w double discs & press wheels, like new	\$6,950

### MISCELLANEOUS

Yetter no-till markers for JD 750 no-till drill	\$900
JD 148 loader for 2840-2955, ind valve	\$3,250
NH 680 tandem manure spreader	\$2,150
JD 265 loader w mounts for RC & utility	\$5,950
JD 534 bulldozer blade, 8, excellent	\$3,450

## WINELAND EQUIP. INC.

RD 216, Box 111  
Martinsburg, Pa 17666  
Phone 811-2111

## J & F EQUIPMENT

(717) 859-3283

No Reasonable Offer Refused  
Custom Repairs On All Makes Industrial & Farm Equipment



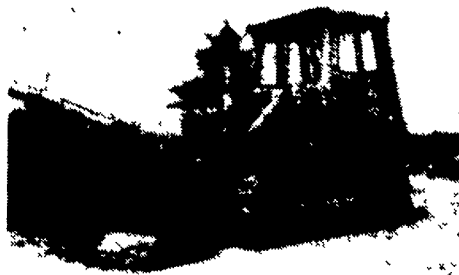
JD 555 Rebuilt Transmission  
\$15,000



'88 Flat Allis FLIOE  
\$22,500

WE ARE BUYERS FOR CONSTRUCTION EQUIPMENT NEEDING REPAIRS

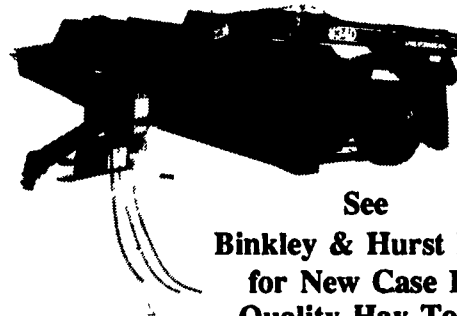
Case 1835B Skid Loader.....	\$7,200
Case 850B Crawler Loader, good cond.....	\$13,500
JD 350 or 450 ripper, good condition.....	\$1,000
JD 350 Crawler Loader, choice of 2.....	\$8,000/ea.
JD 350C Crawler Loader, good condition.....	\$13,000
JD 450C, 6-way blade, rebuilt motor, and trans., like new U/C.....	\$15,500
'84 JD 455D, New Tracks.....	\$18,500
Komatsu D65S Crawler Loader.....	\$10,500
Dresser TD7E 6-Way.....	\$13,500



Cat 955L \$15,500



Gallon Roller \$950

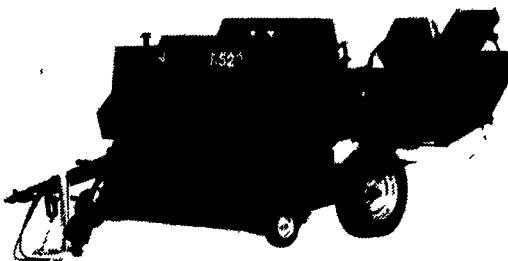


See  
Binkley & Hurst Bros.  
for New Case IH  
Quality Hay Tools  
In Stock



All New Case IH Forage  
Harvester In Stock With  
Metal Detector, Special  
New In Cab Controls On  
Joy stick Lever

**8750 FORAGE HARVESTER**



(1) Case IH Model 8340 9' Mower  
Conditioner w/Oil Bath Drive &  
Auto. Roll Separation Features In  
Case Of Plugging.

- (2) Case IH 8530 Square Baler With  
Thrower, Good Capacity With Up  
To 100 Stroke Per Minute Plunger  
Speed, Inline Model Which  
Eliminates Side Draft  
*Let's Deal Now!*
- (3) 8430 Round Baler, 47" Width x 51"  
Diameter, Hard Core Tight Wrap  
Can Finish Off Bale At 30" Dia.  
If Desired
- (4) Case IH Model 8630 Center Pivot  
Swing Frame Mower Conditioner  
With 12 Foot Cut
- (5) Economy Model 8330 9 Foot Mower  
Conditioner
- (6) Case IH 600 Forage Blowers In Stock!
- (7) Small Round Baler Model 8430 39"  
Wide x 30" to 54" Variable Height  
Hard Core
- (8) Large Mesh Wrap Round Baler Model  
8465 5'x6' With Variable Size Dia.

### The Perfect Match Mesh Wrap



See Binkley & Hurst for a Quality Mesh  
Wrap Baler Today with a Case IH  
Maxxum Tractor to Speed Up Your  
Hay Harvesting Operation Now!

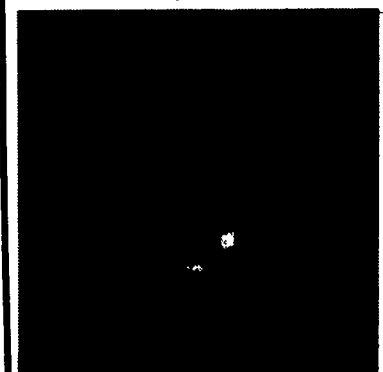


New Minimum-Till 3 Pt.  
Cultivator Set-Up &  
Ready To Work  
On Your Farm!

**WE HAVE ONLY ONE IN STOCK!**

4 Row 36"-40"  
Adjustable Row Spacing  
With Cushion Clamp  
Shanks, Cat II or III  
3 Pt. Hitch

### ALL NEW CASE 1838 46 HP DIESEL UNLOADER JUST ARRIVED!



Stop In Soon  
For Super  
Deal &  
Save \$\$\$ On  
This Lower  
Cost Unit!

## BINKLEY & HURST BROS., INC.

133 Rothsville Station Rd., Lititz, PA 17543

Located 1/4 Mile North of Rothsville

(717) 626-4705 1-800-IT PAYS U

