

**32 MISCELLANEOUS**

Steel Shear, 1/4 x 4, good condition, \$2500 717/354-3105

Surface grinder, J&S, 6"x18" medic table, \$1250 717/354-3105.

Turret Lathe, W/S, 20" swing, w/motor, complete, \$1250 717/354-3105

Electric Stair Glide, very good condition, \$1,000 (610)874-5077

Farm Toys-Collector Series, Show Tractors, Pedal Tractors, Trucks-for sale at all times Visit our large display during business hours Wengers Farm Machinery, Inc., 251 S Race St, Myerstown, PA 717/866-2130

**FISHING TACKLE**  
WANTED Old reels, wooden lures, rods, nets, advertisements 610-660-9995

Unipunch and Stripit, 1 1/2 Wx8"D \$95, 2 1/2 Wx8"D \$200, 2 1/2 Wx8"D \$250, all like new. 717/354-3105

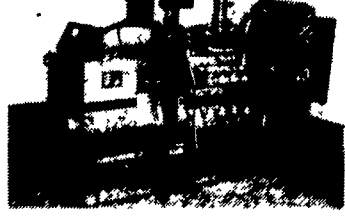
WANT: 30 quart dough mixer and gas bakery oven in good working condition. (717)649-6375.

WANTED Guinea Pigs Over 1Lb., Live for Butchering. Could Use up to 200/Week. (914)737-2810.

WANTED. Original floor, grainery boards, 2" flooring, barn beams, tobacco sheds, siding (717)229-2806 mobile 717/880-4549

WANTED Used tools and machinery Buy, Sell, Trade, Consign or Finder B.J. TOOL & SUPPLY, RT 422W, Myerstown, PA 1-800-772-9845

**POWER SYSTEMS ELECTRIC, INC.**



**SPECIALIZING IN GENERATOR SALES, SERVICE AND RENTALS (717) 933-5617**

- 300 KW Detroit, used
- 100 KW Allis diesel, used
- 75 KW Hercules L-P-G, used
- 55 KW Hercules diesel, used
- 35 KW Hercules diesel, used
- 15 KW Onan L-P-G, used
- 35 KW Winco PTO, new
- 25 KW Winco PTO, new

**32 MISCELLANEOUS**

Signode Banding Machine, auto 1/2" steel banding, \$3250. 717/354-3105.

**33 RECREATIONAL VEHICLES**

1973 Terry 18' self-contained camper trailer, \$1,500. (301)898-7426.

**35 TRUCKS & TRAILERS**

1970 Mack R600, 237, 5 speed w/wetline, fair condition, \$3000, 1977 Mack R600, 300, 5 speed, long WB, working everyday, \$8900, 1986 Mack single axle, 300, 5 speed, air ride, excellent condition, \$17,500, 1976 Freuhauf flatbed, 44', fair condition, \$1400; 26' Freuhauf dump trailer, \$3000. 717-396-9718 Lanco

1972 C-60 Chevy Truck, Cab and Chassis, Suited for Box 10' or Larger, Gas, 366V8, GVW 21,000, Asking \$1500 (717)745-7573.

1972 Ford F-700, 14' Grain Body, Twin Telescope Hoist, PS, 5+2, Very Good. \$2900. (410)756-6992.

1978 Landall model 317 hyd, rollback trailer w/o riggers, winch, drop wells, \$17,500, Marman tandem axle trailer/tractor, cab over, road ranger transmission, recent 350 Cummins wetline, Transcraft 42' single drop trailer, air ride. All above vehicles inspected and in use. EVERGREEN TRACTOR 7 1 7 - 2 7 2 - 4 6 4 1, 7 1 7 - 8 6 6 - 2 5 8 5, 1-800-441-4450

1979 Dodge D200 318V8 Auto, PB, Fully Enclosed Hightop Utility Body, Many New Parts and Paint \$2300 OBO (610)692-4191

1979 Int Paystar 5000 Triaxle Dump 13Spd. Rebuilt 430HP Detroit Rebuilt 19 1/2' Alum Bed, Good Rubber, 18Front, 44Rears \$12000 00 (717)367-0338.

1979 R Model Tandem Axle Mack Tractor, 300 Engine, 60 Transmission, 11R24 5 Rubber w/ Wetline \$7500. (215)383-7042

1986 Chevrolet pickup, C30, 9000 GVW, diesel, AT, good work truck \$2500. Lancaster 717-295-1329 or in PA 1-800-636-3838

1986 Ford F250 extended cab 4x4, 4-sp w/Eby 9' cattle box, 53,000 miles, new paint, new tires Will sell as one or split. \$8500 complete 717/278-3924 Susquehanna Co

1987 International diesel, Eby cattle body, very good condition. No Sunday sales 717-933-8044 leave message

1990 357 Peterbilt Tandem w/3176 Cat, 8 LL trans. w/3800 gal. Brenner milktank, farm pickup; 1989 S/1954 Inter single axle w/ airtag 466DT, 5sp w/2sp rear, w/3200 gal Brenner milktank. 301/895-5566.

1991 Ford F450 super duty 460 EFI 5-sp., PS, PB, 16,000 GVW, 12,000 miles with 12' insulated van body, like new 610/756-6539

1992 F350, 4x4 truck, 5 speed, 30K on new engine; 1993 Bison gooseneck, 2 beavertail flat trailer; 1982 Mortz 6x22 stock trailer. Will sell separate or together. \$22,000. 717-483-6308.

(2) 6x6 2 1/2 ton army trucks, 1 gas, 1 multi-fuel diesel, very good condition, both 5 speed low high range w/5th wheel. Diesel \$2000 OBO, gas \$1500 OBO. 609/299-3540.

'90 Dodge LE 250, 8 passenger van, 318 auto, PB, PS, PW, PDL, cruise, tilt, dual air & heat, privacy glass, 21,000 original miles, like new, \$13,995. 717-733-2873

'93 Chevy Beauville, 6 2 liter diesel, 8 passenger, auto, PB, PS, PW, PDL, cruise, tilt, dual air & heat, towing package, 16,000 miles w/balance of factory warranty, like new. 717-733-2873

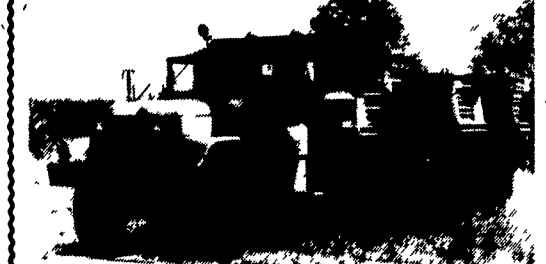
'93 Ford Club Wagon E350, 15 passenger, 351 EFI, auto, PB, PS, PW, PDL, cruise, tilt, dual air & heat, privacy glass, 27,000 miles, blue, excellent condition, \$17,900. 717-733-2873

1970 Chevy 70 series, 6V 53 Detroit, 10' dump, \$3000 610-286-5488.

1970 Dodge D250, 3/4 ton club cab, 318 EFI, auto, PB, PS, AM-FM, 7,400 GVW, 36,000 miles, new radials, silver & white, excellent condition, \$11,995 717-733-2873

Int. 1972 Cattle Truck, 12' aluminum body, new engine, \$3250 OBO; Chev 1975 C60 steel bed, new engine, \$2200 OBO 410/833-1847

Mack 1981 R Model, 300hp, 5-sp., PS, good tires, inspected, \$7800 Neg. 717/656-9544.



**INTERNATIONAL 6x6 BRIDGE TRANSPORTING STAKE BODY TRUCKS**

Front Winch, PS, Air Brake, 1400/20 Tires, 21 ft. Bed with removable steel racks. Continental 6 cyl engine. LIKE NEW 600-2,500 Miles. Excellent for off road heavy duty cargo transporting with their all wheel drive and ability to climb a maximum grade of 70 degrees. Double Frame. A must for every farmer \$10,500

**(814) 834-1018 St. Marys, Pa.**



1989 International S1954 with 28' Steel Flat Bed, DT466 Diesel 210 HP. 7 Speed, P.S. Air Brakes, 35,000 GVW.

**\$19,500**

**Call 1-800-345-2829 Curry Supply Co. Curryville, PA**

- 1993 Chevy Astro Ext, CS, 7 Pass., V6, AT, Loaded, Black, 52,200 Mi.....\$13,600
- 1992 Mercury Grand Marquis LS, V8, AT, Loaded, Blue, 68,700 Mi.....\$11,900
- 1991 Chevy Caprice SW, 9 Pass, V8, AT, AC, CR, PDL, AM FM, Maroon, 60,100 Mi.....\$9,800
- 1991 Toyota Camry, 4 Cyl., 5 Spd., AC, AM FM Cass., Black, 51,000 Mi.....\$8,800
- 1991 Chevy Lumina Euro, 4 Dr., V6, AT, AC, CR Tilt, AM FM Cass., Black, 57,400 Mi.....\$8,800
- 1990 Mercury Cougar LS, V6, AT, Loaded, Black, 67,200 Mi.....\$7,900
- 1989 Ford F-150 XLT Lariat 4 X 4, V8, 4 Spd., Loaded, Black/Red, 116,900 Mi.....\$7,900
- 1989 Pontiac Grand Am LE, 2 Dr., Quad 4 5 Spd., Loaded, Maroon, 66,900 Mi.....\$5,400
- 1988 Plymouth Sundance, 4 Dr., 4 Cyl., AT, AC, AM FM, Blue, 70,200 Mi.....\$3,900
- 1988 GMC 2500 Sierra SLE Ext. Cab, P.U. 4 X 4, V8, AT, AC, AM FM Cass., Red/Silver, 60,500 Mi.....\$12,900
- 1987 Dodge Power Ram 100 P.U. 4 X 4, V8, AT, AM FM, Black, 63,600 Mi.....\$6,800

**Brubaker's Auto Sales Myerstown, PA 717-866-5237**

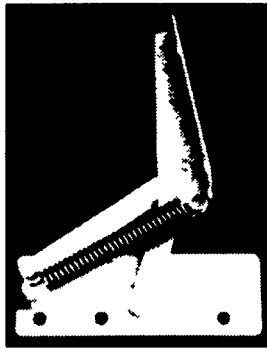
**WANTED WANTED WANTED**

Old Pictorial Cigar Box Labels & Sample Label Books. Check your attics, garages, shops, etc. **TOP PRICES PAID** Will buy small or large amounts. Send picture or sample and asking price.

**Cigar Labels**

RR 1, Box 593 Wrightsville, PA 17368

**FINALLY! THE BLANKET CHEST HINGE EVERYONE'S BEEN WAITING FOR...**



Hinge Features:  
Spring Loaded Over Center Stay Open  
Soft Close Beyond Center

\$8.95/set

(1 set per chest) in PA add 6% sales tax. Add \$3.00 for S & H for less than 5 sets. 5 or more sets, prepaid.

Call for Quantity Discounts. Dealer Inquiries Invited.

Also Available: Drop Leaf Hinges, Square Drive Wood Screws, Solid Wood Glued-Up Blanks, Chair Seats, Table Tops, Millwork, etc.

**Zimmerman Wood Craft Company**

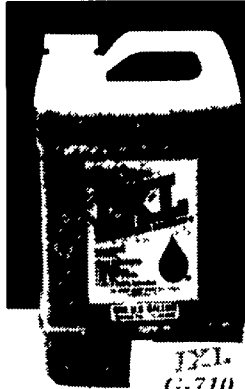
227 Wood Corner Road • Lititz, PA 17543  
Phone 717/ 733-6698 • Fax 717/ 733-0031

**1-800-495-5823**

Take Advantage Of The

**Friction Eliminator**

Preventative Maintenance Motor Care Products! Use IXL In:



**COMPLETE PRODUCT LINE:**

- IXL Friction Eliminator
- G-10 Calcium Complex Grease
- XL 240 Penetrating Oil Spray
- OGC 600 Open Gear & Chain Lube
- A 680 Cutting & Tapping Formula
- Diesel Fuel Conditioner Concentrate
- Super Gas Conditioner Concentrate

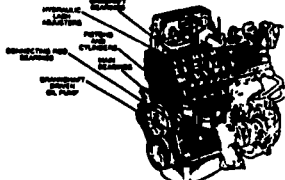
- Gas & Diesel Engines
- Motors
- Gear Boxes
- Transfer Cases
- Steering Units
- Universal & CV Joints
- Hydraulic Systems
- Bearings, All Types
- Conveyor Systems
- A/C & Refrigeration Systems
- Transmissions
- Wheel Bearings
- Compressors



**IXL Technology Is New, Different & Better**

IXL is the result of years of research and development in Chemistry and Metallurgy. IXL is a non-particulate chemical that goes beyond the typical hydrodynamic principle on which most lubricants are based. IXL does NOT contain graphite, moly or TFE. It is nonflammable, biodegradable and nontoxic. Unique molecular bonding increases the density of the metal surface making it harder and smoother, as OPPOSED to coating the surface with particulates (e.g. PTFE) suspended in a high-viscosity oil.

**CRITICAL LUBRICATION POINTS WHERE METAL-TO-METAL CONTACT CAN OCCUR**



**ENGINE:**

IXL effectively eliminates Friction - giving increased gas mileage. Protects during cold starts when other motor oils are ineffective. Increases the drive-train life of your car - by dramatically reducing wear and tear on the moving components. Environmentally friendly.

**AUTOMATIC TRANSMISSION:**

IXL protects seals. Reduces Friction in bearings and gears resulting in extended transmission life.

**MANUAL TRANSMISSION:**

IXL reduces Friction between gears and synchronizers resulting in smoother operating, better shifting with overall protection.

**POWER STEERING:**

IXL reduces Friction in pump, gearbox and rack. Resulting in smoother operating with less energy expired. Also protects rack and pinion from developing hard spots.

**REAR END & DIFFERENTIAL:**

By introducing IXL to the Rear End and Differential you protect the ring and pinion plus all gears and bearings that normally fail due to wear. One also has the addition of fuel economy because less Friction means greater gas mileage.

**AIR-CONDITIONING:**

By adding 1 ounce of IXL to the air-conditioning unit results in smoother operating, less energy expired and eliminates noise and chattering.

Satisfaction guaranteed or your money back.

**10% Off**

**IXL Promotional Offer**

Excel Products Company  
227 Wood Corner Road • Lititz, PA 17543  
Phone: 717/733-6698 • 800-IXL-LUBE

**10% Off w/Coupon**

Expires 6/30/94

**10% Off**

**10% Off w/Coupon**