

Top Lancaster DHIA Cows By Protein For May

(Continued from Page C4)

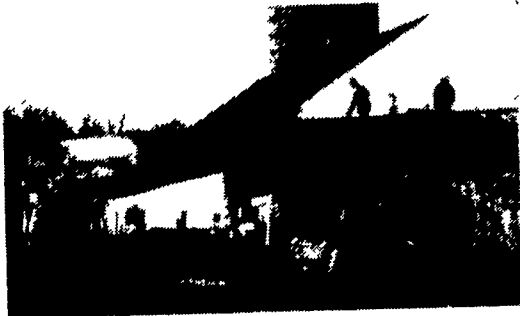
HARVEY W STOLTZFUS 104 D	GR-H	6-8	298	25,442	3.4	857	4.1	1054
JOE & BEULAH SMAVELY LADY	RH	3-6	305	27,475	3.1	853	3.6	992
SHELWAR ACRES CLARA	RH	3-7	292	26,242	3.2	852	3.4	895
BONIES	RH	3-10	305	25,685	3.2	830	4.0	1030
TRACIS	RH	4-4	305	27,518	2.9	797	3.3	917
DONALD B TRIMBLE NARCIU		4-10	305	23,016	3.7	845	4.7	1071
TRITOWN FARM ELLIE	RH	3-10	305	26,864	3.1	838	3.3	891
MATHANEIL D. STOLTZFUS WHITY	GR-H	8-11	305	29,601	2.8	834	2.8	833
LAPP VALLEY FARM RUTHIE	RH	4-6	305	25,058	3.3	834	4.2	1057
DAVID G BYERS 4	RH	5-0	305	26,041	3.2	833	3.3	865
SAMUEL E BEILER PLUM	RH	5-6	305	28,686	2.9	832	3.3	958
TITUS B STONER MAEBEL	RH	7-5	305	26,525	3.1	831	3.8	999
HELVIN ZOOK 304	RH	4-1	305	25,692	3.2	828	4.5	1167
199	RH	8-7	284	23,410	3.3	770	4.3	997
NAHLON E KING CRYSTA	GR-H	3-5	305	26,177	3.1	821	3.6	937

HENRY D SINNEMAN 5014	RH	4-6	277	25,905	3.2	819	3.4	891
DENNIS L MARTIN DOLLY	RH	3-10	305	23,521	3.5	815	3.6	845
ANGIE	RH	3-1	290	23,369	3.5	813	3.6	834
KREIDER'S & WICKLE 92	RH	3-6	305	25,669	3.2	814	3.4	870
BRANDYVALE FARM FANNIE	RH	5-6	305	26,214	3.1	814	3.5	913
GARY L STOLTZFUS 28	GR-H	9-9	305	25,775	3.2	813	3.1	803
CLAY FARM SILVER	RH	4-1	305	24,813	3.3	811	4.0	989
EARL & ANNA MAE REIFF PATTER	GR-H	3-11	305	26,569	3.0	810	3.6	966
MISTI KNOLL FARM 44	RH	4-10	305	26,611	3.0	808	2.5	667
ELMER J KING 390	GR-H	3-4	305	24,202	3.3	805	2.6	626
SPRING LAWN FARM 54	RH	7-7	305	25,529	3.1	804	3.7	936
PHILIP G CROUSE SUSAN	RH	4-8	289	24,482	3.3	804	3.2	781
GOLDEN	RH	3-0	305	22,025	3.6	786	4.0	890
TOM BARTMAN 12	GR-H	3-9	305	24,663	3.3	802	2.7	665
CARL L MARTIN S HEID	RH	5-9	305	25,321	3.2	801	4.0	1021

(Turn to Page C8)

B&B SPRAY PAINTING SANDBLASTING

Quality
That's
Affordable



Spray
Roll
Brush

Specializing In Farm Buildings, Feed Mills - Roofs -
Tanks - Etc., Aerial Ladder Equip.
Stone - Brick - Restoration

Gibbon's Rd. RD #1 Bird-in-Hand, Pa.
Answering Service (717) 354-5561

Pesticide Institute Meetings Offer Certification Credits

HUNTINGDON (Huntingdon Co.) — Private, commercial, and public pesticide applicators have the opportunity to attain pesticide credits at the institute meetings sponsored by the Pennsylvania Nurserymen's Association.

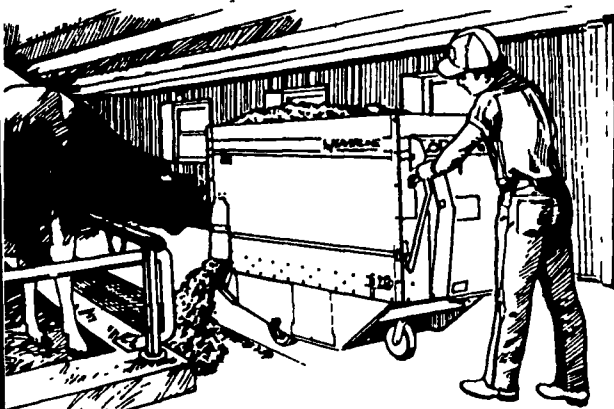
The Central Pennsylvania Pesticide Institute will be held July 13-14 at the Embers Convention Center in Carlisle.

Categories in which credits may be attained include: lawn and turf, ornamental and shade tree, right-

of-way, industrial weeds, aquatic, soil fumigation, swimming pool, wood preservation, forest pest control and interior landscape. Core credits are also available.

Registration forms are available from local cooperative extension offices. Early registrations for discounted rates must be received by the association by July 8. Other institutes will be held in Monroeville (August 18) and Allentown (August 31).

CUT FEEDING TIME WITH WEAVERLINE SILAGE CART



Be Sure To Consider
Weaverline Silage Cart

WHY?

- Feeding is Right At Your Fingertips
- Improves Dairy Feeding

You Will Enjoy Feeding
Cows With The Easy
Quiet & Fast Weaverline
Cart... Many Sizes Available

**NOW 4 SIZES
AVAILABLE**

★ 20% Larger Than The
"Best Seller" Model 430

★ Larger Size For The
Larger Herd

★ Full 36 Bushel Capacity

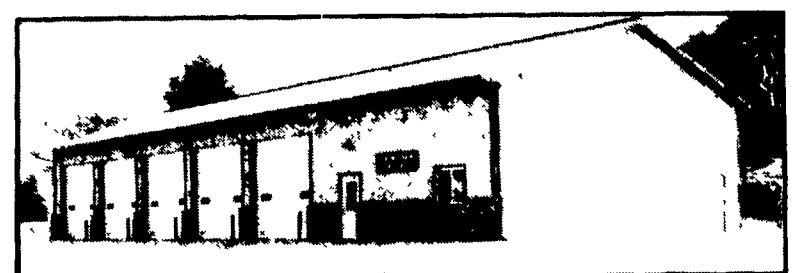
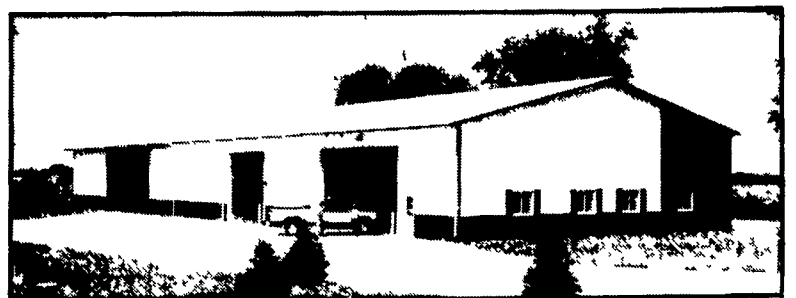
★ Extension Side Kit
Available To Increase The
Capacity On All Models. **420 - 424 - 430 - 436**

**RYDER SUPPLY
CO.**

539 Falling Spring Road
P.O. Box 219
Chambersburg, PA 17201-0219
717-263-9111

MORTON BUILDINGS Since 1903

- Horse Barns
- Riding Arenas
- Garages
- Warehouses
- Offices
- Shops
- Equipment Storage
- Aircraft Hangars



MORTON BUILDINGS, INC.

Excellence — Since 1903

CONTACT:

3368 York Rd.
Gettysburg,
PA 17325
717/624-3331

P.O. Box 126,
Phillipsburg,
NJ 08865
908/454-7900

Call or write today
for more information

1-800-447-7436

Illinois only, call
1-800-426-6686