

Top Crawford DHIA Cows By Protein For May

The top producing cows by protein in Crawford DHIA for May are as follows:

OWNER - COW'S NAME	BREED	AGE	DAYS	MILK	PROT	TEIN	FAT	FAT
KORRELL FARMS								
ASHLEY	RH	5-9	305	31,549	3.0	947	3.5	1097
AVIS	RH	3-7	305	27,768	3.1	870	3.7	1031
CHELOW	GR-H	3-3	305	24,227	3.6	867	4.1	997
BLOSSO	RH	5-9	305	23,913	3.4	806	3.5	826
JAFRA	RH	2-5	273	23,964	3.3	787	3.5	831
BEEPER	RH	7-7	284	23,360	3.3	774	3.7	863
O-DARLAN FARM								
41	RH	4-3	305	31,924	2.9	935	3.5	1118
2	RH	7-10	305	26,806	3.5	926	4.0	1071
64	GR-H	3-3	305	21,572	3.6	770	4.2	912
RYND HOME FARMS								
SARAH	RH	5-4	305	29,395	3.2	927	3.9	1158
BETH	RH	3-6	305	22,637	3.5	799	4.4	1005
RICHARD L BLACK								
ELLEN	RH	5-1	305	26,133	3.4	899	4.8	1255

ALAN & EBONA CUSTEAD

JUPITE	RH	6-8	305	26,807	3.3	891	3.1	844
BRANDY	RH	10-1	305	28,348	3.1	886	2.9	820
BARON	RH	5-9	305	25,352	3.4	874	3.7	945
HANDY	RH	5-6	305	25,545	3.4	863	4.3	1087
FOUND	GR-H	5-5	305	26,830	3.1	822	3.2	871
WIL-AIRE FARM								
CORNY	RH	6-8	305	28,588	3.1	885	3.8	1088
STAMBOPE FARMS								
311	GR-H	5-9	284	27,268	3.1	854	3.3	905
326	GR-H	4-7	305	24,649	3.2	783	3.9	950
JAMES CUSTEAD								
DARLEN	GR-H	6-3	305	25,799	3.2	817	2.9	745
MARY	GR-H	7-1	305	23,058	3.4	775	3.6	824
JEFFREY RANEY								
TIA	RH	3-4	305	20,886	3.7	774	4.0	829
BLACK POND FARMS								
LORAIN	RH	3-8	305	23,541	3.3	773	4.4	1045
HART FARM								
169	RH	3-5	293	23,688	3.3	770	3.2	754



EXCELLENT WEEK FOR FIELDWORK: There were six days suitable for fieldwork. Warmer and drier than normal weather conditions across the state resulted in a great week for fieldwork but for a significant deterioration in soil moisture conditions. Soil moisture was rated short by 51 percent of our respondents, adequate by 48 percent, and surplus by 1 percent. Activities included planting corn and soybeans, transplanting tobacco, making hay, spraying pesticides, hauling manure, and caring for livestock.

CROPS: Last week's weather was ideal for hay making. Farmers made considerable progress on the first alfalfa cutting and 93 percent reported that the quality of hay made was good. A few had started a second alfalfa cutting. Weevil damage was substantial in some fields. Many farmers indicated that rain is needed for a good second cutting. Wheat, barley, and oats generally looked good. The corn condition continued to improve with the warm weather. The corn height averaged 4 inches across the commonwealth.

LIVESTOCK: Pasture condition was reported good. Some farmers reported slow regrowth and short stands because of the dry conditions.

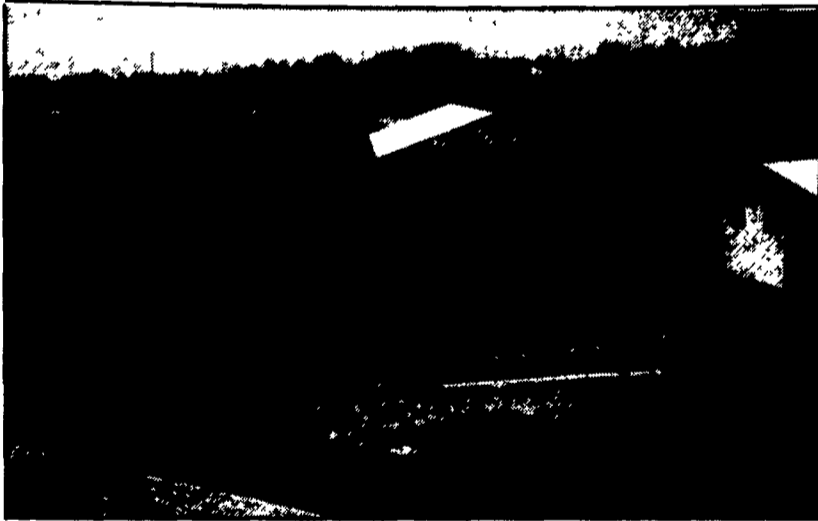
VEGETABLES: Strawberries were ripening well and many growers were preparing for the first picking of the season.



EMHERR GRAIN SYSTEMS SPECIALISTS

PLAN NOW FOR THIS YEARS CROP

• Agricultural • Commercial • Residential



Partial In-Ground Tank Featuring Commercial Chain Link Fence (5' High - SCS approved)

- Retaining Walls • Bunker Silos
- Manure Storage, Etc.

LET OUR EXPERIENCE WORK FOR YOU-ESTABLISHED SINCE 1979!
WE ORIGINATED THE CONCRETE SYSTEM!

Sizes And Layouts To Your Specifications

We Work Hard For Customer Satisfaction!

GROFFDALE CONCRETE WALLS INC.

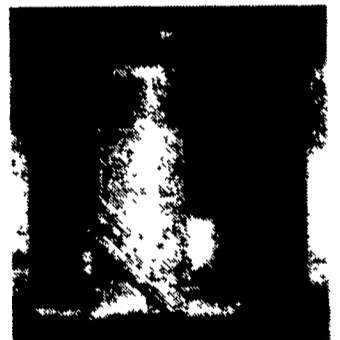
430 Concrete Ave., Leola, PA
717-656-2016

Authorized Dealer For KEYSTONE CONCRETE PRODUCTS

- H-Bunks
- J-Bunks
- Trench Silo Walls
- Hog & Cattle Slats



- TOP DRY GRAIN BINS**
- Dry up to 1000 Bu. Per Hour
 - Doubles As A Storage Bin
 - 540 to 2100 Bushel Batch Capacity



- FARM BIN**
In Bin:
- Stirring Systems
 - Aeration
 - Air Drying



- FEED BINS**
- Rigid Augers 4", 6" & 8"
 - Flex Augers 2", 3", 3 1/2" & 5"



- AUTOMATIC BATCH**
Continuous Flow Grain Dryers

Serving The Industry For Over 30 Years



★ Full Line Parts Dept.
★ Sell, Service & Install ★
Rt. 272 South, Willow Street, PA 17584
Ph: 717-464-3321 or Toll Free 800-732-0053
Store Hours: Mon.-Sat. 7:30 AM to 8:00 PM