

DHI-Provo Develops

(Continued from Page A22)

The feeding program for the milking herd may have to be revised.

The udder health portion of the report indicates that there is no serious problem with the somatic cell count level in the herd. The percent of cows in the low somatic cell count group is higher than the state or regional average.

In evaluating the reproductive performance, it appears the cows are being bred early, however, the percent first service pregnancy rate is low and the service per

conception is higher than the state and regional average.

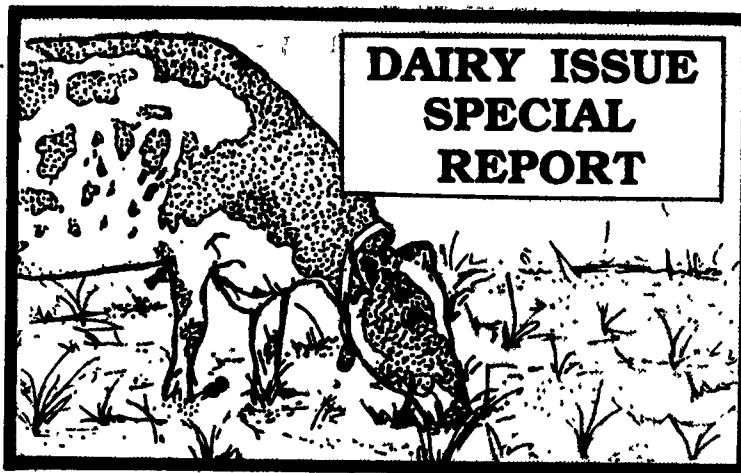
Also, the last calving interval was 12.9 months for all cows in the herd and the next calving interval for all pregnant cows in the herd is projected to be 13.6 months. Therefore, it appears that a breeding problem has occurred in the herd and some changes may be necessary to correct the situation.

The genetic information for the herd shows that the Predicted Transmitting Ability (PTA) for pounds of milk is low in the first

lactation cows when compared to the state and regional average. The PTA for milk for the sires of the cows appears to be satisfactory. The service sires that are being selected appear to be below the state and regional average.

Since there is reasonably priced semen from high quality bulls for production and physical type traits, this average could easily be raised.

The Personal Herd Profile can be a valuable management tool for all dairy farmers. This personalized report, customized and designed by the dairy producer, can be used to set realistic goals; to evaluate the herd; and to identify the problems that need to be solved by the management team.



HERD NO. 00-93-0238		PP PERSONAL HERD PROFILE		DHI-PROVO		Set # Page SET# 2		Form Date 10-29-93					
HERD	DESCRIPTION	COUNTY	STATE	REGION	HERD GOALS	HERD DATA	COF OF PCTL VAR	STD DEV DEV PCTL	EAST HOLSTEIN PRODUCTION GROUPS				
									GROUP 1	GROUP 2	GROUP 3	GROUP 4	
NUMBER OF HERDS		141	561	1532					524	355	367	306	
Reproduction:													
322	DIM at 1st Breeding	88	88	91		74	15	23	17	6	87	91	92
419	Days Open	141	141	142		123	27	53	65	27	138	140	145
416	Services/Conc (Prog)	505	485	502		385	26	65	74		475	515	515
2	01	2	05	1	98	2	22	75	65	1	2	06	1
320	Calv Interval (Last)	13.4	13.6	13.7		12.9	26	15	2.0	29	13.6	13.6	13.6
321	Calv Interval (Next)	13.8	13.9	13.9		13.6	25	18	2.4	48	13.6	13.9	14.0
122	Days Dry	62	63	62		62	36	37	23	43	61	61	65
621	1 Avg Age at Calving	27.5	27.8	27.5		26.8	51	11	2.9	47	26.8	27.6	27.9
Left Herd:													
734	RMA % Leaving Herd	41%	39%	39%		44%	80				38%	40%	41%
Genetic Evaluation:													
230	Cows with PTA Data	7161	27340	76550		700	89				33130	17940	16260
231	1 Cow PTA LBS Milk	800	834	950		887	62	51	460	70	1043	932	862
231	2 Cow PTA LBS Milk	730	761	875		968	79	53	521	76	973	874	783
231	3 Cow PTA LBS Milk	401	434	544		828	93	72	598	75	664	556	441
326	Sires with PTA Data	7884	31130	86590		118	89				38790	20900	18640
327	Sire PTA LBS Milk	1170	1199	1329		1617	74	44	631	39	1406	1345	1262
332	Sire PTA LBS Protein	36	36	40		43	87	43	18	40	42	40	38
423	Serv Sires with PTA	3352	15000	50110		80	95				21580	11540	10940
424	Serv Sire PTA # Milk	1859	1948	2078		1709	29	44	748	88	2103	2074	2065
427	Serv Sire PTA MFP \$	221	228	240		201	29	38	76	83	244	238	236
429	Serv Sire PTA # Prot	55	57	60		49	29	47	23	90	61	59	58

* Needs Improvement

DIESEL FUEL USERS... Help Prevent Low Sulfur Fuel Problems

Use **FPPF** Fuel Treatments

With Every Fill Up.

FUEL POWER

- #1 Year 'Round Additive
- Totally Disperses Water
- Lubricates Entire Injection System
- Cleans & Decarbonizes Injection System
- Prevents Algae Growth
- Provides Greater Power, More MPG.



LUBRICITY PLUS

- Increases Lubricity of Today's Low Sulfur Fuels.
- Prevents Fuel Injection System Wear Due To Low Lubricity in Diesel Fuel
- Prevents Stalling.
- For Premium Diesel Fuel - We Recommend a Combination of Fuel Power and Lubricity Plus



For further information, write/call:

MILLER DIESEL INC.
 DIESEL FUEL INJECTION
 & TURBO CHARGER SPECIALIST
 TUNE UPS AVAIL. BY APPT.
 6030 Jonestown Rd., Harrisburg, PA 17112
 717-545-5931 Interstate 81 Exit 26
 1-800-296-5931

NEW ROBIN HEDGE AND GRASS TRIMMERS



"As Good As The Best and Better Than The Rest" Ask Any Owner

ALL ROBIN GRASS TRIMMERS & BRUSH CUTTERS Protected By Limited LIFETIME WARRANTY

Model NBF171 GRASS TRIMMER/BRUSH CUTTER

\$157.00

- Solid State Ignition • Auto Clutch • "Sight-Glass Primer" Helps Prevent Flooding
- Designed For all Position Operation • Weighs Only 9.6 Lbs. • Includes Shoulder Strap • 2 Yr. Limited Consumer Warranty

Model HT200L HEDGE TRIMMER

- 20.3cc (1.1 HP) two-cycle Robin engine with solid state ignition • Diaphragm-type carburetor designed for easy starting and all-position operation 24-inch blade with a tooth pitch of 1.4 inches • Two-year limited consumer warranty • Weight 10.9 lbs.

SPECIAL PROMOTION PRICE \$299.95

Model NB251 GRASS TRIMMER/BRUSH CUTTER

- 24.5 cc two-cycle Robin engine • Robin straight shaft • Quick Feed Poly Line Head • Shoulder Strap • Tool Kit • Weight: 8.6 Lb.

ALL NEW!

Model FL411 BACK-PACK BLOWER

- 40.0 cc (2 HP) two-cycle Robin engine with solid state ignition • Float-type carburetor • 3-quart fuel tank • 365 cu. ft. per minute (186 MPH) maximum air volume • Interlocking tubes • Two-year limited consumer warranty.



Model NF11BDM BACK-PACK DUSTER & MIST BLOWER

- 40.2 cc (2 HP) two-cycle Robin engine with solid state ignition • Standard equipment includes 60-inch interlocking discharge tube set, mist attachments, static discharge chain and tool kit • Two-year limited consumer warranty • Weight 23.4 lbs.



19 Different Models of Trimmers and Blowers To Choose From!

Union Co. J.L. Peachy And Sons Winfield, PA 17889 717-988-0465

Lancaster Co. Lawn Care of PA Martindale, PA 717-445-4841

York Co. Eastern York Repair Wrightsville, PA 17368 717-252-0286

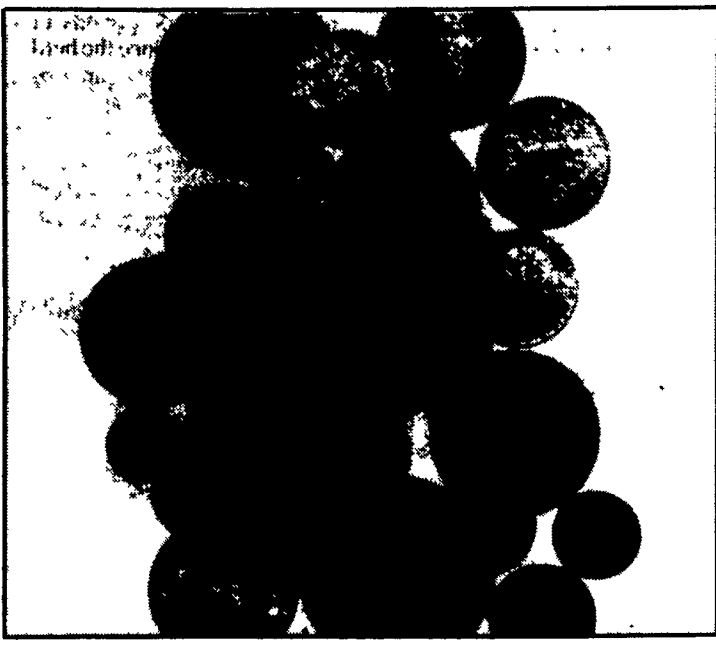
Chester Co. Zook Engines Honey Brook PA 19344

Lancaster Co. Mascot Sharpening & Sales 434 Newport Rd. Ronks, PA 17572

Lancaster Co. Chestnut Hill Sales and Service Christiansburg, PA 17509 215-825-3339

Cumberland Co. Blue Mountain Small Engine Repair Newburg, PA 17240 717-423-5358

Lancaster Co. Horst Repair East Earl, PA 17519 717-445-6657



STEINMETZ WANTS TO BUY YOUR COINS

Whether you have a single coin or thousands, we urgently need to buy your U.S. copper, silver and gold coins.

Call for an appointment or come in and let us see your coins and offer you the best market prices. We will come to you for larger collections. Get our free offer before you sell.



350 Centerville Road, Lancaster, PA 17601 (717) 299-1211