

Indiana Livestock

Homer City, PA
Thursday, June 9, 1994

Report supplied by Auction
BEEF: HEIFERS GOOD 64.00-65.00, MEDIUM 60.00-62.50, COMMON 60.00 DOWN. STEERS: GOOD 68.00, MEDIUM 64.00-66.00, COMMON 64.00 DOWN. COWS: GOOD 51.00, MEDIUM 44.00-49.00, COMMON 35.00-42.00. BULLS: BUTCHER 67.50, BOLOGNA 57.00-61.00. FEEDERS: GOOD 300-400 LB.

STEERS 85.00-90.00, MEDIUM 300-400 LB. 80.00-85.00, COMMON 70.00 DOWN.
CALVES: 85-115 LB. (BULLS) 120.00-155.00, 85-115 LBS. (HEIFERS) 135.00-190.00, 80 LB. UNDER 65.00-85.00, 120 LBS. OVER VEAL 250 90.00-99.00.
LAMBS: GOOD 65.00-68.00, MEDIUM 60.00-65.00, COMMON SHEEP 20.00-32.00.
HOGS: 245 LBS. UP 40.00-42.00. SOWS 30.00-35.00, BOARS: 26.00, LITTLE PIGS: 28.00-30.00 PER HEAD, GOATS: 20.00-55.00 PER HEAD.

Buffalo Valley Produce

Mifflinburg R3
June 7, 1994

Sale every Tuesday and Thursday
Report Supplied by Auction
ASPARAGUS: 1.15 1/2 LB. BUNCH.
BEDDING PLANTS: 3.00-7.00.
CANTALOPES: 1.75.
GERANIUMS 4 1/2 IN. 1.10 7/8 IN. 2.50.
HANGING BASKETS: 10-IN. 3.00-7.00. 8-IN. 3.00.
PEAS (SUGAR): 1.25 LB.
RADISHES (BUNCH) .35.
SPRING ONIONS: .37 BUNCH.
FLORIDA TOMATOES: 17.00 25-LB.

STRAWBERRIES: 1.50 QT.
WATERMELONS: 3.40.
ZUCCHINI: 5.50 1/2 BU.

Jersey Shore Livestock Market, Inc.

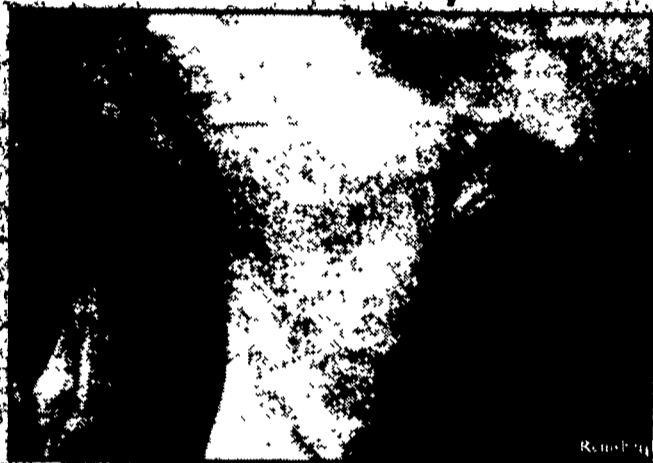
Auction every Thursday
at 4:00 p.m.
Jersey Shore, Pa.

Report supplied by Auction
Thursday, June 9, 1994
RETURN TO FARM CALF
100.00-240.00

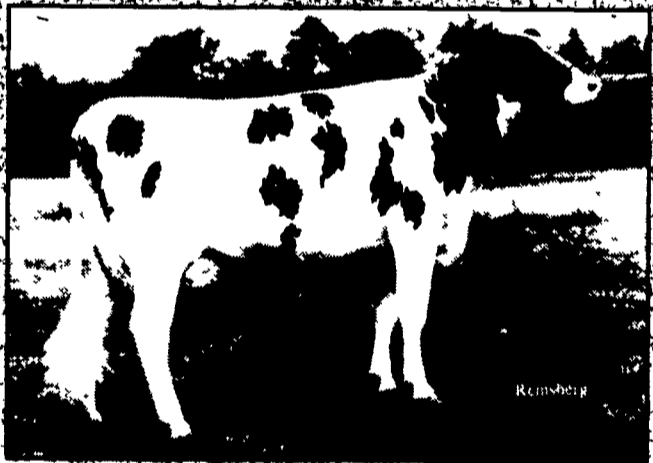
GOOD VEAL: 70.00-99.00.
COMMON VEAL: 30.00-69.00.
COMMON STEERS: 50.00-60.25.
COMMERCIAL COWS: 44.00-50.00.
CANNERS-CUTTERS: 40.00-47.00.
SHEEPS: 25.00-39.00.
SELECT HEIFERS: 55.00-59.25.
COMMON HEIFERS: 50.00-54.00.
GOOD FEEDERS: 60.00-70.00
COMMON FEEDERS: 40.00-59.00
BULLS: 53.00-59.00.
GOOD HOGS: 39.00-41.25
HEAVY HOGS: 37.00-38.00.

Reliable
LEADER

+2.21 Udder Composite



LEADER is consistently giving away the good cows that know how to make money. At PA's reliability, use this Customer Satisfaction line with confidence. His +2.26m and top is complemented with a +2.71 PTAT and +2.21 U.C.



9H1360 Kingles LEADER *RC *TL, VG-86, GM
Milk +2265m 3548 daughters, 1671 herds
Protein +8241 -.01% +68p Rel. 99%
Fat +8248 -.18% +44f Rel. 99%
Net Merit +\$181
HA and USDA, January 1994
PTAT +1.71 Rel. 99% 1,000d/604h TPI +1129
NAAB CALVING EASE, JANUARY 1994
% Difficult 1st Births Rel. 99% 4,128 calvings

RR2, Box 29, Tunkhannock, PA 16607 Phone: 717-836-3166 FAX: 717-836-1400

Pennsylvania Livestock Auction

Waynesburg, Pa.

Thurs., June 9, 1994

Report Supplied by Auction

CATTLE: SL. COWS: UTILITY & COMMERCIAL 44.00-50.00; CUTTER & BONING UTILITY 41.00-46.25; CANNER & LOW CUTTER 38.00-41.00; SHEEPS 38.50 & DOWN. BULLS: YIELD GRADE 1 1500#-1870# 56.00-60.00; YIELD GRADE 2 1000#-1400# 48.00-57.00
FEEDER STEERS: M&L-1 300-500# 70.00-85.00, 250-280# 75.00-80.00, M 900-1000 55.00-68.00. HEIFERS M 1&L-1 300-500# 70.00-80.00; L-1 400-650# 60.00-75.00. BULLS M&L-1 300-620# 58.00-70.00.

CALVES VEAL: PRIME 80.00-90.00, CHOICE 74.00-85.00, GOOD 60.00-72.00

FARM CALVES #1 HOLSTEIN BULLS 90-120# FEW 100.00-125.00, #2 HOLSTEIN BULLS 80-100# FEW 75.00-100.00; BEEF X BULL & HEIFERS /HD 75.00-140.00

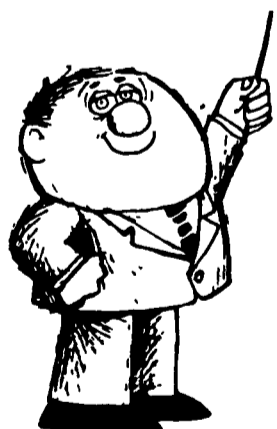
HOGS BARROWS & GILTS #1-2 210-255# 40.00-42.50, #2-3 255-280# 35.00-40.00, SOWS #1-3 300-500# 30.00-38.00

FEEDER PIGS 1-3 25-35# 12.00-30.00/HD

LAMBS HIGH CHOICE 55-75 LBS 58.00-65.00, CHOICE 90 105# 55.00-65.00, FEEDER LAMBS GOOD 58.00-70.00, SHEEP 15.00-40.00

GOATS LARGE: 35.00-95.00/HD, MEDIUM 25.00-40.00/HD, SMALL 10.00-30.00/HD

HORSES 45.00-70.00, PONIES 20.00-50.00



A LESSON WELL LEARNED... LANCASTER FARMING'S CLASSIFIED ADS GET RESULTS!

PENNSYLVANIA
Central PA
J. Hershey Myer
Phone: 717-523-3090

North Central, PA
Rod Prutsman
Phone: 607-525-6274

Southeastern PA & NJ
Eldon Ford
Phone: 717-933-5961

MARYLAND MD, WV Sales & Service Director
Ted Ridgely
Phone: 410-635-6544

Direct Herd Rep.
Earl Kepner
Phone: 717-935-2485

Western PA
Russ Jacques
Phone: 814-425-2562

Direct Herd Rep.
Nelson James
Phone: 610-562-7117

Toll Free Technician Service
1-800-227-6417

Northeastern PA
Don Hibbard
Phone: 717-836-3168

Southcentral PA
Ed Guinac
Phone: 814-847-2520

WEST VIRGINIA
Steve Cronin
Phone: 304-884-8172

Direct Herd Reps:
Peter Bohacek
Phone: 301-371-6834
Dave Elston
Phone: 301-898-9125