

103 ACRE LIMESTONE FARM LEBANON CO., PA

RICH BRANDT FARM REAL ESTATE

2033 Penn Avenue, West Lawn
Reading, PA 19609
(717) 274-3622 - Office - (610) 678-1122
FAX: 610-678-8158

HUNTERS!!! CENTRE COUNTY

176 ACRES \$69,900
Adj. Sproul State Forest! Stream, Close to Blanchard Dam! Excellent Hunting Property! Call for Apt.!

174 ACRES \$89,900
Adj. Sproul STATE FOREST! Stream! Close to Blanchard Dam! Unbelievable View! Easy access from Rte. 364!

CLINTON COUNTY

21.118 ACRES \$24,900
Adj. State Forest! Excellent Hunting! Possible Owner Financing! Locked gate access from township road!

60+ ACRES \$69,000
Heavily Wooded! Loganton Area! Many streams! Close to State Forest! Twp. Road Frontage! Amish Neighbor!

WANTED!! — FARMS TO SELL!

STERN REAL ESTATE

2217 Teaberry Lane, Lock Haven, PA 17745
(717) 753-VIEW

FARMS - HOMES COMMERCIAL WEEKEND RETREATS - HUNTING LAND

JUNIATA COUNTY, PA 40 TO 60 MILES WEST OF HARRISBURG

50 ACRE GENERAL FARM, 34 tillable, 2 story frame dwelling, large bank barn, sheds, trout stream, frontage w/no traffic, \$165,000;
100 ACRE GENERAL FARM, 65 tillable, 2 story frame dwelling, bank barn, lot of Township road frontage w/no traffic, \$170,000;
23 ACRE POULTRY FARM, 18 acres cleared, 2 broiler houses, 2 story, 40x300, Chore Time equipment, \$225,000, make offer;
MID 1800 STONE HOME, 15 acres, 3 cleared, stocked trout stream, secluded, 30x60 treated pole machine shed w/work shop, old stone grist mill in poor condition, \$150,000.
MID 1800 STONE HOME 2 story, 3 bedrooms, 2 1/4 acres, mostly wooded, small stream, 2 story stone & frame spring house, secluded, \$76,900,
LATE 1700 LOG HOME, 2 story, 3 bedrooms, 32 acres, 3 cleared, hemlock trees, nice small stream, never failing spring, \$125,000;
CABIN ON 80 ACRES, 3 acres cleared, small pond, 2 story 2 bedroom cement block cabin w/screened porch, secluded, \$140,000,
SUMMER HOME, 2 story 3 bedroom, 2 1/4 cleared acres, nice view, stocked trout stream & lot of State Land nearby w/forest service roads, priced for quick sale at \$52,500.
2 - 81 ACRE TRACTS MOUNTAIN LAND, 40% level, easy access, both border STATE GAME LAND, \$100,000 make offer and \$81,000, owner financing to qualified buyer;
55 ACRES RIDGE LAND, wooded, stocked trout stream, near STATE LAND, owner financing to qualified buyer, \$59,500;
15 ACRES MOUNTAIN LAND, building site at bottom near public road w/little traffic, very easy access, near Juniata River, priced to sell at \$18,000;
1 1/2 ACRES, level, stream, partly wooded, easy access, \$15,900;
2 1/2 ACRES, level, wooded, easy access, \$11,900;
5 ACRES, level, wooded, easy access, \$15,900,
18 ACRES, level to gentle slope, wooded, easy access, \$24,900;
3 COMMERCIAL BUILDINGS, EAST WATERFORD, vacant, 50x100 and 30x125 clear span, cement block construction, interior finished, both heated and air conditioned, 40x100 clear span, frame construction, concrete floor, 0.88 acre, well & septic, frontage on Rt 75, lot of potential for small family business, asking \$75,000 make offer;

"ALL PERMITS ON ANY PROPERTY GUARANTEED PRIOR TO OR AT SETTLEMENT"

LARRY LONG REAL ESTATE

JUNIATA COUNTY'S FOREMOST FARM AND LAND AGENCY
THE AGENCY THAT HANDLES ALL RED TAPE
30 YEARS EXPERIENCE
CALL ANY TIME
717-527-4784

556 Ac. +- of remote wonderful, wooded hunting land, waterfall, river frontage Peaceful area of WV \$175,000
Call Cindy Rosson At
A&A Realty/Better Homes
and Gardens
1-800-336-5253

THE REAL ESTATERS OF MANSFIELD

1671 S. Main St., Mansfield, PA 16933
(717) 662-2138 • Evening (717) 662-2363

TIOGA COUNTY DAIRY FARM

60 tie stall barn w/40 cows on pipeline now and 14 more ready to hook on for \$1,200. Currently 4 rows + box stalls on 2 barn cleaners. 2 silos w/unloaders, 2 outbuildings, 2 bdrm trailer for hired man. 3 to 4 bdrm, 2 story farmhouse. 82 acres w/additional 100+ leased for \$1,500. Just \$149,900. M-416

AFFORDABLE DAIRY FARM

58 tie stall barn (head to head) on S S pipeline w/bulk tank 2 silos, 5 yr old, 4 bdrm, split level ranch home. Ideal pasture farm buy feed setup. Stream through property. Paved road frontage. \$129,900 w/74 138 acres. More land available. M-402

SMALL BEEF OR HORSE FARM

2 story bank barn and pole barn/machinery shed set up for beef. Approx 90 acres (will survey in spring) w/tillable, pasture, woods and small pond. 1 1/2 story farm house needing some repairs. Asking \$89,900. Wells Township, Bradford County, Troy Schools M-140

DRASTICALLY REDUCED:

20x24 Recreational Chalet w/8x20 deck overlooking Hammond Lake & Ives Run State Park complex. Boating, fishing & hunting are all available out your front door. Front has glass wall effect leading onto deck. Woodstove included. Underground utilities to 2 acre tract. WAS \$29,900 Now JUST \$25,900. M-395

OWNER FINANCED ACREAGE!

10 acres in Tioga River Vista Subdivision suitable for camp or recreational use. All wooded w/Mt. Laurel thruout. Approved perc site. Within walking distance of State Forest Lands. \$10,900 w/\$3,900 down bal. \$7,000 5 yrs 9.75% int. \$147 87 p/m. M-453

LANCASTER COUNTY

Rapho Township, Lancaster County. 86 acres of limestone soil. 50'x100' steer barn with a 34'x120' covered steer feeding area, 20'x62' poured concrete Star silo with a Badger unloader, 20'x80' poured concrete Star silo with a Jamesway unloader. Outbuildings include a 50'x75' implement shed, 20'x40' corn barn and a 24'x35' tobacco shed. A 200 gallon/minute well has sufficient capacity for irrigation. The 2 1/2 story stone house is set up for two families. The property is Zoned R-2 and AG. **\$645,000.**

TIOGA COUNTY FARM

179 Acres - 93 acres tillable, 47 acres pasture, 35 acres wooded. Valusia, Conona, Lordstown, Mardin, Shenango soils with clay subsoil. High state of cultivation, very good corn and alfalfa soil. 45'x90' frame 1 Story barn with part 2 Story, 24'x72' implement shed, 2 1/2 Story frame 3 bedroom dwelling with forced hot air heat and wood stove, 3 acre pond, 110' well with 10 gallon per minute. **\$199,900.**

(717) 665-2401

**FULL
SERVICE
REALTY**

112 S. Main St.
Manheim, PA
17545-1697

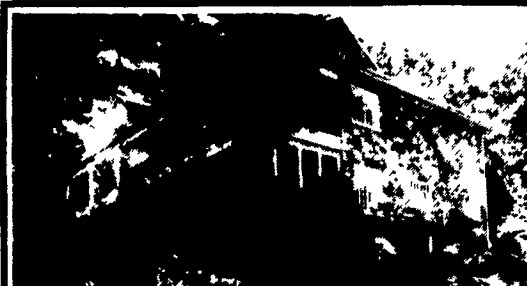
CENTRAL VIRGINIA FARMS: Farms available from 5 to 500 acres, reasonable prices, very low taxes, farmer friendly communities, agricultural economy, free catalog.

State Wide Realty Co.
Farmville, Virginia
804-392-6163
Farms & Rural Properties
Low Prices, Low Taxes, Free Catalog



Operating dairy farm in Madrid, NY. 221 acres, 125 in high state of cultivation. 60 stall modern barn with attached 15 stall heifer barn. 2" SS 4 unit pipeline, 2 bulk tanks, heat exchanger, new compressors. New barn cleaner chain & motor, 3 silos w/unloaders, 38 head free stall equipped with Patz feeder & conveyor system, Ritchie waterer. New 10T. bulk feed bin with auger, enclosed manure shed, attached 6,000 capacity hay barn, 2 machinery storage buildings. Nicely remodeled 2 story brick house with attached 2 car garage. 4 bedrooms, 1 1/2 bath, some appliances included. River and road frontage. In farming community, near town. **Reduced to \$140,000.**

For more info. call 315-322-0132 evenings



ROSEHILL MANOR - 209 ACRES

This elegant country estate featuring a 5,000 sq. ft. stone Manor House built by a wealthy Coal Baron, of structural steel and native stone, found amid the beautiful Blue Mountains. The Manor House displays a sophisticated country charm with a gracious entry way consisting of 24' ceiling, open balcony, and marble floors, spacious living room & dining room, den with massive fireplace, ultra modern kitchen, 6 bedrooms, 4 1/2 baths, elevator to all levels and large porches to enjoy the serene mountain setting. Amenities include a large heated pool, pool house, tennis courts, 2 ponds and a spring fed mountain stream. The bank barn is ideal for horses and the land is approx. half tillable and half wooded. **Price - \$1.3 Million**

Many Other Country Estates & Farms Available



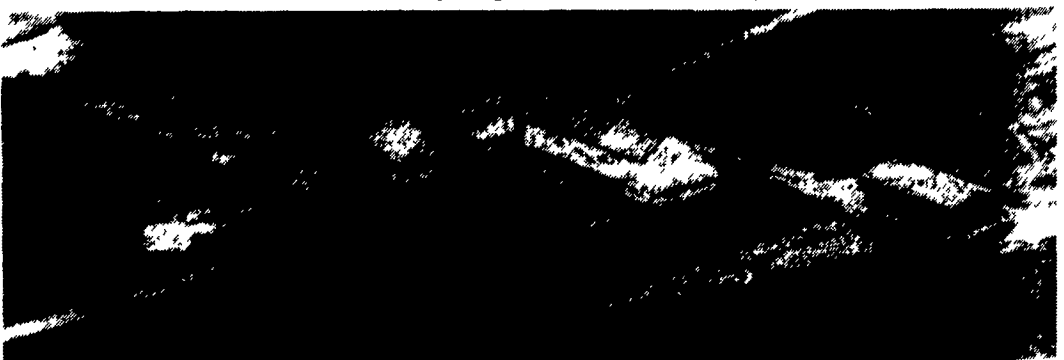
**new
pennsylvania
realty, inc.**

*Farms, Country Estates,
and Historic Properties*

Rt. 1, Box 123, New Ringgold, PA 17960

Perry Long • Gary Coles
215-264-3025 or 717-386-5000

118 ACRE FARM



Lush farm land in Lynn township, Lehigh County, PA, circa 1863.

This brick farmhouse contains six bedrooms, eat-in-kitchen, two living rooms, parlor, one full bath and two half baths. Summer kitchen, full basement, attic. Bank barn, pole barn, implement shed, garages, other out buildings. Potato storage root cellar, stream, very well kept, Call for more information.

Contact Pete Ciliberti III - (610-437-1771)

Merritt O. Miller Real Estate

925 NORTH 19TH STREET ALLENTOWN, PA 18104