

Wanted To Buy Small greenhouse operation on 20-30 acres w/house VA or PA 703/620-0147

WISCONSIN DAIRY FARMS 30 cow to 150 cow, Up. Excellent Prices & Terms for Spring Possession Call now! L.L. STEWART, Realtors, 2007 Hogeboom, Eau Claire, WI 54701, 715/834-6664

**SOUTHERN VIRGINIA FARMS FOR SALE AND LEASE**  
**Freddie S. Smith**  
 703/639-2262  
 703/382-0570  
 after 8 pm

**Steuben Co., NY Amish Area**  
 60 +/- Acres  
 Wooded 1/2 mile frontage.  
 Good timber.  
 Good hunting.  
 Highway access  
 Addison, NY  
**\$28,800**  
 908-496-4623

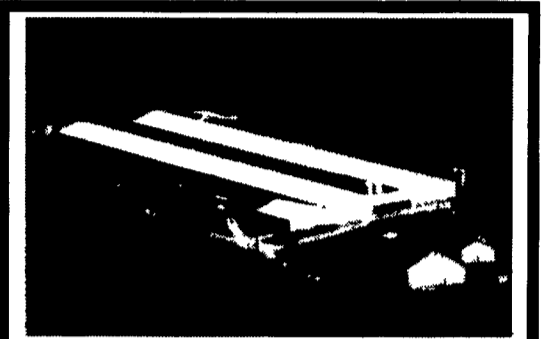
**LAND FOR SALE**  
 50 acres mostly wooded located on Tioga/Bradford County line near Mansfield, PA. Near State Game Lands, state parks, Tioga/Hammond Recreation Area. Ideal for hunting or vacation. Hard road, utilities available. Perked for cabin or home. Asking **\$49,900**  
 717/297-4438

**225 ACRE RIVER BOTTOM FARM**  
 Lycoming Co., PA  
 Four bedroom brick home, barn, and outbuildings. Secluded Beaver-built marsh **\$345,000**  
 J.E. STUCHELL  
 RE/MAX  
 WEST BRANCH  
 717-321-1013

**A RARE FIND!**  
 Authentic colonial brick 4 bedroom two story home with gourmet lovers kitchen All graced by 17 quiet acres plus barn in beautiful Adams Co Only min from major highway & easy access to Harrisburg, Washington D.C., Baltimore & more **\$300,000**  
 Call  
**ERA Anderson RE**  
 Gale Bear  
 717-766-0055 -  
 717-258-6821

**FRANKLIN CO., PA**  
 8.5A farmette, 4 miles south of Roxbury. Large real nice farmhouse 100+ years old, barn fixed for 275 veal calves, excellent veal calf contract available. Would also make excellent horse/ beef/ hog farm. Beautiful Blue Mountain 1/2 mile in background.  
**\$150,000 OBO**  
 No Sunday Calls  
**717-264-8301**

**Northern NY Dairy Farm For Sale By Owner:**  
 265 acre, 115 productive level tillable acres. 38 stalls on Surge pipeline w/ 1000 gal. Muller tank and heat reclaim. Loose housing and stalls for young stock. 40 X 80 Quonset shop/ equipment storage. 18 X 60 concrete stave silo. House in excellent condition, \$30,000+ invested in last two years. Secluded rural setting. 37 cows averaging 84 lb./day. 20+ Heifers and young stock. 22000 lb. ± herd average. JD tractors and full line of forage equipment in good condition. Some owner financing possible to the right buyer.  
**\$190,000 takes all.**  
 Must sell. **518/497-6357**



**200,000 LAYER OPERATION**  
 Located in southern Lancaster County. Financial information available to qualified buyers. Modern facility with up-to-date equipment & back-up generator system. Agricultural zoning 5 Bedroom home included.  
 Call 1-800-325-2131. Q11522  
**AMERICAN HERITAGE**  
 Willow Street 717/464-4700  
 Quarryville 717/788-2131  
 Strasburg 717/887-0599

**NORTHUMBERLAND COUNTY**  
 48 Acre General Farm, near Watsontown, 3 bedroom brick house, bank barn, 2 silos 16 x 60 & 16 x 40, loose housing w/bunk feeder. Limestone soil, all tillable, **\$169,000**  
 2 acre farmette, set up for 21,000+ broilers, barn and numerous outbuildings, 2 story frame house, **\$87,000.**

Harry Zimmerman  
 717-299-4885; 1-800-472-2641  
**Town & Country REALTY**  
 250 N. Duke St.  
 Lancaster, PA 17602

**AUCTION**  
**Mon., July 11 at 7 PM**  
 48 acres with extensive dairy operation (over 34,000 square feet of building)  
**LOCATED IN NORTH CENTRAL INDIANA**  
 For Details Call Gary Bailey  
**1-800-659-9759**  
**SCHRADER AUCTION CO.**  
 219-244-7606

**SANFORD G. LEAMAN REALTOR/AUCTIONEER**  
 1 (800) 836-8113 Toll Free  
**162 acres w/river bottom soil approx. 25-28" deep.** This well drained soil is excellent for all crops. Lots of implement storage, horse barn, silos and much more. Call today. I'll show it to you.  
**Tioga Co. hog, poultry or beef property** reduced to \$175,000 so hurry and get started for 1994 in a good farming situation. You will be pleased at what you get for this price.  
**250 acres prime hunting wood land** in Lycoming Co. close to lake & State Game Lands.  
**Bradford Co. - 400 acres dairy** with 95 comfort stall barn, lg. implement shed, 2 dwellings, 5 silos, stream & lots lots more. Call for details.  
*Need farms in Amish area of Bush, Sugar & Nittany Valleys.*

**N of Reading, Perry Twp, new 3 BR house & 25 acres, 4 streams, approx. 40 young fruit & nut trees, berries, some woodland. Must see to appreciate. To be sold at Public Auction 6/17. Call Zettlemoyer Auction Co (610) 395-8084**

**Bradford County, PA Columbia Cross Roads**  
  
 240 acre Farm, 2 houses, 2 barns (180'x85'), (40'x160'), 2 - 24'x90' concrete silos, complete manure facilities & storage buildings.  
**610-273-3761**

**BRADFORD CTY - CANTON TWP.**  
  
 80 Acres of Privacy with Great View. New bath, furnace, wiring, insulation, large bank barn ideal for beef, sheep or horses. 30 more acres with stream available.  
**\$155,000**  
 Call 717-524-5700

**So. Northumberland Co. & Surrounding Counties**  
**75 acres, no house, road frontage, Douglas Fir, Norway Spruce, Colorado Blue Spruce & others (40,000), woods, stream, tillable. 100% Owner Financing.**  
**5 miles north of Gratz. 20 to 100 acres, large home, beef barn, silos, machine shed. Rent Option Possible.**  
**Near Gratz. 100 acres, 91 tillable, large home, barns, 10,000 Christmas trees. Rent Option or Low Down Possible.**  
 These two farms are adjacent to each other.  
**17 acres, large barn, log home, private & secluded, large pond, 12 acres tillable, balance pasture. Home needs work, Owner to pay for materials. Rent Option or No Down Possible.**  
**20 acres, large barn, home needs work, private & secluded, pond. Rent Option or No Down.**  
**9,000 sheared Douglas Fir, Christmas trees & 1,000 Fraser. These can be bought over 1 to 4 year period.**  
**3 1/2 acres wooded, \$29,000. Owner Financing.**  
**16 acres, all tillable, \$49,000. Owner Financing.**  
**PETER B. CORTELYOU**  
 Real Estate Herndon, PA 17830  
 Peter B. Cortelyou, Broker 717-758-9177

**WIMPLE ASSOCIATES**  
 "NEAT AS A PIN"... 201 acre dairy in prosperous area with excellent, well-drained soils. Barn has 72 stalls, pipeline, 16x40 silo with Patz unloader. 36x80 steel machine shed. Attractive 3 bedroom stone home with 2 baths. INCLUDES: 56 milkers, (18,000 lb. herd), tractors and complete line of well-maintained machinery. \$299,000  
**NICE-LAYING ALFALFA GROUND: 157 acres, 120 tillable.** Two relatively new barns; 20x80 and 40x60. Silo. Bunker. Original 3 bedroom home, oil/wood heat. Near Pennsylvania border. ONLY \$65,900. Call 607-792-3355.  
**Mort Wimple Associates**  
*Real Estate Sales - Management*  
 "ESTABLISHED 1953" U.S. ROUTE 20 SLOANSVILLE N.Y. 12160  
 FREE FARM CATALOGUES (518) 878-8355  
 FAX: (518) 878-8749

**Mt. Cabin For Rent**  
 McClure, Pa.  
 Mifflin County On 315 Acres, Utilities.  
 One Hr. To Penn State. Hiking, Swimming, Biking, Hunting, Fishing, Skiing.  
 OPEN ALL YEAR-WEEKLY & WEEKEND RATES 717-658-9555

**DELTA (B17314MCK) McKinley Road-12 Acres,** remodeled farmhouse, barn, office/ apartment, storage bldg, oak stalls, garage, pond, fenced pastures, stream, income potential **\$299,000** CALL **JOAN McALLISTER (410)879-1300 / (410)679-3633**  
**SOUTH YORK COUNTY (B17352HIC) 58 acres** mostly tillable, one building site, 15 minutes to I-83. Zoned Agricultural **\$150,000** CALL **JOAN McALLISTER (410)879-1300 / (410)679-3633**  
**WHITE HALL MARYLAND(B21161GRA) 51 Acre** farm with 4BR Bi-level home. Pasture, woods, stream, pole barn, tillable land CALL **JEAN MORRISON (410)879-1300/ (410)879-2767**  
**O'CONNOR, PIPER & FLYNN, REALTORS**  
**BEL AIR/FALLSTON OFFICE**  
 1814 Belair Road  
 Fallston, Maryland 21047

**Northern York County, Pa, Farnette**  
  
**View deer from front porch Farnette w/approx. 2 acres**  
 Farm House extensive expansion & renovation. Large hand hewn 2 story bank barn and various other buildings. Add'l land available, located 5 miles south of Harrisburg. Also good rental income possible. Call Connie Dollase for more info  
 (717) 761-4800  
**JACK GAUGHEN REALTOR**

**MALONE, FRANKLIN COUNTY, NEW YORK VEGETABLE/POTATO FARM OR DAIRY FARM**  
 1200 Acres w/700 tillable acres, 500 wooded, 77'x177' pole barn w/ loading dock containing 45'x55' refrigeration cooler; repair shop, fertilizer storage w/4' concrete containment walls, tools, and equipment buildings, quonset building, dairy and calf barn w/attached 96 head free stall, 4 large forage silos, 3 steel grain silos  
 All tillable land in use, growing mostly spinach & cauliflower, and some field corn; 4 bedroom single family home with modern kitchen and in-ground pool; 2 bedroom mobile home EXCELLENT MULTI-PURPOSE PROPERTY.  
 Ideal for various vegetables. Property can be subdivided, ideal commercial campsite location bordering Trout River. Asking \$475,000.00, possible financing. VCR tape available.  
 For Details Call Century 21 Fleury Realty  
 Malone, New York 518-483-4000, or  
 Jerry Shulman Produce Shipper, Inc.  
 Port Jefferson Station, NY 1-800-845-7776 All States

**RE/MAX QUALITY SERVICE INC. (800) 634-0081**  
**ADAMS CO.**  
 • Bring your horses; 29 acres, with 200 year m/l stone home, family room with hot tub, stone fireplace, beams, dinner bell tower, 20 stall horse barn, open span riding arena. May be purchased with 28 to 58 acres. \$295,000.  
**ADAMS CO.**  
 • 75 ACRES NEAR MD LINE with a 2 story home & several out buildings are waiting for you! Prime farm land with privacy & seclusion. \$275,000.  
 For Details Ask For Dan Rodgers  
**1 (800) 634-0081 Office**  
**(717) 229-2841 Home**