

35 TRUCKS & TRAILERS

E-TOWN DODGE

Brand New Utility box for dual wheel truck
 1987 Dodge W100 4x4 Pickup
 1992 Dodge 350 Cummins Diesel Pickup, Dual Wheel, 5 Speed, 2WD, Air, Tilt, 58K
 (9) 1994 Dodge Full Size Pick Ups In Stock 2WD, 4WD, Also Dual Wheel 4WD Diesel

ASK FOR MILTON HESS
 Certified Truck Specialist
 717-367-6644
 717-653-6667
 Elizabethtown, PA

(2) 14' REF. HACKNEY TRUCK BODIES, ROLL UP REAR DOOR, ALUM. FLOOR, VARI TEMP COLD PLATE REIFER UNIT
 \$3,500/PR
 215/723-4606

Sprout Waldren bulk feed trailer, 5 compartments, tandem axle, PTO driven
 Highway tandem axle flat w/5' removable sides
Ebenshade Turkey Farm
 717-687-7631

Huntingdon Equipment

Rentals Available **GOOD USED EQUIPMENT**

Huntingdon Valley, PA • 215-672-9667 • 1-800-543-3833 • Eddie



One Of Two 1987 Ford F-350, 460 Eng. 4 Spd., Great For Pulling Trailers



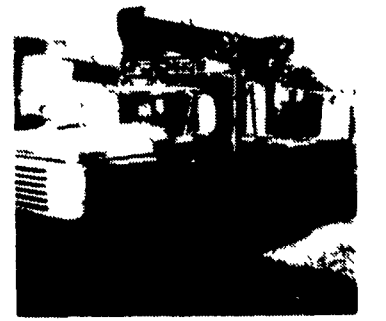
1970 Ford 800 V8 5 Speed with Aux. Trans. 39,000 GVW, VAC Brakes 13'4" Fran Fleet Maintained, 73,000 Miles.



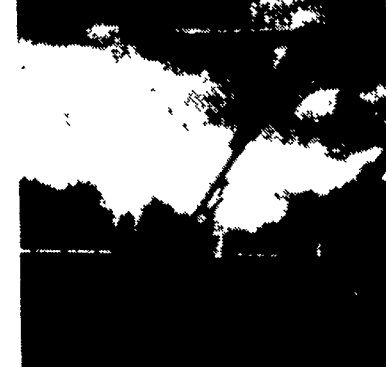
International Presser Digger This Unit Is Ready To Work, Priced For Quick Sale \$9,500 \$8,500



Holan 70' Double Bucket 75' working height mounted on 1981 Western Standard, 6x6 Flatbed, CAT 3208, Auto.



Need a Lift? We Have A Large Selection Of Boom Trucks Up To 14,000 lbs. Cap. Some With Post Diggers.



Bucket Trucks 28' to 65' Gas and Diesel. Call For Details.

DIGGER DERRICKS/AERIAL BUCKETS/UTILITY EQUIPMENT

WILLIAM H. WESSELS USED CARS
 811 Route 15 Dillsburg, PA
 1-800-440-4433 1-717-432-2918
 Notary Public - Temporary Tags

90 CHEV 3/4 TON 4X4
 8600 GVW, 350 V-8, Auto, PS-AC, 78,000 miles-WORK TRUCK
\$8,900

86 CHEV -C30 CARGO VAN
 350 v-8, Auto, PS
\$3,900

91 DODGE GRAND CARGO CARAVAN
 3.3 V-6, All Wheel Drive, Auto, PS, AC - White 68,204 miles
\$10,900

1970 AMERICAN LA FRANCE PUMPER
 Ideal For Irrigation!
\$4,900

NO SALES

WILLIAM H. WESSELS USED CARS
 811 Route 15 Dillsburg, PA
 1-800-440-4433 1-717-432-2918
 Notary Public - Temporary Tags

Frederick THE TRUCK PLACE

CENTRAL PA'S LARGEST GM DEALER! OVER 200 NEW AND USED TRUCKS IN STOCK!

'91 FORD F350 V8, AT, XLT Pkg. w/5th Wheel, Only 22,000 Mi

'91 GMC 3500 FLATBED V8, 4 Spd.

'88 CHEV. K3500 4X4 DUMP

(14) Chev. 1-Ton, Dually Conversion Pick-Ups Extend & Crew Cabs Diesel & Gas

'88 CHEVY K1500 4X4, V8, 5-Spd.

New '94 CHEV. 1/4 Ton 4x4 350 V8, 4.10 Rear Teal Green

Large Stock of NEW & USED CONVERSION VANS

(2) '94 Z71 K1500 4x4's

IF WE DON'T HAVE IT, WE'LL GET IT!

Frederick
 The SUPERMARKET OF TRUCKS
 (717) 274-1461 • PA (800) 222-5523
 Truck Specialists
 • Barb Keefer • Bill Breault • Bryon Bernhard • Morty Mortensen • Jack Bream

1505 Quentin Rd. Rt. 72 - Lebanon
 SALES HOURS:
 Mon.-Fri. 9-9
 Sat. 9-5