

EVERYONE IS TALKING PASTURE AT BROWN'S WE MAKE IT WORK!



100% PASTURE + HAY

CURT & BRENDA DIETRICH — NEW TRIPOLI



WORKING WITH BROWN'S SEED DIVISION
TO FIND PASTURE MIXES RIGHT FOR THEIR FARM

31 HEAD DHI RHA 24,758 MILK, 801 PROTEIN, 694 FAT

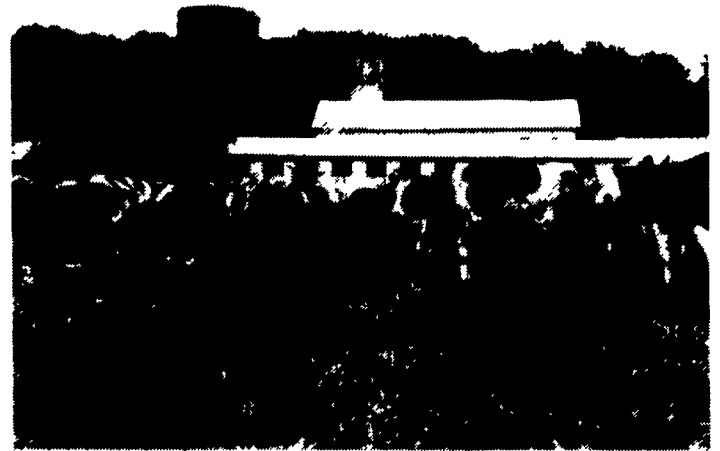
With 61 acres of hillside farm, and a full time job Curt did not want the headaches of owning equipment and renting land. Into his third year of intensive grazing, he likes the idea of only owning three pieces of equipment; a tractor, rotary mower, and manure spreader. Brown's balances his feed program using 34 AMINO PLUS PELLETS and our FLEX—FORMULA system to add the extra energy, minerals, and vitamins top cows on intensive grazing need.

60% PASTURE + TMR

DAVID & CHRIS WILLIAMS — LEBANON

61 HEAD RHA 24,013 MILK, 774 PROTEIN, 808 FAT

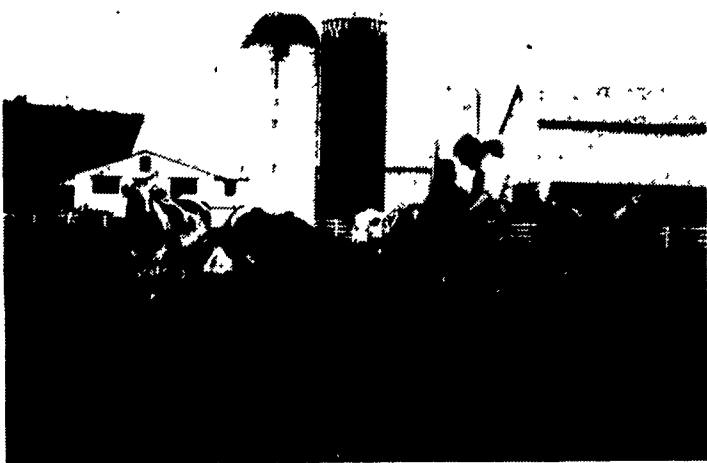
In his third year of grazing, David uses 34 acres of permanent pasture, and 23 acres of temporary pasture efficiently to feed 130 head. Last year he grazed from May 1st to Thanksgiving and averaged 70 to 75 lbs. milk per cow. He calls his cows self-propelled forages harvesters. They also spread manure saving him money since he hires custom operators to do both. BROWN'S 30 HM BALANCER and 30 PROLAC PELLETS balance the undegradable protein, energy, and fiber often deficient in high pasture programs. Breeding and body condition are important to Dave, and he credits BROWN'S supplements with helping to maintain both on pasture.



YESTERDAYS FENCELINE BECOMES TODAY'S GRAZING
IN THIS OLD ALFALFA FIELD WHICH WILL SOON BE PLANTED
IN CORN FOR NEXT FALLS SILAGE/GRAIN NEEDS

25% PASTURE + TMR

EL-GENE HOLSTEINS — MANHEIM



WITH 42 COWS AND EVEN MORE HEIFERS, EUGENE USES
20 ACRES OF LOW LAND PASTURE EFFICIENTLY BUT DOES
NOT RELY ON IT FOR ALL HIS HERDS NEEDS. HE IS SHOWN
HERE WITH DAVE McCracken, BROWN'S AREA DIRECTOR.

Low land pasture provides one-fourth of Eugene's forage needs, but permanent well — managed alfalfa and corn fields make better use of fertile Manheim soils. Brown's balances this program with BROWN'S 40 MILKMASTER and uses the FLEX-FORMULA concept to add cooked beans, extra fat, extra minerals, and vitamins. BROWN'S 24 AMINO PLUS C with delinted cottonseed provide top cows with high levels of undegradable protein and extra fiber. In mid May the tank reading was at 80 lbs. of milk, the top cow was over 40,000 lbs. milk, and a young herd had an ME average of over 26,000 lbs. of milk. Eugene says he is happy with his herds progress and is excited about their future potential. He is pleased with the way his herd has done on Brown's feeding programs, and likes the assistance Brown's Area Director Dave McCracken and nutritionist Dr. Walter Kennett provide him in reaching his herd goals.

THREE HERDS — ONE GOAL — AT BROWN'S WE MAKE PASTURE WORK FOR YOU!!!



F.M. BROWN'S SONS, Inc.

MANUFACTURING LIVESTOCK FEEDS SINCE 1871

BRIDGEVILLE, PA 19008
610-678-4567
1-800-345-3344 IN PA

FLEETWOOD, PA 19522
610-944-7834

SINKING SPRING, PA 19608
610-678-4567
1-800-345-3344 IN PA