

Oklahoma City Feeder Cattle

Weigh-ups mostly average. Quality of cattle average. Slaughter cows and bulls steady to \$1.00 higher. Packer demand good. Receipts this holiday shortened week 4,050; last week 13,833; last year's holiday shortened week 6,522. Supply consisted of 81 percent yearlings over 600 lbs.; 16 percent calves under 600 lbs.; 3 percent cows and bulls. Prices follow with weighted average weight and price in parenthesis.

Feeder Steers: Medium and Large Frame 1: few 300-350 lbs. (343 lbs.) \$102.00-\$105.00 (\$103.40); few 400-500 lbs. (450 lbs.) \$93.00-\$94.00 (\$94.33); 500-550 lbs. (518 lbs.) \$86.00-\$90.25 (\$88.86); 550-600 lbs. (574 lbs.) \$82.00-\$90.25 (\$86.09); 600-700 lb. stockers (650 lbs.) \$79.75-\$87.00 (\$83.72); 600-700 lb. feeders (650 lbs.) \$78.00-\$80.25 (\$79.80); 700-750 lbs. (726 lbs.) \$76.25-\$80.50 (\$78.45); 750-800 lbs. (780 lbs.) \$73.00-\$77.25 (\$75.39); 800-850 lbs. (822 lbs.) \$71.25-\$76.50 (\$73.80); 850-900 lbs. (876 lbs.) \$70.00-\$73.50 (\$72.09); 900-950 lbs. (915 lbs.) \$69.25-\$70.50 (\$69.67). **Holstein Steers: Large Frame 2:** 415 lbs. \$74.00; 565 lbs. \$63.75; 785 lbs. \$55.75; 865 lbs. \$56.00; 940 lbs. \$53.50.

Feeder Heifers: Medium and Large Frame 1: few 250-300 lbs. (292 lbs.) \$96.00-\$98.50 (\$96.94); few 300-350 lbs. (325 lbs.) \$93.50-\$95.00 (\$93.90); 500-600 lbs. (550 lbs.) \$73.50-\$79.00 (\$76.45); 600-700 lbs. (650 lbs.) \$73.25-\$76.75 (\$74.99); 700-750 lbs. (712 lbs.) \$72.00-\$75.25 (\$73.20); 750-800 lbs. (778 lbs.) \$69.00-\$77.00 (\$71.72); 800-850 lbs. (815 lbs.) \$66.00-\$69.00 (\$67.02).

Slaughter Cows: Cutter, Boning, and Breaking Utility Y.G. 1-4 average dressing \$42.00-\$44.75; high dressing boning Utility and Cutter \$46.00-\$50.00, high dressing

breaking Utility \$44.75-\$45.50; low dressing \$39.50-\$42.50.

Slaughter Bulls: Y.G. 1 1300-1800 lbs. low end of average dressing \$57.25-\$58.25; Limousin high dressing and high boning \$62.25-\$64.00.

Replacement Cows: Pretested for Bangs, pregnancy and age Medium and Large Frame 1, average quality 4-5 year old 900-1150 lbs. 6-8 months bred \$645.00-\$730.00.

Pairs: Medium and Large Frame 1, average quality, 3-6 yr old 900-1050 lb. cows, with baby to 200 lb. calves, \$750.00-\$845.00 per pair; few 7-8 year old 900 lb. cows, with 150 lb. calves, \$695.00-\$710.00 per pair.

Westminster Livestock

Hagerstown, Md.

May 31, 1994

Report supplied by auction

SLAUGHTER COWS: 56 HEAD, STEADY TO 1.00 LOWER. UTILITY 45.00-49.00; CANNERS 41.00-45.00; SHELLY 41.00 DOWN BULLS YG#2 1200-1500 LBS TO 56.75.

FED STEERS. HIGH CHOICE 1150-1450 LBS. 64.00-65.75; CHOICE 61.00-64.00; FEW 1700-1800 LBS. 54.00-56.25.

FED HEIFERS: LOW CHOICE 850-1000 LBS. 58.00-61.50; SELECT HOLSTEINS TO 53.25.

VEAL CALVES: 110 HEAD. CHOICE 1245 LB. AT 110.00; CULLS 85-115 LBS. 75.00-90.00; 50-80 LBS. 70.00-85.00.

FARM CALVES: HOLSTEIN BULLS 10.00 LOWER. #1 90-120 LBS. 135 00-154 00, #2 80-100 LBS. 105 00-135 00, HOLSTEIN HEIFERS FEW 95 120 LBS TO 175 00, 75-90 LBS TO 147 00, BEEF X BULLS TO 170.00; HEIFERS TO 110 00 BUTCHER HOGS 40 HEAD, 2 00

LOWER. US#1&3 215-260 LBS. TO 41.00; 270-290 LBS. TO 38.75; 290-350 LBS. TO 34.75.

SOWS: 300-450 LBS. 30.00-33.00; 450-650 LBS. 37.00-39.75.

BOARS: 400-600 LBS. TO 28.50; 230-275 LBS. 30.00-33.00.

STOCK CATTLE: 116 HEAD. STEERS 400-600 LBS. 80.00-89.00; 600-700 LBS. 67.00-80.00; 700-800 LBS. 61.00-69.00.

HEIFERS: 200-400 LBS, 68.00-81.00; 400-600 LBS 61.00-70.00, 600-800 LBS 58.00-68.00.

BULLS 200-400 LBS. 80.00-100.00; 400-600 LBS. 65.00-75 00; 600-800 LBS. 55.00-65.00; 800-1000 LBS. 55.00-60.00.

LAMBS: 60 HEAD. CHOICE 100-120 LBS 64 00-70.00; 70-95 LBS. 70.00-79.00; 30-65 LBS. 70.00-80.00; MEDIUM TO GOOD 60.00-69.00.

SHEEP: 20.00-32.00; HEAVY 13.00-22.00.

GOATS: LARGE 70.00-100.00; MEDIUM 35.00-60.00; SMALL FLESHY 25.00-40.00; SMALL 10.00-25.00.

PIGS AND SHOATS: 60 HEAD. BY THE HEAD FROM TESTED HERDS, 20-35 LBS. 20.00-30.00; 40-50 LBS. 27.00-37.00.

Aberdeen Sales Company, Inc.

Complete Auction & Appraisal Service
Churchville, Md.

Report Supplied by Auction

Wednesday, June 1, 1994

SLAUGHTER STEERS: MARKET 2.50 LOWER. CHOICE 2-4 1100-1400 LBS. 64.50-68.00; SELECT & LOW CHOICE 1000-1500 LBS. 62.00-66.50; HOL STEERS HI CHOICE & PRIME 1250-1400 LBS 61.00-63.00; CHOICE 1200-1500 LBS 57.00-60.00; SELECT ALL WEIGHTS 53.00-56.00.

Lebanon Valley Livestock

Fredericksburg, PA

Tuesday, May 31, 1994

Report supplied by Auction

CALVES: 122 HEAD. STANDARD AND GOOD 70-85 LBS. 50.00-75.00; 115-135 LBS. 60.00-72.00; UTILITIES 45-65 LBS 40 00-52.00; #1 BULL CALVES RETURN TO FARMERS 105-125 LBS. 140.00-169.00; #2 85-105 LBS 132 00-167.00; #1 HOLSTEIN HEIFER CALVES 90-115 LBS. 182.00-220.00; 80-90 LBS. 160.00-182.00; BEEF X CALVES 100-145 LBS 100.00-139.00.

STEERS: 17 HEAD HOLSTEIN CHOICE STEERS 1080-1160 LBS. 58.50-60 25, SELECT 1090-1325 LBS. 51.50-55.75; HEIFERS CHOICE, 6 HEAD, 1145-1170 LBS. 64.25-64.75.

COWS 68 HEAD BREAKING UTILITY AND COMMERCIAL 47.25-50.25; HIGH YIELD TO 52.50; CUTTERS AND BONING UTILITIES 43.00-46.75; CANNERS AND LOW CUTTERS 39 50-44 00; SHELLS DOWN 32.50-38.50.

BULLS: 5 HEAD. 1 YG#1 1210 LBS. 54 75; YG#2 900-1070 LBS. 50.50-54.00. FEEDER CATTLE: NONE.

HOGS: 63 HEAD. #1&2 233-237 LBS. 40.75-41 60, #1&3 225-240 LBS. 39 50-40 50

SOWS 19 HEAD #1&3 425-595 LBS. 36 50 38 50, #2 3 370-455 LBS 34 00-36 00

BOARS 8 HEAD 430-700 LBS 27 00-28 25, 200-300 LBS 27 00-27 50

SHEEP 6 HEAD 45-60 LBS 62 00-67 00, 2 SLAUGHTER SHEEP, 1 AT 26 00, AND 1 AT 21 00

GOAT 1 AT 48 00

Horses can't plan their retirement.

THINGS TO THINK ABOUT

- age
- activities
- health
- allergies
- digestion
- competition
- jumping
- showing
- teeth & ability to chew
- hoof problems
- lack of energy
- sense of taste

But if they could, they'd get their feed from us.

A horse's nutritional requirements and level of activity change as he gets older. But since aging is a gradual process, and no two horses are the same, Agway® offers a variety of feeds for older horses. With the ingredients, nutrition and textures that will help them stay healthy, vigorous and graceful.

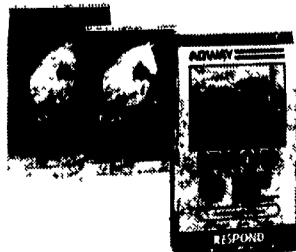
So whether your older horse could benefit from our highly digestible Performance™, extruded, easy-to-chew pelleted Performance™, or Respond's special formulation that

won't aggravate breathing problems, one thing's for sure.

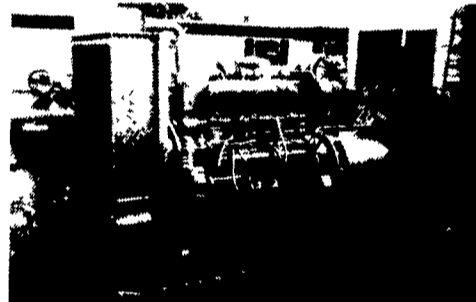
He could benefit from an Agway feed...and Agway advice.

Stop by your local Agway today and talk to one of our feed specialists. They'll give you all the information you need to keep your older horse's retirement happy, healthy and vital.

Just the way he'd plan it.



MARTIN MACHINERY



GENERATORS

Sales ★ Service ★ Rentals
*** Complete Generator Systems**
*** PTO * Portables * 2-1600 KW**
"We Service It If You Have It And Sell It If You Need It"

34 W. Mohler Church Rd.
Ephrata, PA 17522

Tel: 717-738-0300
Fax: 717-738-4329

FOR SALE

USED FEED BINS

- (3) 24-Ton Feed Bins
Excellent Condition
\$1,500 ea.
- (1) 12 Ton Feed Bin
Fair Condition
\$500.00
- (1) Bin Scale Complete With Controls
\$1,000
- (1) Building & Mix Mill With 4 Compartment Bins
\$2,500



We Ship UPS
Check Our Warehouse Prices 24-Hour Service

FARMER BOY AG.

410 E. LINCOLN AVE., MYERSTOWN, PA 17067

Hours: Mon.-Fri. 7:00 to 5:00; Saturday 7:30 to 11:00
PH 717-866-7565