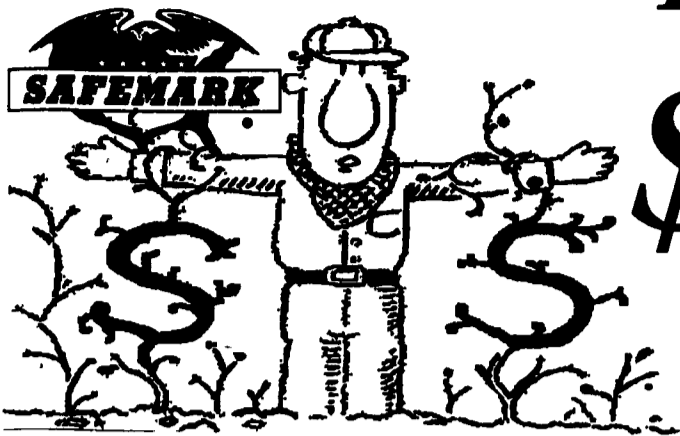


# SAFEMARK

## Take Root With

# \$SAVINGS\$



Start Your Planting Season  
With Our Best Performers:

### Participating SAFEMARK Dealers



- Adams**  
Mar-Bar Tire Service  
Hanover, PA 17331  
(717) 633-6412
- Biglerville Tire & Auto**  
Biglerville, PA 17307  
(717) 677-6336
- Yingling's Implement**  
Gettysburg, PA 17325  
(717) 358-4848
- Bedford**  
Randy's Tire Service  
New Enterprise, PA  
16664  
(614) 766-3889
- Blair**  
Ake's Mobile Service  
Williamsburg, PA 16693  
(614) 832-3251
- Rhodes Farm Supply**  
Williamsburg, PA 16693  
(614) 832-2491
- Bradford/Sullivan**  
Hiland's Farm &  
Home Service  
Rome PA 16837  
(717) 744-2371
- Bradford**  
Isaac's Tire Sales  
Canton, PA 17724  
(717) 673-8121
- Centre**  
Dunkle & Grieb  
Centre Hall, PA 16828  
(614) 364-1421
- Chester/Delaware**  
Enfield Equipment Inc  
Oxford, PA 19350  
(610) 932-8858
- J&L Tire Service**  
Chatham, PA 19318  
(610) 869-0450
- S.G. Lewis & Sons**  
West Grove, PA 19380  
(610) 869-2214
- Stoltzfus Farm Service**  
Cochranville, PA 19330  
(610) 593-2407/2408
- Clinton**  
Dotterer Equipment, Inc.  
Mill Hall, PA 17751  
(717) 726-3471
- Columbia**  
Steve Shannon  
Tire Co., Inc.  
Bloomsburg, PA 17815  
(800) 343-TIRE
- Steve Shannon**  
Tire Co., Inc.  
Rte. 487, Benton, PA  
17814  
(717) 925-2821
- Cumberland**  
Barrick Tire Sales  
Newville, PA 17241  
(717) 776-5762
- Dauphin**  
Farr Family Tire  
Middletown, PA 17057  
(717) 944-4001
- Erie**  
Mike's Auto Repair  
North East, PA 16428  
(814) 725-9091
- Franklin**  
Forrester Farm  
Equip., LTD  
Chambersburg, PA  
17201  
(717) 263-0705
- Stoneham's**  
Waynesboro, PA 17268  
(717) 762-3814
- Bruce B. Gamble**  
& Sons  
Concord, PA 17217  
(717) 348-2670
- Fulton**  
Clugston Farm  
Equipment  
Needmore, PA 17238  
(717) 573-2216
- Greene**  
Burns Tire  
Service  
Waynesburg, PA 15370  
(412) 627-6263
- Lancaster**  
Leola Tire Service  
Leola, PA 17540  
(717) 656-2574
- Messick Farm**  
Equip., Inc.  
Elizabethtown, PA 17022  
(717) 387-1319
- Roadstar\* Retreading**  
Quarryville, PA 17566  
(717) 786-2178
- Lebanon**  
Airtire Corp.  
Palmyra, PA 17078  
(717) 838-5491
- Farr Family Tire**  
Palmyra, PA 17078  
(717) 838-0151
- Lebanon Valley**  
Implement Co., Inc.  
Richland, PA 17087  
(717) 866-7518
- Lehigh**  
Kermit K. Kistler  
Lynnport, PA 18066  
(610) 298-2011
- Joe's Battery & Tire**  
Allentown, PA 18103  
(610) 437-4961
- Mifflin Miller-Lake, Inc.**  
Belleville, PA 17004  
(717) 935-2335
- Northampton/Monroe**  
Northampton farm  
Bureau  
Tatamy, PA 18085  
(610) 759-3254
- Northumberland**  
Rovendale Supply  
Watsonstown, PA 17777  
(717) 538-5521  
(717) 742-7521
- Schuylkill**  
Charles Snyder, Inc.  
Tamaqua, PA 18252  
(717) 386-5945
- Somerset**  
Maple City Tire  
Meyersdale, PA 15552  
(614) 634-0545
- Union**  
Mifflinburg Farm  
Supply, Inc.  
Mifflinburg, PA 17844  
(717) 966-3114/3115
- Washington**  
Canonsburg Supply  
Equipment Co., Inc.  
Canonsburg, PA 15317  
(412) 748-2500
- David Cowden**  
Avella, PA 15312  
(412) 587-3225
- Wayne**  
Pleasant Mt. Tire Supply  
Pleasant Mt., PA  
(717) 448-2054
- Wyoming**  
J. Roberts & Son  
Tire Co.  
Meshoppen, PA 18630  
(717) 833-5582
- Corn Hill Farm, Inc.**  
Etters, PA 17319  
(717) 938-2012
- NEW JERSEY**  
Farmer's Brokerage  
& Supply, Inc.  
Allentown, NJ 08501  
(609) 258-7324

## QUALITY - SERVICE - DEPENDABILITY - ECONOMY

### THE HARD WORKING MULTI-ANGLE M/B

Excellent drawbar pull with long-bar, short-bar lugs for improved traction.

Designed for improved stability and roadability, plus reduced vibration.

Strong angle-braced lugs have self-cleaning design.

High strength polyester cord body and heavy duty rim shield help protect tire from damage.



### POWER MARK L/S RADIAL II Radial Rear Tractor Tire

Radial performance at a significantly lower price.

New cavity shape for low carcass stress and long, narrow footprint, improved durability.

Unique longbar/shortbar and longbar/longbar tread design with increased lug count for excellent roadability.

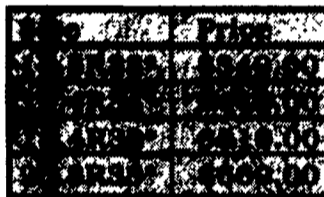
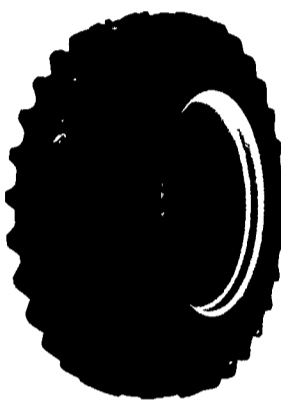
Continuous no splice tread improves tire uniformity and eliminates open tread splices.

Belt package gives excellent bruise and puncture resistance.

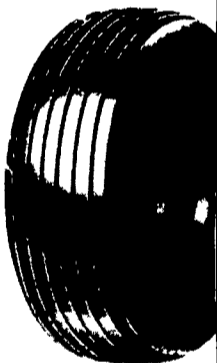
Engineered to full Tire and Rim dimensions

Heavy duty trash shield for extra bead area protection with pry notch.

Size markings on lug face for easy identification in storage.



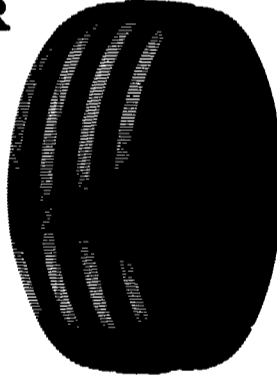
### FARM UTILITY WAGON TIRES



### FRONT TRACTOR 3-RIB



### POWER GLIDE 4-RIB



Size	Ply	Rate Price
9.00-15	6PLY	\$24.00
11.00-15	6PLY	\$44.00
11.00-16	6PLY	\$49.00
12.00-16	6PLY	\$54.00

Size	Ply	Price
6.00-15	4PLY	\$14.00
6.00-16	4PLY	\$15.00
7.00-16	4PLY	\$16.00
8.00-16	4PLY	\$17.00

Size	Ply	Price
7.00-16	6PLY	\$66.00
8.00-16	6PLY	\$89.00
9.00-16	6PLY	\$98.00
10.00-16	6PLY	\$109.00

### BATTERY BARGAIN



**\$47.00**

5-24 650 CA

- Unique Bill board vent appearance
- Higher cranking than conventional batteries
- Sizes to fit most domestic and import cars and light trucks

-Dependable performance in all weather conditions

### FARM TRACTOR BATTERY



**\$66.00**

FC-30H 665 CA

- Rugged high impact case and cover for vibration resistance
- Increased starting power
- Built to last season after season
- Made in USA

# SAFEMARK

Division of Pennsylvania Farm Bureau  
Camp Hill, PA 17011

A Proud Tradition of Quality  
Value and Service

- QUALITY
- SERVICE

- DEPENDABILITY
- ECONOMY

CALL 1-800-PFA-TIRE For Dealer Nearest You

NOW SERVING NEW  
YORK, NEW JERSEY &  
CONNECTICUT