

Hackettstown Poultry & Egg

Hackettstown, N.J.
 Report Supplied by Auction
 Tuesday, May 31, 1994
 Report Supplied by Auction
 HEAVY FOWL .25-.35.
 BANTAMS EACH .50-5.00, BY THE LB. 40-70.
 CHICKS EACH .70-2.30.
 ROASTERS .45-.50.
 PULLETS EACH 3.50-4.50.
 BUNNIES EACH .75-2.50.
 ROOSTERS EACH 2.00-3.00, BY THE LB. 40-1.90.
 GOSLINGS EACH 1.50-2.50.
 TURKEYS BY THE LB. .25.
 DUCKS .70-1.90.
 RABBITS .50-1.35.
 PIGEONS EACH 1.50-5.00, BY THE LB. 1.50-2.00.
 GUINEAS 1.60-1.70.
 DUCKLINGS EACH 1.50-1.75.

WHITE EGGS: EXTRA LARGE & JUMBO .48-.75; LARGE .45-.68; MEDIUMS .30-.48.
 BROWN EGGS: EXTRA LARGE & JUMBO .54-.69; LARGE .33-.65; MEDIUM .35.

Delmarva Broiler/Fryer Market

Wednesday, June 1, 1994
 Movement of ready-to-cook whole birds was generally good. Seller offerings were adequate and easily cleared. Live supplies remained moderate, instances heavy; weights ranged from light to heavy, mostly

desirable to heavy. Processing schedules were very heavy. Less than trucklot asking prices were unchanged at 60 to 70 cents. Trade sentiment varied from steady to higher.
 In the parts complex, boneless skinless breasts were in good balance to closely cleared. Bone-in breasts were available. Legs were in fairly good balance; however, leg quarters were slow to clear at several points. Wings were adequate.
 ESTIMATED SLAUGHTER OF BROILER/FRYERS IN DELMARVA (000)
 ESTIMATED ACTUAL AVG. WEIGHT ACTUAL AVG. WEIGHT 06/01 05/30 05/30 05/25 05/23 2,465 (A) (A) 2,438 4.90.
 (A) - NOT REPORTED TO AVOID DISCLOSING INDIVIDUAL OPERATIONS.
 *BROILER/FRYER CURRENT NEGOTIATED PRICES FOR IMMEDIATE DELIVERY INCLUDES MOSTLY MULTIPLE-DROP SHIPMENTS OF BRANDED AND WING TAGGED TO NEW YORK CITY FROM DELMARVA BRANDED U.S. GRADE A RANGE 49-70 WEIGHTED AVERAGE 61.33 NO. OF BOXES 12,009 *9 of 9 plants reporting.

North Atlantic Shell Eggs

Thursday, June 2, 1994
 Report Supplied by USDA
 MARKET COMMENT: CARTONED AND DISTRIBUTIVE MOVEMENT WAS GENERALLY NO BETTER THAN FAIR. SUPPLIES WERE USUALLY SUFFICIENT TO COVER CURRENT DEALER NEEDS WITH ADDITIONAL OFFERINGS IRREGULARLY AVAILABLE. BREAKERS WERE UNAGGRESSIVE AS OFFERINGS INCREASED AND PRICING BECAME

MORE COMPETITIVE. A LARGE .65-.69, LARGE .63-.67, MEDIUMS 50-.56.

New York & Phila. Frozen Egg Report

Friday, May 27, 1994
 The market tone was fully steady to firm with some underlying cautiousness developing. Trading activity was light as most buyers continued to resist the higher asking prices. Raw materials were sufficient to allow further processors adequate running schedules. Floor stocks were in good balance for current dealer needs.
 WHOLESALE SELLING PRICES (CENTS PER POUND IN 30 LB. CONTAINERS) TRUCKLOTS LTL (MIN. 25 CONT.) RANGE MOSTLY RANGE WHOLE 48-51 48-49 51-58 BLEND (J) - 59-70 WHITES 42-45 42-43 45-50 SUGARED YOLKS (MIN 43% SOLIDS) 58-61 58-59 61-69 SALTED YOLKS (MIN 43% SOLIDS) 55-58 55-56 58-67 (J) - WHOLE PLUS YOLK PLUS SWEETENER, GENERALLY 28-32% EGG SOLIDS.

National Grain Market

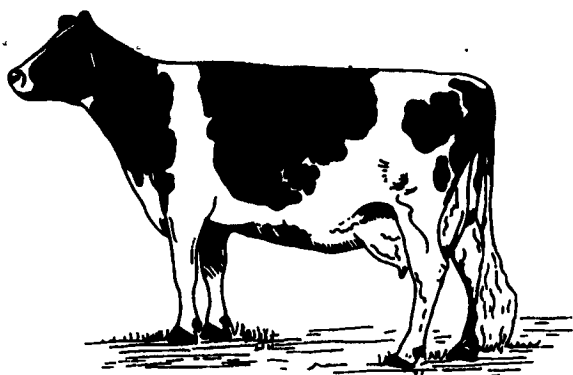
St. Joseph, Mo.
 Wednesday, June 1, 1994
 DAILY NATIONAL GRAIN SUMMARY GRAIN AND SOYBEAN PRICES FINISHED MIXED, WEDNESDAY, WITH WEATHER OUTLOOK AND EXPORTS THE ON GOING INFLUENCES. WHEAT MIXED. CORN 1 TO 2 CENTS HIGHER. SORGHUM 2 TO 4 CENTS HIGHER. SOYBEANS 1 TO 6 CENTS LOWER. WHEAT PRICES WERE UNDER PRESSURE FROM IMPROVED SOFT RED WINTER WHEAT CON- DITION AND

APPROACHING HARVEST. WINTER WHEAT HARVEST HAS MOVED NORTH INTO OKLAHOMA AND SOUTHERN KANSAS BUT QUALITY HAS DECLINED. EXPORT DEMAND REMAINS VERY LIGHT FOR WHEAT THIS WEEK. SLIGHT GAINS IN CORN PRICES WERE DUE TO FORECASTS FOR HOT, DRY WEATHER CONDITIONS IN MIDWEST AREAS, PARTICULARLY IN THE EASTERN CORN BELT REGION. SLOW EXPORT SALES LIMITED GAINS IN CORN PRICES. CORN PLANTING IS 98 PERCENT COMPLETE IN THE 17 MAJOR PRODUCING STATES. SOYBEAN PRICES WERE PRESSURED BY OVERNIGHT RAINFALL IN AREAS OF THE MIDWEST BUT CONFLICTING FORECASTS KEEP TRADING ERRATIC. LIGHT EXPORT DEMAND TODAY FROM MEXICO ADDED LIGHT SUPPORT TO PRICES. SOYBEANS PLANTED ARE OVER 80 PERCENT COMPLETE AND ABOUT 30 PERCENT AHEAD OF THE AVERAGE.
 EXPORT NEWS: MEXICO BOUGHT 45,000 TONNES U.S. SOYBEANS FOR JUNE THRU LATE JULY SHIPMENT. CCC BOUGHT 2,850 TONNES REFINED VEGETABLE OIL FOR BOSNIA-HERZEGOVINA.
 DATE CHANGE YEAR AGO TRUCK BIDS: 06/01/94 05/31/94 06/02/93 WHEAT: KANSAS CITY 3.46-3.49 DN 1-UP 1 3.18-3.20 MINNEAPOLIS 4.38 3/4 UP 5 1/2 3.74 3/4 PORTLAND 3.62-3.63 DN 10-11 3.48-3.49 ST. LOUIS 3.20-3.21 UP 4-2 2.83-2.87.
 CORN, U.S. NO. 2 YELLOW: KANSAS CITY 2.92-2.96 UP 2.19-2.20 MINNEAPOLIS 2.71 UP 2 1/4 2.15 1/4 SO. IOWA 2.76-2.79 UP 2.19-2.23 OMAHA 2.76-2.80 UP 2-1 2.08-2.09.
 SOYBEANS, NO. 1 YELLOW: KANSAS CITY 7.09-7.11 DN 4-3 5.79-5.83 MINNEAPOLIS 6.88 1/2 DN 1 1/2 5.79 1/2 SO. IOWA 6.96-7.02 DN 6-1 5.85-5.91 C. ILL. PROCESSORS 7.04 3/4-7.13 3/4 DN 3 1/4-1 5.86-5.96 3/4.

*TRUCK BIDS FOR KANSAS CITY, US NO.
 1 HARD RED WINTER WHEAT, ORDINARY PROTEIN. MINNEAPOLIS, US NO. 1 DARK NORTHERN SPRING WHEAT, 14% PROTEIN. PORTLAND, NO. 1 SOFT WHITE WHEAT, ST. LOUIS, NO. 2 SOFT RED WINTER WHEAT.
 FUTURES CLOSE: KANSAS CITY (JULY) WHEAT 3.32 1/2 UP 1/4 2.89 1/2 MINNEAPOLIS (JULY) WHEAT 3.38 3/4 DN 4 1/2 2.94 3/4 CHICAGO (JULY) WHEAT 3.29 UP 1 1/2 2.84 1/2 (JULY) CORN 2.81 UP 2 1/4 2.19 1/4 (JULY) SOYBEANS 7.00 1/2 DN 1/2 5.88 3/4 (AUG) SOYBEANS 6.99 3/4 DN 1.
 EXPORT: BARGE OR RAIL, PORT OF NEW ORLEANS OR NORTH TEXAS GULF. NO. 1 HARD RED WINTER WHEAT ORDINARY PROTEIN 3.74 1/2 UP 1/4 3.44 1/2 NO. 2 SOFT RED WINTER WHEAT 3.41-3.42 1/2 UP 2 1/2-NC 3.14 1/2-3.24 1/2 NO. 2 YELLOW CORN 2.94-2.96 UP 2 3/4-2 2.41-2.42 NO. 2 YELLOW SORGHUM RAIL 5.02 DN 17 BARGE 5.18 UP 2 4.06-4.08 NO. 2 YELLOW SOYBEANS 7.21-7.22 1/2 DN 2-2 1/2 6.11 3/4-6.13 BIRD.
 THIS REPORT A SERVICE OF U.S. DEPARTMENT OF AGRICULTURE, LIVESTOCK AND GRAIN MARKET NEWS, ST. JOSEPH, MISSOURI.



**GRAZING?
 BST?
 HIGH LACTATING HERD?
 AVERAGE HERD?**



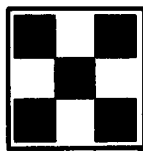
**HIGH BROS. HAS A
 PRODUCT TO MEET ALL
 COW REQUIREMENTS**

-  **Super EXT®**
-  **Ultimate EXT®**
-  **Flaked Feed**
-  **Many Other Purina Feeds**

**Give us a call today and ask for
 Doug, Rick or Phil**

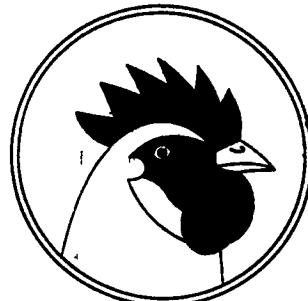
HIGH BROS.

441 Centerville Road
 Gordonville, PA 17529
 Phone 717-354-0301



RISSER'S POULTRY INC.

P.O. BOX 52 • LITITZ, PA



*Buyers and Haulers
 of Leghorn, Medium,
 and Heavy Fowl.*

*Over 60 years of
 prompt payment
 and dependable
 service.*

*Now using carts for
 the most efficient
 means of moving
 spent fowl.*

**Tel. 717-626-5466
 FAX 717-627-3599**

Farm Crest Feeds

WANTED

**NEW 1000-2000 HEAD
 HOG FINISHING FLOORS**

AREAS OF INTEREST:

**York, Lancaster, Lebanon, Berks
 Dauphin, Franklin Co., PA
 Washington Co., MD**

OFFER:

- Clean PIC - Feeder Pigs
- Competitive Contract
- Competent Service Personnel
- Jan. 1995 - Start Dates

**CALL IN PA 1-800-432-3040
 Out of State 717-626-0331
 Ask for Dave Heckel**