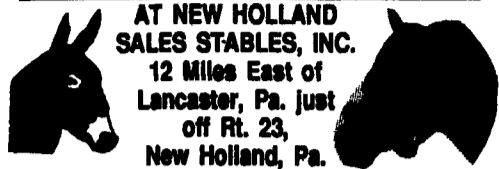


**Public Auction Register**

Closing Date Monday 5:00 P.M.  
of each week's publication

**Dairy and Livestock Sales**

**300-400 HEAD  
SPECIAL HORSE SALE  
WORK HORSES  
MULES  
DRIVING HORSES  
FRIDAY, JUNE 10, 1994**



AT NEW HOLLAND  
SALES STABLES, INC.  
12 Miles East of  
Lancaster, Pa. just  
off Rt. 23,  
New Holland, Pa.

Horse Sale 7:00 P.M.  
Horses Hitched At 12:00 Noon  
Note: Tack Sale 6:00 P.M.  
Wagons, Sleighs, Harness, Etc.

1 Load Work Horses.  
Plus Several Matched Teams.  
Consigned by Ward Wright.

Work Horses- 1 Load Each From Shy Tipton,  
Billy Meadows And Earl Stoltzfus.  
Plus Many More By Sale Time.

Driving Horses - Elam B. Stoltzfus, Christ Z.  
Stoltzfus, Jonas Beller, Ben K. Stoltzfus,  
Reuben G. Stoltzfus, Jerome Wanner &  
Clayton Waterberry.

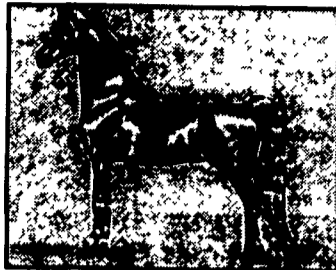
For more information call:

Norman or David Kolb- 61L  
717-354-4341- Barn - Home- 717-397-5538  
FAX# 717-355-0706

Next Horse Sale - July 1, 1994 - 7:00 P.M.

**MEL'S STABLE**

S  
E  
L  
E  
C  
T  
E  
D



C  
O  
N  
S  
I  
G  
N  
M  
E  
N  
T

**WORK HORSE, MULE &  
DRIVING HORSE SALE**

**SAT., JUNE 18 - 10:30 A.M.**

HORSES HITCHED AT 8:30 A.M. SHARP  
SALE HELD AT 834 WALLACE RD., NEW HOLLAND, PA  
DIRECTIONS: FROM RT. 23 IN NEW HOLLAND, GO SOUTH ON  
BRIMMER AVE., GO 2 MILES SOUTH ON NEW HOLLAND ROAD TO  
HILL RD. TURN LEFT ON HILL RD. PROCEED 1.2 MILES TO SALE  
ON THE LEFT. FROM RT. 340 EAST OF INTERCOURSE TAKE NEW  
HOLLAND RD., 2.5 MILES TO HILL RD., RIGHT ON HILL RD. TO SALE  
ON LEFT.

APPROX. 18 HEAD OF WORK HORSES  
APPROX. 55 HEAD OF STANDARD BRED HORSES  
APPROX. 55 HEAD OF SADDLEBRED HORSES

- 1 Load Driving Horses For Elam Stoltzfus
- 1 Load Driving Horses For Jacob Zook
- 1 Load Standardbred Horses From Canada
- 1 Load Horses For Mel Hoover

PLUS MANY MORE HAND PICKED TOP QUALITY HORSES!! DON'T  
MISS THIS SALE!!! IF YOU ARE IN NEED OF A HORSE, COME AND  
FIND THAT SPECIAL HORSE.  
Come and drive them yourself. Barn open on Fri. June 3 from 9:00  
A.M. till dark.

**MEL'S STABLE**  
OWNER - MEL HOOVER  
PHONE - HOME - 717-354-8397  
BARN - 717-354-6431  
AUCTION - MEL HOOVER AU006111L  
NOT RESPONSIBLE FOR ACCIDENTS  
FOOD ON PREMISES

SAT. OCT. 15 - Arnold Hog  
Production Sale, Lebanon  
Area Fairgrounds, Leba-  
non, Pa. Harry H. Bach-  
man, auct.

SAT., OCT. 22 - 10AM,  
Mel's Stable Selected Con-  
signments Horse Sale.  
Located At 834 Wallace  
Rd., New Holland, Pa.

From Rt. 23 in New Hol-  
land, Go South On Brim-  
mer Ave. Go 2 Miles South  
On New Holland Road To  
Hill Rd. Turn Left On Hill  
Rd. Proceed 1.2 Miles To  
Sale On The Left. From Rt.  
340 East Of Intercourse  
Take New Holland Rt. 2.5  
Miles to Hill Rd., Right On

Hill Rd. to Sale On Left. Mel  
Hoover, Auctioneer.

WED. OCT. 26 - 11AM,  
Sale. Judging 9AM. Annual  
Dairy Show & Sale.  
Located New Holland  
Sales Stables Inc., 101 W.  
Fulton St., New Holland,  
Pa. Norman Or David Kolb,  
Aucts.

FRI. OCT. 28 - 1:30PM,  
State Graded Feeder Pig  
Sale. Located At Carlisle  
Livestock Market, Inc. Exit  
12 South Off I-81. Left Onto  
Alexander Spring Road.  
(717) 249-4511.

**NOVEMBER**

FRI. NOV. 4 - 7PM, Horse  
Sale. Located New Holland  
Sales Stables Inc., 101 W.  
Fulton St., New Holland,  
Pa. Norman Or David Kolb,  
Aucts.

SAT. NOV. 5- Real Estate,  
Household goods, antique  
sand tools. 111 Ewell  
Road, East Earl, 1/2 Mile  
East of Blue Ball. Owner:  
Elizabeth Martin. Nevin  
Martin & Sons, aucts.

**Green Dragon  
Livestock Sales**

Located 1 Mi. N. On  
North State St., Ephrata

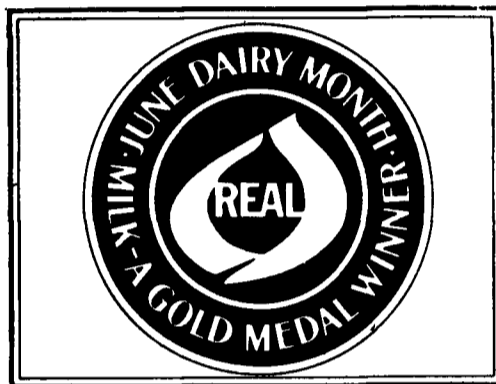


**Sale Every Friday**

11:00 A.M. Beef  
7:00 P.M. Small Animal Sale  
200-300 Stocker & Feeders Every Friday.  
Regular Shippers Of Northern Cattle

**Walter H. Risser,**  
Prop.

Home 717-838-4318  
Office 717-733-2444



100 REGISTERED &  
GRADE HOLSTEINS



QUALITY

**EVENING SALE**

FRIDAY, JUNE 10 \* 7:30 P.M.  
INTERCOURSE, PA.

**\*\*FEATURING A MILKING HERD DISPERSAL FOR  
CHESTNUT RUN HOLSTEINS\*\***

Many Summer & Fall Cows In The Herd Plus 14 Heifers In Top Condition!  
\* Plus Our Usual Selection Of High Quality Young Fresh Cows & Heavy Springers!  
Chestnut Run Holsteins Is A High Quality Grade Herd. Over 40 Years Established, The Herd Runs 3.9% Fat &  
3.1% Protein! Somatic Cell Count Less Than 180,000. All AI Sired, These Cattle Will Make New Owners  
Very Happy! Thirty-Seven Cows In The Herd & Fourteen Heifers!

**BUYERS WILL BE HAPPY WITH THESE OFFERINGS & MORE!**

- \* A VG-85 Secret Sells Fresh With PTA +2154M +75F +74P +\$266P & 3-04 32,740M 1008F 1086P! Dam Is VG-86 With 29,420M 1156F & Grdam Is VG-88!
- \* A GP-84 Henry Mat Sister To Leadman Sells With PTA +1593M +52P & Springing To Target After Making 2-01 26,730M 761F 844P!
- \* A GP-81 Leadman Dtr Sells Due 7/25 To Liberty After Making 2-00 263D 15,261M 3.8% 580F! Dam Is GP-82 With 27,992M 1032F & Grdam Is Ex-90 With 29,170M 1043F. 3rd Dam Is 2E-93-GMD-Dom With 33,020M 1250F!
- \* A Fancy Ambrose Dtr Sells Springing To Leadman & Backed By 4 Ex Dams All With 1000F & Records To 30,000M!
- \* A Fresh Tong Dtr Sells Backed By Ex-90 Dam With 37,740M 3.4% 1286F & Grdam Is 3E-91-Gmd-Dom With 28,620M 928F!
- \* A GP-81 Leadman Sells Fresh With 2-00 22,099M 3.4% 743F. Dam Is 2E-90 With 36,668M 3.6% 1313F 3.2% 1158P! Grdam Is 2E-93-GMD With 34,060M 1264F 1183P!
- \* A Special Leadman Sells Springing To Lance & Backed By A VG-86 Dam With 29,550M 4.1% 1224F & Grdam GP-84 With 1029F.
- \* A Fresh Cubby Sells From A VG-87 Red Dam With 24,330M 3.7% 891F & Grdam Is 2E-90 With 23,170M 796F!
- \* A Fresh Vance Dtr Sells From A VG-87 Dam With 32,040M 1162F & Grdam VG-89-GMD With 25,290M 910F! A Great Family! Keystone Bred!
- \* A Leadman Sells Fresh With PTA +59F +54P! Dam VG-86 With 21,980M 4.4% 964F 3.5% 760P! Super Udder!

\*\*\* A Very Special Selection Of Young Fancy Canadian Cows Sell Including Several Aerostar's, Lincoln's, Starbuck's, Counselor's, Jethro's  
\* A Red Triple Threat Dtr Sells Due 8/94 To A Blackstar Son!

**\*\*\*SERVICE AGE BULLS SELL\*\*\***

- \* An Aerostar Son Sells Born 5/93 From A Dam With 2-01 365D 26,474M 3.6% 959F 3.2% 855P & Grdam Is VG-87 Chairman!
- \* A Chief Mark Son Born 6/93 Sells From A Dam With 31,248M 3.3% 1064F 3.3% 1021P! Grdam Is VG-88 With 31,017M 1045F & 1022P! Great Family!
- \* Cattle Will Be Tested For Immediate Interstate Shipment, Pregnancy Checked & Inoculated Against Shipping Fever.

\*Trucking Available • Lunch Available\*

Sale Held At The Ben K. Stoltzfus Farm. First Farm East Of Intercourse, Pa. On Route 340.

SALE MANAGED BY:

**Stonehurst Farm**

1541 Lime Valley Road  
Strasburg, PA 17579  
Telephone: Don Webb 717/687-7478

**The CATTLE EXCHANGE**

Dave Rama RD 2 Box 79 Delhi, NY 13753  
Ph 607/746-2226 Fax 607/746-2911  
AU-002463-L

June Is Dairy Month! All Of Us At Stonehurst Farm & The Cattle Exchange Want You To Know We Appreciate Your Valued Business & The Friendships We Have Made! If We Can Ever Be Of Service To You Feel Free To Call At Anytime!

**MOSE & ANNIE SMOKER  
& FAMILY  
HOLSTEIN HERD  
DISPERSAL**



To Be Held At Smoketown Quality  
Dairy Sales, Smoketown, PA. Rt. 340.

**Thursday, June 9, 1994 - 8 P.M. D.S.T.**

Fresh Cows And Springers, Cows Due Aug., Sept., & Oct. Herd  
Bred To Chairman Grd. Son- Dam Secret Dtr. Some Open Heifers.  
Also From Bill Teets- New Jersey. Fancy Reg. Fresh Heifers And A  
Registered Bull.

- 2 Reg. Fond Matt Grd. Dtrs.
- 1- Born 12-20-91- Fancy Heifer- Fresh 5-20-94.  
Dam C. Roycedale Advantage-ET.  
2-4 361 19,970 3.6 723 3.1 611.  
3-5 312 21,720 619 3.2 Pro. 688.
- 1- Born 4-26-92- Fresh 5-9-94.  
Dam- Elevation Marlin- Milks 100 Lb.  
Next Dam- 19,970 3.7 748 3.4 676.  
Reg. C Roycedale Altair- ET- Born 1-31-92- Fresh 5-4-94-  
70 Lbs.  
Dam- C Roycedale Advantage-ET.  
2-8 345 16,490 4.0 662 3.3 545.  
3-9 365 20,550 3.6 742 3.3 674.  
Next Dam Over 20,000-4.3 Avg. Test.
- One Load Of Fancy Reg & Grade 2 & 3 Yr. Olds Out Of  
Susquehanna Co. And Bradford Co. Cows Milking  
70 To 92 Lbs.
- 2- Fancy Reg. Conquest Dtrs. 2 & 3 Yrs. Old.  
1 Reg. 3 Yr. Old Kingsway Leader.  
Reg. 3 Yr. Old Astro Jet- Due To Boutonniere.  
Dam Triple Threat 2 Yr. 22,000, 3 Yr. 27,000.  
One Load Of 2 & 3 Yr. Olds From Dave King Milking  
80-85 Lbs.

Reg. Bull- Born 7-6-92- Proven.  
Sire Hanoverhill Starbuck Grd. Son.  
Dam C Hanoverhill Chaplain ET- VG 85.  
2 Records Over 19,000 4.0T 858 3.5 Pro. 611.  
Next Dam Up To 30,980.  
His Half Sister Made 1100 Lbs. Fat As 3 Yr. Old.

**Come Spend A Few Hours At  
Cowtown In Smoketown.**

Sale Managed By

**SMOKETOWN QUALITY DAIRY SALES**

Gordon & Helen Fritz  
717-393-0930