

SURPLUS AUCTION**OWNERS VACATING
WAREHOUSE EVERYTHING
GOES!****THURSDAY EVENING, JUNE 9, 1994
AT 6:00 P.M.**

LOCATED at 5351 Jaycee Ave., Lower Paxton Twp., Take Route 22 Near Inn 22 Turn North on Jaycee Ave. Look for signs.

FORKLIFTS/PALLET**RACKING/EQUIPMENT/INVENTORY**

Yale Propane 2000 Lb. Cap Solid Tire Forklift, Crown Model DT-1100 Elec. 1500 Lb. Forklift, 20 Sections H.D. Pallet Racking, 5 Weatherguard P/Up Mini Truck tool Boxes, Black & Decker cut off saw, 500 Square Norandex alum/vinyl siding in asst. colors, 1200' 3/4 water pipe, 900' 1" water pipe, 20 Reproduction Antique Street Lamps, 100' O Sq. Ft. ceramic tile, marble glass/hearths, 2 Bard roof top condensers (new), Fypon door/window trims, entrance/interior doors, 8 temp elec. services, table saw, louvers, toilets, zero clearance corner fireplace (new), Moldings & MORE!

MODEL HOME FURNITURE/APPLIANCES/AUTOS

1987 Olds Cutlass, 1979 Ford Granada, New GE gas range, Hotpoint refrigerator, 2 trash compactors, 2 dishwashers, 9 pc dining room suite, china closet, end tables, 9 office desks, 10 four drawer file cabinets, Swintec copier, Canon PC copier, conference table, typewriters and MORE.

Auction for TRIPLE CROWN CORP.

NOTE: INSPECTION DAY OF AUCTION ONLY 1 PM TO 6 PM. REMOVAL BY 6/14/94 NO OUT OF STATE CHECKS.

**3rd ANNUAL PUBLIC
BENEFIT AUCTION****SATURDAY, JUNE 11, 1994 • 8:30 AM****LIGHTHOUSE REHABILITATION CENTER**1700 Division Hwy., New Holland, PA
(Rt 322) Approx 2 mi West of Blue Ball
and 5 mi East of Ephrata, PA

30"x50" 3D picture by Lorraine Reiff; Approx 100 hand quilted quilts and wall hangings; Antique Session Clock; 10 1/2" Wedgewood plates, (13 original colonies); Winross trucks; Silver coins & bars; Gift Certificates; 10'x12' Quaker Style Yard Shed; Wooden Swing Sets; Picnic Tables; New Express Wagon; Tools; Bookcase & Other Furniture and many more items coming in.

Craft stands open 8:30 AM till noon. Sale to begin at 8:30, 3D picture at 12 Noon followed by Quilts, Winross trucks at 2PM.

Lots of Lanc. Co. food. Come and enjoy the day with friends and give Lighthouse your generous support as they continue to rehabilitate the emotionally handicapped.

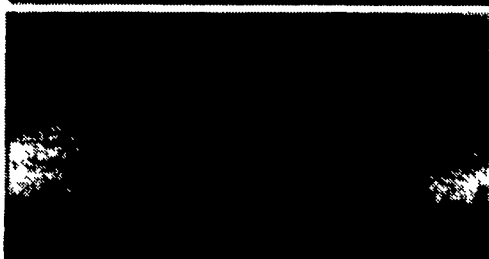
Sale under tent. Bring your chairs. Quilt will be displayed Friday, 4-9 PM. Receiving goods all day Friday.

No large appliances or junk "Please". Volunteer help needed including auctioneers. For more information call 445-4669 or 354-0533.

Terms by Sale Committee
Local Auctioneers**ADVANCE NOTICE****OF
LARGE SECURED
CREDITORS AUCTIONS
OF****ACM MECHANICAL CONTRACTORS
OF
SHORT GAP, WEST VIRGINIA**
(Located Between Keyser, WVa. and Cumberland, Md.)
ON**WEDNESDAY, JUNE 22, 1994****AUCTION NO 1** Beginning at 9:00 AM at the facilities on Plum Run Road: (21) Trucks, Backhoes, Forklift, Office Trailers, Large Assortment of Sheet Metal Shop Equipment, (19) Welders, Large Selection of Power Tools, Stock Steel and Various Metals, Fittings and other Hardware.**AUCTION NO 2** Beginning at 5:00 PM at the Facilities on Shady Lane Road: Office Furniture and Equipment, Large Assortment of Fittings and other Supplies and Materials Used in the Mechanical Contracting Business.

Please contact the AUCTION COMPANY for a full color and descriptive brochure on this auction at (301) 739-0538 or 1-800-310-2844 (MD)

WVa #423

**Roger Schlossberg
SECURED CREDITOR****PUBLIC AUCTION****VALUABLE REAL ESTATE
106 ACRE LANCASTER CO. FARM
PERSONAL PROPERTY &
ANTIQUES****SAT., JULY 16
9 A.M.****LOCATION: 140 Weaver Road, Manheim. From Lancaster take Rt. 283 to the Manheim/Mt. Joy exit. Turn right onto Mt. Joy Rd., approx. 1 1/2 miles to Weaver Rd. and Auction on right. Rapho Twp., Lancaster County.**

2 1/2 Sty. Log w/siding, 5 bdrm. house w/over 3790 sq. ft. limestone & frame bank barn, tobacco barn, garage. Over 100 Acres tillable limestone soil. Over 3860 ft. road frontage. Exceptional farm, only 1 1/2 miles off Rt. 283. Easy access to Hershey & Harrisburg. For picture brochure & land plotting, complete listing & details, Call Auctioneers 717-733-1006. Real Estate Sold at 2 PM.

**Harry C. Rohrer Trust
J. David Young, Jr. Esq.**Auction Conducted By:
Randal V. Kline, Lloyd Kreider
Roy Good, Jr., Auctioneers
Lic. #AU499L #717-733-1006**Sale
Reports****HERR SALE**

A Public Auction of household goods and antiques was held May 28 by Harold C. and Bonnie W. Herr, 344 Rosedale Road, Kirkwood, Lanc. Co., Pa. There were 210 registered bidders attending the sale.

Some prices were: washstand with towel rack \$225, maple hutch \$150, maple dining room table with 6 chairs \$175, large home cider press \$325, Wurlitzer piano and bench \$825, 70-piece Bittersweet pattern Stangl ware dish set \$225, Winchester model 37 410 shotgun \$135, Remington model 31 pump \$200, British Savage 303 rifle \$270, Echo chain saw \$150, Winco 12,000 watt generator \$150, pull-type sprayer \$320, 3 pt. snow blade \$160, 12 ft. aluminum boat \$325, 1965 Ford Fairlane \$500 and 14 h.p. Kubota B #6100 diesel tractor \$2250.

Lloyd Kreider, Randal Kline and Roy Good were the auctioneers.
**SHELLENBERGER
ESTATE SALE**

A Public Auction of antiques was held May 23 for the estate of Mary J. Shellenberger, 85 South Main St., Dover, Pa.

Some prices were: Dutch cupboard w/ blind doord \$3200, crocks \$5 to \$15 ea., 2 pic safes \$70 & \$80, 2 pc. oak bedroom suite \$650, Empire chest of drawers \$200 and Mission oak desk \$150.

Renzel's Auction Service conducted the sale.

ABSOLUTE AUCTION**Complete dispersal of Cabinetmaker
and Woodworking Shop
PLUS Antique Furniture****SATURDAY, JUNE 11, 1994****At 10:30 A.M.****to be held on location at
CLIFTON INDUSTRIAL CENTER
MILL STREET
CLIFTON HEIGHTS, PA
SHOP ITEMS**

12" planer, Powermatic Model 10Q; 36" American Saw Co. bandsaw; Rockwell Delta Shaper 43340; two Sears Craftsman table saws, 10", 1 Model 113-27520, to be sold as one; 10" Craftsman radial arm saw; Walker-Turner 6" jointer; Dewalt 10" powermitre box; Craftsman 12" bandsaw, 1 1/4 h.p. Campbell Hansfeld compressor; Rockwell Delta lathe, 11"x36", FB 4895; Walter Turner 1" drill press; 15 1/2" Sears drill press, model 113.21310; Sears drill press, 103-23620; Rockwell 1x42 sander; Sears bench grinder, model 39719580; Sears 6x48 bench sander, model 113.22541; kerosene heater; bench tools; carpentry tools; jigs and sanders; Shop Craft 10" radial saw, model SC-5100 Type I; Cincinnati dust collector, model 12863B; Rockwell band saw, Model 14; Craftsman industrial router; 1/3 h.p. bench grinder; 20 furniture clamps; Rockwell vertical sander; Craftsman shop vacuum; Ashina drill press on stand; Walker Turner jigsaw; Kellogg American air compressor; maple work tables; steel shelving; large quantity of bolts, nuts, and screws; 2 Speedomatic routers; candy store showcase; bench grinder and buffer; pedestal shop fan; quantity of walnut and seasoned lumber; one mahogany plank, 13"x35"

ANTIQUESEmpire game table; fancy French cabinet on base; Victorian chairs; mahogany cabinet with ball and claw feet; mahogany chest; Victorian frames; interior shutters; 8' Victorian peer mirror; fancy walnut Victorian sofa; old trunks; walnut rocker; old pine cradle; old tool chests; large walnut tilt-top table; Duncan Phye sofa; wicker baby coach with sled runners; Fairbanks platform scales; maple shipping desk; and much, much more!!
DIRECTIONS: From Springfield Avenue in Clifton, take Sycamore Street north, right on Mill Street into complex.**WATCH FOR AUCTION ARROWS!****LUNCH AVAILABLE ON GROUNDS****Sale ordered by Mr. Robert Reber
and Mr. Kenneth Garrett, owners
For information, please call
GEORGE H. WILSON, AUCTIONEER
(610) 593-7290
AU-001020-L****AUCTION
HAY EQUIPMENT**

Mr. & Mrs. Andy Nikitich have sold their farm and are offering their equipment at public auction.

June 18th, 1994**10:00 A.M.****Partial Listing:** 5900 Ford tractor 800 hrs., 5610 Series II Ford tractor dual power 700 hrs. C/A, 492 New Holland haybine used one season, 853 New Holland round baler, Deere grain drill, 3 pt. 200 gallon boom sprayer, four bottom semimount plow, 1988 5 ton 16' Centerville tag-along trailer, 3 pt. post hole digger, 3 pt. seeder and fertilizer spreader, L fuel tank & pump, 16.9x38 snap on duals, auto head lock gate, six 28x48 hay covers, International front weights, 6' bush hog, two Gandy applicators, Kemlin liquid applicator, round bale feeder, 3 pt. bale carrier, misc. scrap iron, two wagons of handtools, hydraulic hoses, plumbing supplies, parts, greenhouse kit, thirty-four 6' Agbags for round bales and lots more.

Auctioneers Note: ALL EQUIPMENT HAS BEEN WELL CARED FOR AND IS SHOWROOM CLEAN.

Terms: Cash or check with bank letter of credit for sale date.

Auctioneer Joseph F. Pino (609) 769-1133

Owner Andy Nikitich (609) 935-0613

Directions: Rte. 49 to Sickler Street, Quinton (near Smicks Lumber Yard) past Wild Oaks Country Club to dead end on Maskells Mill Road turn right 1/4 mile to left on Smick Road to Frank Smith Road (signs). Not responsible for accidents or injury.