

## Philadelphia Potato & Onion

**Philadelphia, Pa.**  
**Wednesday, June 1, 1994**  
**ONIONS AND POTATOES**  
---ONIONS DRY: MARKET ABOUT STEADY US#1 OR GENERALLY GOOD QUAL AND COND UNLESS OTHERWISE STATED. NEW CROP Yellow Granex GA 50 lb sks med 8.00-9.00 50 lb ctns jbo 9.00 poor cond 1.00 Grano Type CA 50 lb sks col 8.00 jbo 7.00-8.00 mostly 7.50-8.00 rpkz sz 7.00-8.00 some 8.50 TX 50 lb sks col 9.00 ord cond 2.00 jbo 7.50-8.00 rpkz sz 8.50 White CA 50 lb sks jbo 11.00 TX 50 lb sks jbo 11.00-12.00 Red CA 25 lb sks jbo 9.50 med 6.50-7.50 TX 25 lb sks jbo fair cond 8.00 Flat Type CA 40 lb ctns jbo 14.00 med 12.00 BOAT Yellow Valencia CL 50 lb sks col fair cond 6.50 ---POTATOES: MARKET FL ROUND WHITES HIGHER, OTHERS ABOUT STEADY US#1 SZA WASHED OR BRUSHED UNLESS OTHERWISE STATED Russet Burbank ID bid 10 3-lb flmbgs non sz A 8.00-8.50 50 lb ctns 70s 17.00-19.00 mostly 18.00 fair cond 16.00-16.50 80s 16.00-18.00 one label 19.00 90s 12.00-13.50 occ 14.00 100s 9.50-10.00 mostly 10.00 few 10.50-11.00 Norkotah CD New Brunswick CD One 50 lb ctns 70s 12.50-13.00 80s 12.50-13.00 90s 10.50-11.00 100s 9.00 WA 50 lb ctns 80s 15.00 90s 11.50 15.50 100s 9.50 WI 50 lb ctns 70s 15.00 80s 15.00 90s 10.00 100s 9.00 Round White CD Prince Edward Island CD One 50 lb sks 7.00 NEW CROP Round Red AL 50 lb sks 10.00-11.00 sz B 16.00-16.50 few 17.00 AZ 50 lb ctns sz B 16.50 CA 50 lb ctns 14.00 sz B 19.00 50 lb sks 12.50 FL 50 lb sks 10.50-12.00 few high as 14.00 sz B 15.00-16.00 TX 50 lb ctns 14.00-14.50 Round White FL 50 lb sks 8.50-10.00 mostly 9.50-10.00 sz B 9.00-10.00.

## Central U.S. Carlot

**Central U.S. Carlot**  
**Pork Report**  
**Wednesday, June 1, 1994**  
Report supplied by USDA  
CENTRAL U.S. CARLOT PORK REPORT FOB OMAHA BASIS INCLUDES MAJOR PRODUCTION AREAS IN MIDWEST AS OF 3 P.M. COMPARED TUESDAY'S 3:00 P.M. CLOSE: FRESH LOINS MOSTLY STEADY; BUTTS 3.00 LOWER; SPARERIBS 5.00 LOWER; SKND. HAMS 17-20 LBS. STEADY, 20-26 LBS. STEADY TO 2.00 LOWER; SDLS. BELLIES 1.00 LOWER. TRADING SLOW TO MODERATE, WITH LIGHT TO MODERATE DEMAND AND OFFERINGS  
58.0 LOADS PORK CUTS  
53.0 LOADS TRIM/PROCESS PORK/  
PORK CUTS  
LOINS, REGULAR, FRESH  
14-18 LBS., \* 7.5 LOADS, RANGE

98.00-109.00, WGHTD. AVG. 106.87.  
1/4" TRIM 14-18 LBS., 5.5 LOADS, RANGE 114.00-128.00, WGHTD. AVG. 125.36.  
1/2" TRM/LESS 14-18 LBS., 2.0 LOADS, RANGE 135.00, WGHTD. AVG. 135.00.  
18-22 LBS. \*, 1.0 LOADS, RANGE 103.00, WGHTD. AVG. 103.00.  
1/2" TRIM 18-22 LBS., 1.0 LOADS, RANGE 124.00, WGHTD. AVG. 124.00.  
COMBOS 22 LBS. AND UP, 1.0 LOADS, RANGE 73.00, WGHTD. AVG. 73.00  
LOIN, BNLS. CNTR CUT  
5-9 LBS. STRAP-OFF, 2.5 LOADS, RANGE 229.00, WGHTD. AVG. 229.00.  
BNLS. SIRLOIN  
75-10 LB., RANGE 155.00-163.00, WGHTD. AVG. 159.00 D.  
TENDERLOIN 1.25 LBS. AND DOWN RANGE 322.00, WGHTD. AVG. 322.00 D.  
PICNIC, FRESH  
SMKR TRM, RS, COMBO  
RANGE 37.00, WGHTD. AVG. 37.00 D)  
BOSTON BUTT  
4-8 LBS., 3.5 LOADS, RANGE 67.00-73.00, WGHTD. AVG. 70.71  
1/2" TRIM 4-8 LBS., 3.5 LOADS, RANGE 85.00-91.00, WGHTD. AVG. 88.71.  
SPARERIB, FRESH  
1.5-3.5 LBS., 5.0 LOADS, RANGE 110.00-125.00, WGHTD. AVG. 120.00 .  
3.5-5.5 LBS., 0.5 LOADS, RANGE 96.00, WGHTD. AVG. 96.00.  
SPARERIB, FROZEN  
3.5-5.5 LBS., 3.0 LOADS, RANGE 90.00, WGHTD. AVG. 90.00.  
HAM, SKINNED, SELECTED  
FRESH 14-17 LBS., RANGE 56.00, WGHTD. AVG. 56.00 D.  
FRESH 17-20 LBS., 5.0 LOADS, RANGE 51.00, WGHTD. AVG. 51.00.  
FRESH 20-26 LBS., 10.0 LOADS, RANGE 50.00-55.00, WGHTD. AVG. 52.40.  
HAM, SKINNED, COMMODITY  
17-20 LBS., RANGE 51.00, WGHTD. AVG. 51.00 E.  
FRESH 20-26 LBS., 1.0 LOADS, RANGE 50.00, WGHTD. AVG. 50.00.  
BELLY, SDLS, SKIN-ON, FRESH  
FRESH 10-12 LBS., 1.0 LOADS, RANGE 34.50, WGHTD. AVG. 34.50.  
FRESH 12-14 LBS., 4.0 LOADS, RANGE 37.50-38.00, WGHTD. AVG. 37.75.  
FRESH 14-16 LBS., 4.0 LOADS, RANGE 37.50-38.00, WGHTD. AVG. 37.75.  
FRESH 16-18 LBS., 6.0 LOADS, RANGE 34.50-35.00, WGHTD. AVG. 34.67.  
FRESH 18-20 LBS., RANGE 31.00-33.00, WGHTD. AVG. 32.07 A.  
FRESH 20-25 LBS., 3.0 LOADS, RANGE 29.00, WGHTD. AVG. 29.00.  
PORK TRIMMINGS/  
BONELESS PROCESSING PORK  
(CHEMICAL LEAN)  
COMBO 42% FRESH, 10.0 LOADS,

RANGE 22.00-24.00, WGHTD. AVG. 23.75.  
BOXED 42% FROZEN, 1.0 LOADS, RANGE 30.00, WGHTD. AVG. 30.00.  
COMBO 72% FRESH, 17.0 LOADS, RANGE 40.00-41.00, WGHTD. AVG. 40.76.  
PICNIC CUSHION MEAT  
BOXED 92% FROZEN, RANGE 90.00, WGHTD. AVG. 90.00 E.  
BONELESS PICNIC MEAT  
COMBO 72% FRESH, 19.5 LOAD, RANGE 41.00-44.00, WGHTD. AVG. 41.21.  
SHANK MEAT  
FROZEN, RANGE 59.00, WGHTD. AVG. 59.00 D.  
SKINNED JOWLS  
COMBO FRESH, 5.5 LOADS, RANGE 23.00-24.00, WGHTD. AVG. 23.09.  
NOTE! (\*) REFLECTS 1/2" OR 1/4" TRIMMED PRODUCT BROUGHT BACK TO A REGULAR COMMODITY BASIS.  
ABCDE AFTER QUOTES REPRESENTS DAYS SINCE LAST ACTUAL MARKET TEST. QUOTES ARE DROPPED AFTER 5 DAYS OF NO TEST OR BEFORE IF THEY NO LONGER REFLECT CURRENT MARKET CONDITIONS.  
PORK CARCASS CUTOUT  
WEDNESDAY, JUNE 1, 1994  
ESTIMATED GROSS CUTOUT VALUES OF A 175 LB. HOG CARCASS BASED ON USDA CUTTING YIELD TESTS AND CARLOT PRICES. WEDNESDAY'S CARCASS GRADES AND PRICES PER CWT.:  
US#1 58.79, CHANGE FROM TUESDAY'S VALUE -0.24; US#2 56.97, CHANGE FROM TUESDAY'S VALUE -0.22; US#3 55.15, CHANGE FROM TUESDAY'S VALUE -0.21; US#4 53.33, CHANGE FROM TUESDAY'S VALUE -0.20.  
TODAY'S CALCULATIONS FOR USA#2 175 LB. PORK CARCASS:  
SKINNED HAMS, 14-20 LBS., 21.01% OF CARCASS, 50.50 FOB VALUE, 0.50 CHANGE FROM TUES.; LOINS, 1/2" TRIM, 14-22 LBS., 20.33% OF CARCASS, 120.00 FOB VALUE.  
BELLIES, SDLS, 12-14 LBS., 13.90% OF CARCASS, 37.75 FOB VALUE; SPARERIBS, 3.5DN LBS., 3.03% OF CARCASS, 125.00 FOB VALUE.  
PICNICS, 8-12 LBS., 10.31% OF CARCASS, 28.00 FOB VALUE, -1.00 CHANGE FROM TUES.; BUTTS, 1/2" TRIM, 4-8 LBS., 7.25% OF CARCASS, 89.00 FOB VALUE, -3.00 CHANGE FROM TUES.  
JOWL, 2.85% OF CARCASS, 28.00

## Estimated Daily Livestock Slaughter

Under Federal Inspection  
June 1, 1994

	CATTLE	CALVES	HOGS	SHEEP
WEDNESDAY (EST)	124,000	5,000	337,000	17,000
WEEK AGO (EST)	123,000	4,000	338,000	19,000
YEAR AGO (EST)	125,000	4,000	339,000	22,000
WEEK TO DATE (EST)	249,000	10,000	676,000	35,000
SAME PD LT WK (EST)	371,000	13,000	963,000	54,000
SAME PD LT YR (ACT)	252,000	9,000	669,000	45,000
PREVIOUS DAY ESTIMATED TUESDAY STEER AND HEIFER	100,000			
AND BULL	23,000			

\*\*\*REVISION TUESDAY CATTLE SLAUGHTER...123,000.  
\*\*\*REVISION TUESDAY HOG SLAUGHTER...332,000.  
FOB VALUE; NECKBONES, 1.52% OF CARCASS, 9.00 FOB VALUE.  
FEET, 1.05% OF CARCASS, 14.00 FOB VALUE; TAILS, 0.22% OF CARCASS, FOB VALUE 21.00.  
TRIM 72%, 2.19% OF CARCASS, 40.75 FOB VALUE -0.25 CHANGE: FROM TUES.; LARD 10.85% OF CARCASS, 14.50 FOB VALUE.  
TOTAL CARCASS 94.51%. US#2 CARCASS VALUE PER CWT. 56.97.  
NOTE: VALUE MAY CHANGE WITHOUT ADEQUATE TEST.

**Carlisle Livestock Market**  
Carlisle, Pa.  
Tuesday, May 31, 1994  
Report Supplied by Auction  
SLAUGHTER COWS: BREAKING UTILITY AND COMMERCIAL 46.00-49.75; CUTTER AND BONING UTILITY 45.50-52.25; CANNER AND LOW CUTTER 41.00-45.00; BIG MIDDLE 42.00-45.00; SHELLEY 40.50 DOWN.  
BULLS: YG#2 51.00-57.00.  
FEEDER CATTLE: FEEDER STEERS 200-400 LBS. 85.00-97.50, 450-750 LBS. 71.00-81.50; HOLSTEINS 450-750 LBS. 62.00-78.00; HOLSTEIN X 1050-1100 LBS. 53.75-56.00; FEEDER HEIFERS 200-400 LBS. 75.00-85.00, 450-750 LBS. 59.50-73.00; FEEDER BULLS 450-750 LBS. 60.00-73.00.  
CALVES: VEALERS STANDARD AND GOOD 80-140 LBS. 80.00-97.50; CALVES RETURNING TO THE FARM, STRONG DEMAND! HOLSTEIN BULLS #1 90-130 LBS. 150.00-177.50; HOLSTEIN BULLS #2 90-130 LBS. 135.00-149.00; HOLSTEIN HEIFERS #1 110-130 LBS. 175.00-197.50; BEEF X

**Dewart Livestock**  
Dewart, Pa.  
Monday, May 30, 1994  
Report Supplied by PDA  
STEERS: TOO FEW TO QUOTE.  
HEIFERS: TOO FEW TO QUOTE.  
GOOD COWS: 42.00-48.00.  
CANNERS AND CUTTERS: 35.00-42.00  
BULLS: 50.00-57.00.  
VEALS 90-190 LBS. NO PRICES AVAILABLE, 70-90 LBS. NO PRICES AVAILABLE.  
HOGS: 38.00-42.75  
SOWS: 30.00-39.00.  
FEEDER PIGS: 12.00-31.00 PER HEAD

# ATTENTION!!! PRODUCE & FRUIT GROWERS AND BUYERS LEBANON PRODUCE AUCTION

- ⌚ AUCTION BEGINS JULY 5, 1994
- ⌚ 3:00 P.M.
- ⌚ WHOLESALE BUYERS & SELLERS
- ⌚ 8% COMMISSION
- ⌚ MONDAY SETTLEMENT

LOCATED 3 MILES NORTH OF LEBANON  
ALONG ROUTE 72

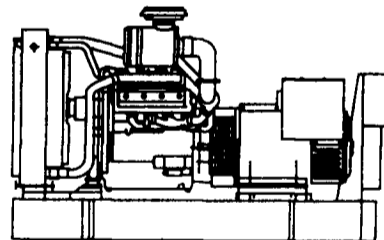
**WILMER HOOVER**  
2862 HARVEST RD.  
ELIZABETHTOWN, PA  
17022  
(717)367-8379

**PAUL N. HORST**  
1840 RT. 72 N.  
LEBANON, PA.  
17046  
(717)274-0762

Nelson L. Ebersole, Auct. #AU001307-L

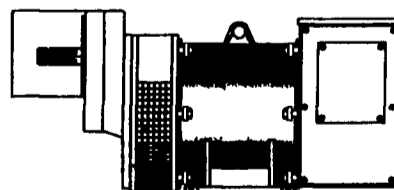
## GENERATOR SYSTEMS

### 1-800-779-8809



New & Used 5 to 2500 KW  
Diesel • Propane • Natural Gas

24 Hour Emergency Service  
Sales - Installation  
Maintenance Contracts • Rentals



10 To 150 KW 1800 RPM Brushless  
Tractor Driven Generators

**DYNA-TECH<sup>®</sup> Ind.**  
Dynamic Technologies

**DYNA-TECH INDUSTRIES**  
602 E. Evergreen Rd., Lebanon, PA 17042  
**717-274-8899 Fax 274-5334**  
Ask About Our Lightning & Surge Protection Units  
Panel Mount • Plug-In • Electric Fence Protection