

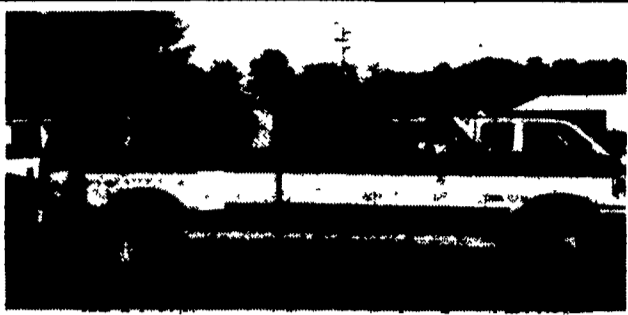


(717) 768-8225
(800) 223-KEIM

RT. 30 Lincoln Highway East
Paradise, PA 17562

YOUR TRUCK, VAN & 4x4
HEADQUARTERS

1-800-223-KEIM



1988 FORD F-350 CREW CAB DUALY 4x4
460, Auto, AC, Tilt, CC, PDL, PW, Cass.
Only 62,000 Miles On This Clean XLT Lariat
Matching Cap & A Class III Hitch
Brand New Inspection



1991 CHEV 4x4 DUALY
Only 49,000 Miles - Air Cond. 454 V-8
A Hard To Find Truck In Excellent Condition



1986 CHEV K-3500 CREW CAB
Dually With Sleeper Cap Only
61,000 Miles On This 454, AT,
Air, Tilt, CC, PW, PDL, Cass,
All New Tires & Inspection —
Ready For The Road



1985 CHEV 3/4 TON 8600 GVW
4x4
Auto, Only 75,000 Original Miles
Brand New Inspection - Local
Owner - Ready For Years
Of Service



1989 CHEV 3/4 TON EXT. CAB 4x4
A Choo-Choo Conversion - Good
Miles - Excellent Condition



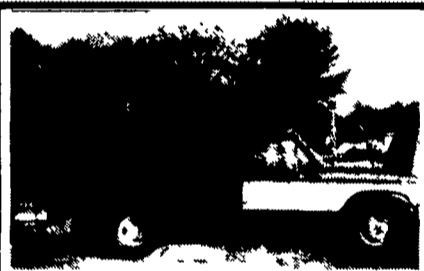
1991 CHEV 3/4 TON 8600 GVW
4x4
Auto, Air, Only 41,000 Miles —
Extra Nice, Just Like New



1989 CHEV 3/4 TON EXT CAB
4x4
Air, Clean, Only 67,000 Miles



1988 FORD F-350 12' STAKE
Only 19,000 Original Miles —
New PA Inspection,
Save, Save, Save



1986 FORD F-350 STAKE
8' Bed - Great For The Smaller
Jobs Good, Good Miles, V-8,
Auto — Clean



1994 CHEVY 10 FOOT
STAKE BODY
6.5 Liter Turbo - Diesel 5 Speed
Manual Heavy Duty Chassis
15,000 GVWR AM/FM Stereo



1994 10 FOOT STAKE BODY
5.7 Litre, V8, 5 Speed, Heavy
Duty Chassis, 11,000 GVWR,
AM/FM Stereo, Woodland Green



1994 CHEVY 1 TON
DUMP TRUCK
5.7 Liter, V8, 5 Speed Manual,
Heavy Duty Chassis, 11,000
GVWR, AM/FM Stereo, Woodland
Green



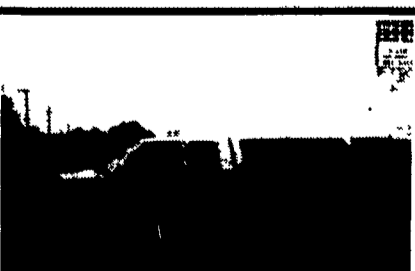
1988 CHEV STEPSIDE 4x4
V-8, Auto, Air, Tilt, CC, PW,
PDL, Cass, Only 56,000 Miles -
Dark Blue



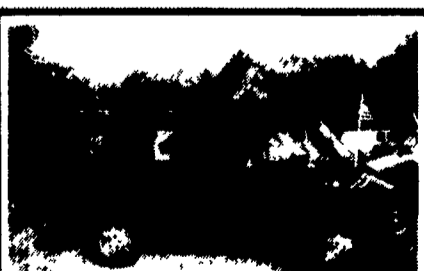
1990 FORD BRONCO —
EDDIE BAUER
V-8, Auto, Air, Tilt, CC, PW,
PDL, Cass, Only 55,000 Miles —
One Owner



1991 CHEV 3/4 TON EXT. CAB
4x4
V-8, Auto, Air, Tilt, CC, PW,
PDL, Cass, As Nice As They
Come — Tu-Tone Blue



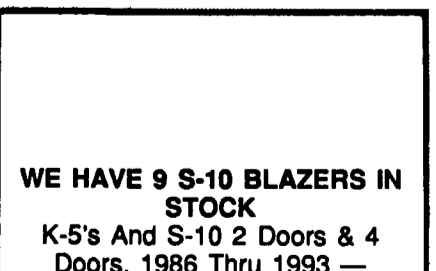
1992 CHEV SILVERADO EXT
CAB 4x4
V-8, Auto, Air, Tilt, CC, PDL,
PW, Cass, The One That
Everybody Wants — Super Sharp
With Matching Cap



1988 DODGE RAM VAN
Auto, AC, Only 48,000 Miles
Clean & In Excellent Condition



1992 CHEV G-20 WORK VAN
V-8, Auto, Only 26,000 Miles —
Local, One Owner -
Showroom Condition



WE HAVE 9 S-10 BLAZERS IN
STOCK
K-5's And S-10 2 Doors & 4
Doors, 1986 Thru 1993 —
Stop To See Our Excellent
Selection And Drive One Today