

Celebrate June Dairy Month At Park City

LANCASTER (Lancaster Co.) — The Lancaster County Dairy Promotion Committee will join with Boscov's at Park City to celebrate June Dairy Month on Friday, June 3 at 4 p.m. Members of Kids 'n Kows 4-H Dairy Club will take

several small calves and a milking cow to the tent erected in the parking lot near Boscov's Garden Center.

A cow milking contest will be held in the tent at 5 p.m. as several T.V. and radio personalities try

their hand at milking "the old fashioned way."

The evening's climax will begin at 6 p.m. when Turkey Hill Dairies will use 150 gallons of ice cream to construct a seven-foot high ice cream sundae. Everyone

is invited to come salute June Dairy Month and enjoy a free sample of a Turkey Hill ice cream sundae.

The festivities will resume under the tents again on Saturday, June 4 from 10 a.m. until 8 p.m. A petting area with small 4-H calves will be provided by members of the Pequea Valley 4-H Dairy Club. Numerous activities and contests will be held throughout the day under the second tent, including a milk drinking contest, dairy trivia game, and a cheese identifying contest. A special children's corner will have tables

and crayons for cow coloring pages, a dairy tic-tac-toe game, and stickers, pencils, or cow erasers for every child.

Many prizes have been donated to be given away at the end of the day by random drawing.

Thick milkshakes and hand-dipped ice cream cones are available at the Lancaster County Dairy Promotion Milk Wagon. Anyone interested in helping or wanting more information about the Lancaster County Dairy Promotion Committee should contact Joyce Blank at (717) 442-8142 or Donna Kreider at (717) 284-4776.

Holtzingers Complete First Phase Of Training

TAMPA, Fla. — Kevin and Karen Holtzinger, owners of a dairy farm in East Berlin, York County, recently completed the first phase of the Young Dairy Leaders Institute, held in Tampa Florida.

The Holstein Foundation, based in Brattleboro, Vt., coordinated the leadership seminar for dairy adults, with the support of individual and corporate business sponsors.

The Holtzingers were among 100 participants selected from 250 applications from across the United States, and spent four days of intensive training, undergoing the rigors of the business world.

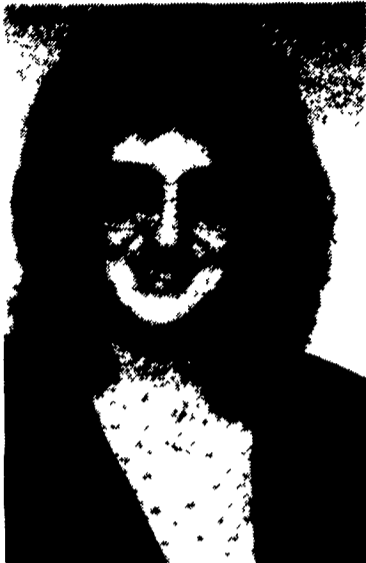
Leading authorities in the fields of communications, corporate business, and management companies, traced some of the factors that have been proven effective in the marketplace.

Learning how to handle stress and conflict, personal goal-setting and facing unusual opportunities, were among some of the skills taught during the seminar.

Participants tested their abilities to resolve conflicting views while perform roles during a mock town meeting. A simulated television talk show also provided a scenario for building effective and professional skills in public communications.

The leaders institute is a three-phase, first-of-its kind type of development program. The second phase began with the return of the members to their home community, where they are expected to serve in community leadership positions.

Phase III requires the participants to return to Tampa next year for assessment.



Karen Holtzinger



Kevin Holtzinger

D & M EXCAVATING, INC.

Lancaster, PA
(717) 394-0372



AGRICULTURAL

- Waterways
- Erosion Control
- Manure Storage
- Building Excavation
- Ponds
- Land Clearing

RESIDENTIAL

- Basements
- Septic Systems
- Trenching
- Driveways
- Erosion Control
- Grading

COMMERCIAL

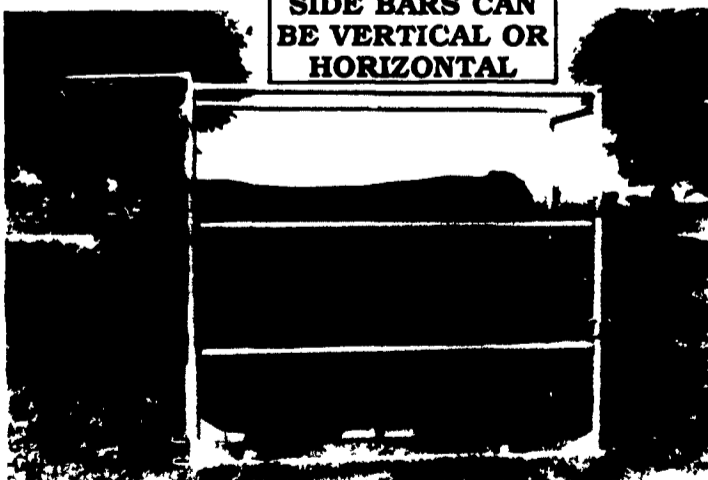
- Site Preparation
- Footers
- Parking Lots
- Storm Sewer
- Sanitary Sewer
- Lowboy/Dump

Call Dave Crill or Mark Sellers



GROOMING CHUTE

SIDE BARS CAN BE VERTICAL OR HORIZONTAL



- Coated with baked on TGIC Polyester Urethane Powder
- For safe and easy grooming, washing and clipping cattle
- Expanded metal floor stays cleaner and gives more traction
- Assembles and disassembles quick and easy
- Can easily be moved and loaded by one person

PAUL B. ZIMMERMAN, INC.

Call or Write For Additional Information And Your Nearest Dealer

Hours Mon. Thru Fri. 7 to 5 Sat. 7 to 11

296 Woodcorner Rd. Litz, PA 17543 1 Mile West of Ephrata 717-739-7365

MILK. IT DOES A BODY GOOD.™

EMHERR YOUR COMPLETE FARM AND HOME CENTER If We Do Not Have It, WE'LL GET IT!

KING KUTTER, INC. ROTARY MOWERS



The King Kutter Rotary Mower is a leader in performance and quality. It is constructed with a single top sheet welded to heavy I-beams and reinforced with spider and cross bracing for long lasting, heavy-duty

NOW IN STOCK:

- 5' 3 Pt. List \$629.00 SALE \$559.99
- 6' 3 Pt. List \$870.84 SALE \$759.99
- Heavy Duty 7' 3 Pt. List \$2,029.84 SALE \$1,699.99

Agri-Tuf® Hay Bale Bags 10 Per Case All Bags .5 Mil Thick



59" Diameter x 132" Reg. \$46.99 SALE \$41.99 Per Case

Buy Now And SAVE! TAFEG GALVANIZED All Sizes Listed Can Be Sold UPS



SIZE	SINGLE SPEED	VARIABLE SPEED
12" 720130	\$ 93.99	79044 \$109.99
18" 790131	\$134.99	790136 \$169.99
20" 790132	\$154.99	790137 \$189.99
24" 790133	\$229.99	790138 \$259.99

NORWESCO POLY STORAGE TANKS

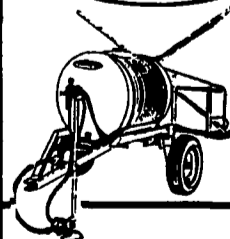
- A Quality Product at a Fair Price
- 3 Year Warranty
- Vertical Tanks - Sizes From 65 Gal. - 5000 Gal.
- Horizontal Tanks - Sizes From 20 Gal. - 1000 Gal.

425 Gal.	\$199.00	1000 Gal.	\$329.00
550 Gal.	\$259.00	1500 Gal.	\$429.00
		2100 Gal.	\$729.00

See Our Acre of Tanks - Many, Many Other Sizes In Stock



QUALITY SPRAYER EQUIPMENT



- LG-55 3 Pt. Less Pump With 3 Row 140" Boom \$379.99
- AGRI 110 & 150 Gal. 3 Pt. Less Pump With 8 Row Boom \$799.99
- AGRI 200 Gal. 32" d. Trailer Less w/8 Row Boom \$1,199.99

"STOCK GUARD" TUBULAR 1 5/8" ROUND CORNER GALVANIZED CATTLE GATES



4' 6 bar 1 5/8" Galv.	\$30.99	12' 6 bar 1 5/8" Galv.	\$51.99
6' 6 bar 1 5/8" Galv.	\$36.99	14' 6 bar 1 5/8" Galv.	\$61.99
8' 6 bar 1 5/8" Galv.	\$47.99	16' 6 bar 1 5/8" Galv.	\$72.99
10' 6 bar 1 5/8" Galv.	\$49.99	18' 6 bar 1 5/8" Galv.	\$82.99

- ★ Full Line Parts Dept. ★
- ★ Sell, Service & Install ★



Rt. 272 South Willow Street, PA 17584

Ph: 717-464-3321 or Toll Free 800-732-0053

Store Hours: Mon.-Sat. 7:30AM to 8:00PM

