

# Hog Markets



## New Holland Feeder Pigs

New Holland, PA  
Wed., May 26, 1994  
Report Supplied by Auction  
TODAY: 1283 HEAD  
LAST WEDNESDAY: 873 HEAD  
LAST YEAR: 1991 HEAD  
TREND: COMPARED TO LAST WEDNESDAY, FEEDER PIGS 4 00-16.00 LOWER. ALL PIGS WEIGHED ON ARRIVAL AND SOLD BY THE HUDNRED WEIGHT.  
US#1-2: 121 HEAD 32-38 LBS. 84.00-94.00, WGHTD. AVG. 35.79, WGHTD. PRICE 86.70; 231 HEAD 41-49 LBS. 82.00-92.00, WGHTD. AVG. 44.73, WGHTD. PRICE 85.65; 280 HEAD 50-59 LBS. 84.00-90.00, WGHTD. AVG. 54.49, WGHTD. PRICE 87.20; 33 HEAD 61-66 LBS. 74.00-78.00, WGHTD. AVG. 63.27, WGHTD. PRICE 75.90.  
US#2: 117 HEAD 31-39 LBS. 76.00-82.00, WGHTD. AVG. 34.60, WGHTD. PRICE 78.11; 113 HEAD 41-48 LBS. 72.00-78.00, WGHTD. AVG. 45.10, WGHTD. PRICE 74.90; 42 HEAD 54-59 LBS. 72.00-80.00, WGHTD. AVG. 55.67, WGHTD. PRICE 77.17.  
US#2-3 6 HEAD 37 LBS. 74.00, WGHTD. AVG. 37.00, WGHTD. PRICE 74.00; 16 HEAD 41-49 LBS. 64.00-68.00, WGHTD. AVG. 45.50, WGHTD. PRICE 65.58; 31 HEAD 55 LBS. 66.00, WGHTD. AVG. 55.00, WGHTD. PRICE 66.00.  
SLAUGHTER: 57 HEAD 21-23 LBS. 125.00-160.00, WGHTD. AVG. 22.30, WGHTD. PRICE 143.57; 80 HEAD 26-29 LBS. 98.00-102.00, WGHTD. AVG. 27.05, WGHTD. PRICE 100.61.

## Indiana Hogs

Louisville, Kentucky  
Thursday, May 26, 1994  
INDIANA DIRECT HOGS OPENING. BARROWS AND GILTS: .50-1.00 LOWER. DEMAND LIGHT.  
US 1-2 230-260 LBS. 41.50-43.00.  
US 2-3 230-260 LBS. 37.50-41.50, 210-230 LBS. 35.00-38.00.  
SOWS: STEADY.  
US 1-3 300-500 LBS. 30.00-34.00, 500-650 LBS. 34.00-40.00.

## State Graded Feeder Pig Sale

at Westminster Livestock Auction  
Report Supplied by Auction  
May 20, 1994  
456 PIGS, 2 WEEKS AGO 362. PRICES UNEVEN FROM LARGER CROWD, BEST DEMAND FOR #1&2 50-70 LBS. HEAVY PIGS SOLD 15.00 LOWER.  
GRADE 1&2: 7 HEAD 34 LBS. 105.00; 56 HEAD 45-54 LBS. 95.00-104.00; 206 HEAD 43-59 LBS. 80.00-90.00; 13 HEAD 61 LBS. 102.00; 30 HEAD 61-69 LBS. 80.00-84.00; 112 HEAD 77-84 LBS. 65.00-67.00; 3 HEAD 97 LBS. 60.00.  
GRADE 2: 10 HEAD 30-41 LBS. 76.00-83.00; 15 HEAD 68-75 LBS. 58.00-64.00.  
NEXT GRADED SALE FRIDAY, JUNE 3, 1.30 P.M.

## Lancaster Hogs

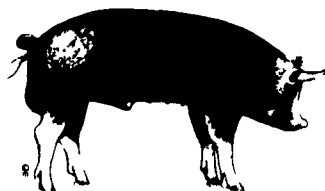
Lancaster Stockyards  
Saturday, May 21, 1994  
Report supplied by auction  
There will no longer be a sale auction on Saturday. Sales will be held Monday and Wednesday.

## St. Louis Cattle, Hogs

Springfield, Il.  
Monday, May 23, 1994  
NATIONAL STOCKYARDS, ILLINOIS CATTLE AND CALVES 400 COMPARED TO LAST MONDAY SLAUGHTER STEERS AND HEIFERS 3.50-4.00 LOWER, EXCEPT HOLSTEIN STEERS STEADY TO 2.00 LOWER IN A VERY LIGHT TEST. COWS AND BULLS STEADY. SUPPLY MAINLY CHOICE SLAUGHTER STEERS AND HEIFERS WITH AROUND 15% COWS.  
SLAUGHTER STEERS: CHOICE 2-4 1050-1350 LBS. 62.50-64.00, FEW YG 2-3 1100-1350 LBS. 64.00-64.50, PART LOAD 65.00; SELECT 2-3 950-1300 LBS. 56.00-59.50; HOLSTEINS STEERS FEW MIXED SELECT AND CHOICE 2-3 1050-1400 LBS. 54.00-57.00.  
SLAUGHTER HEIFERS: CHOICE 2-4 900-1300 LBS. 61.00-63.00; SELECT 2-3 900-1200 LBS. 56.00-58.50.  
SLAUGHTER COWS: BREAKING UTILITY AND COMMERCIAL 2-4 43.00-46.00, HIGH YIELDING BREAKING UTILITY 46.00-47.00, CUTTER AND BONING UTILITY 1-2 46.00-47.00; HIGH YIELDING CUTTER AND BONING UTILITY 1-2 47.00-48.00; CANNER AND LOW CUTTER 1-2 42.00-45.00, SHELLY CANNER 1-2 38.00-42.00.  
BULLS: FEW YIELD GRADE 1-2 1225-2250 LBS. 54.00-59.00.  
THIS REPORT IS A SERVICE OF THE ILLINOIS DEPARTMENT OF AGRICULTURE LIVESTOCK AND GRAIN MARKET NEWS SERVICE, SPRINGFIELD, IL. (217) 782-4925.

## New Holland Hog Auction

Lancaster, Pa.  
Monday, May 23, 1994  
Hog Receipts:  
Today 722  
Last Monday 804  
Last Year 1266  
TREND: Compared to last Monday barrows and gilts 50-1.00 lower.  
BARROWS AND GILTS: US 1-2 215-255 lb 43.50-44.00.  
US 1 215-245 lb 44.50-45.75, 20 head 235 lb 46.50.  
US 1-3 210-265 lb 42.00-43.00, 190-210 lb 39.00-41.50.  
US 2-3 270-300 lb 38.00-41.00.



## KIRKWOOD HAY AUCTION

Hay, Straw and Grain Auction EVERY TUESDAY 11:00  
Located Rt. 472 5 miles south of Quarryville or 8 miles north of Oxford corner of Rt. 472 and Noble Road.  
Lloyd H. Kreider, Auctioneer AU-000513L  
No out of state checks

# Hay & Grain Markets



## Good's Hay

Leola, Pa.  
Wed., May 25, 1994  
Report Supplied by Auction  
TOTAL LOADS: 70.  
ALFALFA: 50.00-155.00.  
MIXED HAY: 65.00-160.00.  
STRAW: 100.00-180.00  
TIMOTHY: 110.00-150.00.  
CORN: 100.00-102.00.  
GRASS: 65.00-82.00.  
CLOVER: 77.00-80.00.  
OATS 2 25 BU.

## Kutztown Produce Auction

Hay Auction  
Report Supplied by Auction  
Saturday, May 21, 1994  
TOTAL LOADS: 27.  
MIXED HAY: 72.00-98.00.  
ALFALFA: 100.00-145.00.  
TIMOTHY: 88.00-132.00.  
ORCHARD GRASS: 82.00-100.00.  
WHEAT STRAW: 117.00-135.00.  
OATS HAY: 72.00-74.00.  
SALE HELD EVERY SATURDAY AT 9 A.M.

## Diffenbach Auction Center

New Holland, Pa.  
Monday, May 23, 1994  
Report Supplied by Auction  
TOTAL LOADS: 87.  
ALFALFA: 72.00-210.00.  
MIXED HAY: 75.00-200.00.  
TIMOTHY: 132.00-180.00.  
ORCHARD GRASS: 90.00-130.00.  
STRAW: 140.00-205.00.  
EAR CORN: 95.00-103.00.  
FIRELOAD: 1 LOAD 47.00.

## Leinbach's Hay

Shippensburg, PA  
May 21 and 24  
Report Supplied by Auction  
31LOADS.  
ALFALFA: GOOD 100.00-120.00, FAIR 72.50-90.00.  
MIXED HAY: 74.00-97.50.  
TIMOTHY: 80.00-130.00.  
BROME GRASS: 92.00-130.00.  
ORCHARD GRASS: 88.00-102.00.  
STRAW: 75.00-142.00.  
EAR CORN: 104.00-109.00  
BARLEY AND OATS: 2.40-2.70 BU  
MULCH HAY: 41.00

## Dewart Hay

Dewart, PA.  
Monday, May 25, 1994  
Report Supplied by Auction  
HAY, 80.00-103.00  
WOOD: 1 LOADS, 35.00 LOAD.  
CORN: 6 LOADS, 85.00-102.00.  
OATS: 2.50 BU.

## PENNFIELD GRAIN BANK

Pennfield Offers A Sound Program For The Dairy Farmer To Use His Grain "Same As Cash" To Reduce His Monthly Feed Bill And To Avoid Having To Take "Harvest

Prices Week Of 5/30/94  
Corn \$3.18 Bu.  
Soybeans \$6.87 Bu.  
Barley \$2.20 Bu.

- No Storage Charges
- Prices Updated Weekly
- Grain Bank Balance Shown On Each Invoice
- No Hidden Charges

For every ton of qualifying dairy feed purchased you will receive one ton of grain back hauled at no charge



## North Jersey Market

Hackettstown, N.J.  
Report Supplied by Auction  
Tuesday, May 24, 1994  
Hay—Straw & Grain Report  
ALFALFA 2 LOTS, 3.10 AND 4.00  
BALE  
GRASS HAY 10 LOTS, 2.00-2.70  
BALE  
MIXED HAY: 6 LOTS, 1.50-3.80  
BALE  
TIMOTHY HAY: 1 LOT AT 2.00  
BALE  
WHEAT STRAW: 1 LOT AT 3.70  
BALE  
SHELLED CORN: 2 LOTS, 5.50 AND 5.75 BAG.  
OATS 1 LOT AT 6.75 BAG  
TOTAL 23 LOTS.

## Vintage Hay

Paradise, PA  
Thurs., May 26, 1994  
Report Supplied by Auction  
17 LOADS.  
ALFALFA: 50.00-136.00.  
MIXED HAY: 85.00-115.00.  
TIMOTHY: 126.00.  
STRAW: 110.00-143.00.  
SALE TIME 1 P.M.

## Keister's Hay

Middleburg, PA  
May 24, 1994  
Report supplied by auction  
36 LOADS, 28 LOADS OF HAY.  
ALFALFA: 95.00-100.00.  
MIXED HAY: 50.00-120.00.  
TIMOTHY: 95.00-105.00.  
STRAW 1 LOAD, 130.00.  
EAR CORN: 7 LOADS, 85.00-105.00

## Greencastle Livestock Market

May 19 and 23  
Hay & Straw  
Report Supplied by Auction  
11 LOADS  
ALFALFA 84.00-140.00  
MIXED HAY 80.00  
ORCHARD GRASS 87.00-110.00

## Frederick Co. Hay

Buckeystown, Md.  
Thursday, May 26, 1994  
Report Supplied by Auction  
ALFALFA GOOD 121.00  
TIMOTHY FANCY 167.00  
ORCHARD GRASS GOOD, NEW 75.00  
NO SALE UNTIL OCTOBER 6

## Kirkwood Hay Auction

Kirkwood, Pa.  
Tuesday, May 24, 1994  
Report Supplied by Auction  
29 LOADS OF HAY.  
MIXED HAY: 1ST CUTTING 66.00-89.00.  
TIMOTHY: 95.00-100.00  
ALFALFA 1ST CUTTING 84.00-114.00, 2ND CUTTING 99.00-120.00  
CLOVER 80.00-104.00  
GRASS 112.00-157.00  
WHEAT STRAW: 141.00-166.00.  
BARLEY STRAW: 157.00-162.00  
RYE STRAW: 130.00-218.00  
WOOD: 39.00 LOAD  
SALE TIME 11 A.M.

## Green Dragon Hay

Ephrata, Pa.  
Friday, May 20, 1994  
Report Supplied by Auction  
73 TOTAL LOADS.  
MIXED HAY 107.00-162.00  
ALFALFA: 95.00-190.00  
TIMOTHY 150.00-155.00  
ORCHARD GRASS: 97.00-125.00  
STRAW 120.00-182.00  
EAR CORN 77.00-113.00  
OATS 2.00 BU

## Regional Hay

May 23, 1994  
Eastern, Pa.  
HAY & STRAW MARKET FOR EASTERN PA. - (ALL HAY NO. 2 AND BETTER. PRICES PAID BY DEALERS AT THE FARM & PER TON). HAY & STRAW MOSTLY STEADY, INSTANCES WEAKER, SOME NEW HAY ON MARKET, PRICES NOT AVAILABLE.  
ALFALFA 80.00-120.00; MIXED HAY 65.00-110.00, FEW REPORTED 120.00; TIMOTHY HAY 65.00-110.00; STRAW 75.00-120.00, FEW REPORTED 130.00; MULCH 30.00-55.00.

SUMMARY OF LANCASTER CO. HAY AUCTIONS FOR WEEK ENDING 5/20/94. PRICES PER TON: LOADS: 210 HAY, 58 STRAW & 28 EAR CORN.  
ALFALFA 80.00-167.00; MIXED HAY 70.00-155.00; TIMOTHY HAY 97.00-155.00; STRAW 130.00-182.00; EAR CORN 96.00-118.00

SUMMARY OF CENTRAL PA. HAY AUCTIONS FOR WEEK ENDING 5/20/94. PRICES PER TON: LOADS: 118 HAY, 16 STRAW & 25 EAR CORN.  
ALFALFA 75.00-140.00; MIXED HAY 70.00-125.00; TIMOTHY 79.00-135.00; STRAW 85.00-135.00; EAR CORN 75.00-95.00

## In This Issue

Four Sections

### COLUMNS

Now is the Time..... A10  
On Being A Farm Wife..... B 4  
Consuming Thoughts..... B 3  
Taking Time..... B 5  
You Ask..... B 7  
Ida's Notebook..... B15  
Poultry Pointers..... C 2  
Livestock Ledger..... C 8

### DEPARTMENTS

Editorial..... A10  
Farm Calendar..... A10  
Farm Forum..... A10  
Futures..... A16  
Mailbox Markets..... B18  
Sale Reports..... B21  
Public Auction Register..... B26  
Business News..... C 6  
Classified Ads..... C22, D 7

### DAIRY

DHIA Focus..... A24  
Women Pioneers..... B 2

### FEATURES

Recycle Pesticide Containers A26  
Ag Sciences..... A34  
York Selects..... B12  
Rhubarb Festival..... B14  
Farm Women Celebrate..... B16  
Woodlot Workshop..... D 5

### HOME AND YOUTH

Homestead Notes..... B 2  
Home On The Range..... B 6  
Cook's Question Corner..... B 8  
Kid's Korner..... B10  
4-H Happenings..... B15, B24  
FFA Happenings..... B17  
Farm Women Societies..... B 9

Walter M. Dunlap and Sons offers all cattle feeders two marketing days. Give us a call for advice and marketing conditions.

**MONDAYS OR WEDNESDAYS**

Consign With Us - For The Marketing Edge

Next Feeder Cattle Sale  
Wednesday, June 1 - 11:00 A.M.

Walter M. Dunlap and Sons  
Lancaster Stockyards  
Tel: (717) 397-5136

An Old Line Commission Firm Keeps Afloat Against The Times