

Shenandoah Valley Livestock

Harrisonburg, Va. May 21, 1994

Report supplied by auction
 STEERS: M&L-1 300-500 LBS. 94.00-107.00, 500-700 LBS. 75.00-91.00, 700-900 LBS. 62.50-74.25.
 S-L & M&L-2: 300-500 LBS 85.00-92.00, 500-700 LBS. 79.00, HOLSTEIN 300-1000 LBS. 52.00-81.00.
 HEIFERS. 300-500 LBS. 69.00-83.50, 500-700 LBS. 65.00-72.50.
 S-L & M&L-2: 300-500 LBS 66.00-73.00, 500-700 LBS. 64.00-65.50.
 STOCK COWS: BEEF SINGLES 425.00-620.00, PAIRS 500.00-785.00; BABY CALVES 47.00-150.00.
 SLAUGHTER CATTLE: STEERS CHOICE 2-4 TOO FEW TO QUOTE, GOOD 2-3 TOO FEW TO QUOTE, HEIFERS CHOICE 2-4 TOO FEW TO QUOTE.
 SLAUGHTER COWS: UTILITY AND COMMERCIAL 2-4 42.00-47.75, CANNER AND CUTTERS 1-3 35.00-42.00.
 SLAUGHTER BULLS 1&2 52.25-62.25
 LAMBS BLUE O HIGH CHOICE AND PRIME SPRING 73 10; RED O CHOICE 77 25; FEEDER LAMBS CHOICE 82 50-86.00; SLAUGHTER EWES 25 50-32 50
 SOWS 1-3 38 50
 BOARS 23 75
 SLAUGHTER CALVES. GOOD AND CHOICE: 71.00-79.00.

North Jersey Livestock

Hackettstown, NJ
 Report Supplied by Auction Tuesday, May 24, 1994
 Report supplied by auction

CALVES .24-2.00.
 COWS .20-52 1/2.
 EASY COWS .09-.42.
 HEIFERS .35 1/2-.72.
 BULLS .44 1/2-.64.
 STEERS .53-.66.
 HOGS .15-.46.
 SOWS .35.
 ROASTING PIGS EACH 15.00-59.00.
 BOARS .25-.27.
 SHEEP 15-.55.
 LAMBS EACH 10.00-69.00.
 LAMBS PER LB. .43-.85.
 GOATS EACH 20.00-145.00.
 KIDS EACH 10.00-74.00.
 TOTAL 1244

New Holland Dairy

New Holland Sales Stables
 Wednesday, May 25, 1994
 Report supplied by auction
 DAIRY COWS 219; HEIFERS 135; BULLS 7 MARKET STEADY.
 HERD OF 35 HEAD ALL STAGE COWS 500.00-1235.
 LOCAL FRESH COWS 400.00-1175.00.
 FRESH HEIFERS 750.00-1400.00.
 LOCAL SPRINGERS 785.00-1000.00.
 UPSTATE LOADS FRESH

885.00-1410.00.
 BETTER FRESH COWS 1275.00-1400.00.
 LOAD OF CANADIAN FRESH COWS 1100.00-1275.00, SPRINGERS 950.00-1100.00.
 SPRINGING HEIFERS, LARGE 1075.00-1210.00; SMALL 800.00-960.00.
 SHORFBRED HEIFERS: 700.00-900.00.
 OPEN BREEDING AGE HEIFERS 710.00-825.00.
 SMALL OPEN HEIFERS 310.00-535.00.
 BULLS 420.00-870.00.
 HERD OF 25 HEAD ALL STAGES

550.00-1500.00.
 HERD OF 103 HEAD ALL STAGES 520.00-1350.00.

Belleville Livestock Auction

Belleville, Pa.
 Wednesday, May 25, 1994
 Report Supplied by Auction

CATTLE 272.. Supplied by the auction .
 STEERS: High Choice and Prime 59.25-62.00, Choice 57.75-58.85. COWS: Breaking Utility and Commercial 48.10-51.50, Cutter and Bon. Utility 45.50-49.85, Canner and Low Cutter 43.00-46.10. SHEEPS 38.00-42.85. BULLS: Yield Grade No. 2 51.00-53.35. FEEDER

CATTLE: Steers: 61.00-79.50; Heifers: 54.50-67.00; Bulls: 51.00-55.00.
 CALVES 104..VEALERS: Utility 48.00-62.00. FARM CALVES: No. 1 Holstein bulls 95/105 lbs. 127.50-170.00, No. 2 85/120 lbs. 105.00-130.00.
 HOGS 84..BARROWS AND GILTS: US 1-2 230/260 lbs. 41.75-43.00, US 1-3 200/280 lbs. 38.75-40.50. SOWS: US 1-3 36.00-38.00. BOARS: 26.75-27.25.
 FEEDER PIGS 160..US 1-3 25/40 lbs. 20.00-37.50.-- per head.
 SHEEP 46..Spring sl. lambs: High Choice and Prime 90/100 lbs. 84.00-86.00, Choice 80/120 lbs. 79.50-84.00. Slaughter sheep: 18.00-36.50.
 GOATS 10..Large 42.00-58.00.-- per head.

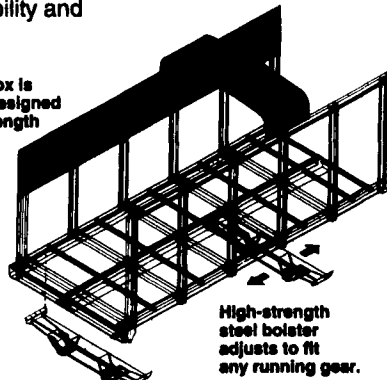
MILLER PRO

Free Video
 See our Forage Boxes and Dump Boxes in action!
 Call your dealer or 1-800-247-5557

5100 Forage Boxes

- Independent feathering clutches for metering augers and outfeed
- 4-speed transmission operates in a sealed oil bath
- Wide body and crop clear roof
- Unitized high strength steel box on all 5100 models assures dependability and long life

The 5100 Box is computer designed for best strength to weight ratio and low center of gravity.



High-strength steel bolster adjusts to fit any running gear.

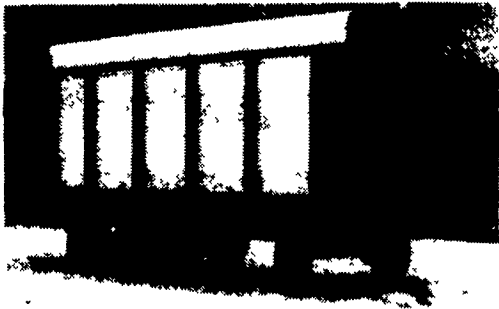


4-Speed shift-under-load gear transmission operates in an enclosed oil bath for long life.

Optional Miller Pro Running Gear
 • Choice of models from 10 - 14 tons
 • Automotive-type steering
 • C-Channel design for best stability and tracking

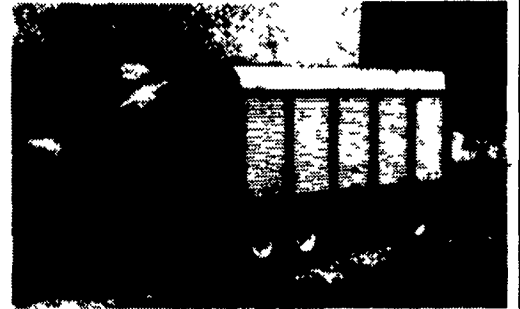
Front & Rear Unload Forage Box

- Positive mechanical 2-direction drive
- Easy direction change by simply moving a drive coupler
- Super slippery Poly-clad floor



Rear Unload Forage Box

- 30-second mechanical unloading
- Unobstructed unloading with high rear door hinges
- Automatic rear door



Hydraulic High Lift Dump Boxes

- Great for forage crops or grain
- 800 or 1100 cubic foot models
- Low loading height
- 11 foot dumping clearance
- One minute unloading
- Cart models available



Model 1100 Rotary Rake

- Exclusive hydraulic raking height adjustment
- 11 tine arms gently lift and release crop with no roping and minimum leaf loss
- Rakes fluffy windrows for less drying time
- Rakes 10'-6" swath for 13'-5" working width
- Fully enclosed oil bath gearbox
- Swath curtain bolted to steel frame



High Clearance, Minimum Till Row Crop Cultivators

- 4-row, 6-row, 8-row & 12-row models
- Easy adjustment & maintenance
- 25" crop clearance
- Maximum gang stability
- Hydraulic fold
- Efficient soil penetration
- Accurate depth control

It's never been easier to buy Miller Pro!

Miller Pro Retail Financing

0% interest for 24 months on 5100 Forage Boxes. Competitive rates and programs on all other equipment.

See your dealer...or call Miller Pro today! 1-800-247-5557

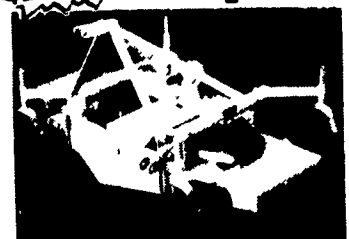
Profit Making Products for the Professional Farmer

LAND PRIDE

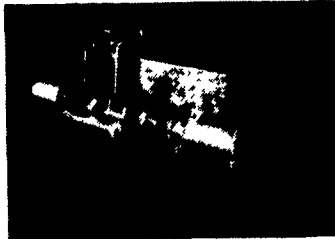


Quality equipment from a quality company.

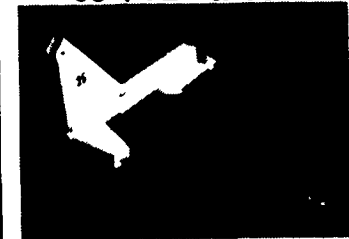
NEW



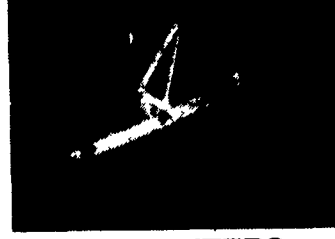
GROOMING MOWER
 3-Spindle, 48", 60", 72" & 90"



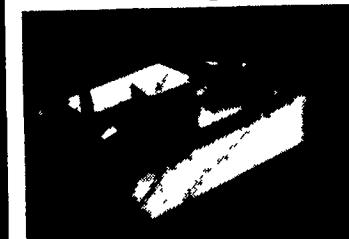
BOX SCRAPERS
 42" Through 96"



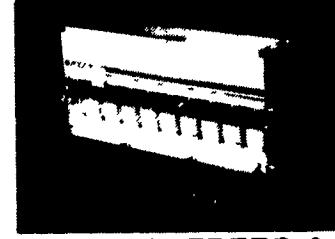
REAR BLADES
 48" Through 120"



PULVERIZERS
 48" Through 84"



ROTARY CUTTERS
 48" Through 120"



OVER SEEDERS & PRIMARY SEEDERS
 48" And 72"



LANDSCAPE RAKES
 48" Through 96"



TILLERS
 34" Through 76"

KELLER BROS.

KUBOTA



TRACTORS & EQUIPMENT

Serving Central PA Since 1921

PILOTS! KELLER BROS. AIRPORT
 2000' RUNWAY ON FREE ROADSHIP

MONDAY-FRIDAY 7:30-5:00
 SATURDAY 7:30-12:00

LANCASTER
 4000 Paradise Pkwy, Lancaster, PA 17607
 At Service to the Professional Farmer
 717-669-2500

LEBANON
 Rt. 47 Box 406, Lebanon, PA 17040
 Rt. 410 1 mile West of Shillington
 717-646-2000