

Central U.S. Carlot

Pork Report
Wednesday, May 25, 1994
Report supplied by USDA

CENTRAL U.S. CARLOT PORK REPORT FOB OMAHA BASIS INCLUDES MAJOR PRODUCTION AREAS IN MIDWEST AS OF 3 P.M. COMPARED TUESDAY'S 3:00 P.M. CLOSE FRESH LOINS MOSTLY 2:00-3:00 LOWER; BUTTS 1:00-2:00 LOWER, SKND HAMS 17-20 LBS. WEAK TO 1.00, 20-26 LBS. WEAK TO 2.00 LOWER; SDLS. BELLIES GENERALLY 1.00 LOWER. TRADING SLOW, WITH LIGHT DEMAND FOR MODERATE TO HEAVY OFFERINGS

61.5 LOADS PORK CUTS
28.0 LOADS TRIM/PROCESS PORK/
PORK CUTS

LOINS, REGULAR, FRESH
14-18 LBS., * 15.0 LOADS, RANGE 100.00-109.00, WGHTD AVG 105.87
1/4" TRIM 14-18 LBS., 13.5 LOADS, RANGE 120.00-129.00, WGHTD. AVG. 124.78

1/2" TRM/LESS 14-18 LBS., 1.5 LOADS, RANGE 135.00, WGHTD AVG. 135.00.

18-22 LBS *, 0.5 LOADS, RANGE 95.00, WGHTD. AVG. 95.00.

1/4" TRIM 18-22 LBS., 0.5 LOADS, RANGE 113.00, WGHTD AVG. 113.00.

COMBOS 22 LBS AND UP, RANGE 73.00, WGHTD. AVG. 73.00 E.

LOIN, BNLS. CNTR CUT
5-9 LBS STRAP-ON, RANGE 233.00, WGHTD AVG 233.00 E.

5-9 LBS STRAP-OFF, 3.0 LOADS, RANGE 225.00-237.00, WGHTD. AVG. 230.00

TENDERLOIN 1.25 LBS. AND DOWN
0.5 LOADS, RANGE 322.00, WGHTD. AVG 322.00

PICNIC, FRESH
SMKR TRM, RS, COMBO
1.0 LOADS, RANGE 37.00, WGHTD AVG 37.00

BOSTON BUTT
4-8 LBS., 11.0 LOADS, RANGE 71.00-76.00, WGHTD AVG 74.73

1/4" TRIM 4-8 LBS., 11.0 LOADS, RANGE 90.00-95.00, WGHTD AVG 92.64

SPARERIB, FRESH
1.5-3.5 LBS., 1.5 LOADS, RANGE 130.00-133.00, WGHTD AVG 131.00

3.5-5.5 LBS., 0.5 LOADS, RANGE 103.00, WGHTD AVG. 103.00.

HAM, SKINNED, SELECTED
FRESH 14-17 LBS., 0.5 LOADS, RANGE 56.00, WGHTD AVG. 56.00.

FRESH 17-20 LBS., 5.0 LOADS, RANGE 51.00, WGHTD AVG 51.00.

FRESH 20-26 LBS., 6.0 LOADS, RANGE 50.00-54.00, WGHTD AVG 50.67

HAM, SKINNED, COMMODITY
17-20 LBS., RANGE 51.00, WGHTD. AVG 51.00 A

FRESH 20-26 LBS., RANGE 51.00, WGHTD AVG 51.00 A

BELLY, SDLS, SKIN-ON, FRESH
FRESH 10-12 LBS., 2.0 LOADS, RANGE 34.50, WGHTD AVG 34.50

FRESH 12-14 LBS., 4.0 LOADS, RANGE 38.00-39.00, WGHTD AVG 38.25

FRESH 14-16 LBS., 6.0 LOADS,

RANGE 38.00-39.00, WGHTD. AVG. 38.50.

FRESH 16-18 LBS., 3.0 LOADS, RANGE 36.00, WGHTD. AVG. 36.00

FRESH 18-20 LBS., RANGE 35.00, WGHTD. AVG. 35.00 A.

FRESH 20-25 LBS., 1.0 LOADS, RANGE 32.00, WGHTD. AVG. 32.00.

PORK TRIMMINGS/
BONELESS PROCESSING PORK
(CHEMICAL LEAN)

COMBO 42% FRESH, 3.5 LOADS, RANGE 26.00, WGHTD. AVG 26.00

BOXED 42% FROZEN, UNQUOTED.
COMBO 72% FRESH, 14.5 LOADS, RANGE 41.00-42.00, WGHTD AVG. 41.07.

BOXED 72% FROZEN, RANGE 47.00, WGHTD AVG. 47.00 E.

PICNIC CUSHION MEAT
BOXED 92% FROZEN, RANGE 90.00, WGHTD AVG. 90.00 A.

BONELESS PICNIC MEAT
COMBO 72% FRESH, 9.0 LOAD, RANGE 43.00-44.00, WGHTD AVG. 43.11

SHANK MEAT
FROZEN, 1.0 LOADS, RANGE 59.00, WGHTD AVG. 59.00

SKINNED JOWLS
COMBO FRESH, RANGE 28.00, WGHTD. AVG. 28.00 A.

BOXED FROZEN, UNQUOTED.
NOTE! (*) REFLECTS 1/4" OR 1/2" TRIMMED PRODUCT BROUGHT BACK TO A REGULAR COMMODITY BASIS.

ABCDE AFTER QUOTES REPRESENTS DAYS SINCE LAST ACTUAL MARKET TEST. QUOTES ARE DROPPED AFTER 5 DAYS OF NO TEST OR BEFORE IF THEY NO LONGER REFLECT CURRENT MARKET CONDITIONS.

PORK CARCASS CUTOUT
WEDNESDAY, MAY 25, 1994

ESTIMATED GROSS CUTOUT VALUES OF A 175 LB. HOG CARCASS BASED ON USDA CUTTING YIELD TESTS AND CARLOT PRICES. WEDNESDAY'S CARCASS GRADES AND PRICES PER CWT.:

US#1 59.89, CHANGE FROM TUESDAY'S VALUE -0.93; US#2 58.03, CHANGE FROM TUESDAY'S VALUE -0.90, US#3 56.16, CHANGE FROM TUESDAY'S VALUE -0.88, US#4 54.29, CHANGE FROM TUESDAY'S VALUE -0.87.

TODAY'S CALCULATIONS FOR USA#2 175 LB. PORK CARCASS.

SKINNED HAMS, 14-20 LBS., 21.01% OF CARCASS, 51.00 FOB VALUE, -0.25 CHANGE FROM TUES; LOINS, 1/4" TRIM, 14-22 LBS., 20.33% OF CARCASS, 122.00 FOB VALUE, -2.00 CHANGE FROM TUES

BELLIES, SDLS, 12-14 LBS., 13.90% OF CARCASS, 38.00 FOB VALUE, -1.50 CHANGE FROM TUES; SPARERIBS, 3.5DN LBS., 3.03% OF CARCASS, 131.00 FOB VALUE, -4.00 CHANGE FROM TUES.

PICNICS, 8-12 LBS., 10.31% OF CARCASS, 29.00 FOB VALUE; BUTTS, 1/4" TRIM, 4-8 LBS., 7.25% OF CARCASS, 92.00 FOB VALUE, -1.00 CHANGE FROM TUES.

JOWL, 2.85% OF CARCASS, 28.00 FOB VALUE, NECKBONES, 1.52% OF CARCASS, 9.00 FOB VALUE

FEET, 1.05% OF CARCASS, 14.00 FOB VALUE; TAILS, 0.22% OF CAR

CASS, FOB VALUE 21.00.
TRIM 72%, 2.19% OF CARCASS
41.00 FOB VALUE -2.00 CHANGE FROM TUES.; LARD 10.85% OF CAR CASS, 14.50 FOB VALUE.

Central U.S. Carlot

Beef Report
Wednesday, May 25, 1994
Report supplied by USDA

CENTRAL U.S. CARLOT BEEF REPORT (INCLUDES THE MAJOR PRODUCTION AREAS IN THE MIDWEST AND TEXAS) AS OF 3 P.M. COMPARED TO TUESDAY'S 3:00 P.M. REPORT. UTILITY CARCASSES STEADY TO 2.00 LOWER; CUTTER NOT ESTABLISHED WITH A WEAK UNDERTONE. DEMAND AND OFFERINGS LIGHT TO MODERATE.

COW AND BULL CARCASSES
FOB OMAHA BASIS
9 LOADS REPORTED

UT, BRK 2-4 450 AND UP, 3 LOADS, RANGE 73.00-75.00, LATEST ESTB. MKT 73.00-75.00

UT, BNG 1-3 400 AND UP, 6 LOADS, RANGE 78.00-80.00, LATEST ESTB MKT 78.00-80.00.

CUTTER 1-2 350 AND UP, UNQUOTED.

BULLS 500/UP YG1, LATEST ESTB. MKT 100.00 A.

BONELESS PROCESSING
BEEF/BEEF TRIMMINGS
167 LOADS REPORTED

FRESH 90% BONELESS BEEF 1.50-2.00 LOWER IN LIGHT TRADING; 65% 4.00-6.00 LOWER THAN LAST TEST; OTHER TYPES NOT ESTABLISHED. DEMAND VERY LIGHT FOR MODERATE OFFERINGS. BEEF TRIMMINGS WEAK ON FAIRLY GOOD DEMAND AND MODERATE TO HEAVY OFFERINGS.

90% FRESH, 12 LOADS, RANGE 114.0-115.00, WT. AVG. 114.56.

90% FZ, UNQUOTED.
85% FR, UNQUOTED.
85% FZ, UNQUOTED.

75% FR, RANGE 85.5, WT. AVG. 85.50 A.

75% FZ, UNQUOTED.
65% FR, 8 LOADS, RANGE 58.00-61.00, WT. AVG. 59.50.

65% FZ, UNQUOTED.
50% FR, 91 LOADS, RANGE 29.00-31.00, WT. AVG 29.84.

50% FZ, 36 LOADS, RANGE 34.00, WT AVG. 34.00.

50% BX, 8 LOADS, RANGE 32.00-34.00, WT. AVG. 32.38.

BULL 92-94, RANGE 135.0, WT. AVG 135.00 A.

FOB EAST TX & OK
90% FR, 3 LOADS, RANGE 115.0, WT. AVG. 115.00.

90% FZ, UNQUOTED.
85% FR, UNQUOTED.
85% FZ, UNQUOTED.
75% FR, UNQUOTED.
75% FZ, UNQUOTED.
65% FR, UNQUOTED.
65% FZ, UNQUOTED.
BULL 92-94, UNQUOTED.
CAF NORTHEAST AREAS
90% FR, 9 LOADS, RANGE 119.0, WT AVG. 119.00.
75% FZ, UNQUOTED.
65% FR, UNQUOTED.
65% FZ, UNQUOTED.
ABCDE AFTER QUOTES REPRESENTS DAYS SINCE LAST ACTUAL MARKET TEST. QUOTES ARE DROPPED AFTER 5 DAYS OF NO TEST OR BEFORE IF THEY NO LONGER REFLECT CURRENT MARKET CONDITIONS.

Frederick Livestock Auction

Frederick, Md.
May 23, 1994

Report Supplied by Auction

SLAUGHTER COWS: 79 HEAD, STEADY TO 100 LOWER. UTILITY 46.00-49.50; LOW DRESSING 44.00-46.00; CANNERS 43.00-47.00; SHELLY 43.00 DOWN.

BULLS: 7 HEAD. YG#1 1750 LBS. AT 61.00; YG#2 1200-1800 LBS. 55.00-57.00. FED STEERS: FEW OFFERED; SELECT HOL 1400-1550 LBS. 54.75. FED HEIFERS: NONE.

VEAL CALVES: 153 HEAD. LOW CHOICE 135-275 LBS. 77.00-88.00; CULLS 85-110 LBS. 81.00-91.00; 50-80 LBS 70.00-80.00.

FARM CALVES GOOD DEMAND
HOLSTEIN BULLS #1 90-120 LBS. 140.00-160.00; #2 75-90 LBS 100.00-140.00; HOLSTEIN HEIFERS #1 90-120 LBS. 190.00-227.00; 75-85 LBS. TO 180.00; BEEF X BULLS AND HEIFERS TO 150.00.

BUTCHER HOGS: 31 HEAD, 2.00 HIGHER. US#1&3 215-260 LBS. 42.50-43.25.

SOWS: FEW 400 LBS. TO 32.50. BOARS. 350-650 LBS. TO 27.50.

STOCK CATTLE: STEERS 350-550 LBS. 78.00-92.00.

HEIFERS: 350-500 LBS. 67.00-70.00. BULLS: 350-500 LBS. 75.00-83.00.

LAMBS: 70 LBS TO 77.00.
PIGS AND SHOATS: 18 HEAD. BY THE HEAD FROM TESTED HERDS, 30-45 LBS. 26.00-36.00.

HATFIELD QUALITY MEATS WEIGHT AND GRADE PROGRAM...BASE PRICE AT PLANT 45.25 PLUS BONUS ON QUALITY HOGS. BUYING STATION WILL NOT BE HELD TUES., MAY 31.

Valley Stockyards

Athens, Pa.

Monday, May 23, 1994

Report supplied by auction
HOLSTEIN HEIFER CALVES TO 222.50.

VEAL CALVES TO 85.00.
VEALER BULL CALVES 125.00-167.50.

SLAUGHTER CALVES 85.00 AND DOWN.

GRASSERS & FEEDERS 50.00-84.00.
LAMBS 65.00-80.00.

SHEEP 21.00-37.00.
HOGS 200-250 34.00-38.50.

SOWS TO 25.00.
BOARS 22.00-28.00.
PIGS TO 25.00.

HEIFERS 48.00-52.00.
STEERS, NO TOP STEERS.
FEEDER STEERS 55.00-82.00.

BULLS 48.00-62.00.
GOOD COWS 45.00-48.75.
COWS MEDIUM 43.00-45.00.

COWS POOR OR SMALL 40.00 AND DOWN
CATTLE MARKET STEADY.

CALF MARKET HIGHER.
HORSES TO 660.00.
PONIES TO 190.00.

GOATS TO 107.50.
MARKET STEADY, CALVES STRONGER.

Special Sale

Mules, Work and Driving Horses

New Holland Sales Stables
New Holland, PA

Friday, May 20, 1994

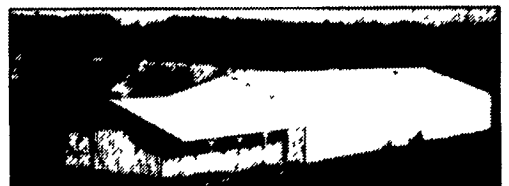
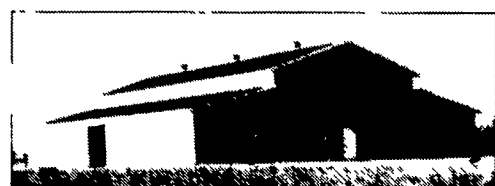
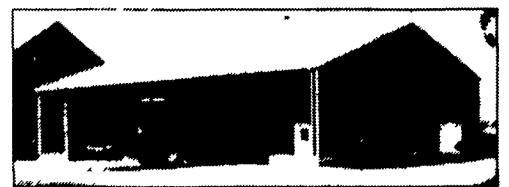
Report Supplied by Auction

171 HEAD.
ONE LOAD OF WORK HORSES, VIRGINIA, SINGLES 900.00-1700.00.

NEW YORK DRIVING HORSES: 925.00-1350.00; OHIO 850.00-2300.00; NEW JERSEY 1100.00-2150.00; PENNSYLVANIA 850.00-2300.00; NEW YORK 1300.00-2400.00; PENNSYLVANIA 825.00-2450.00; OHIO 925.00-1750.00; LOCAL DRIVING 675.00-1000.00.

LOCAL WORK HORSES, SINGLES 875.00-1200.00; MULES, SINGLES 875.00-1150.00, FEW PONIES 475.00-750.00.

Engineered For Life On The Farm.



Choose from a wide range of standard or custom Lester wood frame agricultural buildings. Each features value engineered Uni-Frame® construction. Top quality materials. The industry's leading warranty

And the support of the nation's leading building company
Reap the benefits of quality, affordable storage
Call your local Lester dealer or 1-800-826-4439 today.

THE BRAND THAT MAKES THE DIFFERENCE.



LESTER BUILDING SYSTEMS
A Division of Butler Manufacturing Company

COUNTRY CONSTRUCTION
Montoursville, PA
(717) 368-3615

LEBANON BLDG. SYSTEMS, INC.
Lebanon, PA
(717) 272-4449

H.R. WEAVER BUILDING SYSTEMS
Annville, PA
(717) 838-3753

RASCHE BROTHERS INC.
Taneytown, MD
(410) 758-4457

DELAWARE VALLEY STRUCTURES, INC.
West Chester, PA
(610) 344-7242

NAZARETH BUILDING SYSTEMS
Nazareth, PA
(610) 837-7700

UMBAUGH BUILDINGS
New Oxford, PA
(717) 624-4112

WISE CONSTRUCTION GROUP
Centre Hall, PA
(814) 384-9995

REYNOLDS & YELLOTT CO., INC.
Reisterstown, MD
(410) 833-1840

FOUR COUNTIES CONT., INC.
Coalport, PA
(814) 672-5751

ROBERT R. SMITH & SONS
Winterford, PA
(814) 825-5828

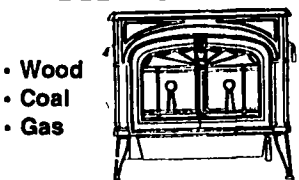
VALLEY VIEW CONST., INC.
Morgantown, PA
(610) 288-5407

GOMPFF CONST. CO.
Street, MD
(410) 692-5350

MATTSON ENTERPRISES, INC.
Mt. Holly, N.J.
(609) 281-3800

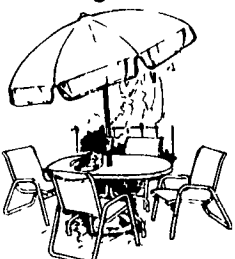
LOOKING FOR...

- STOVES • HAMMOCKS • GAS GRILLS
- PATIO FURNITURE & MUCH MORE.



Hammock Prices From \$27-\$150

Vermont Castings
Starting At \$799



Ducane®
Grill Prices Start At \$379

Patio Furniture By Telescope, Samsonite And Halcyon

Hearth Products • Gas Grills • Casual Furniture

906 E. Main St. (Rt. 322) Ephrata, PA
1 Block East of Rt. 222

(717) 733-4973
1-800-642-0310



Mon., Tues., Wed. 10 to 6; Thurs., Fri. 10 to 8; Sat. 10 to 4