

Leola Produce Auction

Leola, PA
May 24, 1994

Report Supplied by Auction

ASPARAGUS: 1.25-1.40 12 OZ. BUNCH, 1.10-1.35 LB. LOOSE.
LETTUCE: BUTTERCRUNCH 2.75-4.25 12-18 CT., GREENLEAF AND RED LEAF 5.00-6.75 24 CT.
SUGAR PEAS: 31.00-41.00 10 LBS RHUBARB: 5.50-10.50 15 LBS.
SPINACH: 4.25-8.00 1 1/9 BU.
ONIONS: 11.25-15.00 40 CT. BUNCH.
TOMATOES: HOTHOUSE 11.00-13.50 10 LBS. #1, 28.00-42.00 25 LBS #1
RADISHES: 9.00-13.50 40 CT. BUNCH.
VEGETABLE PLANTS: CABBAGE, LETTUCE, BROCCOLI, AND CAULIFLOWER 2.25-5.50 FLAT; TOMATOES, PEPPERS, AND EGGPLANT 3.25-6.50

FLAT PATIO TOMATOES: POTTED .65-.95 EACH.
CANTALOUPE, WATERMELON, AND CUCUMBER PLANTS: 3.50-7.50 FLAT.
BEDDING PLANTS: ASSORTED 3.50-7.50 FLAT.
GERANIUMS: POTTED .95-1.75 EACH 4-6" POT.
GERANIUM AND TUBER BEGONIA HANGING BASKETS: 5.25-7.75 8-10" POT EACH.
DAHLIAS AND BEGONIAS: 9.50-14.00 FLAT, 18 CT.
HANGING BASKETS ASSORTED: 3.75-5.50 8-10" POT EACH.
HERBS AND PERENNIALS: 10.00-13.75 FLAT 18 CT.
PANSIES: 2.50-5.50 FLAT.
POTTED HOSTA: .85-1.25 EACH.
PLANTERS: FLOWERS 3.50-7.25 MEDIUM SIZE, 7.00-16.00 LARGE TO EX LGE.
FUCHSIA: HANGING BASKETS

4.75-5.75 EACH.
VINCA: 8.00-14.00 FLAT.
WATERMELON, CANTALOUPE, CUCUMBER PLANTS: 3.50-7.50 FLAT.
ARBORVITAE: GLOBE 2.75-5.25, PYRAMID 5.00-11.00 EACH.
BLUE SPRUCE: 22.00-29.00 EACH;
RHODODENDRON: 7.50-11.00

EACH.
ALBERTA SPRUCE: DWARF 14.50-17.00.
JAPONICA: WHITE AND PINK 6.75-9.50 EACH.
YEWS: UPRIGHT AND SPREADING 3.25-5.75 EACH.
MUGO PINE, DWARF: 3.75-5.50 EACH.

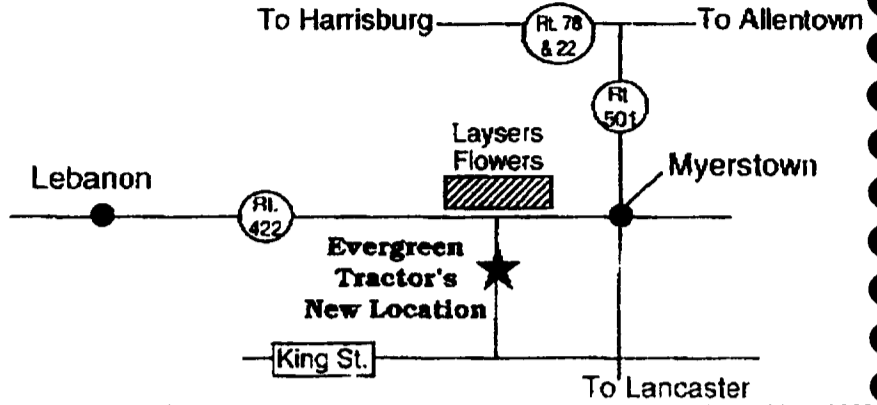
HEMLOCK: 7.00-7.50 EACH.
BLUE RUG JUNIPER: 1 GAL. POT 1.75-3.50 EACH.
BARK MULCH: 1.60-1.80 2 1/4 CU. FT. BAGGED.
NO SALE MONDAY, MEMORIAL DAY. SALE DAYS NEXT WEEK TUES., THURS., AND FRI. AT 10:00 A.M.

WE MOVED!

Evergreen Tractor

41 S. Fairlane Ave. • Myerstown, PA 17067

717-272-4641 • 717-866-2585 • 1-800-441-4450



TRACTORS:

Farmall 656 Diesel Hydro Row Crop.....\$6,450
JD 4020 WF Diesel, Sharp.....\$9,450
JD 4020 Syncro, Narrow Front, Nice.....\$8,950
JD 4230 Quad, Year-Round Cab, Fresh Engine.....\$13,700
JD 1010 Special.....\$3,950

USED SKID STEER LOADERS: & ATTACHMENTS

COMBINES & PICKERS:
6620 Side Hill, turbo hydro, heater & air, monitor, spreader.
JD #343 3 Row 30" Corn Head.....\$3,650
JD 653 6 Row 30" Bean Head.....\$2,450
JD 13' Quick Tach Rigid Grain Head.....\$1,850
JD 444 4 Row Wide Corn Head.....\$3,650
JD 213 Rigid Head For Side Hill.....\$2,650
MF 410 Gas Combine w/Platform And 4 Row Wide, Nice
JD 4400 Del. Combine, New Engine
6600 Straw Spreader.....\$275

HAY & FORAGE EQUIPMENT:

JD 1 Row, Row Crop Attachment, Nice.....\$550
JD 5 1/2' Pickup Attachment
NH 1010 Bale Wagon.....\$4,350
NH 268 Baler w/Ejector
JD #30 Hydraulic Bale Ejector.....\$1,500
Heaton 1091 Mower Conditioner.....\$2,950
Owatonna 320 Stacker.....\$1,550
NH 495 12' Haybine.....\$4,850
Side Mtd. Hydraulic Drive Highway Mower.....\$1,250
JD 3 Row Row Crop Atch. 30" For Harvester.....\$4,450
NH 770 Harvester With 2 Row Wide Corn Head And Pickup.....\$4,450
IH 430 Baler w/Thrower
JD 35 Harvester With Pickup
Wheel Rake.....\$425
Heaton PT 10 Haybine.....\$950
JD 2 Row 30" Row Crop Atch. For Harvester
JD 3950 Harvester, Sharp
JD 1209 Mower Conditioner.....\$1,650
JD 346 Baler w/#30 Ejector.....\$5,850
NI 402 Rake.....\$850
Heaton 1014 12' Hydro Swing Mower Conditioner.....\$4,250
Wooden Bale Body w/Gear.....\$955
MC Fiall Chopper, Like New.....\$1,575
JD 35 Harvester, 540 PTO w/1 Row Row Crop.....\$1,550
Heaton Stack Mover.....\$375
JD 1219 Mower Cond. w/Stub Guards.....\$4,250
JD 25A Fiall Mower, Nice.....\$1,275
NH 450 3 Point Mower.....\$950

PLOWS-MOLDBOARD AND CHISEL:

IH #55 11 Tooth Pull Type Chisel.....\$1,850
IH 9 Tooth 3 Pt. Chisel.....\$1,650
JD 7B 2500 Plow.....\$3,950
JD 1450 8-16" Semi-Mtd. Plow.....\$2,250
JD 1B Roll-Over Plow.....\$1,250
IH 9 Tooth Pull Type Chisel.....\$1,850
JD 2700 6B Auto Reset On-Land Plow.....\$7,450
JD 3200 6x18" Pull Type Auto Reset Plow.....\$3,950
Artsway 12 Ft. 3 Pt. Chisel.....\$1,850
JD 5B Semi-Mtd. Roll-Over Plow.....\$4,850
JD 2700 5x18" Auto Reset Plow.....\$4,500
JD 2500 5x18" Auto Reset On-Land Plow.....\$2,950
IH 710 4-16" Auto Reset Semi-Mtd. Plow.....\$2,450

ROLLER HARROWS AND CULTIMULCHERS

Coming In...
8' Grimm Hay Tedder
JD 7000 4 Row Conservation Planter, Dry Fert., Sharp
JD 1008 10' Rotary Cutter
Century 200 Gal. Mtd. Sprayer, 40' Boom, Hyd. Pump
JD 7020 Cab, 24.5x32, 3 pt. PTO, Dual Remote
JD 1020 Gas w/48 Loader and Direction Reverser
JD 37 Loader w/Hydraulic Bucket

CULTIPACKERS

Brillion 10' w/Big Shaft.....\$950
Brillion 12' w/Big Shaft.....\$1,250
Brillion 12' Packer w/Transport.....\$1,850
JD 12' Packer.....\$1,250

DISCS AND FIELD CULTIVATORS

JD 210 14' Black Gang Disc.....\$3,850
JD 18' Field Finisher.....\$1,450
18' Wing Fold Field Cultivator S-Tines.....\$950
JD 235 27' Wing Fold Disc.....\$6,500
JD 210 11' Disc, Nice.....\$2,450
JD 4 Row RM Cultivator.....\$1,050
Taylorway 20' Hyd. Fold (narrow) Field Cultivator, Tine Harrow.....\$2,450
JD KBA 28 Disc Wheel Carrier.....\$825

PLANTERS & GRAIN DRILLS:

JD #300 21x7 DD Drill.....\$3,450
Oliver 13x7 Grain Drill SD w/Grass, Nice.....\$1,150
MF #43 21x7 Plain Grain Drill.....\$1,050
JD 7000 6 Row Planter, Dry Fertilizer.....\$7,450
JD 23x7 DD Drill w/Press Atch.....\$4,850
JD 11 Row 15" Bean Planter.....\$1,575
JD FB-B 17x7 Drill w/Grass, Nice.....\$1,850
JD 7000 6 Row Planter w/Dry Insect. And Monitor.....\$4,250
6 Each 7000 Planter Units.....Each \$575
IH 800 4 Row Plate Planter, Dry Fert. Monitor.....\$4,250

ROW CROP CULTIVATORS & ROTARY HOES

JD 8 Ft. 3 Pt. Rotary Hoe.....\$650
JD 6 Row RM Cultivator.....\$1,250
JD 4 Row RM Cultivator.....\$1,050
JD Ft. Mtd. 4 Row Old Style Cultivator.....\$450

MISCELLANEOUS:

Transcraft 42' Drop Deck Trailer, Air Ride, Nice.....\$8,500
Pull Type Spin Spreader.....\$300
Several Electric Golf Carts With Chargers.....Each \$750
New Idea 244 Tandem Axle Spreader.....\$2,450
JD 37 Loader For Utility.....\$750
8 H.P. Trash Pump.....\$550
3 Pt. Box Scraper.....\$625
JD HD Quick **SOLD**.....\$375
7' Rhino Heavy Duty Blade.....\$975

USED PARTS FOR THE FOLLOWING MACHINES: 1-800-441-4450

- 2500, 2600, 2700 & 2800 Plows
- F350 Hydraulic Reset Plows
- Cultivator Parts
- Grain Drills
- Trip Plows
- Disc Harrows
- Cultipackers and Roller Harrows (John Deere and Brillion)
- 35 and 3800 Harvesters
- Grain Platform
- Combine Corn Head

We Ship UPS Daily

This is a partial listing. Please call for availability even if your machine is not listed.

We Ship UPS Daily



Doebler's Seed Corn and Alfalfa in Stock

Get Ready For Your Spring Planting.

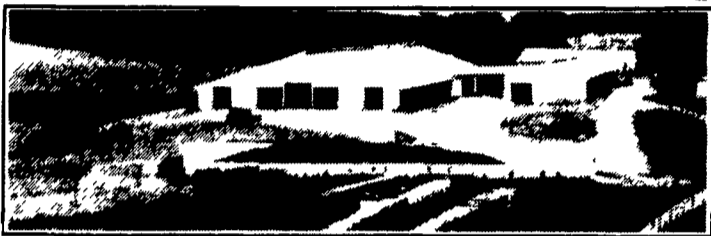


bobcat

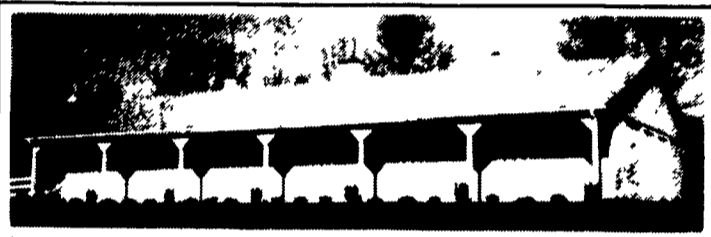
Store Hours
PARTS- Mon. Thru Fri. 7:30 A.M. To 4:30 P.M.
Sat. 8:00 A.M. To Noon
SERVICE- Mon. Thru Fri. 8:00 A.M. To 4:30 P.M.

AGRI-INC.

Custom Built Farm Buildings
Designed To Your Needs



DAIRY COMPLEX



HORSE STALL BARN

Let Our Experience Work For You

- Dairy Complexes And Replacement Stock Facilities
- Horse Stall Barns And Riding Arenas
- Workshop And Machinery Storage Buildings
- Timber Column Buildings For Light Commercial



AGRI-INC. The Construction Professionals

151 E. Farmersville Rd., Ephrata, PA 17522
(717) 354-4271

Serving The Agricultural Industry For Over 25 Years



Bill Mullin Owner

Call the Horse Fence People for lasting quality and low prices.

- Superior Fencing and Lumber For Farms, Homes & Estates
- Split Board, Post & Board, Split Rail, and many others
- Custom Fences and Gates
- Vinyl, Wire, and KeepSafe
- Wood and Metal Gates
- Jump Rails and Standards
- In-ground Warranties
- Competitive Pricing
- Professional Installers & Delivery Available
- Deck & Barn Lumber
- Landscape Timbers
- Huge Inventory Year-round

Horse owners across America call us for advice and superior fencing materials at great prices -- because we are the Horse Fence People. Call toll-free today for your free copy of "How To Select The Right Fence" and more information.

1-800-441-5832

STOCKTON
FENCE & LUMBER

Stockton Supply Company, 1297 Kelsall Road, Box 718, Unionville, PA 19375 (610) 347-1730