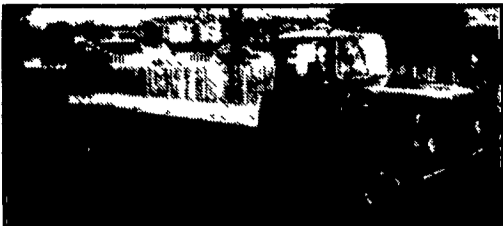
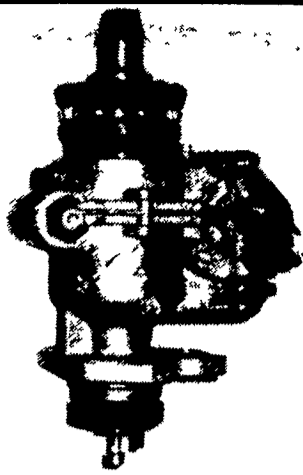


1971 FORD L-800



391 V8 5-Spd w/2spd rear Heavy GVWR, Air Brks, 10:00x20 Tires, 23' J&J Bed Truck & Bed perfect Cond. Ideal Hay Tk, latest PA Ins. Looks & Runs like New! Metzler Auto Sales Martinsburg, Pa. 16662 (814) 793-3725



INJECTOR PUMPS

New 6.2L Diesel - GM Mod #2829 - 4153

Only \$229.00 + Shipping
UPS Shipping/Visa • MC

CS COLEMAN
717-692-4444

ALUMINUM UTILITY TRAILERS

- 5'x8' Single Axle Tilt Deck, Wood Slatted Sides, 2000# GVW \$1,095
- 5 1/2' x8' Single Axle, Solid Aluminum Sides, 3000# GVW, Standard 8' P/U Cap Fits This Model..... \$1,295
- 77"x10' Single Axle Tilt, 2500# GVW, Wood Racks Available \$1,395
- 77"x12' Single Axle Tilt, 2500# GVW Wood Racks Available \$1,595
- 77"x12' Tandem Axle Utility, 5000# GVW, Surge Brakes, Wood Racks And Ramp Gate Available \$2,275
- 77"x16' Tandem Axle Utility, 5000# GVW, Surge Brakes, Ramp Gate \$2,930



Hostetler Truck Bodies & Trailers
Rt. 322 Milroy, PA 17603
(717) 667-3921

CASH FOR USED DIESEL TRUCKS!

WE NEED 1/4 TON TO ONE TON:

- FORD DIESELS
- SUPERCABS
- CREW CABS
- DODGE CUMMINGS
- 2WD or 4x4
- DUALIES
- DUMPS
- UTILITY BODY
- FLAT BEDS
- CAB & CHASSIS

PLEASE! PLEASE! PLEASE!

Before you sell or trade your diesel in somewhere else for LESS, CALL US!

We Pay More For Used Diesel Trucks Than Anyone.

TRY US!

717-949-2000
Ask for Smokey or Kay



RD 7, Box 405
Lebanon, PA 17042

TRAILER HITCHES - Wholesale & ACCESSORIES Outlet -

Heavy Duty Truck Hitches, Vans, 4x4's, Motor Homes

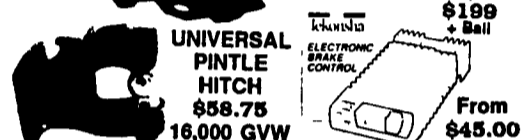
Class III Hitches Most \$59.95
Class IV Hitches Most \$87.54



Chrome Trailer Balls 1-7/8" \$4.40 7" \$23.40 2" \$4.85 12" \$36.00 2" BOX HITCH \$22.00



GOOSENECK HIDE-AWAY \$90.00



UNIVERSAL PINTLE HITCH \$58.75 16,000 GVW

QUAKERTOWN COLLISION
- WE INSTALL -
Thousands Of Parts In Stock - Buy Below Dealer Cost U.P.S. C.O.D. Shipments
250 S. Front Street
(215) 536-2548

JONES GM PARTS CENTER

IS YOUR

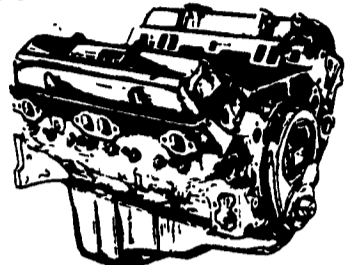
Goodwrench ENGINE HEADQUARTERS

GM GOODWRENCH 350 V8 1973-85
Part Number 10067353

New Engine - Not Rebuilt
36 Month or 50,000 Mile Warranty

\$1199⁰⁰

New Engine - No Core Fee



HIGH PERFORMANCE ENGINES NOW IN STOCK

350-300 H.P. — \$1695⁰⁰ 350-345 H.P. — \$2825⁰⁰

Call 394-0711 for prices on other New or Remanufactured Goodwrench Engines. 2.5 Liter thru 454 cid. Gas and Diesel

Chevrolet - Pontiac - Olds - Buick - Cadillac - GMC

JONES GM PARTS CENTER

1335 Manheim Pike, Lancaster, PA 17604

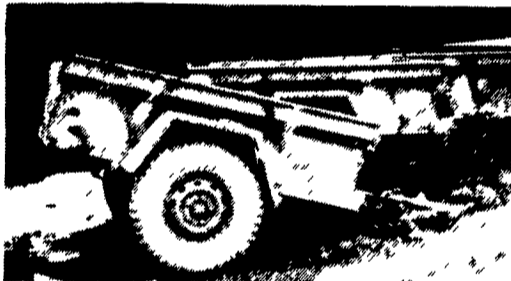
Hours: Mon.-Fri. 7:30-5
(717) 394-0711



Mr. Goodwrench



UTILITY TRAILERS

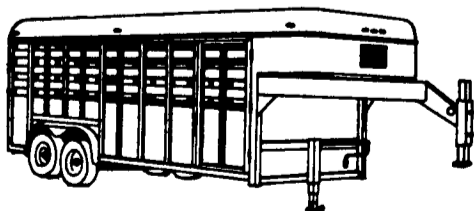


1/4 Ton - Govt. Issue
4'x6' Box

Only \$395.00
Visa • Mastercard
CS COLEMAN
717-692-4444

SAVE \$400.00

Time Is Running Out To Take Advantage Of Moritz's "Factory Rebate Offer" On Selected Goosenecks!!



6'8" wide x 7' high x 16' long \$4,450
7' wide x 7' high x 16' long \$4,595

These Prices Won't Last Much Longer And You Will Never Be Able To Buy A New Moritz Gooseneck For This Price Again!!

Call For More Details and Specs.



Hostetler Truck Bodies & Trailers
Rt. 322 Milroy, PA 17603
(717) 667-3921

JONES BEST BUY USED CARS

JONES
PONTIAC • HONDA
GMC TRUCK
1335 Manheim Pike, Lancaster
394-0711

#9366 '92 OLDS CUTLAS SUPREME SL COUPE Red, Most Factory Power Options, Only 12,000 Miles Orig. List \$13,900	#3975 '89 CAMARO IROC 5-7 Eng., auto, T-Top	#3968 '87 BONNEVILLE ROADSTER Auto, Most Factory Power Options, Only 20,000 Miles NOW \$7,995	#9382 '91 GRAND AM LE 5 Speed, PS, AC, Stereo/Cassette Orig List \$9,995 NOW \$8,995
#9348 '93 FORD ESCORT GT HATCH BACK P.S., A/C, Stereo/Cassette Orig. List \$10,995 NOW \$9,995	#9281 '90 VOLVO 740 GL 4 Dr., Most Factory Power Options. Orig. List \$13,900 NOW \$12,200	#9334 '90 GRAND AM LE 4D Auto, PS, AC, Stereo/Cassette Orig. List \$8,995 NOW \$7,995	#3972 '86 OLDS REGENCY Auto, Most Factory Power Options, Black NOW \$5,995
#9361 '89 SUNBIRD CONVERTIBLE Most Factory Power Options. Orig. List \$11,900 NOW \$10,500	#9300 '88 CHEVY NOVA 4 Dr., PS, A/C, Stereo/Cassette Orig. List \$6,500 NOW \$5,500	#9329 '88 OLDS DELTA 88 Maroon, Only 40,000 Miles, Most Factory Power Options. Orig. List \$8,500 NOW \$7,500	#9323 '91 FORD TAURUS GL STATION WAGON Most Factory Power Options. Orig. List \$12,500 NOW \$10,995
#9305 '92 CHEVY LUMINA Z-234 COUPE Black, Most Factory Power Options. Orig. List \$15,500 NOW \$13,995	#9313 '92 FORD PROBE LX COUPE Most Factory Power Options. NOW \$10,500	#9351 '92 BUICK LeSABRE Most Factory Power Options. Orig. List 15,500 NOW \$13,995	#9363 HONDA ACCORD EX 4 Dr., Most Factory Power Options. Orig. List \$14,900 NOW \$13,800

Prices Based on Straight Sale. Tax & Tags Extra
This Ad Must Be Presented At Time Of Deal For Sale Price