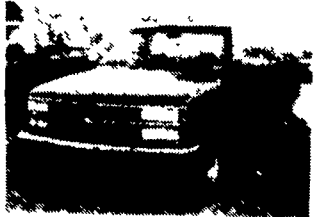


USED TRUCKS



91 Chev 3/4 Ton Silverado, 305 FI, Auto w/OD, PS, PB, AC, AM & FM Cass, 52,000 Miles.

\$12,700.00



94 Chev. Ext. Cab, Dually, Silverado 6.5 Turbo Diesel, 5 Spd., PS, PB, AC, Cruise, Tilt, PW, PDL, Bucket Seats, Console, AM & FM Stereo Cass., 600 Miles.

\$29,600.00

Financing Available

MARTIN'S AUTO SALES

1025 W. Main St., New Holland, PA 17557
(717) 656-6621

(800) 533-3837

YOUR DIRECT LINE TO GENUINE GM PARTS

When you call the number listed above you'll reach our wholesale parts specialists, who can help you keep your GM repair work moving quickly. Ask About:

- Specializing In GM Medium Duty Trucks, Current and Obsolete.
- \$500,000 Parts Inventory
- Parts Locator For Those Hard To Find Items
- We Ship Anywhere. Local Delivery Available.
- Experienced, Knowledgeable Personnel.

LEFEVER BROS.
DILLSBURG

(717) 432-9697

Quality Dealer Since 1921
406 U.S. Route 15 • Dillsburg, PA 17019



Mr. Goodwrench

R & R CAR AND TRUCK CENTER

1657 Rohrerstown Road, Lancaster, PA



1985 Chevrolet Custom Deluxe 30, 350 V8 Gas, 4 Spd., P/S, P/B, 10,000 GVW, 12' Van Body, Dual Wheels 75,000 Miles
Selling Price
\$4,900

Vans, Reefer, Platforms & Dumps, Many Sizes To Choose From.
Call For Details



1988 FORD F600, 6 Cyl. Diesel, 5 Spd., P/S, Hyd. Brakes, 23,100 GVW, No CDL., 14' Van With CSD, New Insp.
Call For Details

Call Ray Leed 717-560-4901

Melard's Truck & Auto Sales

955 East Main Street
Ephrata, PA 17522
(717) 738-4870

- 1990 Chevy Astro, Elec. Window Locks, Cruise, Tilt, AC, Privacy Glass, AM-FM Cass., 51,000 Miles, Charcoal & Silver.....\$10,900
- 1991 Dodge Grand Caravan, 3.3 Auto Air Cruise, Tilt, Elec Locks, Privacy Glass, Maroon, 55,000 Miles.....\$12,800
- 1989 Plymouth Grand Voyager 3.0 Auto, Air, Cruise, Elec. Locks, 52,000 Miles, Black, Factory Warranty.....\$10,400
- 1988 Delta 88 Royal Brougham, 4 Dr., 3800 Engine, Auto, Climate Control, AM-FM Cass., Elec. Windows, Locks, Seat, 71,000 Miles, Local Trade, Black.....\$5,800
- 1992 Lumina Euro 2 Dr. 3.1 Auto, Tilt, Cruise, Air, AM-FM Cass., Elec. Windows & Locks, 22,000 Miles, Black, Special.....\$11,500
- 1989 Dodge Caravan 3.0 Auto, Air, 7 Pass, Cruise, 60,000 Miles, Factory 770,000 Mile Warranty

EXT. CAB 3/4 TON



1988 GMC SIERRA SLE 2500 Ext. Cab, 350 EFI Engine, Auto w/OD, Air, PS, PB, PW, PDL, Tilt, Cruise, 8 Ft. Bed, Class III Hitch, Bed Liner, 71,000 Miles
\$10,800



PINE TREE MOTORS

Rt. 322 & Clearview Road, Clay Lancaster Co., PA
717-738-2242



1968 MACK DM607S Tandem Cab & Chassis, 237 Mack, 5x3 Trans, Double Frame, 18F-44R, 134" Cab to Center of Tandems
\$8,500
Call 1-800-345-2829
Curry Supply Co.
Curryville, Pa.

Mark VII's • Pickups • Broncos • Stake Body • Crew Cabs • Crew Cabs

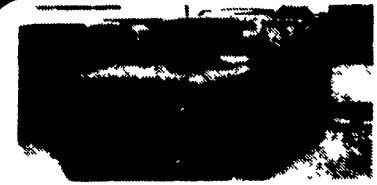
LYNXS • TOPAZ • Diesel Pickups • Mustangs • Thunderbirds

Marquis • Grand Marquis • XLTS • Custom Vans

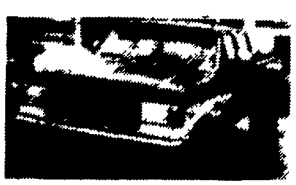


Large Selection
New & Used
F-350 - Duallys

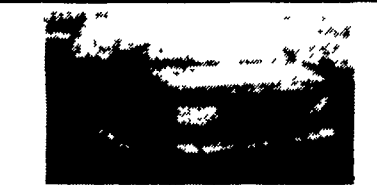
Diesel & Gas



'92 FORD EXPLORER XLT, 6 Cyl., AT, #4455B
\$21,999



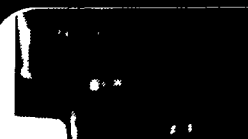
'91 FORD F350 Dually, Crew Cab, 7.3 Diesel, AT, Loaded #P1842
\$20,399



'92 FORD E350 CLUB WAGON XLT V8, AT, Dual Air, 15 Passenger #P1841A
\$16,999



'92 FORD E150 Cargo Van, 6 Cyl., AT, 1 Owner, #P1899
\$14,493



'93 FORD F150 Lightning, 8 Cyl., AT, AC, Loaded 12,000 Mi. #4278B
\$16,999



'92 MITSUBISHI EXPO-SP 300 CID, 6 Cyl., 5 Spd., 38,000 Mi. #4645A
\$8,999



'88 FORD AEROSTAR V6, AT, AC, 49,000 Mi. #4593A
\$9,699



'91 CHEVY C1500 Flareside, 6 Cyl., 4 Spd., A/C, Low Miles #4687A
\$11,388



'90 FORD E250 CLUB WAGON 12 Passenger, 5.8 V8, AT, Dual Air #P1854
\$13,999



'92 DODGE DAKOTA 4 Cyl., 5 Spd., Cassette, #P1833A
\$8,799



'91 CHEV GEO TRACKER 4x4, Convertible, 5 Spd., PS, #4461A
\$8,999



'91 FORD EXPLORER XLT, 6 Cyl., AT, Low Miles, #4661A
\$18,920



'89 DODGE POWER RAM 4 WD, 150 LE, Loaded, Trailer Tow #4591C
\$11,999



'92 FORD EXPLORER 4 Door, Loaded, Red #4582A
\$21,999

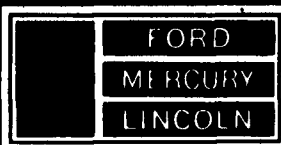


'92 FORD F150 XLT 5.0 V8, AT, 2-Tone Alum. Cap, #4274A
\$15,999



'93 FORD F150 XLT V8, AT #4333A
\$16,999

Unless the Sheehy Emblem is on Your Car or Truck...You Probably Paid too Much!



LEBANON

-20th & CUMBERLAND STS. - RT. 422 WEST
9-9 DAILY; 9-5 SATURDAY · SHEEHY HOTLINE : (717) 272-7671 OR 533-5293

PARTS DEPT. OPEN
DAILY 8-5
SAT 8-12
717-273-8168

Tempos • Cougars • Continentals • Town Cars • 4x4s • Box Vans • Rangers