



(1) 1982 MACK MH TRACTOR E9-440, 10 Spd, 38,000 Lb Axles On Air Ride, Low Miles On O H. Engine, Good Cond. (1) 1984 MACK MH (Not pictured) E6-300, 9 Spd., 34,000 Lb Axles On Spring Susp. VERY NICE.



1986 NISSAN UD, 30,000 Lb. GVW, Diesel, 5 Spd., PS, 22' Van w/Side Door
1987 MACK MS-200, 30,000 Lb. GVW, Diesel, 5 Spd., PS, AC, 22' Van w/Side Door.



1986 IVECO 11,600 GVW, Diesel, 5 Spd., PS, 14' Van Body, RUNS GOOD - MAKE OFFER.

HOLLINGER MACK, INC.

126 Keller Avenue
P.O. Box 4455
Lancaster, PA 17604
717-393-3633 800-545-4992
717-393-2042 Fax
717-354-8637 Res.



1989 International S1954 with 28' Steel Flat Bed, DT466 Diesel 210 HP. 7 Speed, P.S. Air Brakes, 35,000 GVW.

\$21,500

Call 1-800-345-2829
Curry Supply Co. Curryville, PA

'75 International, 1950B 8000 gal. aluminum tank trailer w/6 compartments, V8 diesel, 36,000 GVW, inspected, road ready \$4500. 610-932-4019. \$4200. 717-534-1253



DUMP TRAILERS

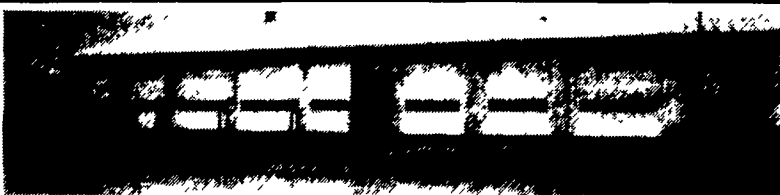
Self-Contained Removable Sides Electric Brakes

Size	GVW	Price
6x10	7,000	\$2,995
6x10	10,000	\$3,400
7x12	10,000	\$4,500

Closed Memorial Day May 30th and 31st

Ringo Hill Farms

Equipment Co., Inc.
1624 Route 212 * Quakertown, Pa. 18951
Phone: (610) 346-7340 Fax: (610) 346-8041



J & B Auto Body now offers sandblasting on all sizes of equipment and flat bed trailers.

We offer 2 day turnaround service.

J & B is a full service paint and body shop for all types of vehicles and equipment

Please call (717) 656-0064 for an appointment

J & B AUTO BODY

7 WEST EBY ROAD, LEOLA, PA 17540
(717) 656-0064

Free Estimates

PA State Inspection

- 1992 Chevy Lumina 4 Dr, V6, AT, AC, CR, Tilt, AM-FM Cass, Blue, 53,000 Mi.....\$8,800
- 1992 Chevy S-10 Tahoe PU, V6, 5 Spd, AC, AM-FM Cass, Maroon, 67,300 Mi.....\$7,900
- 1991 Ford Escort LX, 2Dr, 4 Cyl, 5 Spd, AC, AM-FM Cass, Red 49,800 Mi.....\$5,500
- 1990 Chevy Beretta GT 3.1, V6, 5 Spd, AC, AM-FM Cass, Black, 73,600 Mi.....\$5,900
- 1990 Honda Accord LX 2 Dr, 4 Cyl, 5 Spd, Loaded, Gray, 74,000 Mi...\$8,500
- 1990 Chevy 20 Cargo Van, V8, AT, AC, AM, White, 70,000 Mi.....\$8,500
- 1990 Chevy Beauville 8 Pass, V8, AT, Loaded, Black-Gray 103,400 Mi...\$7,900
- 1989 Chevy 1500 Silverado PU, 6.2 Diesel, AT, Loaded, Black 43,500 Mi.....\$10,900
- 1989 Chevy 1500 Silverado 4x4 6.2 Diesel, AT, Loaded, Maroon-Silver 158,700 Mi.....\$7,900
- 1989 Chevy Astro Cargo Van V6, AT, AC, AM-FM, Gray, 85,600 Mi.....\$5,900
- 1988 Ford F250 XLT Lariat, 8600 GVW V8, AT, Loaded, Green, 105,700 Mi.....\$7,800

Brubaker's Auto Sales
Myerstown, PA
717-866-5237

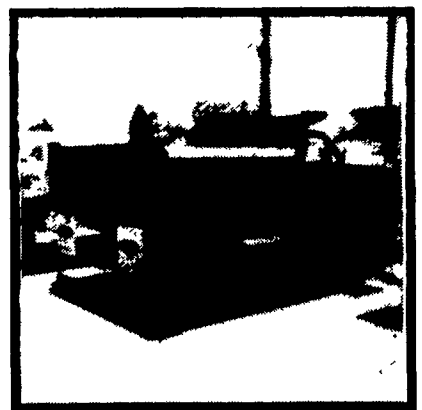
Ford TRUCKS BEANS MEANS TRUCKS!



NEW 1994 FORD
F-350 W/ 12' STAKE BODY TRUCK
5.8 L V8 eng, auto trans, 11,000 GVWR, 161" WB, 12' x 96" platform wood flr, 40" steel rack sections. #5217

Orig. List \$22,358 • Save \$2432

\$19,926



NEW 1994 FORD
F-450 SUPERDUTY 4/5 YARD DUMP
7.3 L V8 diesel eng, 5-spd HD trans, 15,000 GVWR, 8 1/2 x 1/2 Gallon Super Dump, Stahl tool box. #5282

Orig. List \$29,414 • Save \$3031

\$26,383

Prices include incentives if applicable. Tax and title additional.

FRED BEANS
FORD OF WEST CHESTER
1155 West Chester Pike (Route 3)
West Chester PA

1-800-642-8605

Huntingdon Equipment

Rentals Available GOOD USED EQUIPMENT

Huntingdon Valley, PA

215-672-9667 • 1-800-543-3833 • Eddle



One Of Two 1987 Ford F-350, 460 Eng, 4 Spd, Great For Pulling Trailers



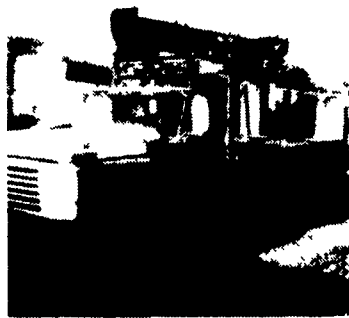
1970 Ford 800 V8 5 Speed with Aux. Trans, 39,000 GVW, VAC Brakes 13'4" Fran Fleet Maintained, 73,000 Miles.



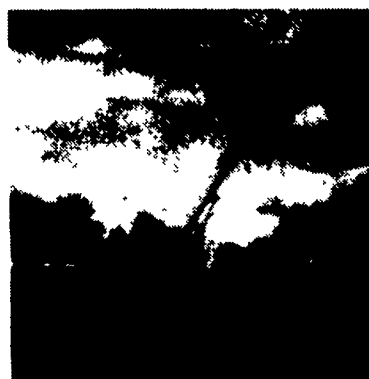
International Presser Digger This Unit Is Ready To Work, Priced For Quick Sale \$9,500 \$8,500



Holan 70' Double Bucket 75' working height mounted on 1981 Western Standard, 6x6 Flatbed, CAT 3208, Auto.



Need a Lift? We Have A Large Selection Of Boom Trucks Up To 14,000 lbs. Cap. Some With Post Diggers.



Bucket Trucks 28' to 65' Gas and Diesel. Call For Details.

DIGGER DERRICKS/AERIAL BUCKETS/UTILITY EQUIPMENT