

Top Pennsylvania DHIA Herds

(Continued from Page C4)

CAMERON

PINE GROVE DAIRY FAR 51.3 15799 536 3.4 500 3.2

CENTRE

JACOBIII+SALLY TANIS 96.3 25322 935 3.7 812 3.2
 TRINCA FARM 64.9 24558 921 3.8 791 3.2
 VALLEYS END FARM 65.6 25215 897 3.6 786 3.1
 JAY HOUSER 73.1 24369 948 3.9 776 3.2
 GRAHAMS FARM 100.1 23820 825 3.5 762 3.2
 STRINGERS SAND RIDGE 68.8 23534 880 3.7 761 3.2
 RICK HOMAN 69.6 23675 759 3.2 760 3.2
 VALLEY WIDE FARM 86.5 24363 877 3.6 758 3.1
 CARL R GATES 45.5 22292 792 3.6 739 3.3
 PAUL HARTLE 64.9 22773 864 3.8 722 3.2
 NED E DEITRICH 96.6 22083 806 3.6 716 3.2
 ORE BANK ACRES 97.4 22030 800 3.6 715 3.2
 ROBERT J MC COOL 74.6 22922 789 3.4 710 3.1
 FAIRBROOK FARMS 128.1 21884 847 3.9 705 3.2
 PAUL-DOUGLAS VONADA 66.4 22098 820 3.7 701 3.2

CHESTER

MELWOOD FARM 41.9 27544 1088 3.9 908 3.3
 CHARLES J MOORE 39.4 26357 830 3.1 814 3.1
 DUNWOOD FARM 56.4 24513 980 4.0 808 3.3
 MARILYN+DUANEHERSHEY 76.1 23538 866 3.7 760 3.2
 PEI-VALLEY FARM 80.5 23230 883 3.8 760 3.3
 ROL KELL PEN MOORE 26.0 24014 814 3.4 757 3.2
 TIM+PHYLLIS BARLOW 90.9 23846 838 3.5 748 3.1
 JOSEPH +SANDRA LUSBY 58.8 23056 895 3.9 745 3.2
 CHRIS+CHES STOLTZFUS 58.9 22828 823 3.6 732 3.2
 KEN+MARILYN UMBLE 80.7 22470 845 3.8 728 3.2
 RODNEY BARE 72.3 22607 856 3.8 723 3.2
 LEON D KURTZ 45.8 22093 784 3.5 718 3.2
 RICHARD HOSTETTER 42.4 22431 820 3.7 709 3.2
 BRECK-A-DE FARM 77.5 21991 825 3.8 705 3.2

CLARION

SOLID GOLD HOLSTEINS 76.4 25610 918 3.6 803 3.1
 KEITH E DECKER 57.2 23370 896 3.8 769 3.3
 LLO-TIM ACRES 47.4 22407 858 3.8 707 3.2

SANDY RIDGE FARMS 68.2 22062 776 3.5 699 3.2
 GENE PESEMYER 41.1 21390 802 3.7 669 3.1
 FROSTBURG FARMS 56.6 20728 757 3.7 658 3.2
 JOHN HENRY 95.5 20619 737 3.6 652 3.2
 NELSON E SMITH 49.3 20625 735 3.6 645 3.1
 ROBERT-LANE BYERS 47.8 18672 700 3.8 599 3.2
 CHAMPION FARMS 36.8 18817 651 3.5 591 3.1
 BASHLINES DAIRY 71.9 17690 618 3.5 566 3.2
 R DENNIS BROWN 26.7 17902 619 3.5 559 3.1
 FABER MANOR FARMS 97.7 17456 667 3.8 553 3.2
 DESTINY VALLEY FARMS 51.4 15741 633 4.0 525 3.3
 LIN DE DELL FARMS 50.1 16320 619 3.8 516 3.2

CLEARFIELD

HICKS DAIRY FARM 71.9 24259 806 3.3 780 3.2
 R WRIGLESWORTH & SON 59.5 22835 811 3.6 712 3.1
 CARL G BRINK + SONS 78.8 22292 770 3.5 699 3.1
 SANKEYCREST FARMS 21.3 20578 723 3.5 688 3.3
 BUNDY FARMS 65.2 20477 663 3.2 661 3.2
 ORNER FARMS INC 69.2 21458 830 3.9 655 3.1
 DENNIS PETERS 41.1 19759 689 3.5 635 3.2
 CURT YAPLE 50.5 19390 660 3.4 613 3.2
 PRISELAC DAIRY FARM 88.6 19135 660 3.4 593 3.1
 DETRICKS FARM 35.2 18126 691 3.8 567 3.1
 HUGHES FARM 30.0 16654 593 3.6 564 3.4
 JOHN SANKEY 36.8 18534 645 3.5 556 3.0
 RALPH MCCLARREN 32.0 17035 639 3.8 554 3.3
 BUNDY FARMS 10.8 14258 635 4.5 537 3.8
 MILCHAK DAIRY FARM 60.1 16099 604 3.8 513 3.2

CLINTON

PAUL L COURTER 73.0 22701 819 3.6 726 3.2
 KEITH AND BEN CARSON 66.8 22492 769 3.4 703 3.1
 DEANG+BRENDA DAUBERT 66.3 18476 717 3.9 644 3.5
 TONY CAROLINE GRAINE 27.8 19876 683 3.4 638 3.2
 ROBERT BILLMAN 28.9 19974 752 3.8 615 3.1
 ROLAND L IRVIN 53.9 17785 708 4.0 604 3.4
 JOHN+SHERI CHRISEMER 32.5 18750 713 3.8 599 3.2
 HAROLD D MOORE 69.8 18238 677 3.7 571 3.1
 GEORGE & PAY COURTER 32.6 17054 645 3.8 557 3.3
 RIDGE VIEW FARM 60.6 14957 615 4.1 491 3.3
 RON+BONNIE BECK 64.9 12234 565 4.6 445 3.6
 DALE + SUSAN JOHNSON 28.3 13687 468 3.4 420 3.1

Lancaster Farming, Saturday, May 21, 1994-C5

COLUMBIA

HUNTER CREST FARM 72.6 23876 813 3.4 767 3.2
 JAN JURBALA 43.5 21894 828 3.8 751 3.4
 RICHARD KRIEBEL 59.9 22680 746 3.3 729 3.2
 VALLEY STREAM FARM 69.4 21982 714 3.2 701 3.2
 JOHN W TUROFSKI 32.1 21325 826 3.9 696 3.3
 DUANE E SHUMAN 35.4 20465 705 3.4 678 3.3
 SHULTZ BROS 66.4 20239 828 4.1 673 3.3
 J ROBERT BOOK 51.2 20712 754 3.6 672 3.2
 KEVIN STAHLWECKER 48.6 20802 798 3.8 662 3.2
 LYONS DEN DAIRY 132.2 20174 712 3.5 651 3.2
 CLYDE BARTHOLOMEW JR 34.0 21035 801 3.8 650 3.1
 CARL R STACKHOUSE 46.6 19367 605 3.1 642 3.3
 BRUCE+BRENDAHEMSARTH 63.2 19203 734 3.8 623 3.2
 JOHN+LAUNE ZAGINAYLO 21.0 18539 721 3.9 600 3.2
 JAMES L KLINE 33.0 19045 666 3.5 590 3.1

CRAWFORD

LINZ FARMS 37.5 24910 919 3.7 784 3.1
 A & B DAIRY FARM 74.8 23136 876 3.8 717 3.1
 DAVID M NAUGLE 20.2 21799 833 3.8 696 3.2
 DALE HOME FARMS 37.1 19836 784 4.0 661 3.3
 POSTERS FAMILY FARM 49.4 19996 736 3.7 639 3.2
 EARL & LISA HAMILTON 68.4 20121 709 3.5 622 3.1
 MILTON L SCHWEITZER 55.9 19433 647 3.3 610 3.1
 LAST STOP FARM 21.6 18520 713 3.9 605 3.3
 W NORMAN WHEELER 44.9 16839 663 3.9 577 3.4
 SIDNEY MARTIN & SONS 73.4 17500 656 3.7 562 3.2
 CRAIG J HAYES 44.9 17495 645 3.7 558 3.2
 RON MCCORKLE 40.2 17541 613 3.5 540 3.1
 JOHN L KAPANICK 44.2 16220 640 3.9 515 3.2
 DONALD N BRIDGER 38.5 16019 574 3.6 502 3.1
 LAMB FAMILY FARM 28.3 15780 555 3.5 499 3.2

CUMBERLAND

AL HART HOLSTEINS 52.8 23584 708 3.0 755 3.2
 CURTIS + ANN DAY 54.6 22554 879 3.9 729 3.2
 STEVE + MARY REESE 32.6 22114 785 3.6 712 3.2
 J PAUL STROCK 113.5 22351 796 3.6 709 3.2
 HAROLD E MYERS 59.6 21672 815 3.8 709 3.3
 GLENN NEWSWANGER 83.6 21095 772 3.7 680 3.2

(Turn to Page D2)

**B
O
U
-
M
A
T
I
C**

Back To The Basics of Milking With... BOUMATIC

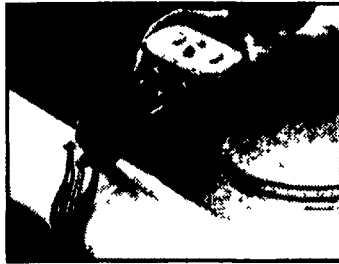
Good Milking Begins With A Truly Great Claw!



Flo-Star Claw

- Light weight for greatly reduced slips and fall-off.
- Milk flows away quickly from teats and prevents cross contamination.
- Won't flood out on fast, high producing cows.

Balanced Pulsation To Achieve Balanced Milk-Out!



Alternating Pulsation

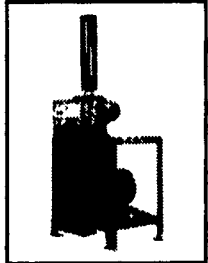
Problem:

Many other milking machines overmilk a cow's front quarters which may lead to mastitis, high cell counts & reduced milk yields.

Answer:

Bou-Matic's alternating pulsation & different front to back pulsation ratios balance the cow's natural milk-out.

Your Best Vacuum Pump Value!



Air-Star Pump

- Eliminates oil consumption and oily exhaust associated with oil vane pumps.
- Provides consistent vacuum with low maintenance.
- Extra tough high-temperature pump seals to withstand even the toughest operating conditions.

For Additional Information On BOU-MATIC's Basics Of Milking See Your Local Dealer.

ONES-DAIRY SERVICE
Medford, NJ
609-267-0198

W and J DAIRY SALES
Oxford, PA
717-529-2569

TRI-STATE FARM AUTOMATION
Hagerstown, MD
301-416-7340

PRINGLE FEED STORE
Greenville, PA
412-588-7950

K&K AGRI SERVICE
Carlisle, PA
717-249-1195

McNEAL FARM SERVICE
Towanda, PA
717-364-5460

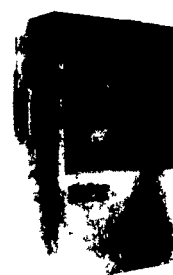
KEN CLUGSTON
(717) 665-6775

CRAFT-BILT CONSTRUCTION INC.

FARM-HOME BUILDING
1242 Breneman Road
MANHEIM, PA 17545
PH: (717) 665-4372

BUILDING & REMODELING FOR—
DAIRY RESIDENTIAL
SWINE POLE BUILDINGS
BEEF STORAGE

Get Fresh with Us!



Farm Air Conditioner



Package Fan

The Vent-O-Matic fully automatic ventilation system makes it easy to get fresh air into your building, providing constant air flow while maintaining correct temperature.

Over 38 years experience in the ventilation business has made us so sure of our system that we guarantee it with proper installation. And, to help you with your specific building requirements, we offer a free consulting/engineering service. Get fresh with us; we guarantee it!

- System includes Air Conditioner, Package Fan, Air Balancers and Automatic Intake Controller
- Energy efficient operation
- Optional corrosion-free stainless steel housing hardware
- Easy operation and maintenance

VENT-O-MATIC

Call for special pricing

TUSCARORA ELECTRIC MANUFACTURING CO., INC.
Tunkhannock, PA 18657 • 717 836-2101 • FAX 717 836 2102