

National Grain Market

St. Joseph, Mo.

Wednesday, May 18, 1994

DAILY NATIONAL GRAIN SUMMARY DRY WEATHER CONCERNS SEEM TO BE THE MAJOR FACTOR SUPPORTING GRAIN AND SOY-BEAN PRICES. WHEAT PRICES RECEIVED SOME PRESSURE, HOWEVER, FROM GOOD WINTER WHEAT CONDITIONS AND SLOW EXPORT DEMAND. WHEAT MIXED. CORN 1 TO 2 CENTS HIGHER. SORGHUM 4 TO 6 CENTS HIGHER. SOYBEANS 19 TO 21 CENTS HIGHER. WHEAT CROPS ARE REPORTED IN GOOD CONDITION IN MIDWEST AND SOUTHERN PLAINS STATES AND SPRING WHEAT SEEDING IS ABOUT 78 PERCENT COMPLETE. HARVEST PRESSURE LIMITED WHEAT PRICE ADVANCES. COMBINES READY TO MOVE INTO OKLAHOMA IN THE HARD RED WINTER WHEAT COUNTRY. THE MAIN SUPPORT TO WHEAT PRICES CAME FROM SPILLOVER STRENGTH IN CORN AND BEAN PITS AND FUND BUYING. GOOD DEMAND FOR MILLING QUALITY WHEAT PUSHED MINNEAPOLIS PRICES HIGHER. CORN PLANTING IS WELL ABOVE NORMAL IN MOST AREAS AND AROUND 80 PERCENT COMPLETE OVERALL. WON'T TAKE LONG TO FINISH THE SOYBEANS NOW, IOWA LEADING THE NATION WITH 60 PERCENT OF THEIR BEANS IN THE GROUND. MOISTURE IS VERY IMPORTANT TO ALREADY PLANTED CROPS BUT FARMERS WANT TO FINISH SEEDING AHEAD OF SCATTERED RAINS. HOWEVER, A DRY CROP OUTLOOK

IS FORECAST THIS YEAR (WHICH IS NORMAL FOR THIS TIME OF YEAR) AND TRADERS CONCERNS SPURRED AGGRESSIVE FUND BUYING.

EXPORT NEWS: JAPAN BOUGHT 57,141 TONNES DARK NORTHERN SPRING WHEAT AND 19,047 TONNES HARD RED WINTER WHEAT FOR JULY SHIPMENT. MEXICO BOUGHT 500 TONNES COTTONSEED OIL UNDER COAP FOR JUNE/JULY SHIPMENT.

DATE CHANGE YEAR AGO TRUCK BIDS: 05/18/94 05/17/94 05/19/93 WHEAT: KANSAS CITY 3.42-3.43 DN 2 3.46-3.48 MINNEAPOLIS 4.83 3/4 UP 1/2 3.76 3/4 PORTLAND 3.80-3.82 UP 2 3.57-3.60 ST. LOUIS NOT AVAILABLE 2.96-2.99.

CORN, U.S. NO. 2 YELLOW: KANSAS CITY 2.81-2.84 UP 22.23-2.25 MINNEAPOLIS 2.63 1/4 UP 1/4 2.19 1/4 SO. IOWA 2.67-2.70 NC-UP 1 2.24-2.27 OMAHA 2.66-2.68 UP 1 2.12-2.15.

SOYBEANS, NO. 1 YELLOW: KANSAS CITY 7.15-7.19 UP 21 5.93-5.95 MINNEAPOLIS 6.94 UP 19 1/2 5.86 1/4 SO. IOWA 7.04-7.09 UP 20 5.94-6.00 C. ILL. PROCESSORS 7.08-7.15 UP 19 1/2 6.00 1/2-6.10 1/2.

*TRUCK BIDS FOR KANSAS CITY, US NO. 1 HARD RED WINTER WHEAT, ORDINARY PROTEIN. MINNEAPOLIS, US NO. 1 DARK NORTHERN SPRING WHEAT, 14% PROTEIN. PORTLAND, NO. 1 SOFT WHITE WHEAT, ST. LOUIS, NO. 2 SOFT RED WINTER WHEAT.

FUTURES CLOSE: KANSAS CITY (JULY) WHEAT 3.27 1/4 DN 1 1/2 2.97 1/2 MINNEAPOLIS (JULY) WHEAT 3.48 3/4 UP 1/2 3.06 3/4 CHICAGO (JULY) WHEAT 3.24 DN 2 2.97 (JULY) CORN 2.69 1/4 UP 2 1/4 2.26 1/4 (JULY) SOYBEANS 7.02 UP 21 1/2 6.00 1/2.

EXPORT: BARGE OR RAIL, PORT OF NEW ORLEANS OR NORTH TEXAS GULF. NO. 1 HARD RED WINTER WHEAT ORDINARY PROTEIN 3.79 1/4 UP 2 1/2 3.82 1/2 NO. 2 SOFT RED WINTER WHEAT 3.38-3.42 DN 2-NC 3.81-3.97 NO. 2 YELLOW CORN 2.84-2.85 UP 1-1 1/2 2.47-2.48 1/4 NO. 2 YELLOW SORGHUM RAIL 5.02 UP 4 BARGE 5.00 UP 5 4.18-4.24 NO. 2 YELLOW SOYBEANS 7.27-7.29 UP 20 1/2-21 1/2 6.23-6.24 1/2 BIRD.

THIS REPORT A SERVICE OF U.S. DEPARTMENT OF AGRICULTURE, LIVESTOCK AND GRAIN MARKET NEWS, ST. JOSEPH, MISSOURI.

North Jersey Market

Hackettstown, N.J.

Report Supplied by Auction Tuesday, May 17, 1994

Hay—Straw & Grain Report

ALFALFA HAY: 2 LOTS, 3.20 AND 3.60 BALE.

MIXED HAY: 10 LOTS, 3.00-4.10 BALE.

GRASS HAY: 3 LOTS, 2.50-3.20 BALE.

TIMOTHY HAY: 3 LOTS AT 3.50 BALE.

WHEAT STRAW: 1 LOT AT 3.40 BALE.

OAT STRAW: 1 LOT AT 1.80 BALE.

OATS: 2 LOTS AT 6.00 AND 7.75 BAG.

SHELLED CORN: 6.00 BAG.

CORN STALKS: 1 LOT AT 7.00 BALE.

TREE SEEDLINGS: 1 LOT AT 5.00 AND 11.00 BUNDLE.

CEDAR POSTS: 1 LOT AT 1.30 EACH.

TOTAL: 26 LOTS.

Lancaster Farming, Saturday, May 21, 1994-A7

Leesport Livestock Auction

Leesport, Pa.

Wednesday, May 18, 1994

Report Supplied by PDA

CATTLE 302.. PDA .. Supply included 96 sl. steers & heifers, 78 feeder cattle . sl. steers mostly 1.00 to 1.50 lower, sl. cows 1.50 to 2.50 higher. STEERS: Low to average Choice 1000/1300 lbs. 64.50-69.25, few Yield Grade 4-5, 1500/1700 lbs. 53.00-60.00, Select 58.00-66.00. HOLSTEINS: Choice 60.00-62.75, Select 56.50-58.75, few 58.00, few Standard 51.00-55.00. HEIFERS: few Choice 62.00-65.75, few Select 55.50-62.00, few Select Holstein 52.00-57.00. COWS: Breaking Utility and Commercial 47.75-51.75, couple 55.25, Cutter and Bon. Utility 47.50-52.00, few 52.75, Canner and Low Cutter 43.00-47.25. Shells down to 37.00. BULLOCKS: few Select and Choice 57.00-64.50. BULLS: Yield Grade No. 1 1050/1550 lbs. 55.50-64.00. FEEDER CATTLE: Steers: Large Frame No. 2 600/900 lbs. 55.50-66.00, few Medium Frame No. 1 400/850 lbs. 67.00-80.00; Heifers: Medium Frame No. 1 375/825 lbs. 56.50-77.50.

CALVES 125..VEALERS: one Choice 105.00, few Standard and Good 70/100 lbs. 70.00-75.00, Utility 60/80 lbs. 45.00-60.00. RETURNED TO FARM: No. 1 Holstein bulls 90/135 lbs. 135.00-168.00, No. 2 80/125 lbs. 85.00-135.00; No. 1 Holstein heifers 85/125 lbs. 140.00-180.00. Few Beef cross bulls and heifers 70/100 lbs. 70.00-115.00. HOGS 200..Barrows and gilts .25 to 1.00 lower. BARROWS AND GILTS: US

1-2 225/260 lbs. 42.10-43.75, US 1-3 225/260 lbs. 40.85- 43.00, US 2-3 270/280 lbs. 37.85-40.10. SOWS: US 1-3 325/480 lbs. 30.50-37.00. BOARS: few 27.00-30.50.

FEEDER PIGS 86...Few lots US 1-3 21/23 lbs. 190.00-200.00. -- per cwt. US 1-3 35/60 lbs. 84.00-96.00, one lot 18 lbs. 35.00. -- per head.

SHEEP 30..Spring sl. lambs: Choice 40/120 lbs. 75.00-95.00. Slaughter sheep: few yearlings 45.00-46.00.

GOATS 15...Few Large 47.50-57.50, Medium 27.50-42.50.-- per head.

North Jersey Livestock

Hackettstown, NJ

Report Supplied by Auction

Tuesday, May 17, 1994

Report supplied by auction

CALVES 37-2.00.
COWS .20-53% .
EASY COWS .05-.43% .
HEIFERS .35-.68.
BULLS .52-.68.
STEERS .40-.70.
HOGS .26-.43.
SOWS .18-.29% .
ROASTING PIGS EACH 38.00-43.00.
BOARS .22-.45.
SHEEP .12-.77.
LAMBS EACH 4.00-84.00.
LAMBS PER LB. .40-1.08.
GOATS EACH 31.00-190.00.
KIDS EACH 2.00-125.00.
TOTAL 1424.

See Your AGCO White-New Idea Dealer Listed Below.

New Jersey

Bridgeton

Leslie G. Fogg

Columbus

Reed Brothers Equipment

Shiloh

Farm Rite

Pennsylvania

Airville

Farmers Equip & Supply

Bechtelsville

Miller Equipment

Belleville

Ivan J. Zook & Sons

Bethel

Zimmerman Farm Service

Bloomsburg

William F. Welliver

Chambersburg

Chambersburg Farm Service

Cochranville

Stoltzfus Farm Service

Dover

George N. Gross

Everett

Sollenbergers Equipment

Gettysburg

Yingling's Implement

Honesdale

Marshall Machinery

Klingerstown

Stanleys Farm Service

Lebanon

Umbergers of Fontana

Mahaffey

Hutton Farm Equipment

Mercer

Ralph W. Kyle

Oakland Mills

Peoples Sales & Service

Quakertown

C. J. Wonsidler Brothers

Quarryville

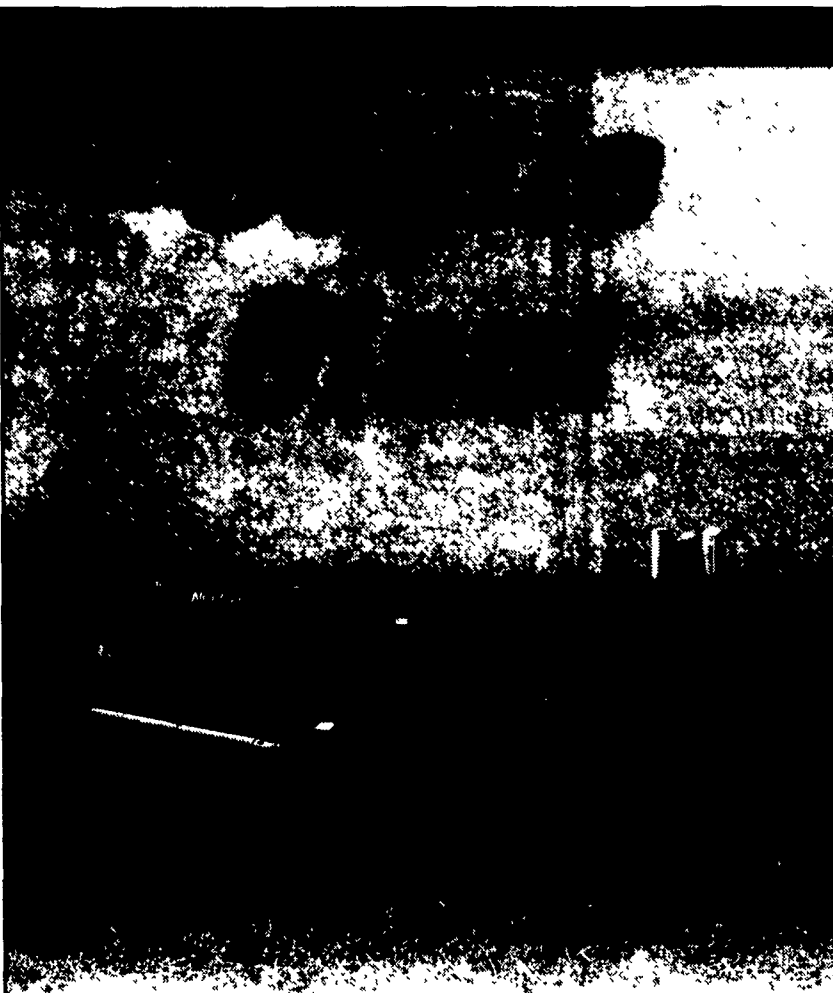
A L Herr & Brother

Somerset

Lincoln Supply & Equipment

Tunkhannock

Acc Jurista



Slices through lush stands while gently crimping stems.

New Idea 5200 Series Disc Mower Conditioners swiftly slice through the toughest conditions while gently crimping stems.

And reducing mowing time while reducing leaf loss is critical in maximizing the relative feed value (RFV) of your crop.

Best of all, the low maintenance, shaft-driven self-contained disc modules get you through spots that stop others in their tracks.

Select the best width for your operation: 9'3" or 11'9". Then see one at your White-New Idea dealer or call 1 800 767-3221.



NEW IDEA
BY AGCO WHITE-NEW IDEA

WE PAY CASH

for seller financed

Real Estate Notes and Mortgages.

Are you receiving payments?

Would you like cash now? Why wait?

Explore your options with

Robert Tobey

CASH

1-800-670-2274

FUNDING

Moriah Farm, Kleinfeltersville, PA 17039-0198

WHAT'S AHEAD FOR CORN & SOYBEAN

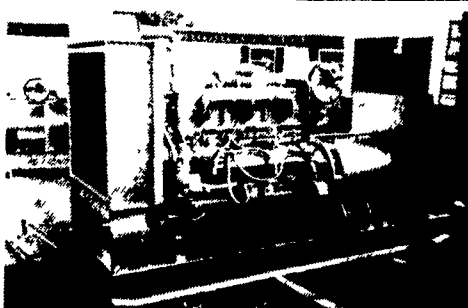
- We Deal In Futures And Options
- Our Only Business Is Commodity Futures And Options
- Same Location And Principals For Over 20 Years
- When Buying options, your risk is limited to the loss of the premium paid plus all transaction cost. Buying futures and options have inherent risk and should be done only with risk capital.

FOR INFORMATION...LITERATURE... CHARTS... PLEASE CALL
215-821-8111 800-543-8939

LEHIGH VALLEY FUTURES INC.

Suite LL6, 2200 Hamilton St., Allentown, PA 18104

The risk of loss in trading futures and options on futures can be substantial. Futures and options trading may not be suitable for everyone. You should carefully consider the risks in light of your financial condition in deciding whether to trade.



GENERATORS

Sales ★ Service ★ Rentals
* Complete Generator Systems
* PTO * Portables * 2-1600 KW
"We Service It If You Have It And Sell It If You Need It"

34 W. Mohler Church Rd.
Ephrata, PA 17522

Tel: 717-738-0300

Fax: 717-738-4329