

**MAILBOX MARKET  
FOR SALE**

5 yr. old gelding, broke to ride, 15.1 hands, very nice, Morgan type horse. Lanc. Co. Benjamin F. Lapp, 77 Schoolhouse Rd., Kirkwood, Pa. 17536.

Beautiful reg. Jacob lambs & adult ewes, rams, great spinning fleeces, jacob-cross avail., \$50-\$250. Leb. Co. 717-866-4678

F Super A w/cults. \$2500, JD-M w/cults. \$1750, Farmall SAV w/cults. \$2500, York rake \$500, Cub Low-boy \$1700. Bucks Co 215-598-7546.

Planer 8"x24 no toy \$1200, David Bradley walk behind (2) plow cult. needs work \$150. Atlantic Co. 609-561-7623.

5,000 lb. forklift \$4,500 OBO, Globe S/S hand slicer \$500, 500 lb. elect. hoist \$200, dial platform scales \$175, pallet jacks \$150 ea. Bucks Co 215-257-7678.

14.1 hand grey pony, safe & sound \$650. Chester Co. 610-869-2791.

Ostrich/Emu chick shelter, 8'x16', easily moved, never used, variable speed automatic fan, DRI-DEK flooring. Chester Co. 215-857-2497.

Int. 240 utility tractor, AC WC tractor, Ford 3 cyl. 201 cu. in. diesel engine. Del. Co. 610-459-2644 after 6 p.m.

Dynahoe loader-backhoe diesel power-runs well-needs brakes \$4,800, Ford 201 cu. in. diesel engine make offer. Del. Co. 610-459-2644.

Clutch discs size 15" & smaller, clutch disc linings different sizes, hyd. cyls. for IH cult Hunterdon Co. 908-782-2878.

Milnor 301B-washer, tables, sarah dryers, gas-boilers, maytag stack dryers, water holding tanks, dry cleaning machine (all used). Franklin Co. 717-264-8582.

Emus 3 mth. chicks \$3000 from early breeders 3 yr. old hen \$7000. Thomas Keppler, Suffolk Co. N.Y. 516-361-4957.

18.4x28 Goodyear rear tractor tires, 1/4 tread, \$200 pair w/tubes. Adams Co. 717-337-2458 after 6 p.m.

IH harrow 16' wide shed kept last 5 yrs. seat for Farmall M seat for Super C both good 16.9x26 tire. 610-562-7742.

15 ton ear corn slight damage make offer. Amzie Zimmerman. Lanc. Co. 717-445-5704 after 6 p.m.

Red oak, cedar, pine, JD fluffer, 1st cutting alfalfa mix hay, locust posts sawed & round. Berks Co. 610-488-1402, eves.

NH 80 bu., #350 grinder mixer, good shape 610-682-2255

Air compressor Joy 265 60 HP 3 PH 220-460 volt \$5000, consider trade milling machine 3 ph. 208 volt. Harford Co. Duke. 410-676-3666.

1978 F150 Ford pickup 4x4 auto., good cond., \$2000, reg. tunis ram. Lanc. Co. 717-426-3871.

Lowrey Festival elect. organ w/Magic Genie chords, earphones, bench \$200. Adams Co. 717-642-9199.

Int. 3 btm. trip plow, crop sprayer, Ford pull type cult., GMC 1982 conversion van, 8' harrow. Franklin Co. 717-369-4983.

Good heavy clean oats at the farm, also very old hay tedder. Dau. Co. 717-362-9218.

IH 300 NF 2 pt. TA, out 3x14 plows \$1400, hervey hay, grain elevator \$200, NI conditioner 7' \$750. Perry Co. 717-834-4017.

AC 7010 tractor 106 HP power shift trans., 950 hrs. cab w/radio & heater, like new cond., \$18,500. Dau. Co. 717-896-3724.

Dry broiler manure \$7 a ton. Franklin Co. 717-532-9234.

AKC min. Schnauzer & Boston terrier puppies, shots, wormed, health certificate. North'd. Co. 717-286-1024.

Elect. powered mobile lift reaches up to 50', 4' platform w/tool outlet sockets \$2000 OBO. Burl. Co. 609-893-6879.

Hay wagon 8x22 removable pipe sides for hauling round bales 12 ton tandem gear, good cond. Cumb. Co. 717-532-6367.

NH hay head, open end, good cond., \$800. Cumber. Co. 717-532-5382.

Trailer like new 6000 cap. w/RM sides elec. brakes \$750, side delivery rake on steel \$100, harrow 3 sec., \$50. Berks Co. 610-582-3068.

1983 LTD SW PS PB AT A/C V-6 looks, runs good, \$1200, 15' camper sleeps 6 \$650. Lanc. Co. 717-367-1880.

Feeder pig loading chute 10' wide, 16' long adjustable height, want narrow row snapper head for Fox 2310 harvester. Leb. Co. 717-949-2108.

AC D19 excel. cond., Ford post hole digger 3 pt. H, 3 augers Ford 3 pt. H spring tooth harrow, 11 pts. Schuyl. Co. 717-345-2985 eves after 7 p.m.

JD 640 rake rubber teeth \$1095, JD 494A corn planter \$300, Century trailer sprayer \$295, bale thrower wagon \$325. Lanc. Co. 717-653-5926.

Case cac rear weights \$25, Case rake on rubber field ready \$150. York Co. 717-235-2032.

JD B cyclone 6 spd. trans-mission need work, LeRoy 4 cyl. gas power unit w/flat pulley. Col. Co. 717-356-2511.

Radial drill press 32" V-mill 5'x16" table w/tracer surface grinder 18"x6" m. offer, JD 3020 diesel NF. Blair Co. 814-944-0818.

Lumber new rough sawed seasoned oak hem, 8x10x10', 8x10x16', 8x8x16', 6x8x14', 8x8x20', 6x8x20', 2x8x20'. 201-383-5276 in N.J.

Alfalfa orchard grass hay some timothy small bales \$80 per ton at barn. Schuyl. Co. 717-644-2443 after 9 p.m.

Ford tractor 9N 3 pt. hitch & power angle snow plow must sell \$1800 or best offer 215-588-8599.

JD 60 NF, 530 NF, 630 NF. Somerset Co. N.J. 908-359-5206.

Chipper 3 pt. hd. drum type like new used on farm needs 35 HP tractor \$4,000. Sussex Co. N.J. 201-875-1597, 5-9 p.m.

1020 JD steel wheels 3 pt. 4 outlets runs good, \$4000. Bedford Co. Trucking avail. 814-793-4640.

Pony stallion sorrel w/light mane & tail 4 yrs. old drives \$450. Franklin Co. 717-352-2071 eves.

5th wheel camper 24' nice, 84 LTD gray paint good cond., air radio tilt seats, no rust. 717-539-2283.

JD transport 8' disk, Int. 4 row corn planter, Int. 5 btm. moldboard plow. Col. Co. 717-784-9634.

1949 JD A fair cond., \$1700, cult. for JD 40 w/ toolbar \$250, cult. for 520 \$100. Lanc. Co. 717-653-4725.

Hotpoint apartment size washer, as is, moving. \$75 or best offer. 717-274-2512.

9' side delivery rake ground driven working cond., price \$750. 215-488-7520 after 5 p.m. week days.

2 row tobacco planter, rough cond., but works, has nice 150 gal. raven tank w/ mounting frame, best reasonable offer. Leb. Co. 610-589-2169.

6 Angus heifers about 500 lbs. angus cross breed bull about 700 lbs. Berks Co. 610-286-5422.

**DON'T  
BE  
SLOW**



**Call Now To Place Your  
CLASSIFIED AD**

Ph: 717-394-3047 or 717-626-1164

**FISHER'S PAINTING &**

**FISHER'S PAINT OUTLET STORE**

QUALITY PAINTS @ REASONABLE PRICES

■ ALL TYPES OF INTERIOR & EXTERIOR PAINTING

■ SANDBLASTING ■ ROOF COATING

■ RESTORATION & WATERPROOFING ON STONE & BRICK BUILDINGS

HOUSES - BARNs - FENCES - FACTORIES - ETC.

Specialists In Sand Blasting/Spray Painting Farm Buildings, Feed Mills, Roofs, Tanks, Etc. With Aerial Equipment

**WE NOW REPAIR SPRAY GUNS AND PUMPS**

4056A Newport Rd., Kinzers, PA 17535 717-768-3239  
On Rt. 772 Across From Pequea Valley School

Brush, Roll Or Spray - We'll Do It Either Way  
For Jobs Large Or Small - Our Men Will Do It All



**MAHONING  
OUTDOOR  
FURNACES**

*"The Natural Way To  
Heat Your Home"*

Burns Coal, Wood, Oil or Natural Gas  
FUEL USED IN STANDARD UNIT: WOOD & COAL & WOOD BY-PRODUCTS (SAWDUST, PAPER, ETC.) FUEL USED IN MULTI-FUEL MODEL: SAME AS ABOVE INCLUDING OIL, PROPANE, NATURAL GAS

Efficiency Rating 83% to 85% - Cut Emissions by 90%  
3-Year Warranty Except Electrical Components (1 Year)  
35 Years Heating Experience

PROUDLY BUILT IN INDIANA COUNTY, PENNSYLVANIA  
100,000 - 500,000 BTU 36"-60" Fire Boxes

★ The only outdoor furnace made with a Catalytic Combuster. ★  
Mahoning Catalytic Combuster Will Help In The Following Ways:

1. Burn one cord of wood which equals 166 gallons of oil.
2. Your fuel source becomes enormous inexhaustible and poses few risks to public safety.
3. Overall efficiency of 85% which means the heat no longer goes up the chimney!
4. You get more heat from a log compared to the non-cat furnace.
5. More burn time - less reloading time!
6. Zap 90% of pollutants, made from fire source.
7. Saves you a lot of money!
8. User friendly, emits no smoke!

**SCHOENLY'S NURSERY**

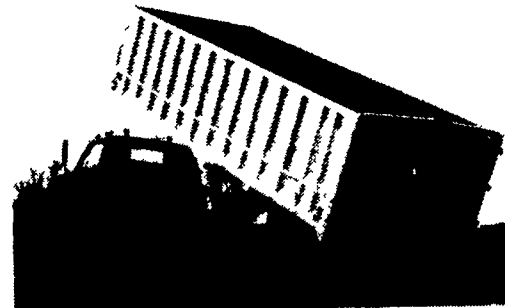
5510 Boyertown Pike, Birdsboro, PA 19508  
(610) 689-5230

Cut Your Heating Cost With Our Outdoor Furnace

**ALUMINUM GRAIN BODIES  
& ALUMINUM REPAIRS by**



Rugged  
Strength



Dependable  
Performance

These ultra-light bodies are designed for strength through engineering, not strength with bulk. For example, a 16' grain body with tailgate and 48" sides weighs only 1490 lbs. complete. We'll build you any length or any side height up to 60".

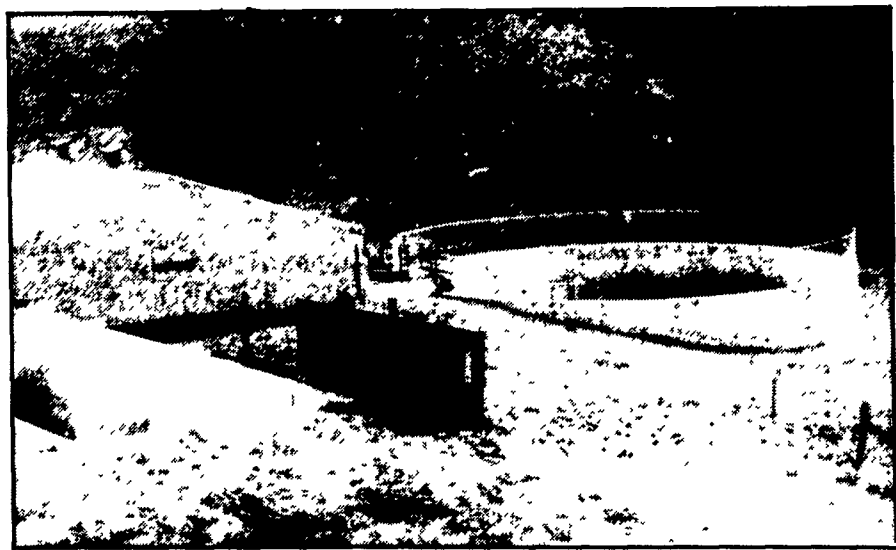
Also available:

- Double swinging hay hauling tailgate
- Barn door type tailgate
- Slide out cattle chutes
- Diamond flooring
- Pull out panel tailgates
- Any size grain chute

**HEWEY WELDING**

Box 2312, RD4 Lebanon, PA 17042 (717) 867-5222

**• Agricultural • Commercial • Residential**



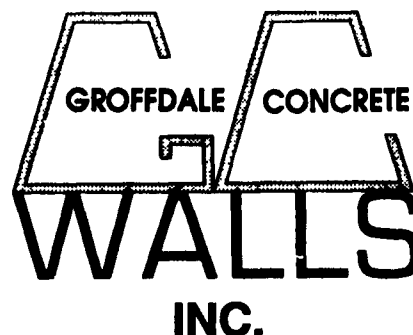
Partial In-Ground Tank Featuring Commercial Chain Link Fence (5' High - SCS Approved)

- Retaining Walls • Bunker Silos
- Manure Storage, Etc.

LET OUR EXPERIENCE WORK FOR YOU-ESTABLISHED SINCE 1979!  
WE ORIGINATED THE CONCRETE SYSTEM!

Sizes And  
Layouts  
To Your  
Specifications

We Work  
Hard For  
Customer  
Satisfaction!



430 Concrete Ave., Leola, PA  
717-656-2016

Authorized  
Dealer For  
KEYSTONE  
CONCRETE  
PRODUCTS

- H-Bunks
- J-Bunks
- Trench Silo Walls
- Hog & Cattle Slats