

Pa. Holstein Association To Host Convention

STATE COLLEGE (Centre Co.) — The Pennsylvania Holstein Association is to serve as host for the 1995 National Holstein Convention, scheduled to be held in Pittsburgh, June 25 - 28.

There are to be visitors from all over the United States, and also guests from many foreign countries, attending the convention.

The association is currently working on creating a convention

book and is seeking advertisers.

According to a news release, "An excellent promotional opportunity will be available to Holstein breeders and related industry through placing an advertisement in a promotional book highlighting Holstein breeders and the dairy industry of Pennsylvania."

There is even a special deal involving additional publication of a farm or business in a convention

locator map of Pennsylvania that is related to the size of the advertisement order for the convention promotional book.

According to the news release, those wishing more information should contact a member of the 1995 National Convention Publication Committee.

Members of the committee include Joyce Bupp, at (717) 428-1865; Renee Bates, (412)

376-2430; Lolly Leshner, (610) 488-9160; Rhelda Royer, (717) 569-2304; Patricia Carr, (814) 445-8237; Kathy Walton, (717) 243-8750; Cindy Weimer, (814) 498-2047; Judy Black (918) 684-3907; John and Leslie Rhoades (717) 836-5495; Jake and Sally Tanis, (814) 364-2113; Carolyn Moyer, (717) 324-2482; John

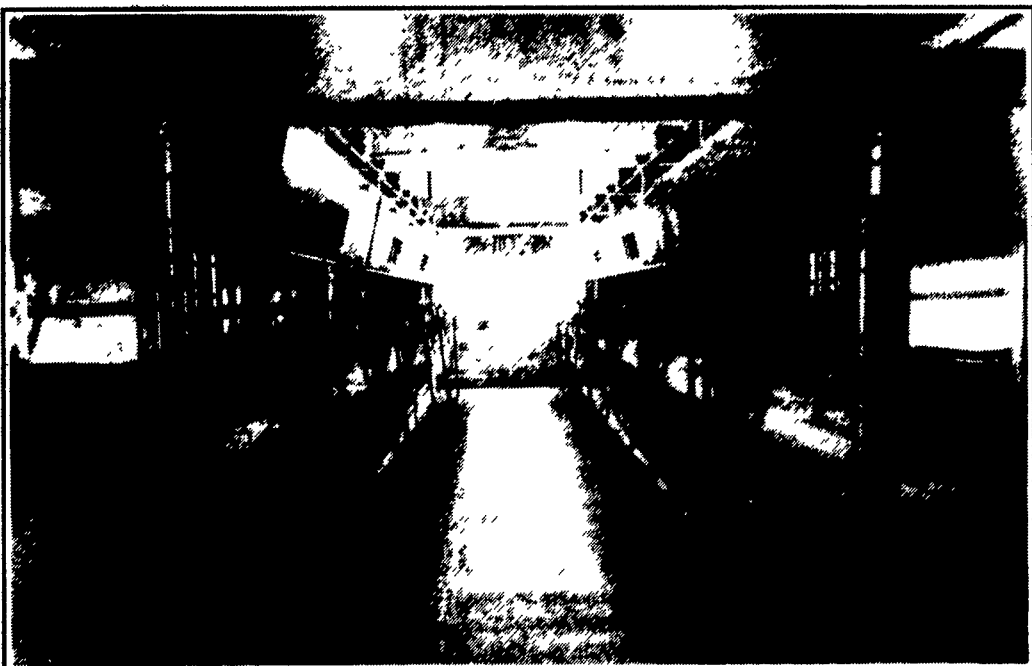
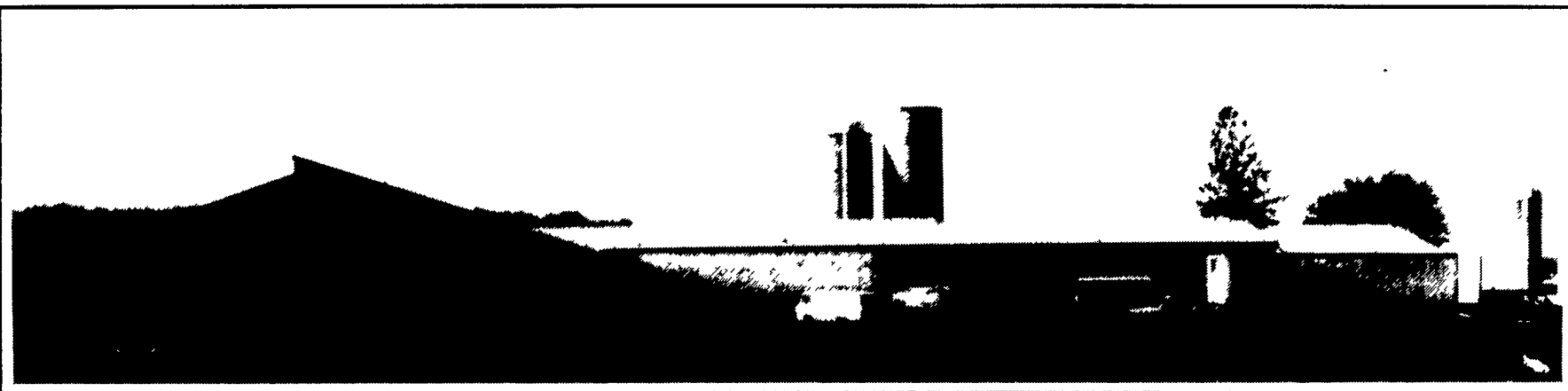
and Judy Grice, (412) 225-7806; Martha Gehringer, (215) 845-2538; Vincent Wagner, (717) 949-2046; Nina Burdette, (717) 328-3222; or Jane Benner, (717) 589-3838.

For additional information, call the Pa. Holstein Association at (814) 234-0364.



LAR-PAT FARM (Larry & Pat Hage) Greencastle, PA

Tuesday, May 24, 9:30 - 3:00



44x200 3-Row Slatted Free Stall Barn & Milking Center

Westfalia Double 5 Auto Tandem with Pre & Post Dip

DIRECTIONS: Route 81 S. To Chambersburg Exit 4. Marion West To Rt. 11 South. Turn Right At Crossroad. Dairy - Kauffman Rd. Farm Located 1/2 Mile On Left.

**CONGRATULATIONS TO
Larry & Patty Hage
And Hopes For
Continued Success!**

KING CONSTRUCTION CO.
601 Overly Grove Rd., New Holland, PA 17557
717-354-4740
Custom Design And Construction Of:
Dairy Barns, Heifer Facilities, Horse
Barns, Equipment Sheds, And More!
Phil Van Lieu Home: 717-259-9077

Walton's Dairy Service
860 Mount Pleasant Rd.,
Fayetteville, PA 17222
WESTFALIA 717-352-7606

KEYSTONE CONCRETE PRODUCTS INC.
477 East Farmersville Rd.
New Holland, PA 17557
(717) 355-2341

Chambersburg Farm Service, Inc.
975 South Main St., Chambersburg, PA 17201
(717) 264-3533
800-447-8830
FAX 717-264-0728

Sollenberger Silos Corp.
Poured Concrete Silos Since 1908
P.O. Box N, Chambersburg, PA 17201
(717) 264-9588

Valleybank
DIVISION OF DAUPHIN DEPOSIT BANK
Member FDIC
P.O. Box 459 • Chambersburg, PA 17201-0459
717/263-2655 • 717-261-2835 • FAX 717-261-2850
DOUGLAS W. WEAVER - Agri Loan Officer

KIPE STEEL, INC.
3791 Church Rd., Chambersburg, PA 17201
Toll-Free 1-800-4DAIRYS (1-800-432-4797)
Phone: (717) 264-1185
FAX: (717) 267-1580

CORDELL H R & SONS PLUMBING & HEATING
RESIDENTIAL - COMMERCIAL
■ Home Repairs ■ Furnace Replacement & Repair
■ Remodeling ■ Bathroom Remodeling
232 N. Main St., Mercersburg, PA
(717) 328-3513

NORTHEAST AGRI SYSTEMS, INC.
Flyway Business Park
139A West Airport Road
Littitz, PA 17543
Ph: (717) 569-2702
1-800-673-2580

adc
Atlantic Dairy Cooperative
1225 Industrial Highway
Southampton, PA 18966
1-800-645-MILK

Zimmerman
EPOXY COATED STEEL BARN EQUIPMENT
Manufacturers and Distributors
295 Woodcorner Road, Littitz, PA 17543
Phone: (717) 738-1121 or Fax: (717) 738-4300

**ELECTRICIAN
MERLE W. RIFE**
1167 Boyermill Road, Chamberburg, PA
717-264-6902

D.A. Helman Excavating
5933 Stamey Hill Road
Waynesboro, PA
(717) 749-3661

PRECISE Concrete Walls Inc.
601 Overly Grove Rd
New Holland, PA 17557
717-355-0726
• Buildings • Retaining Walls • All Types of Flat Work
• Basements • SCS Approved Storage Pits
• Footers • Floors

Priest's Refrigeration
HAGERSTOWN, MD
301-416-7340