

# PROTECT YOUR INVESTMENT!



Complete Product Line  
 • DL Oil Treatment Concentrate  
 • G-710 Grease  
 • XL 230 Penetrating Oil Spray  
 • OGC 500 Open Gear & Chain Lube  
 • A-80 Cutting & Tapping Formula  
 • Diesel Fuel Conditioner Concentrate  
 • Super Gas Conditioner Concentrate

### Use IXL In:

- Gas & Diesel Engines
- Motors
- Gear Boxes
- Transfer Cases
- Steering Units
- Universal & CV Joints
- Hydraulic Systems
- Electric Motor Bearings
- Pillow-Block Bearings
- Conveyor Systems
- AC & Refrigeration System
- Transmissions
- Differentials
- Wheel Bearings
- Compressors



## IXL Technology Is New, Different & Better

Modern lubricants are about as good as they are going to get. So IXL solves the problem of friction and wear by treating the metal itself.

Treated metal parts are smoother, tougher, heat and wear resistant. More importantly, the friction characteristic of the metal itself has been reduced by more than 70%! This allows lubricants to do their jobs better and last longer. Which means your equipment runs better and lasts longer—much longer; as much as two or three times the manufacturer's expected "normal" life!

### HOW DOES IXL ANTI-FRICTION METAL TREATMENT ACTUALLY WORK?

Simply stated, IXL is a pressure treatment for steel. Picture iron or steel as a sponge soaking up IXL when heat and pressure are applied for a period of time. IXL is actually attracted to the heat and pressure found in your engine, transmission, differential, wheel bearings and other working parts of your vehicle. The more heat and pressure developed by these parts, the faster and deeper the treatment soaks into them.

Used as directed, the IXL treatment is longlasting and there's no resin coating or bonded film which can peel or rub off; just bare metal with IXL soaked into it. There's no buildup on the metal surfaces and no change of tolerances. The treatment even

remains effective if the metal is heated red hot—way beyond the point where your lubricants have failed.

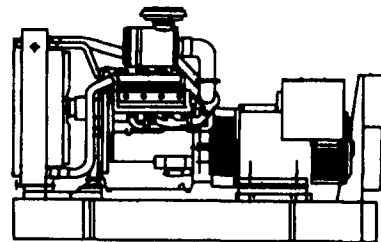
Friction created by the working parts of your vehicle is always wearing away at the metal surfaces. After treatment with IXL the friction of these surfaces is reduced by 70% or more providing "bare metal" protection and allowing your lubricants to do their jobs much more efficiently. Since friction and wear are a continuous process, we recommend (based on actual use) that you always use a little more IXL when adding or changing oil. As a result, friction and wear are always kept at a minimum. And the metal parts continue to be treated while they do their work.

Dealer Inquiries Invited

**Excel Products Company**  
 227 Wood Corner Road • Lititz, PA 17543  
 Phone: 717/733-6698 • Fax 717/733-0031  
 800/IXL-LUBE

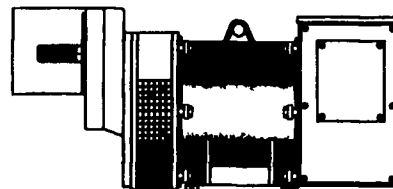
# GENERATOR SYSTEMS

1-800-779-8809



New & Used 5 to 2500 KW  
 Diesel • Propane • Natural Gas

24 Hour Emergency Service  
 Sales - Installation  
 Maintenance Contracts • Rentals



10 To 150 KW 1800 RPM Brushless  
 Tractor Driven Generators



**DYNA-TECH INDUSTRIES**  
 602 E. Evergreen Rd., Lebanon, PA 17042  
 717-274-8899 Fax 274-5334  
 Ask About Our Lightning & Surge Protection Units  
 Panel Mount • Plug-in • Electric Fence Protection



# Roundup of Savings



We're passing special savings from John Deere on to you



### NEW! 20 FT. CUT 2018 FLEX WING ROTARY CUTTER



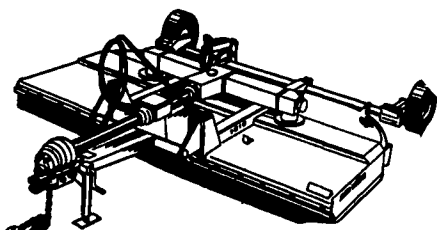
With The Features You Want In A Big Cutter

- Fast Blade Tip Speed
- Flexible Design
- Self Adjusting Slip Clutch
- Constant Velocity Driveline
- Load Balanced Leveling
- Unibody Construction

Sale Price **\$13,390<sup>00</sup>**

Sale Ends June 18

### 10 FT. CUT WIDE-CUT QUALITY RUNS IN THE FAMILY

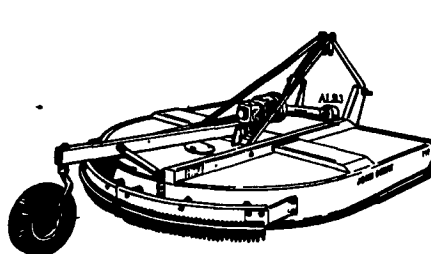


- Choose the 10-foot 1018.
- Continuous-seam welding and heavy-gauge decks mean durability, performance.
- High blade-tip speeds for cleaner, more uniform cut.

Sale Price **\$539<sup>00</sup>**

Sale Ends June 18

### 7 FT. CUT CUTTER FAMILY: SHARP PERFORMER



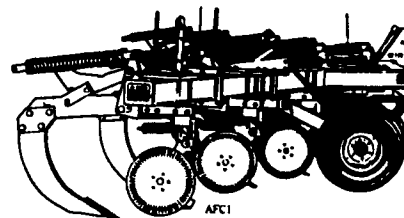
- For tough action, check the 717
- Deep 9 1/2" body allows handling a high volume of material

Sale Price **\$2,350<sup>00</sup>**

Sale Ends June 18

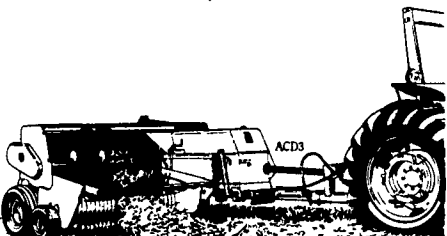
### GO 2-FEET DEEP...NON-STOP WITH RESET STANDARDS

- Break up compacted soil with the 915 V-Ripper
- Spring-reset standards go no-stop in rocks



Available This Season:  
 MODEL 915, 5 Shank

### JOHN DEERE BALERS DELIVER CONSISTENCY, CONSISTENTLY



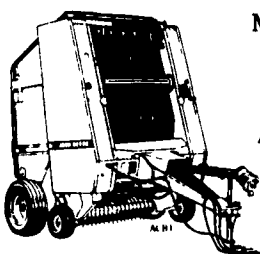
Building "square-or," stackable, solid bales is what our proven hay control system is all about. Once hay is inside the baler, a continuous-flow, floating auger moves the crop into a tapered chamber precompressing the hay before it reaches the bale chamber. This makes John Deere bales denser, and more consistent. A difference you'll notice when stacking and feeding bale after John Deere bale

Model 338 Mid Size Baler  
 With 1/4 Turn Chute

Sale Price **\$10,850<sup>00</sup>** (1 Only)

Sale Ends June 18

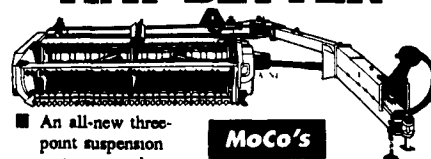
### JOHN DEERE...THE FASTEST MOVING BALERS AROUND



Model 435 Round Baler In Stock  
 6% Variable Rate Financing Available Up To 24 Months  
 Call For Price Today

- Surface wrap when used with our bale push bar, lets you finish a bale, wrap it, and start on the next in just 14 seconds.
- 435 Balers give you the choice: surface wrap or twine-tie bales up to 72-inch diameter (1,500 pounds)... faster baling, protected bales.
- Self-cleaning diamond tread nylon/poly belts.

### NOBODY DOES HAY BETTER



- An all-new three-point suspension system provides unmatched flotation
- Redesigned guards and a 5-bar reel help the all-new sicklebar machine cut better — and six inches wider — than anything in it's class

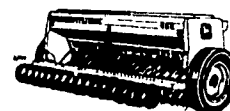
Model 820 9 Ft. 9 In. Cut  
**Extra 4% Off Now Through June 30**



110 South Railroad Ave.  
 New Holland, PA 17557  
 (717) 354-4191

### 450 END WHEEL DRILLS: GOOD MADE BETTER

- 35 Percent greater penetrating force than John Deere 8000 Series Drills
- Depth gauging Press Wheels accurately gauge furrow depth while providing good seed to soil contact



**IN STOCK**

• 450 8 ft. w/Grass Seed Att.  
**\$4,750<sup>00</sup>**

Monday Thru Friday  
 7:30-5:00  
 Saturday  
 7-Noon

