



PERFORMERS

### Field Tested Machines

Ford 1210 4WD.....	\$7,900
Ford 4000.....	\$6,500
Ford 861.....	\$5,900
Ford 14D w/Power Steering and 48" Deck, New.....	\$6,800
Ford LT II w/Mower Deck and Front Blade.....	\$1,250
New Holland 455D Skid Steer Loader.....	\$9,900
New Holland 853 Round Baler w/Hyd. Wrap.....	\$8,900
New Holland 850 Round Baler w/Electric Wrap.....	\$4,900
New Holland 846 Round Baler w/Manual Wrap.....	\$4,900
New Holland 316 Baler w/1/4 Turn Chute.....	\$6,900
New Holland 320 Baler w/Bale Thrower (Choice of 2).....	\$6,500
New Holland 1496 S.P. Haybine New Rolls Low Hrs.....	\$26,500
New Holland 1495 S.P. Haybine, Diesel, Air, Hydro.....	\$13,500
New Holland 1499 S.P. Haybine, 495 Hrs., Like New.....	\$33,000
New Holland 488 Haybine.....	\$7,500
New Holland 489 Haybine.....	3 To Choose From
New Holland 469 Haybine.....	3 To Choose From
Kuhn FC250 Disc Mower Conditioner.....	\$4,900
New Holland 411 Discbine.....	\$7,900
New Holland 1880 S.P. Forage Harvester.....	\$15,000
New Holland 1880S 12 Ft. Sickle Bar Header.....	\$4,500
New Holland 1034 Automatic Bale Wagon.....	\$9,500
New Holland 791 Spreader.....	\$3,900
New Holland 308 Side Delivery Manure Spreader.....	\$5,900
Gehl 175 Manure Spreader w/Hyd. Endgate.....	\$2,900
JD 27 Frail Stalk Shredder.....	\$3,300

We Ship Parts Everyday - UPS - Fed. Express

### CERESVILLE FORD NEW HOLLAND, INC.

8102 Liberty Road, P.O. Box A  
Frederick, Maryland 21701

(301) 662-4197 • 1-800-331-9122



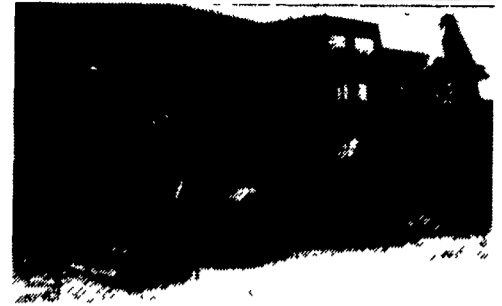
## J & F EQUIPMENT

(717) 859-3283

No Reasonable Offer Refused  
Custom Repairs On All Makes Industrial & Farm Equipment



Case 1835 B Diesel  
\$7,200



Case 780, Good Condition  
\$7,700

WE ARE BUYERS FOR CONSTRUCTION EQUIPMENT NEEDING REPAIRS

(2) Case 1835B Skid Loader.....	\$7,200/ea.
Case 850B Crawler Loader, good cond.....	\$13,500
JD 350 or 450 ripper, good condition.....	\$1,000
JD 350 Crawler Loader, choice of 2.....	\$8,000/ea.
JD 350C Crawler Loader, good condition.....	\$13,000
'84 JD 455D Crawler Loader w/New Tracks, New Paint.....	\$19,000
'84 JD 455D, New Tracks.....	\$18,500
Komatsu D65S Crawler Loader.....	\$10,500
Dresser TD7E 6-Way.....	\$13,500



1973 JD 544A \$14,000



JD 350, Good Condition  
\$8,000

## CLAAS® Rollant round balers give you what you want



—one quality round  
bale after another—

Discover Quality...Discover Value...

The **Rollant 66** makes fast work of 4'x5' bales. Its unique two-stage pick-up and close tines produce a clean, efficient harvest in less time. Rollatex netting wraps a bale in 10 seconds or less, and double-twine wraps it up in just 20

The **Rollant 46** introduced CLAAS's innovative fixed bale chamber to the marketplace. This versatile baler handles all farm operations from dry hay to silage. Nobody produces a better 4'x4' bale.

The **Rollant 42** was designed for family livestock operations. This economical investment produces weather-tight 4'x4' bales for the highest nutrient content possible.

CLAAS bales mean nutrient-filled edible hay, low spoilage, and high crude protein retention

Each **Rollant** offers the innovative chamber, low-profile pick-up, and world class dependability. And they all share CLAAS's international reputation for low maintenance, durability and long-life

Call now to see how you can improve the round figures on your bottom line



### MEYERS IMPLEMENTS, INC.

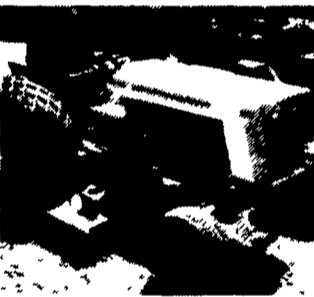
400 North Antrim Way  
Greencastle, PA 17225

Phone: (717) 597-2176 Fax: (717) 597-5349

VISIT CLAAS'S PENNSYLVANIA & MARYLAND  
FIELD DEMO AND HAY PRODUCTION SEMINAR

MAY 25, 1994 - 10 AM to 3:00 PM  
CHECK THIS WEEK'S LANCASTER FARMING FULL PAGE AD  
FOR DETAILS AND FREE REBATE COUPONS.

## We Have A LARGE SELECTION of Quality 4x4 Compact Diesels w/Loaders For Sale, Rent or Lease!



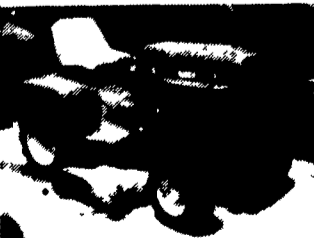
Cub Cadet 154 Cub  
Low Boy, Ex. Cond.



JD 1050 w/Loader  
4x4, 622 Hrs., Good Cond.



Kubota B5100 4x4  
48" Belly Mower, 430 Hrs.



JD 330 Diesel  
Ex. Cond., 664 Hrs.

For The Best Prices  
Call Now & Ask For  
Chet or Joel

Ford 1510 w/Loader  
Ford 1620 4x4 w/loader, 270 hrs.

Klotl 17 HP 4x4 - 3 Pth  
Klotl 22 hp w/Loader  
Yanmar 276 w/Loader 4x4, 500 hrs.

JD 305 Rear, 5 Gang Reel Mower  
JD 855 w/Loader  
JD 1050 4x4 w/Loader

New Pro 6 Harley Rock Rakes

Kubota B7200 HSE, 2WD, Low Hrs.  
Kubota L2650 4x4 w/Loader, 400 Hrs.

Kubota L295 w/Blade

Bobcat Ransome 60" 3 Wheel Mower  
Bush Hog GT42, 8 HP Pull Behind Mower

New 3 pt. Hitch Rear Blades 5', 6', 7' & 8' In Stock

•Financing And Leasing Available  
Factory Certified Service Available

SEVERAL TLC SPECIALS  
B6100 w/Blade, 14 HP, Diesel..... \$2,900  
B7100 4x4, 16 HP, Diesel..... \$3,900  
White Field Boss 4x4, 16 HP, Diesel..... \$4,975



Ford 340 Diesel  
w/Loader, 1500 Hrs.



Kubota L4150 4x4,  
50 HP, w/Loader, w/or  
w/o Backhoe



Kubota L345 TLB  
35 H.P., 1238 Hrs., Ex. Cond.



Kubota B8200 TLB  
4x4, 687 Hrs., Ex. Cond.



Full Service,  
Parts And Rental

### NICARRY EQUIPMENT, INC.

RD #2, Box 2008, Reading, Pa. 19605  
610-926-2441

Located: 4 Miles North of Reading On Rt. 61  
3 Miles South of Leesport

Reg. Hours: Mon. thru Fri. 8 to 5; Sat. 8 to 3