

IH Disc Harrow, Heavy Duty, Model 48, 14' Wide, Very Good Condition \$1800 (609)769-3183.

IH Farmall Super C, new tires and paint, motor rebuilt 2 years ago, excellent condition 610-857-5706.

In-line bale wrappers, for any size silage bales. Self powered, high speed, low maintenance For more information Glenn Beidler, (717)539-8993

Int. 4R cultivator w/100 gal. poly tank for nitrogen side dressing. \$ 800 717/742-2712.

Int. 1250 grinder mixer, very good condition. Call evenings, (814)472-5794.

Int. 185 Cub lowboy w/5' belly mower, 3pt hitch, excellent condition, \$3250. 610/932-2767.

Int. 464 gas, low hours, excellent condition, good rubber, w/2250 mount-o-matic loader, \$6500 OBO. 610/932-2767

KEYSTONE TARPS

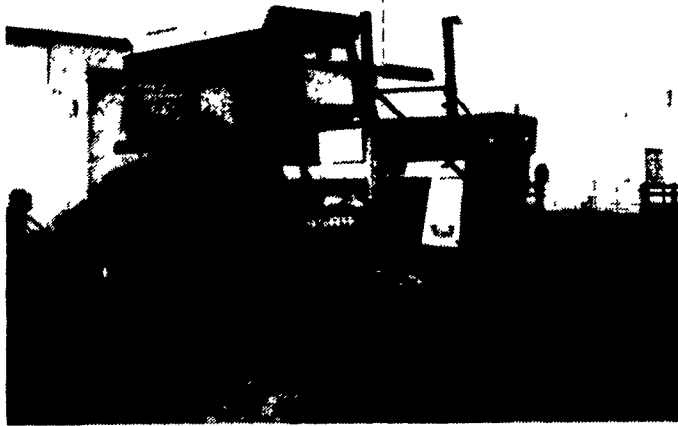
Is A. Manufacturer Of Custom Tarps

- Truck Tarps
- Cargo Straps
- Tarp Straps
- Gloves
- Custom Covers
- Used Railroad Ties
- Storage Covers
- Boat Covers



Service and Sales
R.D. #1, Box 329A Stugart
Cogan Station, PA 17728 (717) 435-0752

INVESTMENT TRACTORS FOR SALE



IH 1568 - With Duals - As We Received It - Nothing Special - Runs - It's Red - Not Green - Must Go!
REASONABLE \$5,900

56 FERG 35 New (0 Hours) Not Redone- Brand New!!!	\$24,500
75 IH 1568 Cab- w/Duals- Runs Fair- No Doors	\$ 5,900
54 IH S-H Last Year Super H In Restorable Condition	\$ 1,700
57 JD 320S 3 Pt-Clean Original- Above Average	\$ 6,900
57 JD 320U Clean 1 Owner- Fair Repaint- Easy Restore	\$ 6,500
59 JD 330S Runs Good- Nicely Redone- Good Tag	\$10,500
57 JD 420 Crawler Dozer- As Is- Needs Work	\$ 1,975
58 JD 530 S/N 45- Fenders- 3 Pt.- Loader- As Received	\$ 3,900
60 JD 530 3 Pt- Power Steering- New Frt Tires- Redone	\$ 4,900
56 JD 620LP Good Tin- Runs Good- Easy To Restore	\$ 2,900
57 JD 620S Standard- Nicely Redone- Well Above Average	\$ 5,900
56 JD 70S Standard- Diesel- Good Tin- Good Rubber	\$ 3,200
58 JD 720 Pony- WF- 3 Pt- Runs OK- Nicely Redone	\$ 5,100
59 JD 730 Fenders- 3 Pt- DE- Needs Engine Work	\$ 3,500
59 JD 730S Pony- Standard- Nicely Redone	\$ 5,900
55 JD 80 Off Farm Condition- Fair Tires- Good Tin	\$ 4,600
56 JD 80 As Received	\$ 5,500
58 JD 820 Runs- No Pony- Poor Tires- Fair To Gd Tin	\$ 2,900
60 JD 830 Cab- Pony- PTO- As Received	\$ 4,900
59 JD 830 Pony- Poor Tires- Good Tin- Runs	\$ 5,300
59 JD 830 De-Overhauled- 80% Tires- Good Tin- Redone	\$ 8,900
45? JD A Starter- Lights- Clean Tin- Runs Good	\$ 1,700
36 JD A Unstyled- Runs Good- Easy Restore- Good Tin	\$ 2,700
35 JD A Unstyled- Good Tires & Tin- Decent Paint	\$ 3,100
37 JD A Unstyled- Factory Steel- Runs Good	\$ 3,200
36 JD A Unstyled- Factory Round- Runs Good	\$ 3,500
51 JD AR Styled- Nicely Painted- New Rear Tires	\$ 4,900
50 JD AW WF- Fenders- Clean- \$2000 Engine Work Done	\$ 3,900
49 JD B Cyclone- Starter- Lights- Cult- As Received	\$ 1,200
41 JD B Decent Tin & Tires- Runs Good	\$ 1,800
43 JD B Styled- Runs Good- Looks Good	\$ 1,900
41 JD B Styled- Runs Good- Looks Good	\$ 2,300
38 JD B Unstyled- New Paint- Spokes- Runs Good	\$ 3,200
37 JD B Unstyled- New Rear Tires- Decent Paint	\$ 3,500
37 JD B Unstyled- Spokes- Nicely Redone- Gd Tin	\$ 4,200
50 JD D As Received	\$ 1,850
47 JD D As Received	\$ 1,850
47 JD D Styled- Loose - Not Running	\$ 2,500
49 JD D Styled- Runs- As Received	\$ 2,500
41 JD D Styled- Hand Start- Good Tin- Decent	\$ 2,700
49 JD D Styled- Runs- Nicely Redone	\$ 3,950
50 JD G Try- Decent Tin- Runs Good- Needs Paint	\$ 2,700
50 JD G As Received	\$ 2,900
51 JD G Runs- As Received	\$ 2,900
48 JD G Good Tin- Runs Good- New Tires- Nicely Redone	\$ 4,650
38 JD G Unstyled- Good Tires- Good Tin- Runs Good	\$ 5,200
41 JD G Unstyled- Last Full Year Of Prod.- Nice Unit	\$ 5,300
51 JD GW WF- As Received	\$ 4,600
45 JD H PTO- Hyd- Starter- Running Condition	\$ 2,300
40 JD L w/Pulley- Good Tin- Needs Restored	\$ 1,700
38 JD L Very Good Tin- Runs Good- Easy To Restore	\$ 2,450
JD L/LA Cultivator	\$ 395
43? JD LA Fair Tin- Good Tires- Runs Good	\$ 2,100
50 JD M Good Tires- Fair Tin- Runs Good- To Restore	\$ 1,400
JD MC Crawler Dozer- Runs- To Restore	\$ 2,200
49 JD MT Fenders- Weights- Fair Tin- To Restore- Runs	\$ 1,600
50 JD MT Widefront- Runs- To Restore	\$ 1,800
52 JD MT w/Mower- Fenders- Decent Tin- Runs Good	\$ 2,350
53 JD R Runs- Needs Restored	\$ 2,800
51 JD R Overhauled- Good Tin- Repainted- Good Cond	\$ 4,900
63 MF 97 4x4- Cab- Runs- Good Tires- Good Tin	\$ 4,900
60 MF 98 GM Diesel- Runs Good- Nicely Redone	\$ 5,900
53 OL 66 Widefront- Fenders- Nice Tin- 2 Remotes	\$ 1,800
57 OL 880 Diesel- Standard- New Tires- Very Nice	\$ 4,900
60 OL 990 GM Dsl- Poor Tires- Good Tin- Runs Good	\$ 4,900

I Will Buy Clean Or Odd John Deere's. Buy-Sell-Trade.
Lots Of Older Sales Literature, Toys And Pedal Tractors For Sale.
Lots Of Owners Manuals/Parts Book — Call.

LLOYD WENGER

251 S. Race St., Myerstown, Pa. 17067
717-866-2130 Days 717-866-7147 Evenings

Best Buys in Used Equipment

USED FARM TRACTORS

Magnum 7110, 2WD, 1100 Hours
Ford 9N, 8N
Ford 1510, 22 H.P., 2WD, Low Hours
Ford 1910, 28 H.P., 2WD, w/Loader

MANURE SPREADERS

NI 3626 Box Spreader, 260 Bu. \$ 3,495
MF 110, Small PTO Spreader \$ 1,795
Gehl 329 Scavenger, 2900 Gal. \$ 6,900

HAY & FORAGE

Forage Carts, 2 Wheel \$ 975
Gehl CB800 Forage Harvester w/7' Hay Pickup \$ 4,495
Vicon 240 Disc Mower, 7' \$ 2,895
NH 315 baler w/thrower \$ 4,495
NH 273 Baler w/thrower \$ 1,995
New Holland 1495 self-propelled, gas \$ 4,500
IH 100 Sickle Bar Mower, 3 Pt., 7' \$ 495
JD 1327 Discbine \$ 4,900
Hesston 1014 Haybine \$ 795
Gehl TR680, 2RW row crop \$ 395
New Idea 456 round baler, 5x6 \$ 2,200
Gehl 810 Forage Box \$ 1,295

MISCELLANEOUS

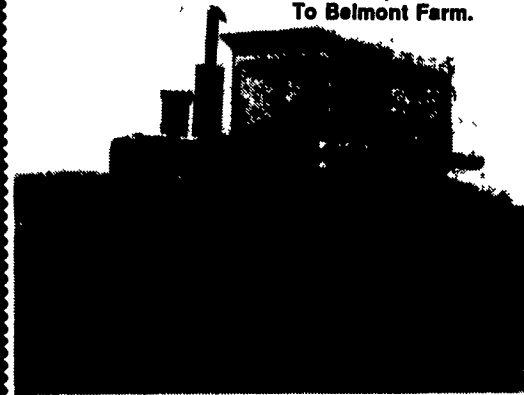
IH 550 Plow, 5 Btm. \$ 895
IH 510 Drill, 21x7 DD, Press Wheels \$ 3,500
JD 215 Disk, 14', Very Good \$ 2,695
JD 8350 Drill, 18x7 w/Fertilizer \$ 2,800
IH 800 corn planter, 4RN, Liquid Fert. \$ 1,995
GMC, V6, diesel engine, overhauled \$ 2,000

A.L. HERR & BRO.

Park Ave., Quarryville, PA 17566
(717) 786-3521
We Ship Parts U.P.S.



Take Exit 20B
Off Of 83, 5 1/2 MI. West
To Belmont Farm.



Farmall 1256

115 H.P. w/Hub Duals, T/A
2 Outlets, Heat, Clean
Midwest Tractor
\$6,500
410-833-9091

MISC. USED EQUIPMENT & TRACTORS USED TRACTORS

IH F460
IH F706D
IH 484, 2WD
Cub Cadet 2072 w/60" Deck
Cub 154 Low Boy
IH 1862 w/46" Deck

USED EQUIPMENT

IH 56 Blower
JD 1219 Mower Conditioner
IH 1190 9' Mower Conditioner
IH 800 6R planter
Kuhn 200 Mower Conditioner
NI 353 Spreader
NI 484 Round Baler
NI 555 Baler w/kicker
IH 440 Baler w/Thrower
IH 510 Drill 18x7
Woods HD 315 Mower
EZ Trail 1074 Running Gear

BIGGS INCORPORATED

190 Biggs Hwy.
Rising Sun, MD
410-658-5531



(717) 428-1517 or 717/741-1797

Fax No: (717) 428-2990

RR 2 Box 314A, Kreidler Rd.
York, PA 17403
(Exit 3 Off Interstate 83)

Douglas

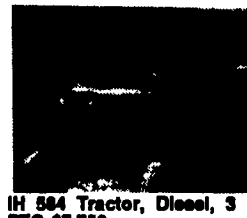
EQUIPMENT & SUPPLY CO.

Many Pieces Not Listed!
If You Don't See It -
Give Us A Call!

Authorized Dealer For York Rakes & Power Brooms



240 Tennant Sweeper LP, New Brooms, Very Good Cond. \$4,500
Elgin Pelican JD Turbo Diesel Hydrastatic, High Dump \$4,500



IH 584 Tractor, Diesel, 3 Pt. PTO \$7,750
1989 Shennliu 25 HP Diesel, 2 Spd, PTO, 3 Pt.



1988 Toyota SDK 8 Skid Steer Loader, Diesel, Rebuilt Hydrastat, New Rubber, 2100 Hrs. \$8,850

Custom Trailers 3-20 Tons In Stock
1984 9 DOW 3 axle, Tag-A-Long Trailer, Good Cond.

Coming In...
Athey 7-12D belt loader, JD diesel, hydrostatic, stock pile front end
Ford A64, 4WD loader, EROPS



(2) 580 SE Cab Extenshoe (1) 1985 (1) 1984
(1) JD 510 w/Cab, Rebuilt Engine & Clutch, New Tires



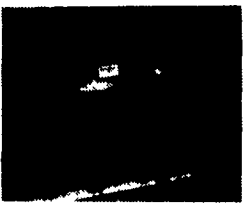
Gallion Mod. 90 Crane 4x4, Int. Diesel, Cab



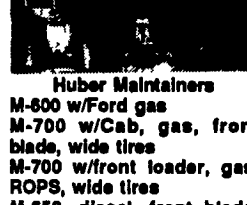
HD 68 Allis Chalmers 10' Angle Dozer, Good UC, 1 Owner From New, Nice Tractor



1993 IR 175 Compressor, Deutz Diesel, 150 Hrs., Like New



York 3 Pt. PTO Power Brooms In Stock



Huber Maintainers
M-600 w/Ford gas
M-700 w/Cab, gas, front blade, wide tires
M-700 w/front loader, gas, ROPS, wide tires
M-850, diesel, front blade, wide tires
M52 w/cab, \$3,750
Many maintainers for parts



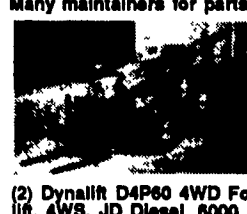
WC Allis Chalmers With Flail Mower "Oldie But Goodie"



Davey 150 CFM Compressor, Ford Diesel, 1600 Hrs., Hose Reels...\$3,900
IR ECM 250 Track Drill



Ford 3400 Trencher, Diesel, Backfill Blade



(2) Dynalift D4P60 4WD Forklift, 4WS, JD Diesel, 6000 Lb. Cap, 34 Ft., Good Cond.
Dynalift 544, Detroit Del., 4WD, 6,000 Lb., C&P



Case 580C, OROPS, Footswing, Good Cond.
Case 580B, EROPS, Footswing, Diesel



Ford 2110 Tractor, Side Sickle, Gas, 3 Pt., PTO, 8 Spd., Low Pro.