

Philadelphia Fruit Market

Philadelphia, Pa.

Wednesday, May 18, 1994

CITRUS FRUITS ---GRAPEFRUIT: MARKET ABOUT STEADY 4/5 buctns FL Indian River Red 23s 8.50 27s 7.50-8.50 fair qual 7.00 32s few 8.50 fair qual 7.00 36s few 8.50 40s 7.50-8.50 fr qual 7.00-8.00 48s 8.50-9.00 fr qual 7.00 ---**LEMONS:** MARKET ABOUT STEADY ctns CA 95s 16.00 few 20.00 fair qual 13.00 115s 17.00-19.00 few 20.00 fair qual 12.00-13.00 few 11.00 few 14.00 140s 18.50-20.00 few hgr fair qual 15.50 few 16.00 fair cond 8.00-10.00 165s 19.50-20.00 few hgr fair qual 17.50 few 18.00 200s 20.00 few hgr fair qual 17.50 few 18.00 ---**LIMES:** MARKET STEADY 10lb ctns MX Seedless Type 48s 3.50-4.00 54s 3.50-4.00 63s 3.50-4.00 ---**MISC CITRUS:** OFFERINGS INSUFFICIENT TO QUOTE ---**ORANGES:** MARKET STEADY ctns CA Navel 48s fair qual few 10.00-11.00 56s 14.50-15.00 fair qual 11.00 few 10.00 72s 15.00 fair qual 11.00 few 10.00 88s 14.00 fair qual 11.00 few 10.00 113s fair qual 10.00-10.50 138s fair qual 9.00-9.50 Valencia 56s 15.00 72s 14.50-15.00 fair qual 8.00-11.00 88s 14.50-15.00 fair qual 8.00-11.00 113s 12.00 138s 11.00-11.50 fair qual 9.50 4/5 buctns FL Valencia 64s 9.00 fair qual & cond 5.50-6.00 80s 9.00-10.00 100s 9.00-10.00 mostly 9.00-9.50 125s

8.00-9.50 mostly 9.00-9.50 ---**TANGELOS:** OFFERINGS LIGHT 1/2 buctns CA Minneola 90s 10.00-12.00 120s 9.00 ---**TANGERINES:** OFFERINGS LIGHT 4/5 buctns/crns FL Honey 150s 20.00 ---**TEMPLES:** OFFERINGS INSUFFICIENT TO QUOTE. **BERRIES ---BLUEBERRIES:** MARKET LOWER fits 12 1-pt flmwrpd cups NC med-lge 24.00 fits 12 1-pt cups with lids NC med-lge 28.00 fits 12 6-oz cups with lids FL med-lge few 21.00 ---**CRANBERRIES:** OFFERINGS NONE ---**MISC BERRIES:** OFFERINGS LIGHT fits 12 150gm ctns GU Blackberries 15.00 ---**RASPBERRIES:** fits 12 125gm cups CL AIR Red 20.00-24.00 ---**STRAWBERRIES:** MARKET ABOUT STEADY fits 12 1-pt bkts CA lge preferred labels 12.00-15.00 med-lge 8.00-10.00 ord-fair cond 2.00-5.00 med fair cond 4.00-6.00. **MELONS ---CANTALOUPS:** OFFERINGS LIGHT 1/2 ctns/crns MX 15s ord cond 3.00 23s one label 18.00 TX 6s 10.00 9s 12.00-13.00 ---**HONEYDEWS:** MARKET ABOUT STEADY 2/3 ctns CR 4s ord cond 3.00-5.00 5s fair appear 10.00 ord cond 3.00-5.00 6s fair appear 10.00 ord cond 3.00-5.00 8s fair appear 10.00 ord cond 3.00-5.00 MX 6s 10.00-11.00 8s fair qual 8.00-9.00 TX 5s ord cond 3.00-5.00 6s ord cond 3.00-5.00 8s ord cond 3.00-5.00 9s ord cond 3.00-5.00 ---**MISC MELONS:** OFFERINGS LIGHT 2/3 ctns CR Orange Flesh 6s ord cond 3.00 8s ord

cond 3.00 9s ord cond 3.00 MX Crenshaw 5s 15.00-17.00 ---**WATERMELONS:** MARKET ABOUT STEADY ctns per ctn TX Sangria 3s 18.00 4s 17.00 bulk per melon FL Sangria 12-14 lb 1.00-1.50 20-24 lb 3.25 fair cond 1.75 25-28 lb 3.50 28-30 lb 4.00 Crimson Sweet 20-24 lb 2.75 30-32 lb 4.00. **NON-CITRUS FRUITS ---APPLES:** MARKET ABOUT STEADY ctns trypk CL Granny Smith 100s 17.00 SF Granny Smith 100s 16.50 CONTROLLED ATMOSPHERE STORAGE ctns trypk ID IDEXFcy Red Delicious 72s 13.00-14.00 WA WAEXFcy Red Delicious 72s 14.50 80s 14.50 one label 18.50 88s 14.50 one label 18.50 100s 14.50 one label 16.50 113s 14.50 one label 16.50 Granny Smith 88s 18.00 100s 16.00 113s 15.00 U.S. EXFcy Golden Delicious 88s 24.00 100s 22.00 113s 19.00 125s ord-fair cond 8.00-12.00 WAFcy Red Delicious 56s 12.00 64s 12.00 few 13.00 72s 12.00 80s 12.00 88s 12.00 100s 11.00-12.00 113s 11.00-12.00 125s 11.00 few 12.00 138s 11.00 Golden Delicious 80s 18.00 100s 17.00 ctns celpk VT U.S. One McIntosh 80s 11.00 100s 11.00 120s 10.50 ---**APRICOTS:** 24 lb ctns CA Castlebrite #7 20.00-22.00 ---**AVOCADOS:** OFFERINGS LIGHT ctns 2 lyr CA Hass 48s 37.00 60s 36.00 ---**BANANAS:** 40 lb ctns IMPORT 12.50 fair qual 10.00-11.50 fair qual & appear 8.50 40 lb ctns bagged IMPORT 12.50 ctns institutional pk IMPORT 12.50 ---**CHERRIES:** 18 lb lugs

CA AIR U.S. One Larian 11 row sz & lgr 40.00 11 1/2 row sz 35.00 ---**FRUITS OTHER:** OFFERINGS INSUFFICIENT TO QUOTE ---**GRAPES:** MARKET LOWER 22 lb ctns CA Perlette 20.00-21.00 MX Perlette 18.00-20.00 mostly 18.00 small 16.00-18.00 Flame Seedless 27.00-30.00 mostly 28.00 few high as 32.00 18 lb lugs wrpd CL BOAT Thompson Seedless fair cond 13.00 poor-ord cond 3.00-6.00. UJ Red Seedless lge fair cond 16.00-17.00 Ribiers 13.00-14.00 Red Globe 14.00-15.00 small 12.00-13.00 ---**KIWIFRUIT:** MARKET STEADY fits 1 lyr CL BOAT 27s 7.00 33s 7.00 36s 7.00 few 7.50 10 kg ctns CL BOAT Hayward 36 sz 13.00 few 15.00 39 sz 13.00 few 15.00 ---**MANGOES:** MARKET ABOUT STEADY fits 1 lyr GU Tommy Atkins 8s 6.50-7.00 10s 6.50 12s 6.50 MX Haden 10s 6.00 fair cond low as 5.00 12s 6.00 fair cond low as 5.00 14s 6.00 fair cond low as 5.00 Kent 9s fair cond 3.00 Tommy Atkins 10s 6.00 fair cond low as 5.00 12s 6.00 fair cond 3.00-5.00 14s 6.00 fair cond low as 5.00 ---**NECTARINES:** MARKET ABOUT STEADY ctns 2 lyr trypk CA California Well Matured April Glo 72s 15.00 25 lb ctns lse CA California Well Matured Mayfire 72 sz 20.00 few 21.00 84 sz 15.00-17.00 occ 14.50 96 sz 12.00-14.00 few 11.50 108 sz few 12.00 1/2 buctns lse GA 1 7/8" min few 14.00 ---**PAPAYA:** MARKET ABOUT STEADY

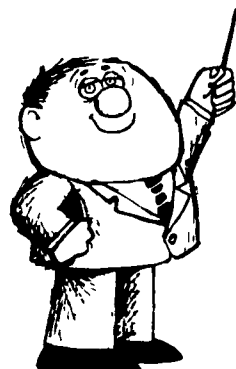
10 lb ctns HI AIR 12s fair cond 10.00 ---**PEACHES:** MARKET ABOUT STEADY ctns 1 lyr trypk AZ Florida Prince 30s ord cond 3.00 32s ord cond 3.00 ctns 2 lyr trypk CA California Well Matured rich may 64s 12.00-13.00 U.S. Mature rich may 50s 16.00 1/2 buctns GA No Grade Marks 2 1/4" up few 15.00 25 lb ctns lse CA California Well Matured Queen Crest 64 sz 14.00-16.00 few 17.00 occ 17.50 3/4 buctns GA No Grade Marks Empress 2 1/4" up fair cond 10.00-14.00 Sun Bright 2 1/8" up fair cond 10.00-12.00 SC No Grade Marks Florida King 2 1/4" up fair qual 16.00 ---**PEARS:** MARKET ABOUT STEADY 40 lb boxes CL BOAT Bartlett 100s 20.00 Packham Triumph 90s few 22.00 100s 19.00 Bosc 90s few 18.00 100s few 16.00 120s 11.00-12.00 CONTROLLED ATMOSPHERE STORAGE 4/5 buctns wrpd WA U.S. One D'Anjou 70s 18.00 80s 18.00 100s 15.00 120s 14.00 1/2 ctns wrpd WA U.S. One Red D'Anjou 55s 8.00 ---**PERSIMMONS:** OFFERINGS LIGHT ctns/lugs 1 lyr CL BOAT Fuyu 18s 14.00 20s 14.00 ---**PINEAPPLES:** ctns 1 lyr HI AIR 6s 11.50-12.00 ---**PLANTAINS:** 50 lb ctns CB 14.50-15.50 ---**PLUMS:** 28 lb ctns lse CA Red Beaut 3x4x4 sz 36.00-37.00 mostly 37.00 3x4x5 sz 28.00-30.00 5x5 sz 21.00 Rich Red 3x4x4 sz 36.00-37.00 mostly 37.00 3x4x5 sz 28.00-30.00 10 kg ctns CL Roysum 60 series few 21.00 70 series few 19.00 ---**POMEGRANATES:** OFFERINGS NONE ---**PRUNES:** OFFERINGS NONE.

TRI COUNTY



Confinement Systems, Inc.

SWINE CONFINEMENT EQUIPMENT and FACILITIES LEADER

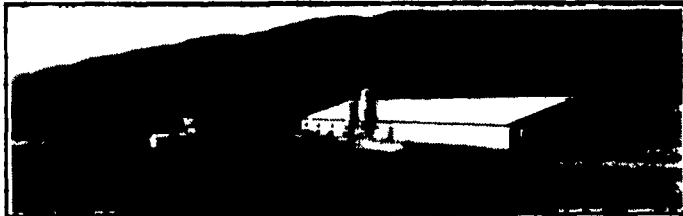


A LESSON WELL LEARNED... LANCASTER FARMING'S CLASSIFIED ADS GET RESULTS!



PIG SAVER "DUTCH CRATE"

Developed through testing in our research farms the goal was to develop a crate that nearly eliminates crushing, due to lay ons, unmatched durability and be easy to work around. All this has been achieved by a unique gravity fliprail that forces sows to lie down slowly and using stainless steel for rear doors and legs, proven horizontal and solid steel rod construction. All this at a reasonable cost. Crate also can be installed on an angle.

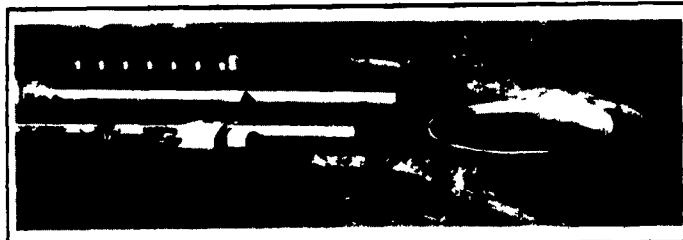


300 Sow Farrow - Feeder Pig Unit



CONFINEMENT STALLS

Developed in our R&D farm. Our goals were convenience, safety and durability. The low back and flat top rails are easy to reach over with no sharp edges. Stainless steel rear legs and front feet along with solid steel horizontal rods through punched uprights provide the strongest, most durable stall ever produced by Tri-County (21"-24" O.C. x86")



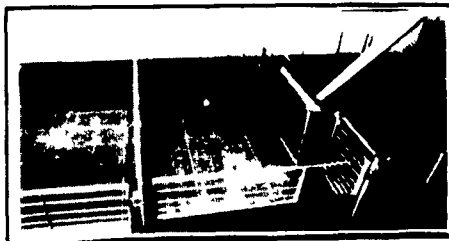
1200 Sow Farrow-Feeder Pig Unit



2800 HP Offsite Nursery (7 Rooms) (Pull Plug, Preferred Ceiling Ventilated)

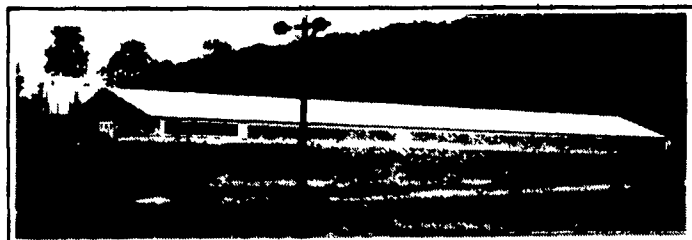
NURSERY PENNING

Nursery penning has been improved by the use of an optional solid stainless steel panel on the front gates which keeps walkways clean. Stainless steel feet on penning eliminate corrosion where penning attaches to the floor. Stainless steel drinker pipes & mounting brackets also increase durability.



FINISHING PENNING

Standard stainless steel feet and fasteners offer improved durability over other similar types of penning. Loop and flapper latch arrangement eliminates the use of drop pins. Stainless steel fence line feeders provide excellent durability and a minimum of waste.



2000 Head Finisher (2 Rooms) (Deep Pit, Tunnel Ventilated)

Let Our Experienced Staff Assist In Planning A Successful Facility For You

TRI-COUNTY

CONFINEMENT SYSTEMS INC.

608 E. Evergreen Rd., Lebanon, PA 17042

Ph. 717-274-3488

HOURS:
Mon.-Fri.
7:00 to 4:30;
Sat.
8:00 to 12:00



Natchez Animal Supply
Low Prices
Eqvalan Horse Wormer (ivermectin paste 1.87%)
\$9.19 per Tube
• VACCINE • ANTIBIOTICS
• WORMERS • VITAMINS
• INSECTICIDES
PRODUCTS FOR CATTLE...DOG...CAT...HORSE...SWINE
★ Request ★
New Catalog
P O Box 1528V • Natchez MS 39121
1-800-647-6760
2nd Day and next day air available

Authorized Parts & Service

Kubota

Industrial Diesel Engines
Check Our Prices on New and Used Parts

YANMAR
Diesel Engines

Mitsubishi - Satoh Compact Diesel Tractors

Specializing In Complete Service For Skid Loaders and Most Types Of Small Diesel Powered Equipment.

Dismantling For Parts NH L553 Skid Loader Yanmar 155 Tractor

GD Equipment

385 W Metzler Rd Ephrata, PA 17522

717-859-3533

