

# Huntingdon Equipment

Rentals Available **GOOD USED EQUIPMENT**

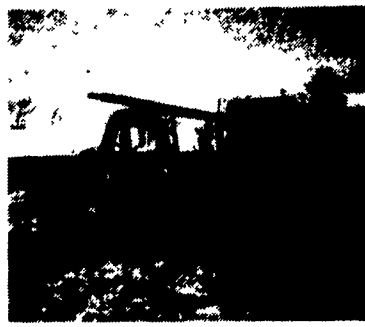
Huntingdon Valley, PA • 215-672-9667 • 1-800-543-3833 • Eddle



One Of Two 1987 Ford F-350, 460 Eng, 4 Spd., Great For Pulling Trailers



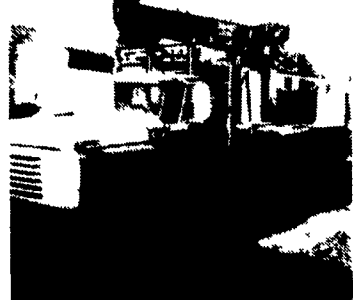
1970 Ford 800 V8 5 Speed with Aux. Trans, 39,000 GVW, VAC Brakes 13'4" Fran Fleet Maintained, 73,000 Miles.



International Presser Digger This Unit Is Ready To Work, Priced For Quick Sale \$9,500 \$8,500



Holan 70' Double Bucket 75' working height mounted on 1981 Western Standard, 6x6 Flatbed, CAT 3208, Auto.



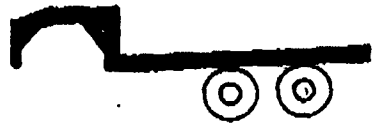
Need a Lift? We Have A Large Selection Of Boom Trucks Up To 14,000 lbs. Cap Some With Post Diggers.



Bucket Trucks 28' to 65' Gas and Diesel. Call For Details.

## DIGGER DERRICKS/AERIAL BUCKETS/UTILITY EQUIPMENT

### 9 Ton Gooseneck Flatbed Trailer



20' Flat with 5' Beavertail  
Flip-Up Beavertail with Ramps  
2 Axle Dual Wheels  
Outside Pockets with Rub Rail  
Great Hay & Machinery Hauler  
**\$5,995**



**Hostetler Truck Bodies & Trailers**  
Rt. 322, Milroy, PA 17063  
(717) 667-3921

### WILLIAM H. WESSELS USED CARS

511 Route 15 Dillsburg, PA  
1-800-440-4433 1-717-432-2918  
Notary Public Temporary Tags



'85 FORD F250 Diesel, 4 Speed, AC, PS, 81,000 Org. Miles, Very Fine **\$6,900**



'86 CHEVY C-60 FLATBED 18' Body, 19,200 G.V.W. 350, 4-Speed, 49,000 Miles **\$8,700**



'88 CHEVY C250 Ext. Cab, Work Truck, Auto, PS, White, 95,307 Miles **\$6,900**



'81 CHEV C-30 Roll Back w/Jerri-Dan Steel Bed, Big Block Gas, Auto, PS **\$9,900**



'90 FORD F350 Ext. Cab, Duals, 460 E.F.I., 5 Speed, AC, PS, 107,890 Miles **\$10,900**



'91 DODGE 15 PASSENGER VAN Auto, AC, As Trade **\$7,900**



'85 FORD F250 w/Easy Dumper Insert, 302 E.F.I., Manual, Ready to Work! **\$4,900**



'90 FORD F150 4x4, Extra Cab, 302 E.F.I., Auto, PS, PB, 95,604 Miles **\$12,900**



'86 CHEVY ALUMIUM 14' WALK IN VAN V-8, Auto, PS, Nice **\$7,900**



'89 FORD F250 Extra Cab, 351, V-8, 5 Speed, AC, PS, One Owner, 92,612 Miles **\$9,900**



'84 FORD BUCKET +/- 35' Reach, Service, Nice **\$7,900**



'81 GMC 16' ALUMIUM WALK IN VAN V-8, Auto **\$5,900**

**SUNDAY SHOPPER WELCOME NO SALES**

ALL VEHICLES PRICED & UNLOCKED FOR YOUR CONVENIENCE

### WILLIAM H. WESSELS USED CARS

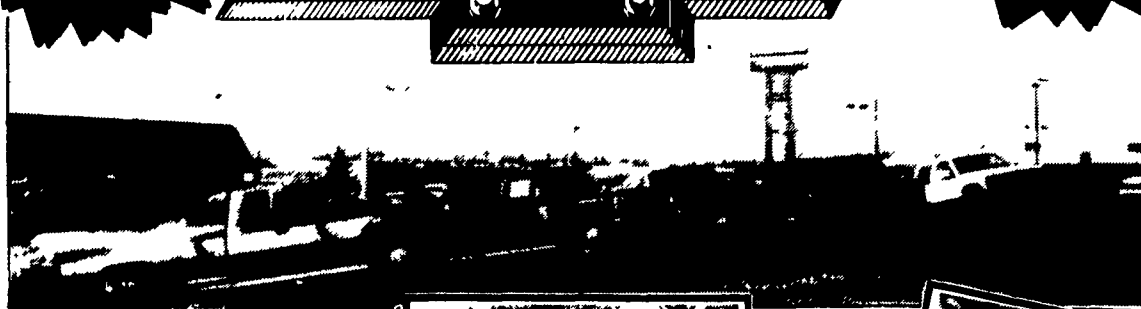
511 Route 15 Dillsburg, PA  
1-800-440-4433 1-717-432-2918  
Notary Public Temporary Tags

**CENTRAL PA'S LARGEST GM DEALER!**

*Frederick*

**THE TRUCK PLACE**

**OVER 200 NEW AND USED TRUCKS IN STOCK!**



'94 Chev. K1500 Extend Cab w/Flow

**JUST ARRIVED**  
(2) '94 Z71 K1500 4x4, Extend Cabs



'91 GMC 3500 FLATBED V8, 4 Spd.

**JUST ARRIVED**  
(3) '94 4x4 Work Trucks 2 WD Work Trucks **IN STOCK**



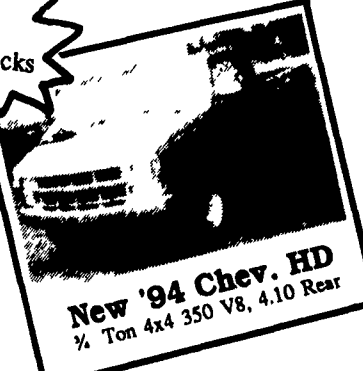
'88 Chev. K3500 4x4 Dump



**USED 1988 to 1993 CONVERSION VANS**  
High Tops & Low Tops



'94 GMC K1500 Z-71 4x4, Extend. Cab, Silverado, Loaded, Tow-Pkg., Maroon & White



**New '94 Chev. HD**  
1/2 Ton 4x4 350 V8, 4.10 Rear

**IF WE DON'T HAVE IT, WE'LL GET IT!**

*Frederick*  
The SUPERMARKET OF TRUCKS

Truck Office - 717-270-2656

(717) 274-1461 • PA (800) 222-5523

Truck Specialists

1505 Quentin Rd.  
Rt. 72 - Lebanon  
SALES HOURS:  
Mon.-Fri. 9-9  
Sat. 9-5

• Barb Keefer • Bill Breault • Bryon Bernhard • Morty Mortensen • Jack Bream