

USED TRUCKS



92 Chevrolet 2500 Scottsdale, 350 F.I., AT, AC, AM-FM, 8600 GVW, 24,000 Miles, Maroon
\$14,900.00



94 Chev. Ext. Cab, Dually, Silverado 6.5 Turbo Diesel, 5 Spd., PS, PB, AC, Cruise, Tilt, PW, PDL, Bucket Seats, Console, AM & FM Stereo Cass., 600 Miles.
\$29,600.00

Financing Available

MARTIN'S AUTO SALES

1025 W. Main St., New Holland, PA 17557
(717) 656-6621

LOUVERED TAILGATE



- Fast-Easy Installation
- Improves Vision
- Rugged Construction
- Increases Mileage
- Enhances Appearance

GAS MILEAGE INCREASED 15%

Not All Sizes In Stock - Call Ahead For Details



83 East Main St., Mt. Joy, PA
717-653-8057

Hours: Monday-Friday 9 AM to 6 PM;
Sat. 9 AM - 3 PM

REEFER TRUCK



1983 GMC SIERRA
3500 Diesel Reefer Truck, 6.2L Diesel Engine, 4 Spd., 14 Ft. Box, Liftgate, PS, PB, 158,000 Mi.
\$5,895

PINE TREE MOTORS

Rt. 322 & Clearview Road, Clay Lancaster Co., PA
717-738-2242

Attention Contractors!!



We Have Your Next **TRUCK CAP**



Deluxe Commercial Units (DCUs), from A.R.E. are built to fit your truck - no matter what the make or size. They're good looking, custom-made to match your needs, yet durable for rugged use.

We Also Carry A Full Line Of **READING SPACE CAPS & READY CAPS**

SKIPPYS TRUCK CAPS

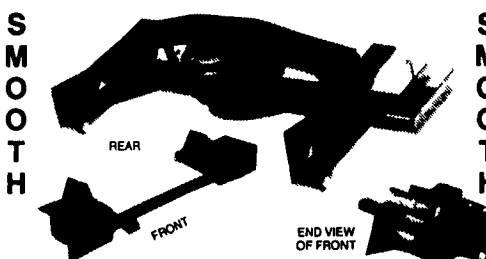
WE CARRY A FULL LINE OF TRUCK ACCESSORIES
Bed Mats, Bedliners, Running Boards and Truck Caps
Rt. 222 - Just South of Lancaster on the Willow Street Pike
Mon.-Fri., 8-6, Sat. 8-3



1-800-360-4390



KELDERMAN AIR RIDE



Adding a Kelderman Air Ride Conversion system to your present suspension will result in a two stage suspension system. This is not to be confused with adding an Air bag mounted above the axle. Allows adding extra spring leafs to increase load rating and still maintain Air-Ride comfort.

The bolt on basic package utilizes an air stem mounted in a convenient location to add or remove air from the system.

Optional 12 volt compressor allows changing air pressure setting on the go.

Currently available for front and rear suspension in Dodge Series 250 & 350 trucks. Available soon for Dodge Dakota models.

Also available for some Ford, Chevy, and GMC truck models. Special orders available for most motor homes. This option will smooth out the ride on those rough-road fishing/camping trips.

Ask For Dean At:

BINKLEY & HURST BROS. INC.

133 Rothsville Station Rd. • Lititz, PA 17543
717-626-4705

TRUCKS

- 89 F250 4x1 SUPER CAB XLT A/C 351 V-8 A/O
- 92 DODGE DAKOTA Sport V-6 A/C 5 Spd
- 89 F250 XLT 4x4 351 4-8. AT A/C 2-Tone
- 89 DODGE D250 Turbo Diesel AT A/C
- 89 GMC 1500 4X4 SLE A/C AT V-8
- 91 RANGER 4X4 SUPER CAB V-6 A/O A/C XLT
- 92 F150 4x4 Nite V-8 5 Spd A/C
- 92 RANGER XLT 4X2 V-6 A/O A/C
- 90 RANGER XLT A/C V-6 A/O 49,000 Miles
- 91 F150 4X4 XLT V-8 5 Spd A/C

PRE-OWNED CARS

- 91 CHEVY CAMARO RS V-8 5 Spd A/C
- 90 TEMPO ALL-WHEEL DRIVE 2.3L AT A/C
- 93 T-BIRD LX V-6 A/O A/C Only 11,000 Miles
- 91 T-BIRD SUPER COUPE A/O A/C Loaded, 1-Owner
- 93 TAURUS GL SW V-6 A/O A/C Power Equipment
- 89 PROBE LX A/C A/O Ready for Spring
- 92 MAZDA MX-6 A/C 5 Spd 34,000 Miles
- 90 MUSTANG LX 2.3L A/C A/O 39,000 Miles
- 90 TAURUS GL SDN 3.0L V-6 A/O A/C
- 94 LINCOLN CONTINENTAL Fully Equipped Only 15,000 Miles

MPV's

- 92 EXPLORER 4 DR XLT 4.0L A/C A/O 21,000 Miles
- 91 EXPLORER XLT 4 Dr A/O A/C
- 91 BRONCO XLT A/C 351 V-8 A/O 12,000 Miles
- 91 EXPLORER 4 DR XLT A/C 5 Spd
- 92 JEEP WRANGLER 4 Cyl 5 Spd Soft Top
- 90 AEROSTAR EXTENDED Eddie Bauer Dual A/C & More
- 89 JEEP CHEROKEE 4 Dr AT A/C
- 93 DODGE GRAND CARAVAN SE A/C 10,000 Miles
- 93 PLYMOUTH GR VOYAGER V-8 A/C SE 17,000 Miles
- 92 WRANGLER 6 Cyl 5 Spd Soft Top

ENGLE-RISSINGER AUTO GROUP

Rt. 117 Just North of Halifax
Halifax, PA 17032
The Call's On Us 1-800-242-8075
1-717-896-3421

Unbleivable find! 1973 CJ5 Jeep stored in heated garage, 2040 actual miles, rag top, 4x4, V8, 3 speed. Must see, non anywhere like this one Brand new condition, \$7850 Delivery available 304-772-3741



USED EQUIPMENT

GOOSENECKS

1977 Featherlight 22'x8'

BODIES

- 28 Ft. Eby Aluminum Double Deck Livestock Body
- 21 Ft. Eby Body on International Chassis
- (2) 20' Eby Aluminum Cattle Bodies
- 16' Eby Aluminum Cattle Body
- 12' Eby Aluminum Cattle Body
- 1982 20 Ft. Hostetter Cattle Body on '82 GMC Truck

HORSE TRAILERS

- 1990 Eby 33'x8'x7'6" GN 6 Horse & Carriage
- 1988 Equi-Trans 16'x6'x7' 2 Horse G-Neck
- 1988 Phillips 14'x6'x7'6" GN 2 Horse
- 1979 Kingston 14'x6'x7' BH 2 Horse With Tack

M.H. Eby, Inc.

1194 Main Street (Route 23)
Blue Ball, PA 17506
(717) 354-4971 (800) 292-4752
FAX: (717) 355-2114

4435 State Route 29
West Jefferson, OH 43162
(614) 879-6901 (800) 752-0507
FAX: (614) 879-0904

Agriculture Moves on EBY Bodies

M.H. Eby custom-builds aluminum truck bodies for the agri-transportation market. Nobody offers more sizes and options in:

- **LIVESTOCK BODIES** - Lengths to 32', choice of heights and widths.
- **GRAIN BODIES** - Lengths to 24'; landscape and general purpose dumps to 12'.
- **FLATBED BODIES** - Lengths to 32', choice of 5 widths.

For greater payload capacity, Eby's aluminum design is equal in strength to steel and up to 40% lighter. Our corrosion-resistant components never need painting. That means minimum maintenance, improved appearance and higher resale value.

Eby products have superior standard features. And we offer custom options for virtually any application. Agriculture is your business- building bodies to haul it is ours.



M.H. EBY, INC.

1194 Main Street (Rt 23) • Blue Ball, PA 17506 • 800/292-4752 • 717/354-4971 • FAX 717/355-2114
4435 State Route 29 • West Jefferson, OH 43162 • 800/752-0507 • 614/879-6901 • FAX 614/879-6904

E-TOWN DODGE

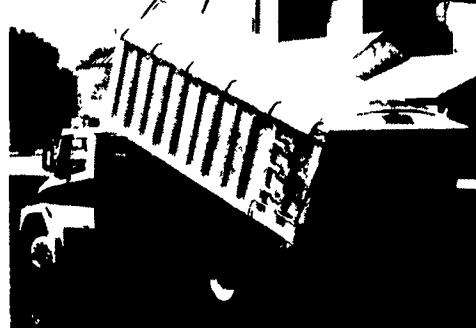
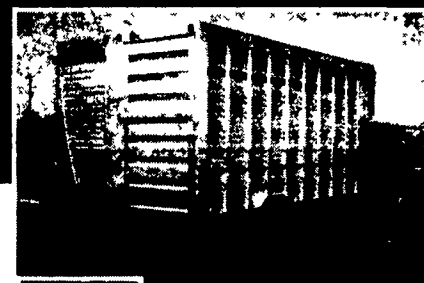
Brand New Utility box for dual wheel truck

1987 Dodge W100 4x4 Pickup

1992 Dodge 350 Cummins Diesel Pickup, Dual Wheel, 5 Speed, 2WD, Air, Tilt, 58K

(8) 1994 Dodge Full Size Pick Ups In Stock Also 4x4's

ASK FOR MILTON HESS
Certified Truck Specialist
717-367-6644
717-653-8667
Elizabethtown, PA



Let EBY custom build one for you.

